

725 S US Highway 1

725 S US Highway 1, Fort Pierce, FL 34950



Presented By:
Retail Sites International



725 S US Highway 1

725 S US Highway 1, Fort Pierce, FL 34950

Property Details

RSI is pleased to present to you 725 Old US Highway 1 Ft. Pierce, FL. 34950. This corner storefront works great for any type of business offers large parking lot, open layout with private bathroom, loading zone with roll up door and great visibility lots of parking and easy deliver for 18 wheelers. Freestanding former Family Dollar store located on the NWC of South US Hwy 1 & Georgia Ave in downtown Fort Pierce. This is a traffic lit intersection with 36,500 AADT at the intersection (34,500 AADT on US Hwy 1). The property is approximately 1 acre with 55 parking spaces on site. The building has 10,472 SF Net Useable Area and the interior is a clear span with no columns. Small back room area and two handicap accessible bathrooms. Located just south of the Fort Pierce bridge and causeway to Hutchinson Island and the North Causeway leading to Fort Pierce Inlet State Park and the South Beach/North Hutchinson Island area.

Price: \$16.00 /SF/YR

- corner, great visibility lots of traffic
- lots of parking easy 18wheeler delivery
- monument sign, high ceilings

View the full listing here: <https://www.loopnet.com/Listing/725-S-US-Highway-1-Fort-Pierce-FL/34370695/>

Rental Rate:	\$16.00 /SF/YR
Property Type:	Retail
Property Subtype:	Freestanding
Gross Leasable Area:	10,472 SF
Year Built:	1981
Walk Score ®:	65 (Somewhat Walkable)
Taxes:	\$0.13 USD/SF/MO
Operating Expenses:	\$0.00 USD/SF/MO
Rental Rate Mo:	\$1.33 /SF/MO

725 S US Highway 1

725 S US Highway 1, Fort Pierce, FL 34950

Listing space

1st Floor

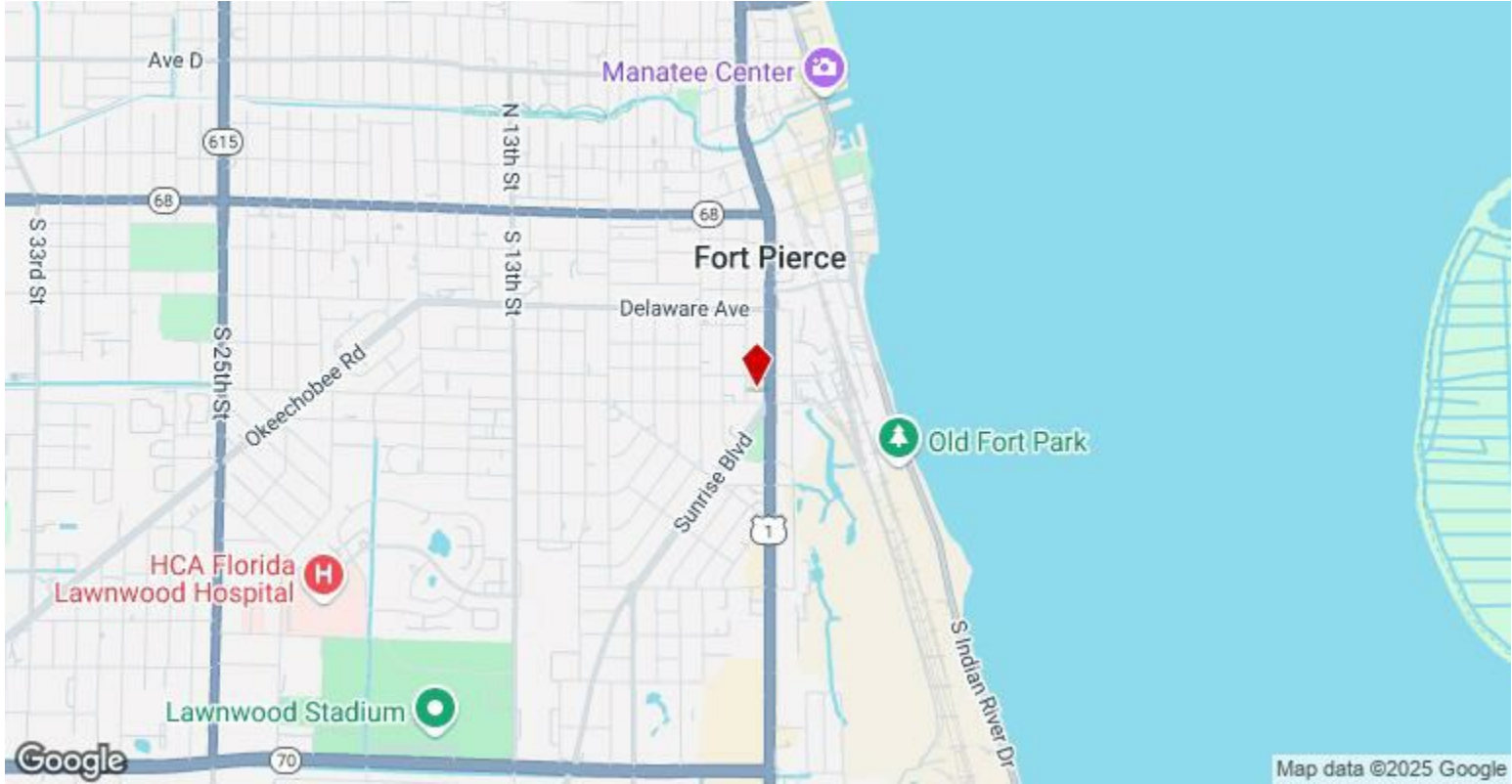
Space Available:	10,472 SF
Rental Rate:	\$16.00 /SF/YR
Date Available:	Now
Service Type:	Triple Net (NNN)
Built Out As:	Convenience Store
Space Type:	Relet
Space Use:	Office/Retail
Lease Term:	Negotiable

This is an open floor floor plan 1000 sf as storage, 2 ADA bathrooms and 1 office. Was a family dollar store , corner building, lots of parking , monument sign, delivery for an 18 wheeler, back large storage delivery door, high ceilings.Can be office, retail, storage

725 S US Highway 1

725 S US Highway 1, Fort Pierce, FL 34950

Location



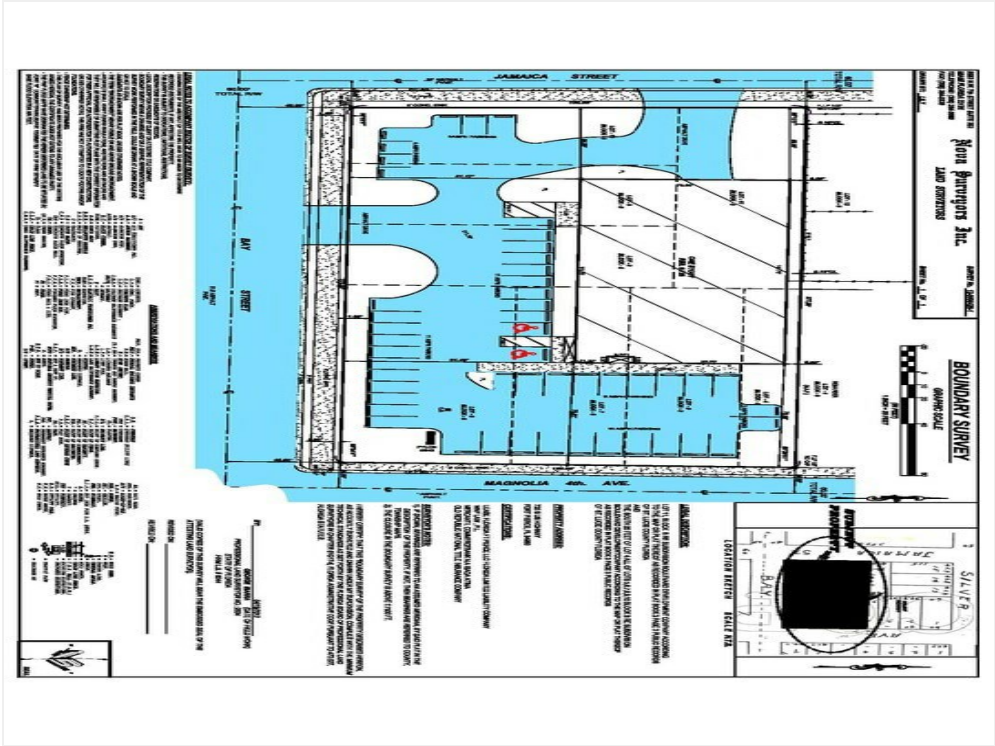
725 S US Highway 1

725 S US Highway 1, Fort Pierce, FL 34950

Property Photos



Primary Photo

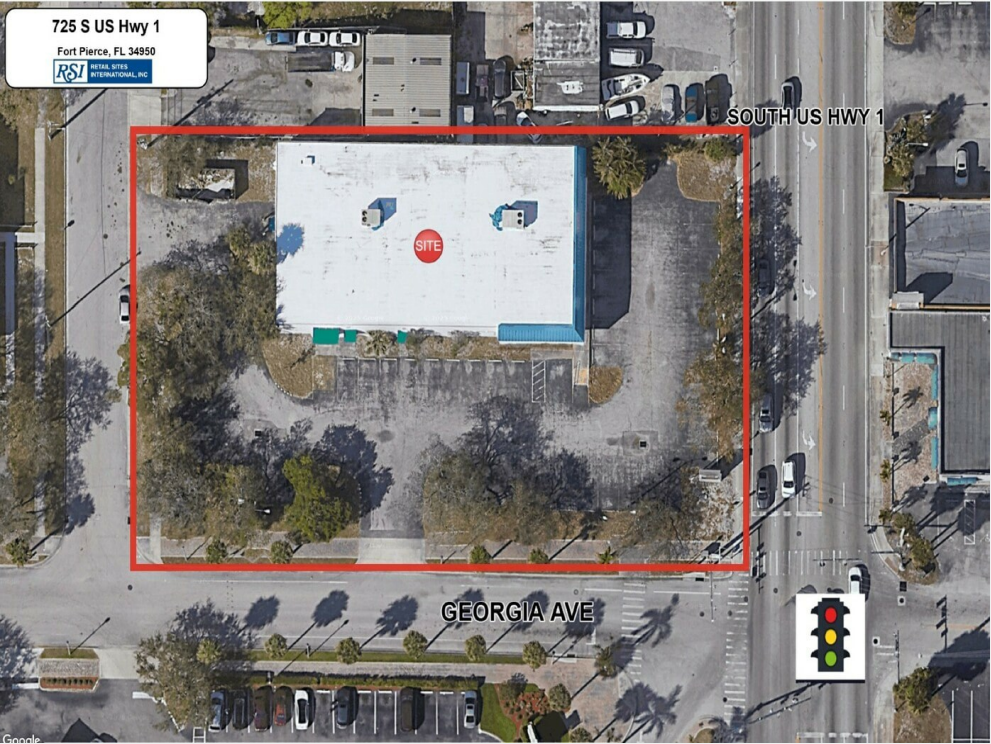


FDS ft pierce survey 2012

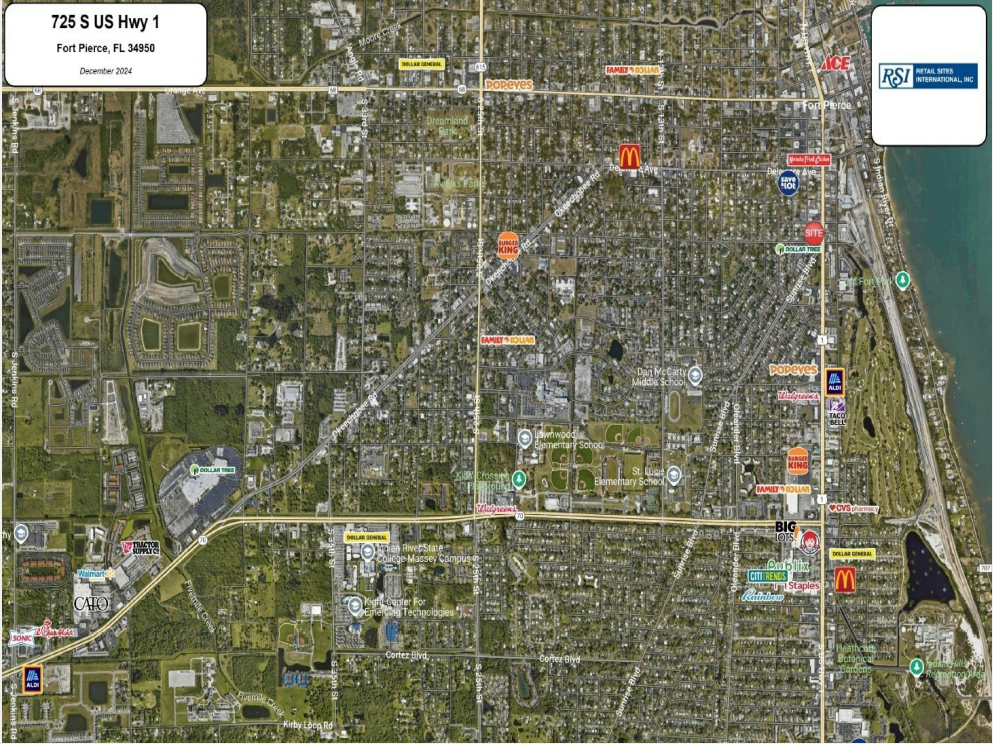
725 S US Highway 1

725 S US Highway 1, Fort Pierce, FL 34950

Property Photos



CLOSE-UP AERIAL



High Aerial

725 S US Highway 1

725 S US Highway 1, Fort Pierce, FL 34950

Property Photos



Low Aerial



Building Photo

725 S US Highway 1

725 S US Highway 1, Fort Pierce, FL 34950

Property Photos



Building Photo



Building Photo

725 S US Highway 1

725 S US Highway 1, Fort Pierce, FL 34950

Property Photos



Building Photo



Building Photo

725 S US Highway 1

725 S US Highway 1, Fort Pierce, FL 34950

Property Photos



Building Photo



Building Photo

725 S US Highway 1

725 S US Highway 1, Fort Pierce, FL 34950

Property Photos



Interior Photo



Interior Photo

725 S US Highway 1

725 S US Highway 1, Fort Pierce, FL 34950

Property Photos



Building Photo



Building Photo

725 S US Highway 1

725 S US Highway 1, Fort Pierce, FL 34950

Property Photos



Building Photo



Other

725 S US Highway 1

725 S US Highway 1, Fort Pierce, FL 34950

Property Photos



Building Photo



Building Photo

725 S US Highway 1

725 S US Highway 1, Fort Pierce, FL 34950

Property Photos



Building Photo



ft pierce interior storage room

725 S US Highway 1

725 S US Highway 1, Fort Pierce, FL 34950

Property Photos



ft pierce interior pictures



0825181657a_resized

725 S US Highway 1

725 S US Highway 1, Fort Pierce, FL 34950

Property Photos



0825181656d_resized



0825181655e_resized

725 S US Highway 1

725 S US Highway 1, Fort Pierce, FL 34950

Property Photos



ft pierce interior picture back



0825181657e_resized

725 S US Highway 1

725 S US Highway 1, Fort Pierce, FL 34950



Nathan Werner

nawerner1@aol.com

(954) 563-8400 Ext: 102

Retail Sites International

2037 Ocean Mist Dr

Pompano Beach, FL 33062

