

# 20 EAST 42ND

BRYANT PARK, MANHATTAN  
BETWEEN MADISON & FIFTH AVENUE

  
**CURRENT**

# 20 EAST 42ND

## SIZE

2nd Floor: 1,753 SF

## POSSESSION

March 2026

## ASKING PRICE

\$75 PSF

## HIGHLIGHTS

- Highly visible 2<sup>nd</sup> floor retail space on 42<sup>nd</sup> Street
- Currently built as a luxury cosmetic wellness office
- Space features a modern, turnkey buildout with reception/waiting area, private rooms, glass partitions and polished finishes throughout
- Excellent street visibility and signage potential
- Ideal opportunity for beauty, medical, wellness, med-spa, showroom or boutique retail user

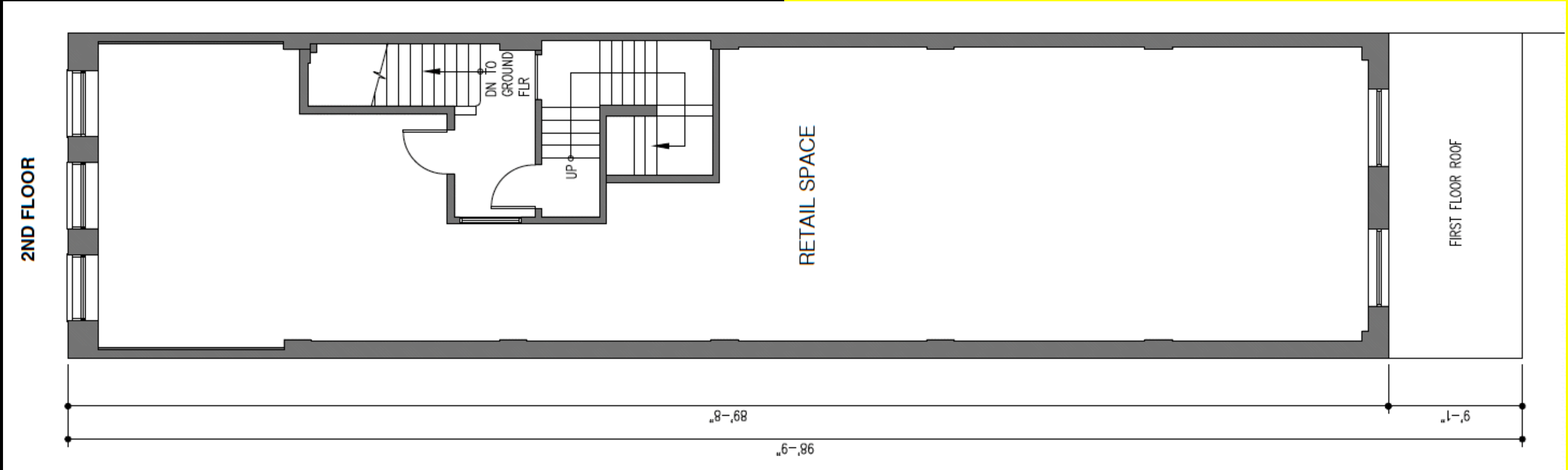


20 EAST 42ND



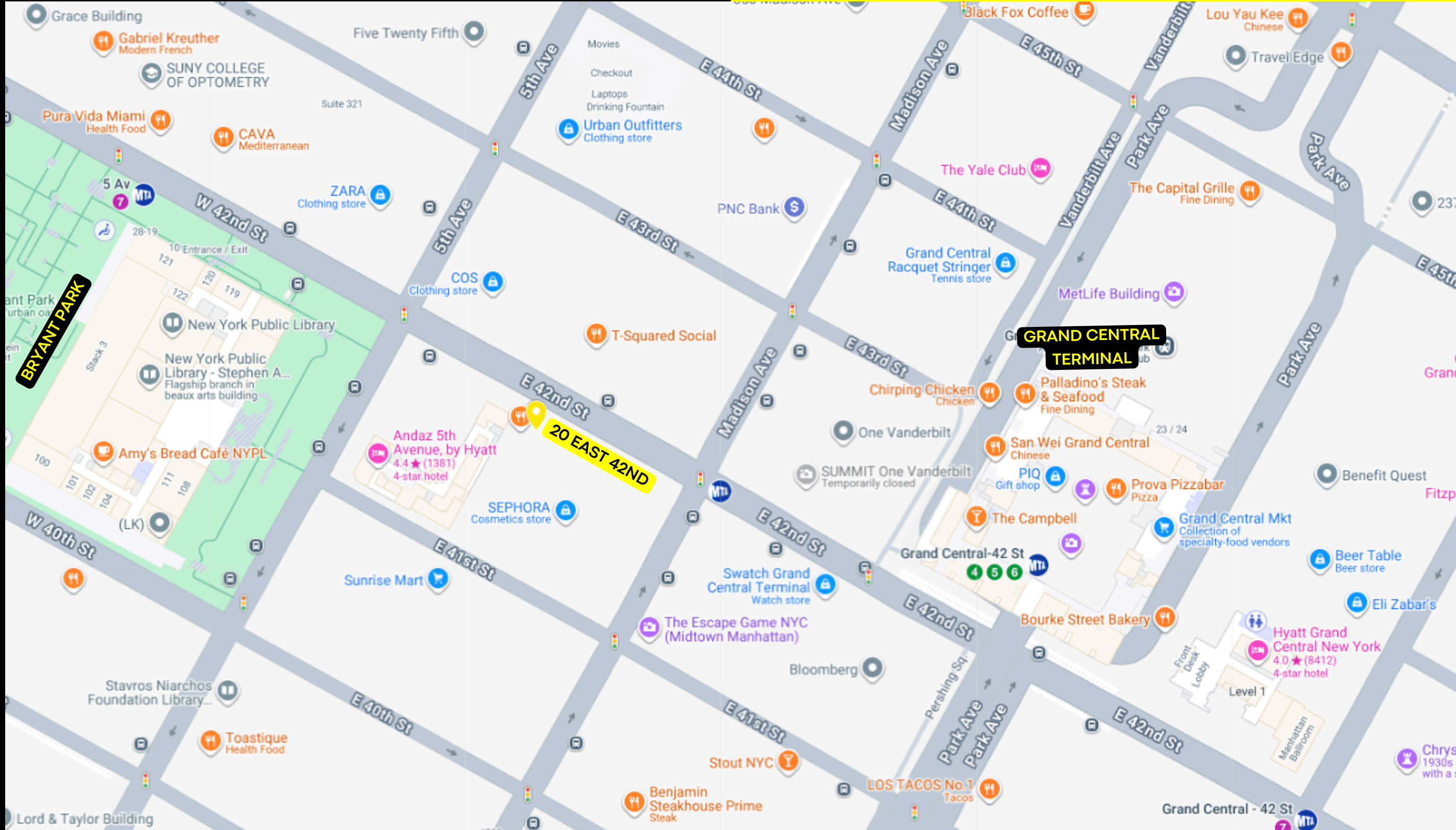
# 20 EAST 42ND

FLOOR PLAN



# 20 EAST 42ND

RETAIL MAP





# CONTACT

MICHAEL SEGERMAN

[msegerman@currentadvisors.com](mailto:msegerman@currentadvisors.com)

516.297.3337

**CURRENT**<sup>®</sup>  
Real Estate Advisors