

TERMINAL WAREHOUSE  
WEST CHELSEA  
NEW YORK



Columbia  
Property Trust



Cannon Hill  
Capital Partners



# THE TUNNEL

FLOORS 1-2  
22K SF

# THE PENTHOUSE

FLOORS 8-14  
270K RSF

# THE FOUNDRY

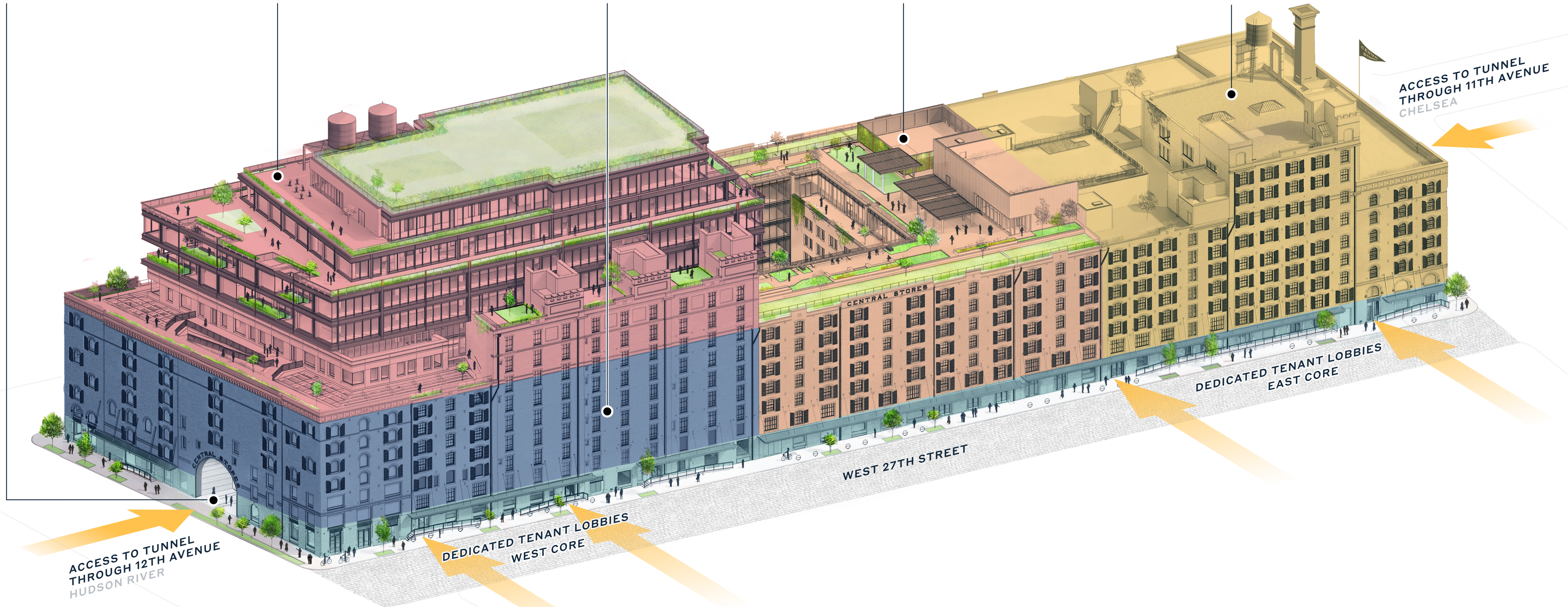
FLOORS 3-7  
316K RSF

# THE COURTYARD

FLOORS 3-7  
195K RSF

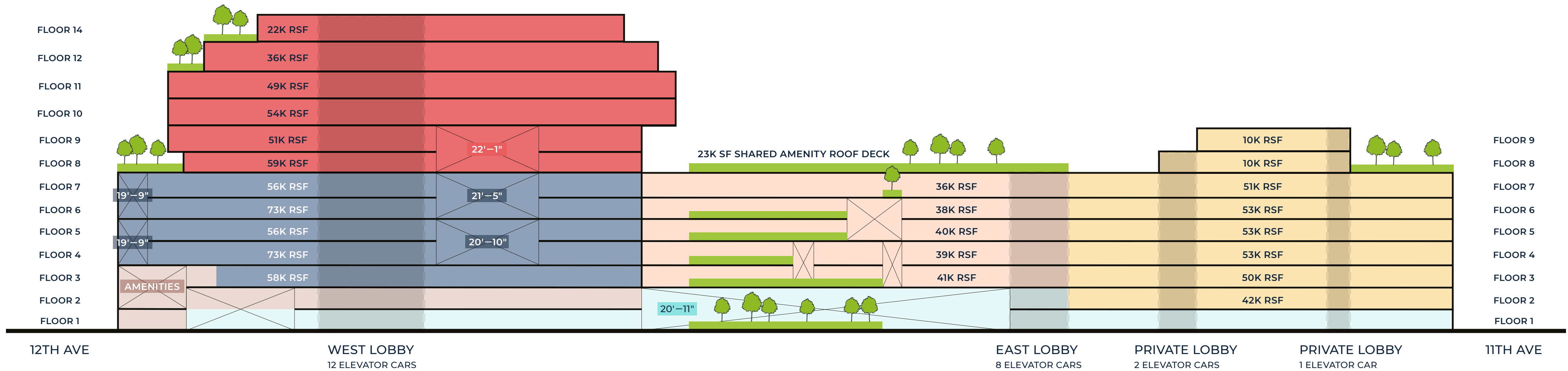
# THE TIMBERS

FLOORS 2-9  
322K RSF





# TERMINAL WAREHOUSE CAMPUS



## THE PENTHOUSE

- Floors 8-14
- 270K RSF Total
- 39K SF Private and Wrap-Around Terraces
- 23 Private Terraces

## THE TUNNEL

- Floors 1-2
- 54K USF of Retail with Potential Additional Space on 2nd Floor
- 700 Feet Long

## THE FOUNDRY

- Floors 3-7
- 316K RSF Total

## SHARED AMENITIES

- 45K RSF
- 4K SF of The Park At Terminal
- 23K SF Shared Roof Terrace

## THE COURTYARD

- Floors 3-7
- 195K RSF Total
- 7K SF Private Outdoor Terraces

## LOADING DOCKS

- 5 Loading Docks on 28th Street

## THE TIMBERS

- Floors 2-9
- 322K RSF Total
- 11,100 SF Private Outdoor Terraces

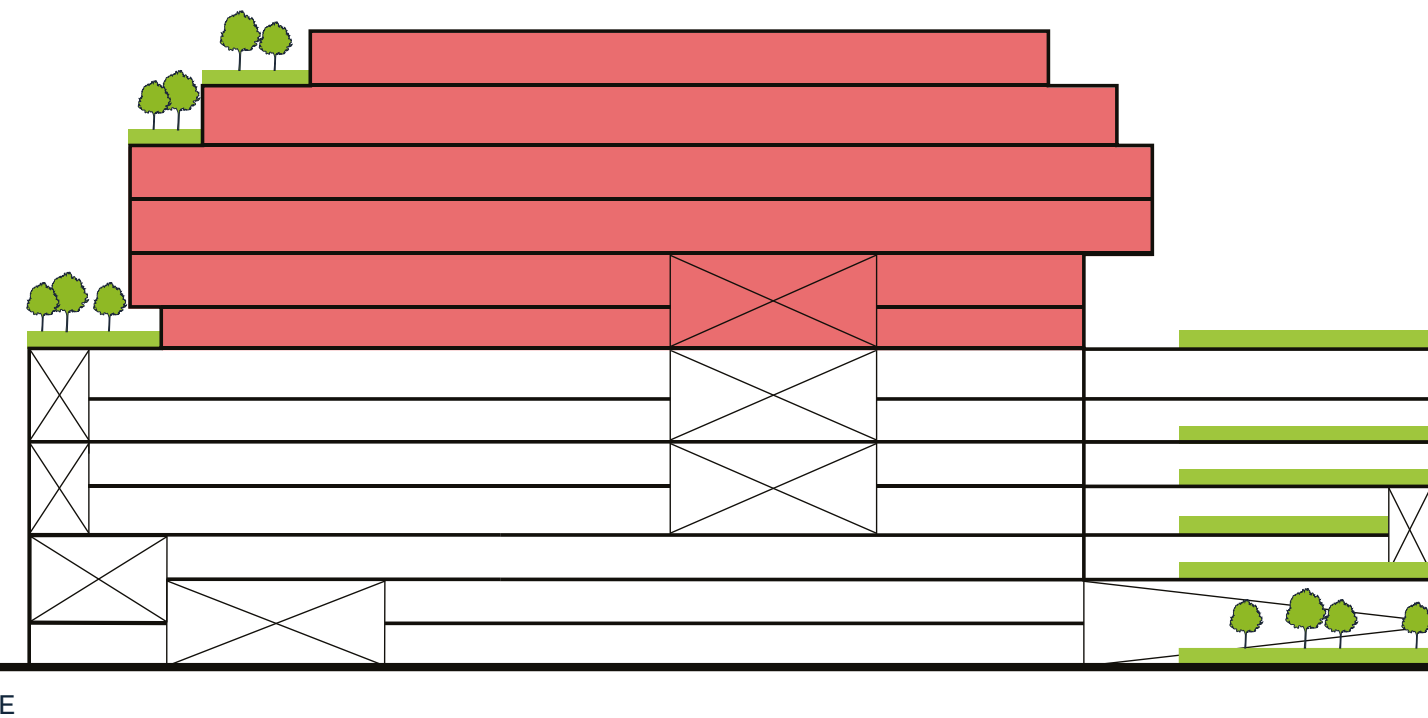
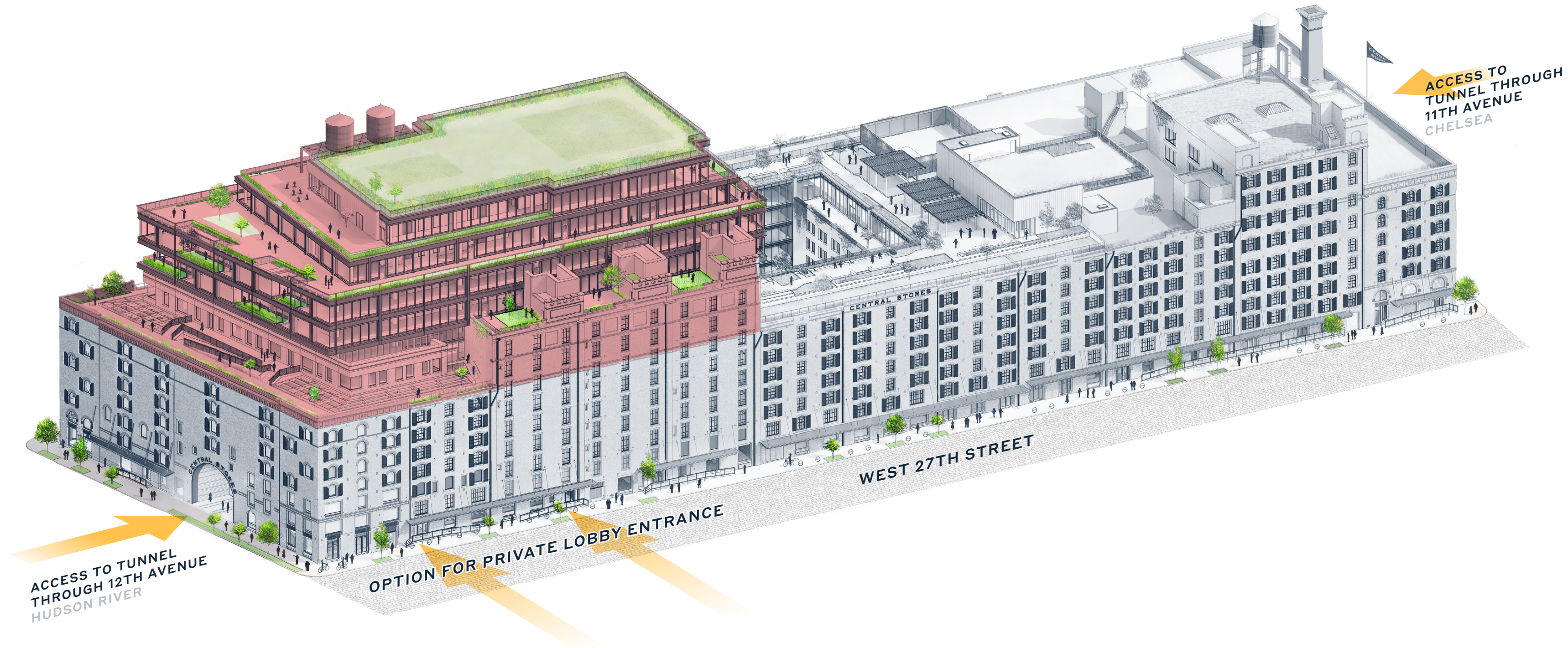
## DOUBLE HEIGHT SPACES

## COMMON AREAS



# THE PENTHOUSE

- Floors 8–14
- Floor Size Range: 22K–59K RSF
- 270K RSF Total
- Double Height Area in Floor 8
- 39K SF Private and Wrap-Around Terraces
- Tenant Delivery: Q4 2023
- TCO: Q4 2024
- Up to 14'-2" Slab-to-Slab Height



# FLOOR 8

THE PENTHOUSE 59K RSF

TEST FIT

## FEATURES

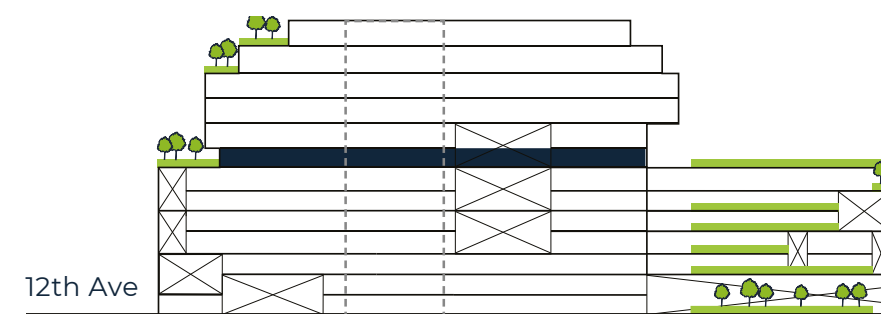
11'-6" – 12'-6" Slab-to-Slab Height

28,390 SF of Outdoor Space

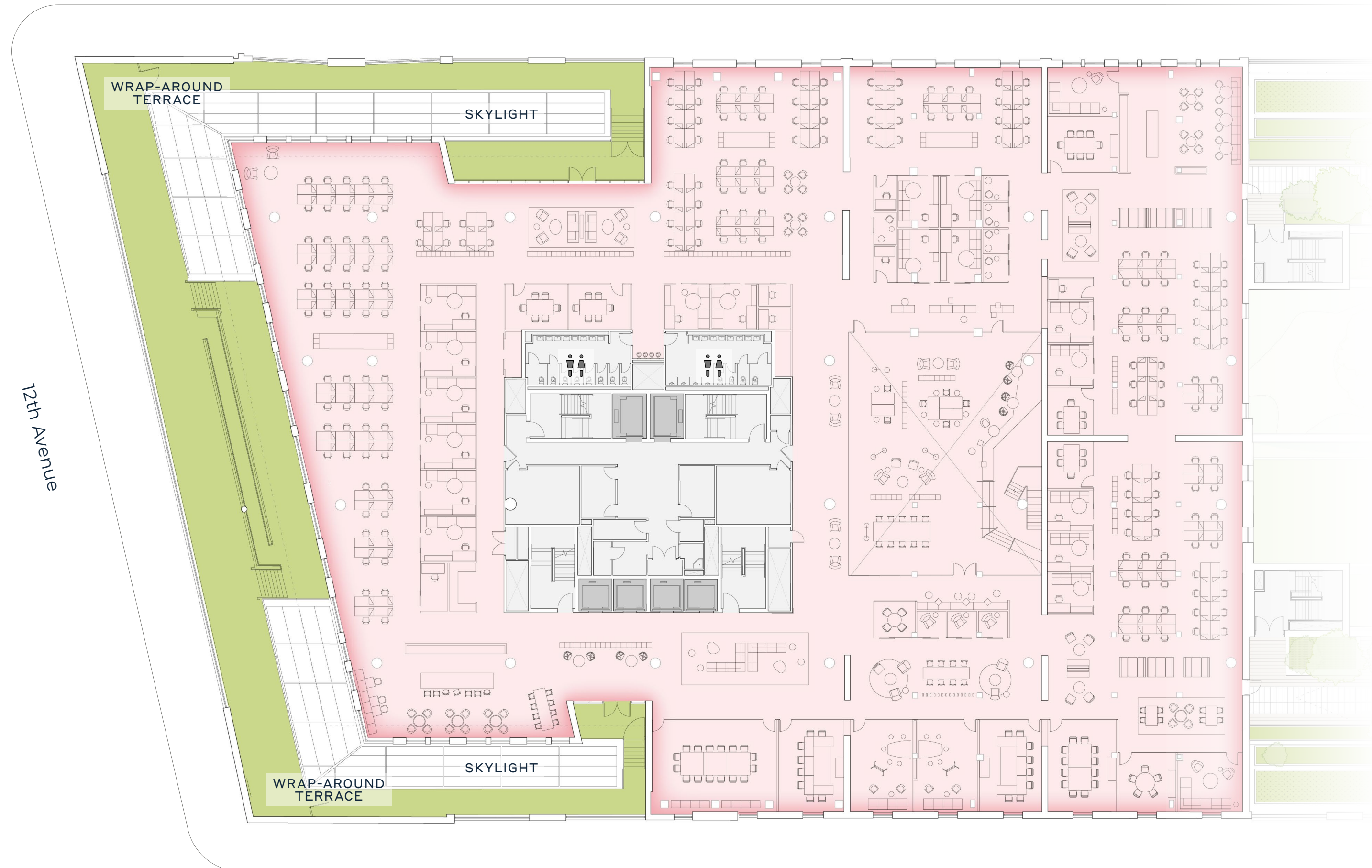
221 Workseats

319 Collaboration Seats

- Workplace
- Double-Height Space
- Mechanicals & Service
- Elevators
- Restroom ♂  
♀



West 28th Street



12th Avenue

West 27th Street

# FLOOR 9

THE PENTHOUSE 51K RSF

TEST FIT

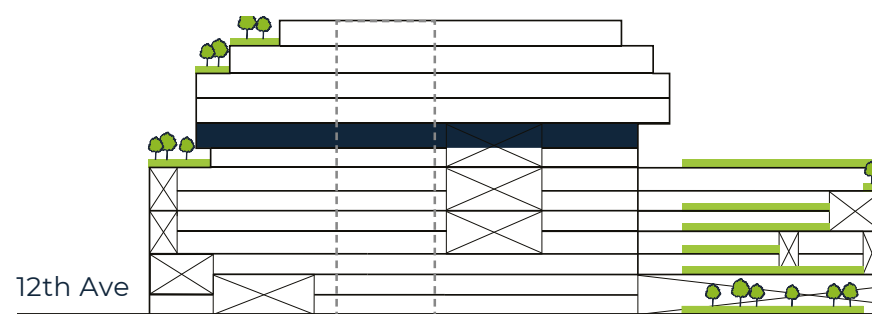
## FEATURES

11'-6" – 13'-11" Slab-to-Slab Height

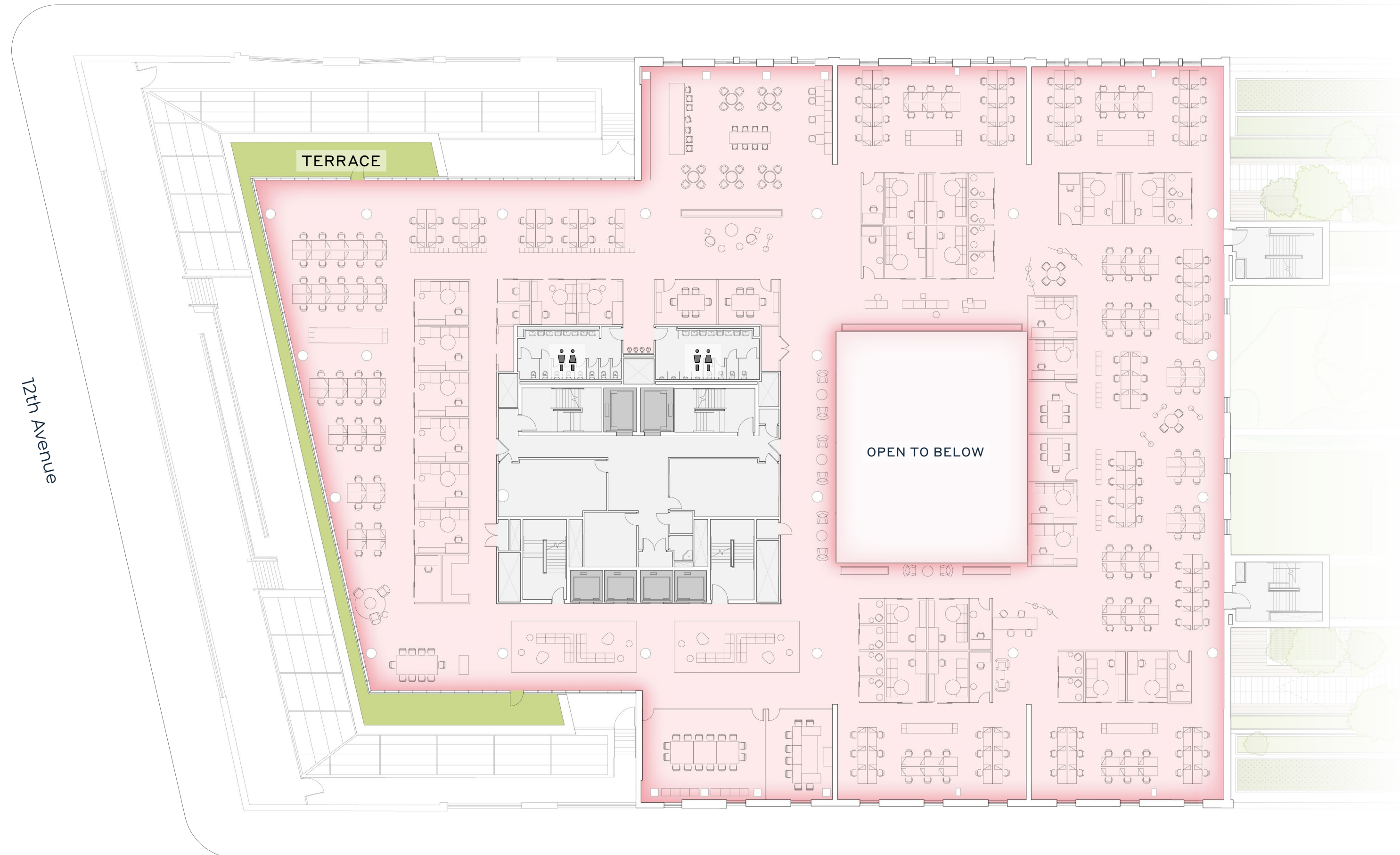
1,620 SF of Outdoor Space

235 Workseats

Workplace	
Mechanicals & Service	
Elevators	
Restroom	



West 28th Street



West 27th Street

# FLOOR 10

THE PENTHOUSE 54K RSF

TEST FIT

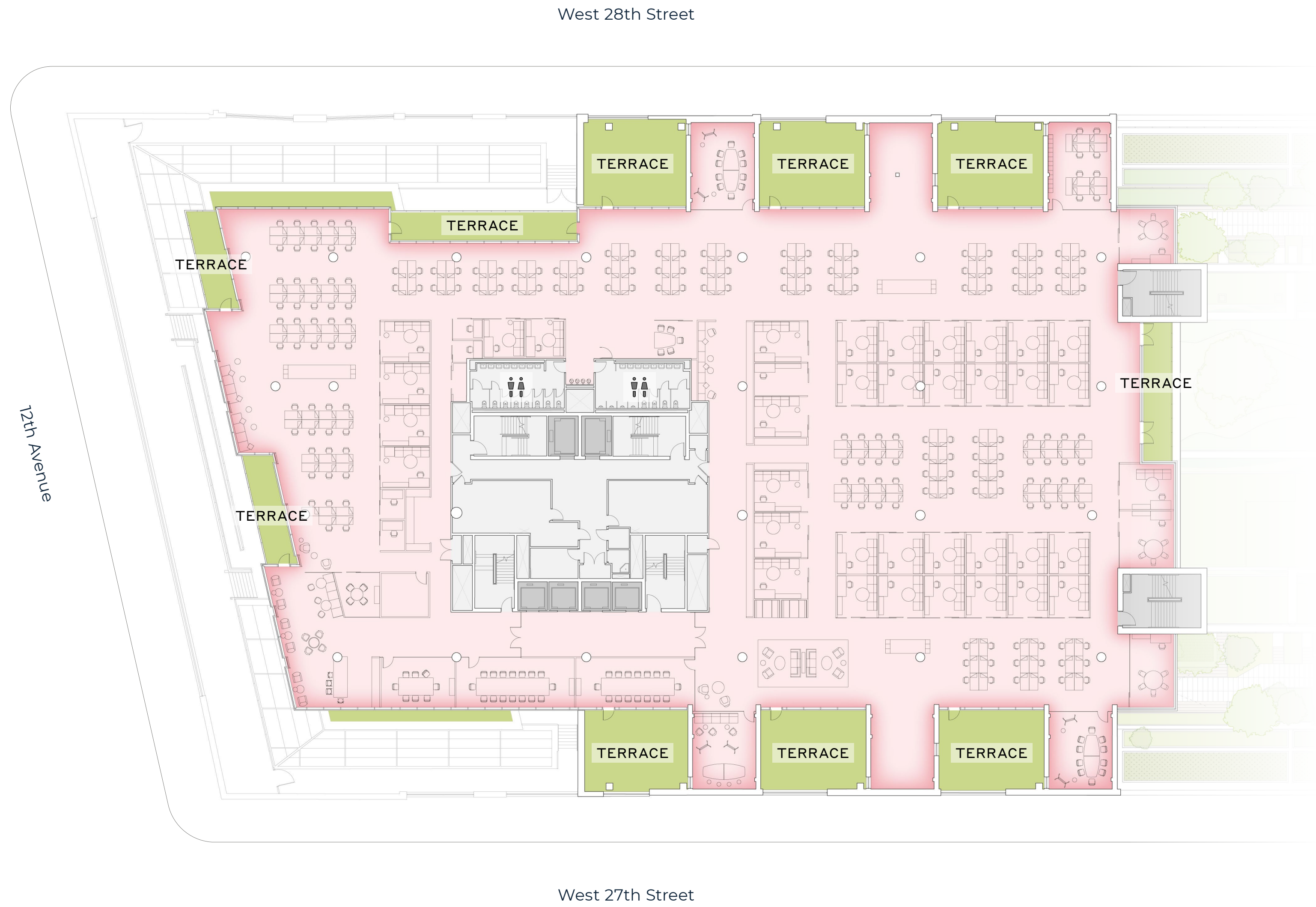
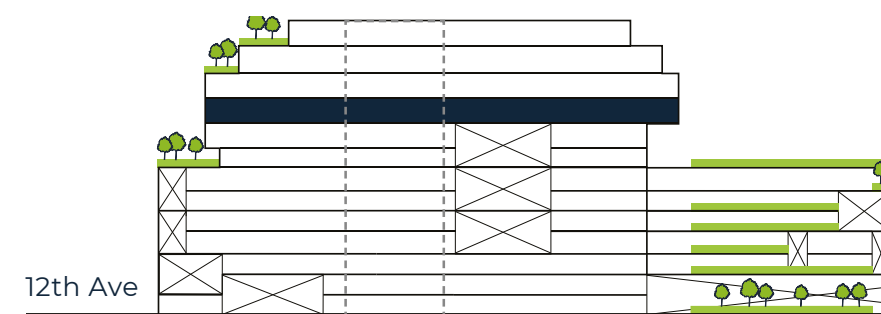
## FEATURES

14'-2" Slab-to-Slab Height

5,575 SF of Outdoor Space

214 Workseats

Workplace	
Mechanicals & Service	
Elevators	
Restroom	



# FLOOR 11

THE PENTHOUSE 49K RSF

TEST FIT

## FEATURES

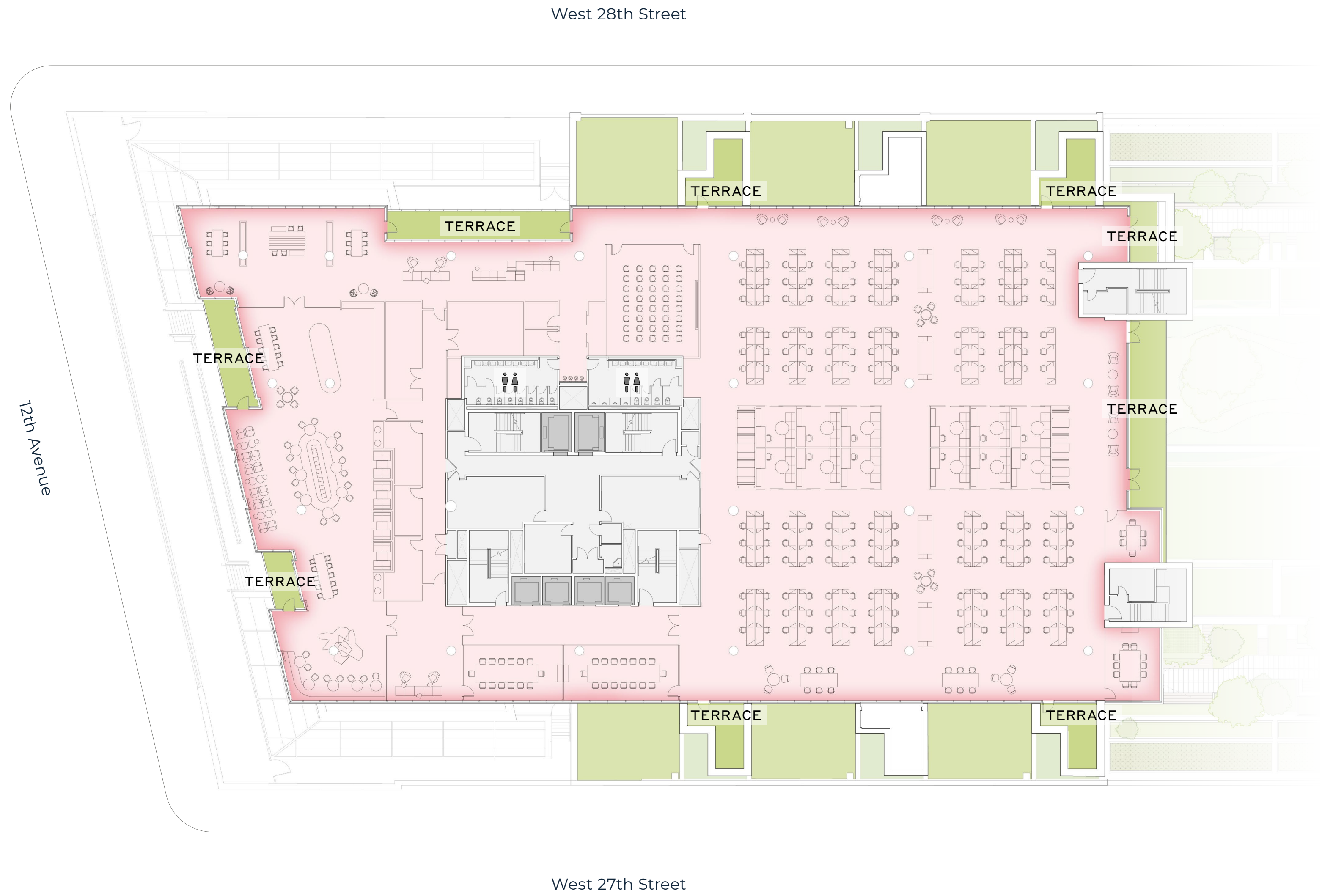
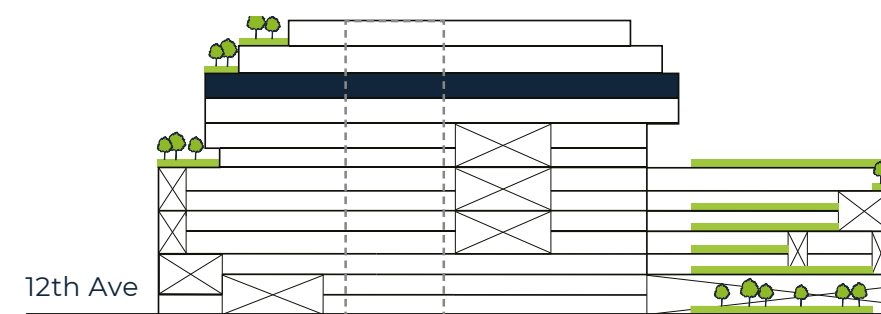
14' Slab-to-Slab Height

2,343 SF of Outdoor Space

174 Workseat

309 Collaboration Seats

- Workplace
- Mechanicals & Service
- Elevators
- Restroom ♂  
♀



# FLOOR 12

THE PENTHOUSE 36K RSF

TEST FIT

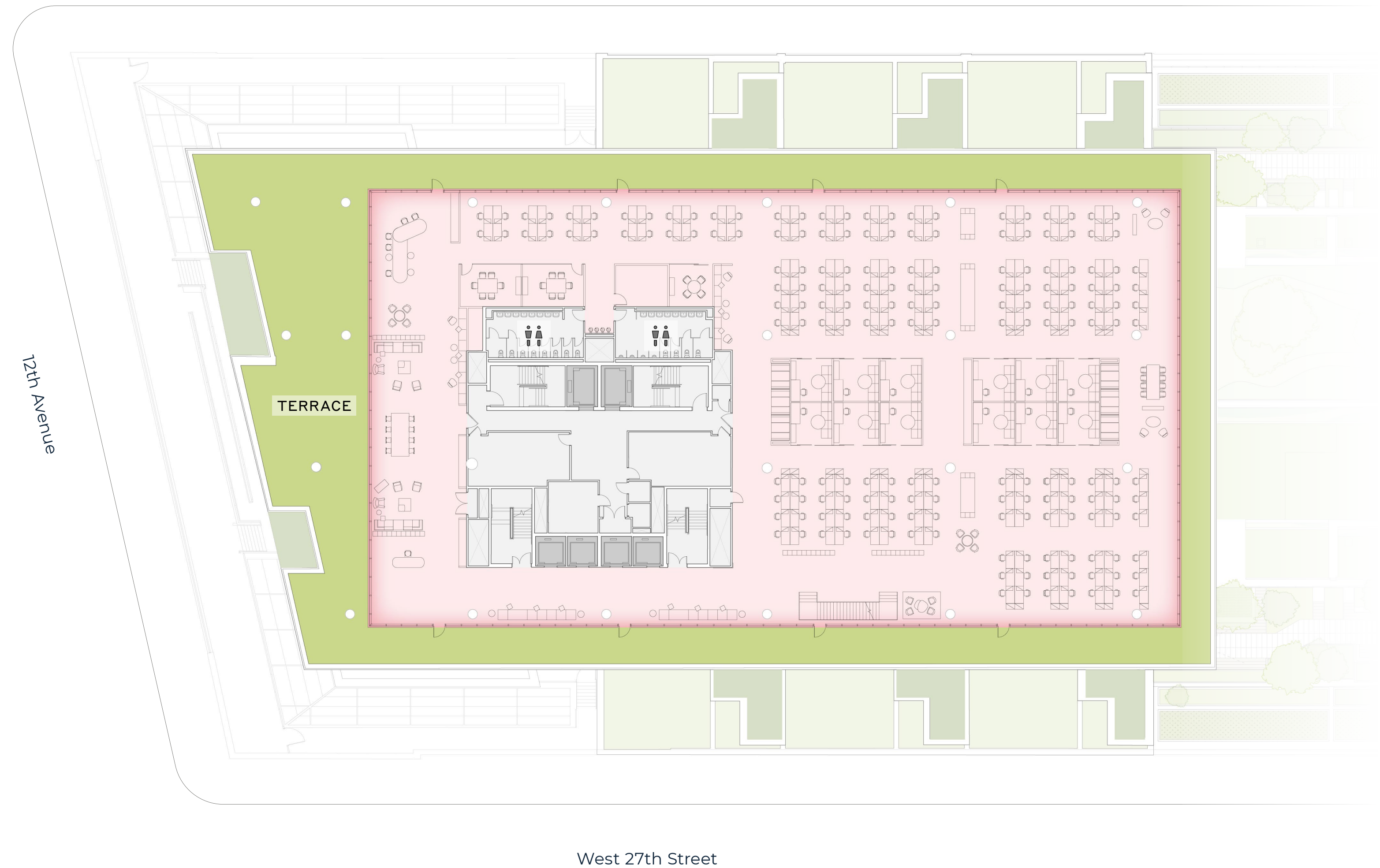
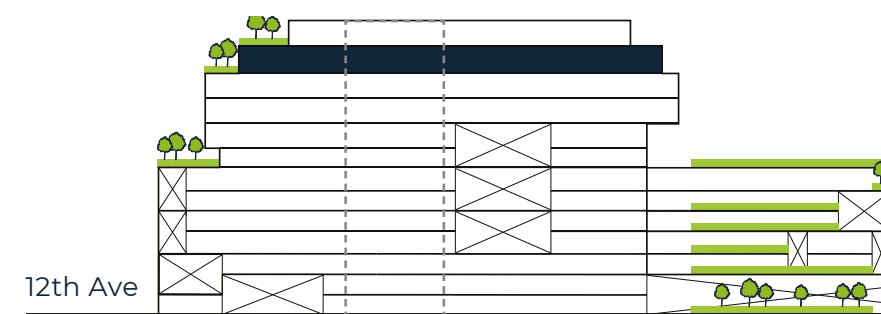
## FEATURES

14' Slab-to-Slab Height

10,040 SF of Outdoor Space

198 Workseats

Workplace	
Mechanicals & Service	
Elevators	
Restroom	



# FLOOR 14

THE PENTHOUSE 22K RSF

TEST FIT

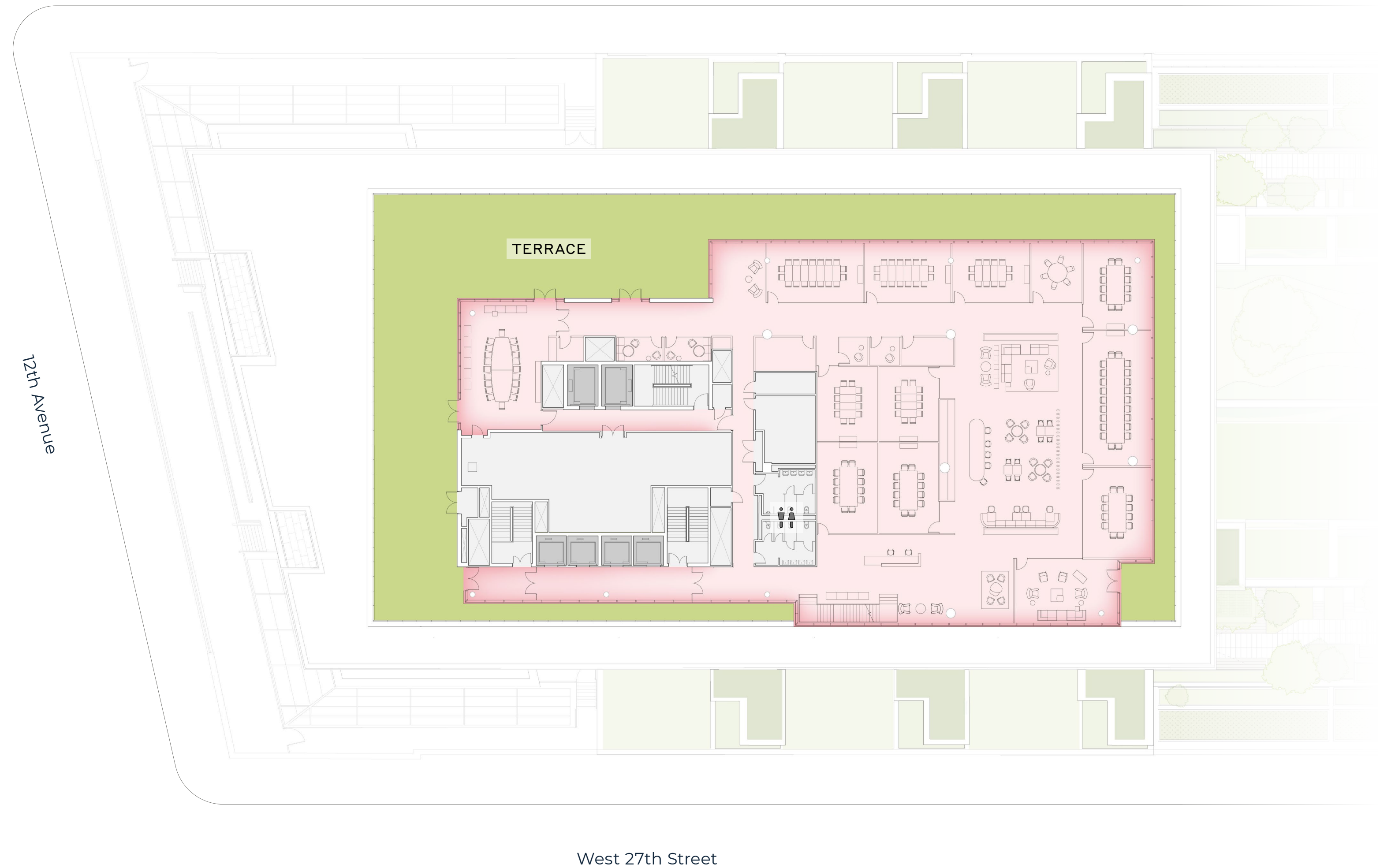
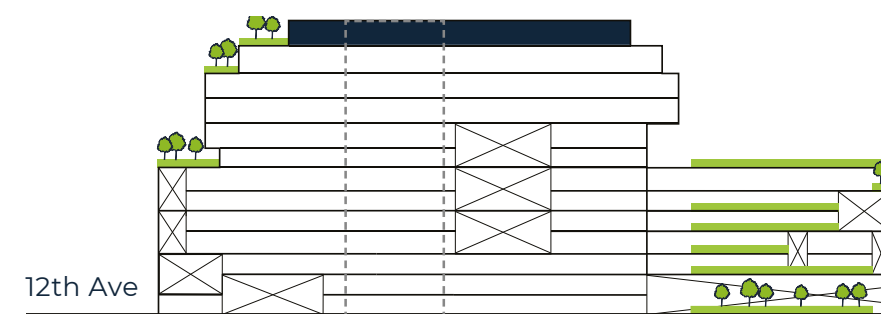
## FEATURES

14' Slab-to-Slab Height

10,040 SF of Outdoor Space

243 Collaboration / Conferencing Seats

- Workplace
- Mechanicals & Service
- Elevators
- Restroom





GALLERY

# DOUBLE-HEIGHT OPPORTUNITY

THE PENTHOUSE



# YOUR NEW FRONT YARD

THE PENTHOUSE





GALLERY

# PENTHOUSE FLOOR WITH PRIVATE TERRACE

THE PENTHOUSE



**CONTACT  
INFORMATION**



**JONATHAN TOOTELL**  
jonathan.tootell@ll-holding.com  
212 920 3388

**JAMES MARCELLINO**  
james.marcellino@ll-holding.com  
646 341 9838



**TED KOLTIS**  
ted.koltis@columbia.reit  
212 433 4103



DEVELOPMENT TEAM

261 11th Avenue  
New York, NY 10001  
[www.terminalwarehouse.nyc](http://www.terminalwarehouse.nyc)

**CONTACT US**



**JOSH KURILOFF**  
josh.kuriloff@cushwake.com  
212 841 7894

**ANDREW BRAVER**  
andrew.braver@cushwake.com  
212 841 5976

OFFICE LEASING TEAM

**ALAN SCHMERZLER**  
alan.schmerzler@cushwake.com  
212 841 5930

**STEVEN SOUTENDIJK**  
steven.soutendijk@cushwake.com  
212 713 6845

RETAIL LEASING TEAM

**GUS FIELD**  
a.field@cushwake.com  
212 841 5965

**ANTHONY LOPRESTI**  
anthony.lopresti@cushwake.com  
212 841 7739

**NICHOLAS DYSENCHUK**  
nicholas.dysenchuk@cushwake.com  
212 841 7739

**CATHERINE MERCK**  
catherine.merck@cushwake.com  
212 698 2621

**PATRICK O'ROURKE**  
patrick.orourke@cushwake.com  
212 660 7777

**ERIC HAZEN**  
eric.hazen@cushwake.com  
212 841 7809

**HEATHER THOMAS**  
heather.thomas@cushwake.com  
212 841 7520

**SEAN MORAN**  
sean.moran@cushwake.com  
212 841 7668