



**Keegan & Coppin**  
COMPANY, INC.

SALE / LEASE

1007 GRAVENSTEIN HWY  
SEBASTOPOL, CA

**RARE SEBASTOPOL WAREHOUSE  
OPPORTUNITY**



DISTRIBUTION  
READY



CLEAR SPAN  
WAREHOUSE



HIGH BAY  
CLEARANCE

Go beyond broker.

PRESENTED BY:

**DEMI BASILIADES, SREA**  
LIC # 02080190 (707) 664-1400 , EXT 305  
[DBASILIADES@KEEGANCOPPIN.COM](mailto:DBASILIADES@KEEGANCOPPIN.COM)

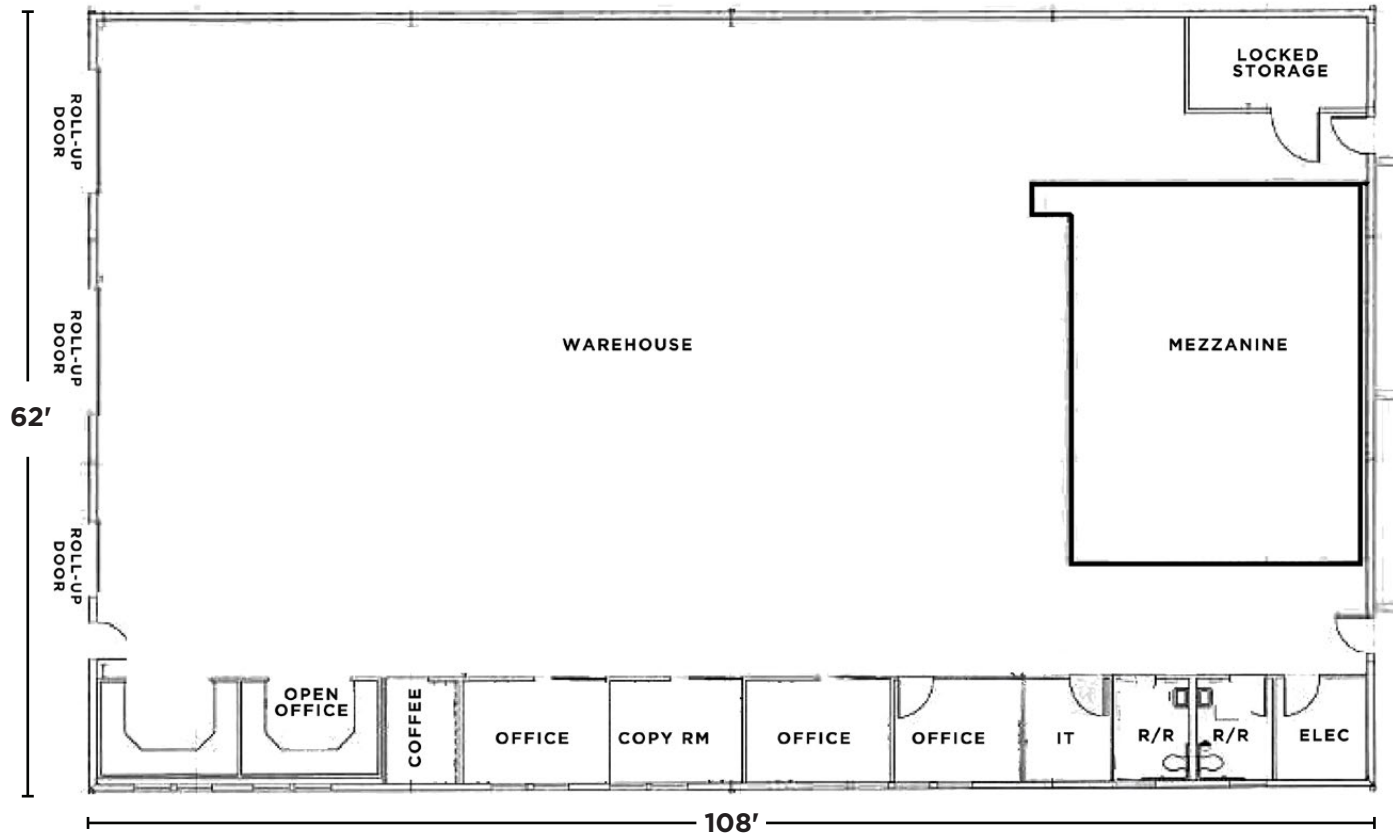


# WAREHOUSE DETAILS



1007 GRAVENSTEIN HWY.  
SEBASTOPOL, CA

**CLASS A WAREHOUSE  
FOR SALE OR LEASE**



## TERMS

### Sale Price

Available on Request

### Lease Rate

Available on Request

### Terms

Tenant Improvements  
Negotiable

## HIGHLIGHTS

- 6,696+/- SF Warehouse
- Bonus Mezzanine
- Three (3) Roll-up Doors
- Racking System in Place
- 30+ Foot Ceilings
- Five (5) Offices & Kitchenette
- Private Restrooms

## PRESENTED BY:

DEMI BASILIADES, SREA  
KEEGAN & COPPIN CO., INC.  
LIC # 02080190 (707) 664-1400 , EXT 305  
DBASILIADES@KEEGANCOPPIN.COM



# PROPERTY PHOTOS



1007 GRAVENSTEIN HWY.  
SEBASTOPOL, CA

**CLASS A WAREHOUSE  
FOR SALE OR LEASE**



**PRESENTED BY:**

**DEMI BASILIADES, SREA  
KEEGAN & COPPIN CO., INC.  
LIC # 02080190 (707) 664-1400 , EXT 305  
DBASILIADES@KEEGANCOPPIN.COM**

The above information, while not guaranteed, has been secured from sources we believe to be reliable. Submitted subject to error, change or withdrawal. An interested party should verify the status of the property and the information herein.



# PROPERTY AERIALS



1007 GRAVENSTEIN HWY.  
SEBASTOPOL, CA

CLASS A WAREHOUSE  
FOR SALE OR LEASE



PRESENTED BY:

DEMI BASILIADES, SREA  
KEEGAN & COPPIN CO., INC.  
LIC # 02080190 (707) 664-1400 , EXT 305  
DBASILIADES@KEEGANCOPPIN.COM



# AERIAL MAP



1007 GRAVENSTEIN HWY.  
SEBASTOPOL, CA

**CLASS A WAREHOUSE  
FOR SALE OR LEASE**



**PRESENTED BY:**

DEMI BASILIADES, SREA  
KEEGAN & COPPIN CO., INC.  
LIC # 02080190 (707) 664-1400 , EXT 305  
DBASILIADES@KEEGANCOPPIN.COM

The above information, while not guaranteed, has been secured from sources we believe to be reliable. Submitted subject to error, change or withdrawal. An interested party should verify the status of the property and the information herein.