

Suite #201
4,620 Square Feet
(Balance of 2nd floor)

- GENERAL NOTES:**
- PROJECT SHALL BE CONSTRUCTED IN CONFORMANCE WITH THE REQUIREMENTS OF THE INTERNATIONAL BUILDING CODE 2006, ASME, 2008 NFPA 101 AND OTHER CODES AND ORDINANCES AS APPLICABLE.
 - EXISTING BLDG. CONSTRUCTION: EQ. TO TYPE V-B (INT'L. BLDG. CODE); TYPE V-000 (NFPA 220).
 - TENANT OCCUPANCY CLASSIFICATION: GROUP B - BUSINESS IN ACCORDANCE WITH SECTION 304 OF THE INT'L. BLDG. CODE. EXISTING BUILDING IS SPRINKLERED IN ACCORDANCE WITH NFPA 13. MAX. OCCUPANT LOAD SHALL NOT EXCEED 48 PERSONS.
 - EXIT LIGHTS SHALL BE EQ. TO LITHONIA "QUANTUM" SERIES L.E.D., 120 V PRIMARY CIRCUIT, 2-HR. BATTERY ILLUMINATION.

11204 Racetrack Rd
Ocean Pines, MD 21811
(rear most building)

- BE PROVIDED BY RESPECTIVE TRADE CONTRACTORS AS REQUIRED.
- STAIRS, STEPS, AND STAIRWAYS SHALL COMPLY WITH SECTION 1003.3.3 OF THE INT'L. BLDG. CODE 2003 INCLUDING WOOD (1003.3.3.1), TREADS/RISERS (1003.3.3.3), LANDINGS (1003.3.3.4), AND HANDRAILS (1003.3.3.11).
 - INDICATES ADA COMPLIANT FIXTURES.
 - REFER TO SHELL CONSTRUCTION DOCUMENTS FOR EXISTING DOORS, RATED WALL & FLOOR ASSEMBLIES, EXIT AND EMERGENCY LIGHTING, AND OTHER FIRE PROTECTION DEVICES.

- INTERIOR FINISH NOTES:**
- ALL STUD WALLS SHALL BE BRICKED @ 12"-0" O.C. MAX. BY INTERSECTING WALLS OR BY DIAGONAL (45) STUD MATERIAL FROM 1'-0" ABOVE LOWEST APPLICABLE CEILING TO TOP OF FLOOR OR ROOF STRUCTURE. MEMBER ABOVE.
 - REFER TO FLOOR PLANS FOR LOCATIONS OF FIRE RATED WALL ASSEMBLIES.
 - COLLIM SURROUND MATERIALS AND FINISHES TO MATCH ADJACENT WALLS UNLESS INDICATED OTHERWISE ON PLANS.

- FIRE EXTINGUISHERS:**
- FIRE EXTINGUISHERS - NON-FOOD SERVICE FIRE EXTINGUISHERS SHALL BE MULTI-PURPOSE DRY CHEMICAL EXTINGUISHERS RATED AS "A,B,C" TYPE. THE MINIMUM "UL" RATING SHALL BE 4-A-B-C, IN ENAMELED STEEL CONTAINER WITH A 10-POUND MINIMUM NOMINAL CAPACITY. FOOD SERVICE FIRE EXTINGUISHERS SHALL BE WET CHEMICAL RATED AS "K" TYPE, 2.5 GALLON CAPACITY, 100 PSI OPERATING PRESSURE, 75-80 SECOND DISCHARGE, 8-12 FT. RANGE. EXTINGUISHERS SHALL BE SECURELY MOUNTED TO THE WALL WITH BRACKETS OR CABINETS MANUFACTURED OR RECOMMENDED BY THE MANUFACTURER OF THE EXTINGUISHER. FIRE EXTINGUISHERS SHALL BEAR THE PROPER LABELS AND CONFORM TO THE "NATIONAL FIRE CODES". IF MACHINERY OR OTHER OBJECTS WOULD HAMPER ACCESS TO AN EXTINGUISHER IN THE LOCATION SHOWN, THE EXTINGUISHER SHALL BE RELOCATED TO A PLACE WHERE THERE WILL BE FREE ACCESS TO IT. DO NOT RELOCATE THE EXTINGUISHER MORE THAN 10 FEET FROM THE LOCATION SHOWN. HEIGHTS - EXTINGUISHER MOUNTING HEIGHT SHALL BE BASED ON THE FOLLOWING: FOR WEIGHTS LESS THAN FORTY (40) POUNDS TOP OF EXTINGUISHER TO BE AT 4'-6", FOR WEIGHTS OVER FORTY (40) POUNDS TOP OF EXTINGUISHER TO BE AT 3'-0".

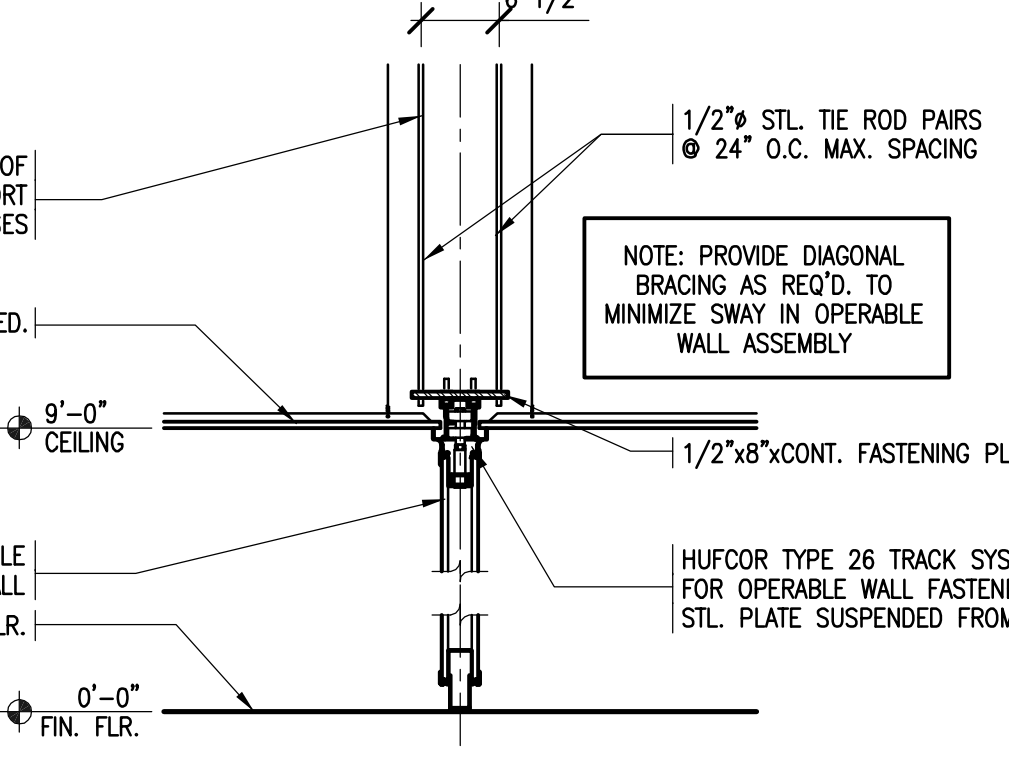
- INSTALLATION OF MATERIALS:**
- ALL DOORS, CASEWORK, INSULATION, WALL FRAMING, AND OTHER PRODUCTS AND MATERIALS SHALL BE INSTALLED PER MANUFACTURER'S RECOMMENDATIONS.
- ALL WORK SHALL CONFORM TO CONSTRUCTION INDUSTRY STANDARDS.

- PAINTING SPECIFICATIONS:**
- SURFACES TO BE PAINTED INCLUDE INTERIOR MASONRY WALLS, GYPSUM BD. ASSEMBLIES, INTERIOR AND EXTERIOR DOORS & FRAMES, AND EXPOSED METALS.
- THE COLORS OF PAINT USED THROUGHOUT THE PROJECT SHALL BE APPROVED BY THE OWNER.
- SURFACE PREPARATION AND PAINT APPLICATION SHALL BE AS RECOMMENDED BY THE PAINT MANUFACTURER.

- BRAND NAMES ARE USED ONLY TO ESTABLISH THE TYPE AND QUALITY OF PAINTS REQUIRED. BRAND NAMES OF M.A.B. PAINTS ARE USED UNLESS NOTED OTHERWISE. USE SPECIFIED PAINT OR EQUAL AS APPROVED BY THE ARCHITECT. ACCEPTABLE MANUFACTURERS INCLUDE SHERWIN-WILLIAMS, BENJAMIN MOORE, DURON, & I.C.I. BULLUX.
- SPECIFIED NUMBER OF FINISH COATS IS THE MINIMUM ACCEPTABLE. APPLY ADDITIONAL COATS OF THE FINISH PAINT ON ALL MATERIAL WHERE THE SPECIFIED NUMBER OF FINISH COATS DO NOT COMPLETELY COVER THE COLOR OF THE PRIMER COATS AND WHERE THE SPECIFIED NUMBER OF FINISH COATS DO NOT PROVIDE A SURFACE WITH UNIFORM COLOR AND SHADE.

- INTERIOR MASONRY:**
- PRIMER COAT (M.A.B. BLOCK KOTE #2000 BLOCK FILLER)
FINISH COATS - 2 COATS (M.A.B. PLY-TILE 530 LATEX ACRYLIC EPOXY COATING 051 LINE)
- INTERIOR & EXTERIOR FERROUS METAL (I.E. - HOLLOW METAL AND ALL OTHER NON-STAINLESS STEEL THAT IS NOT GALVANIZED):**
- PRIMER COAT (M.A.B. RUST-INHIBITIVE ACRYLIC, RUST-O-LASTIC HYDRO II PRIMER)
FINISH COAT - 2 COATS (M.A.B. RUST-O-LASTIC GLOSS ACRYLIC FINISH 043 LINE)

- DRYWALL IN PLACES WHERE A WATER-RESISTANT PAINT IS REQUIRED:**
- PRIMER COAT (M.A.B. RICH LUX SEALER UNDERCOATER 037-154)
FINISH COATS - 2 COATS (M.A.B. RICH-LUX LATEX EGG SHELL ENAMEL 029 LINE)
- STANDARD DRYWALL:**
- PRIME COAT (M.A.B. RICH LUX PRIME FAST 037-138)
FINISH COATS - 2 COATS (M.A.B. RICH-LUX LATEX EGG SHELL ENAMEL 029 LINE)
- INTERIOR PAINTED WOOD:**
- PRIMER COAT (M.A.B. RICH-LUX SEALER UNDERCOATER 037-154)
FINISH COAT - 2 COATS (M.A.B. RICH-LUX ARCHITECTURAL HIGH GLOSS ACRYLIC ENAMEL 022 LINE)
- INTERIOR STAINED WOOD:**
- STAIN COAT (M.A.B. RICH-LUX ALKYD PENETRATING WOOD STAIN 062 LINE)
FINISH COAT - 2 COATS (M.A.B. RICH-LUX URETHANE WOOD FINISH, SATIN, 086-900 LINE)

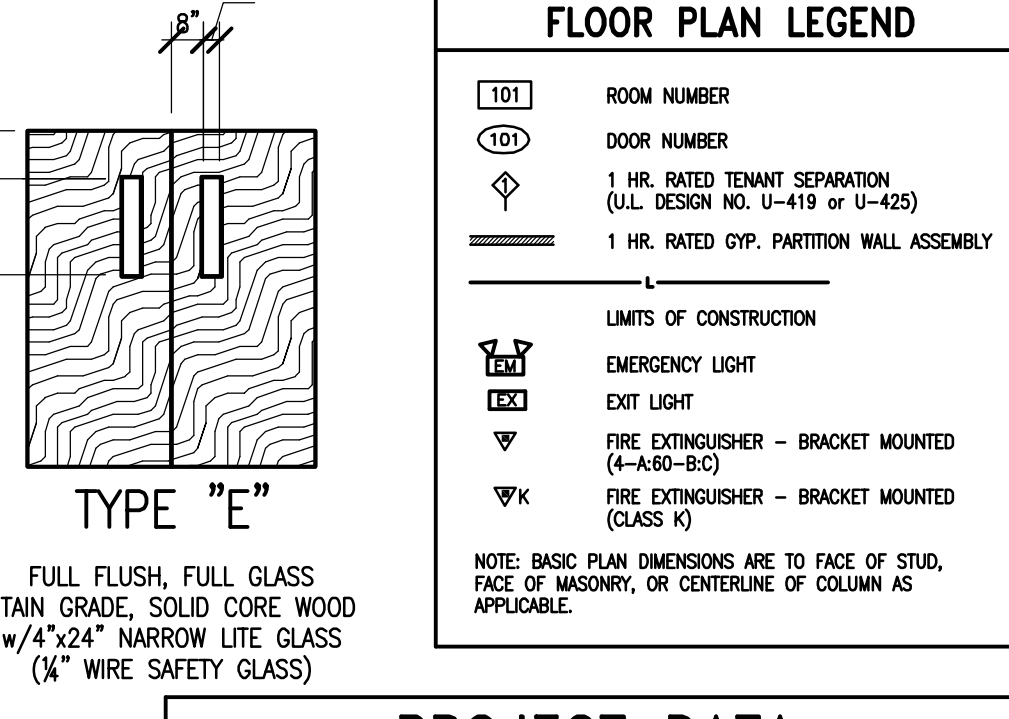
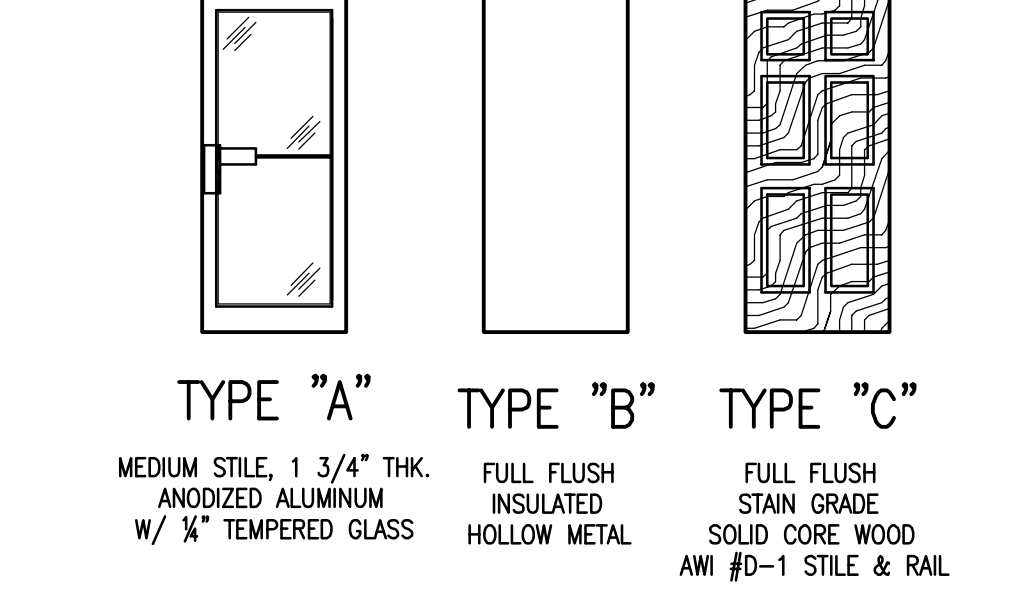


DOOR SCHEDULE													
DOOR NO.	TYPE	SIZE	THK.	FINISH	FRAME		LABEL	DETAILS				REMARKS	
					MATERIAL	FINISH		HEAD	JAMB	SILL	OTHER		
101A	C	3'-0" x 7'-0"	1 3/4"	STAINED	HOLLOW MTL.	PAINTED						HS-4	* NOT IN CONTRACT (EXISTING)
101B	C	3'-0" x 7'-0"	1 3/4"	STAINED	HOLLOW MTL.	PAINTED						HS-6	* NOT IN CONTRACT (EXISTING)
101C	G	3'-0" x 7'-0"	1 3/4"	STAINED	HOLLOW MTL.	PAINTED						HS-5	* ADD DOOR CLOSER
101D	H	(4) 1'-5" x 7'-0"	1 3/4"	STAINED	WOOD	PAINTED						HS-9	
101E	C	3'-0" x 7'-0"	1 3/4"	STAINED	HOLLOW MTL.	PAINTED						HS-5	
101F	C	3'-0" x 7'-0"	1 3/4"	STAINED	HOLLOW MTL.	PAINTED						HS-5	
101G	C	3'-6" x 7'-0"	1 3/4"	STAINED	WOOD	PAINTED						HS-10	
101H	C	3'-0" x 7'-0"	1 3/4"	STAINED	HOLLOW MTL.	PAINTED						HS-2	
101I	C	3'-0" x 7'-0"	1 3/4"	STAINED	HOLLOW MTL.	PAINTED						HS-6	
101J	J	(2) 3'-0" x 7'-0"	1 3/4"	STAINED	HOLLOW MTL.	PAINTED						HS-6	
101L	C	3'-0" x 7'-0"	1 3/4"	STAINED	HOLLOW MTL.	PAINTED						HS-3	
101M	C	3'-0" x 7'-0"	1 3/4"	STAINED	HOLLOW MTL.	PAINTED						HS-2	* ADD DOOR CLOSER
102A	D	3'-0" x 7'-0"	1 3/4"	STAINED	HOLLOW MTL.	PAINTED						HS-4	* NOT IN CONTRACT (EXISTING)
102B	C	3'-0" x 7'-0"	1 3/4"	STAINED	HOLLOW MTL.	PAINTED						HS-5	* NOT IN CONTRACT (EXISTING)
102C	C	3'-0" x 7'-0"	1 3/4"	STAINED	HOLLOW MTL.	PAINTED						HS-6	* NOT IN CONTRACT (EXISTING)
102D	C	3'-0" x 7'-0"	1 3/4"	STAINED	HOLLOW MTL.	PAINTED						HS-4	* NOT IN CONTRACT (EXISTING)
102E	C	3'-0" x 7'-0"	1 3/4"	STAINED	HOLLOW MTL.	PAINTED						HS-5	* NOT IN CONTRACT (EXISTING)
102F	C	3'-0" x 7'-0"	1 3/4"	STAINED	HOLLOW MTL.	PAINTED						HS-2	* NOT IN CONTRACT (EXISTING)
102G	C	2'-4" x 7'-0"	1 3/4"	STAINED	HOLLOW MTL.	PAINTED						HS-3	* NOT IN CONTRACT (EXISTING)
103A	C	3'-0" x 7'-0"	1 3/4"	STAINED	HOLLOW MTL.	PAINTED						HS-4	* NOT IN CONTRACT (EXISTING)
104A	C	3'-0" x 7'-0"	1 3/4"	STAINED	HOLLOW MTL.	PAINTED						HS-4	* NOT IN CONTRACT (EXISTING)
104B	C	3'-0" x 7'-0"	1 3/4"	STAINED	WOOD	PAINTED						HS-5	* NOT IN CONTRACT (EXISTING)
104C	C	3'-0" x 7'-0"	1 3/4"	STAINED	WOOD	PAINTED						HS-2	* NOT IN CONTRACT (EXISTING)
104D	C	3'-0" x 7'-0"	1 3/4"	STAINED	WOOD	PAINTED						HS-6	* NOT IN CONTRACT (EXISTING)
104E	F	(2) 3'-0" x 7'-0"	1 3/4"	STAINED	WOOD	PAINTED						HS-6	* NOT IN CONTRACT (EXISTING)
104F	C	3'-0" x 7'-0"	1 3/4"	STAINED	WOOD	PAINTED						HS-2	* NOT IN CONTRACT (EXISTING)
104G	C	3'-0" x 7'-0"	1 3/4"	STAINED	WOOD	PAINTED						HS-2	* NOT IN CONTRACT (EXISTING)
201A	E	(2) 3'-0" x 7'-0"	1 3/4"	STAINED	HOLLOW MTL.	PAINTED	60 MIN.					HS-7	* NOT IN CONTRACT (EXISTING)
201B	C	3'-0" x 7'-0"	1 3/4"	STAINED	WOOD	PAINTED						HS-2	* NOT IN CONTRACT (EXISTING)
201C	C	3'-0" x 7'-0"	1 3/4"	STAINED	WOOD	PAINTED						HS-6	* NOT IN CONTRACT (EXISTING)
201D	C	3'-0" x 7'-0"	1 3/4"	STAINED	WOOD	PAINTED						HS-5	* NOT IN CONTRACT (EXISTING)
201E	C	3'-0" x 7'-0"	1 3/4"	STAINED	WOOD	PAINTED						HS-5	* NOT IN CONTRACT (EXISTING)
201F	C	3'-0" x 7'-0"	1 3/4"	STAINED	WOOD	PAINTED						HS-5	* NOT IN CONTRACT (EXISTING)
201G	D	3'-0" x 7'-0"	1 3/4"	STAINED	WOOD	PAINTED						HS-5	* NOT IN CONTRACT (EXISTING)
201H	D	3'-0" x 7'-0"	1 3/4"	STAINED	WOOD	PAINTED						HS-5	* NOT IN CONTRACT (EXISTING)
201I	D	3'-0" x 7'-0"	1 3/4"	STAINED	WOOD	PAINTED						HS-5	* NOT IN CONTRACT (EXISTING)
201K	C	3'-0" x 7'-0"	1 3/4"	STAINED	WOOD	PAINTED						HS-5	* NOT IN CONTRACT (EXISTING)
201L	C	3'-0" x 7'-0"	1 3/4"	STAINED	WOOD	PAINTED						HS-5	* NOT IN CONTRACT (EXISTING)
201M	C	3'-0" x 7'-0"	1 3/4"	STAINED	WOOD	PAINTED						HS-5	* NOT IN CONTRACT (EXISTING)
201N	C	3'-0" x 7'-0"	1 3/4"	STAINED	WOOD	PAINTED						HS-5	* NOT IN CONTRACT (EXISTING)
201P	C	3'-0" x 7'-0"	1 3/4"	STAINED	WOOD	PAINTED						HS-5	* NOT IN CONTRACT (EXISTING)
201Q	D	3'-0" x 7'-0"	1 3/4"	STAINED	WOOD	PAINTED						HS-5	* NOT IN CONTRACT (EXISTING)
201R	D	3'-0" x 7'-0"	1 3/4"	STAINED	WOOD	PAINTED						HS-2	* NOT IN CONTRACT (EXISTING)
201S	C	3'-0" x 7'-0"	1 3/4"	STAINED	WOOD	PAINTED						HS-5	* NOT IN CONTRACT (EXISTING)
201T	C	3'-0" x 7'-0"	1 3/4"	STAINED	WOOD	PAINTED						HS-5	* NOT IN CONTRACT (EXISTING)
201U	C	3'-0" x 7'-0"	1 3/4"	STAINED	WOOD	PAINTED						HS-5	* NOT IN CONTRACT (EXISTING)
201V	C	3'-0" x 7'-0"	1 3/4"	STAINED	WOOD	PAINTED						HS-5	* NOT IN CONTRACT (EXISTING)
201W	C	3'-0" x 7'-0"	1 3/4"	STAINED	WOOD	PAINTED						HS-5	* NOT IN CONTRACT (EXISTING)
201X	C	3'-0" x 7'-0"	1 3/4"	STAINED	WOOD	PAINTED						HS-5	* NOT IN CONTRACT (EXISTING)
201Y	D	3'-0" x 7'-0"	1 3/4"	STAINED	WOOD	PAINTED						HS-5	* NOT IN CONTRACT (EXISTING)
201Z	C	3'-0" x 7'-0"	1 3/4"	STAINED	WOOD	PAINTED						HS-5	* NOT IN CONTRACT (EXISTING)
204A	C	3'-0" x 7'-0"	1 3/4"	STAINED	HOLLOW MTL.	PAINTED	60 MIN.					HS-4	* NOT IN CONTRACT (EXISTING)
204B	C	3'-0" x 7'-0"	1 3/4"	STAINED	HOLLOW MTL.	PAINTED						HS-4	* NOT IN CONTRACT (EXISTING)

- DOOR AND FRAME SPECIFICATIONS:**
- ALL STEEL DOORS & FRAMES SHALL COMPLY WITH ANS/SDI-100 AND SDI 177. ALL FLUSH WOOD DOORS SHALL COMPLY WITH NWMA QUALITY STD. 1.5.1 AND ANS SECTION 1300. DOORS SHALL BE SOLID CORE WITH VENEER FACES OF PLAIN SLICED, NATURAL BRCH, AWH CUSTOM GRADE (NPA GRADE B VENEER), PG-7 BONDED PARTIAL BOARD CORE 7-PLY. RATED FRAMES SHALL CARRY UNDERWRITERS LABORATORY (U.L.) OR WARNOCK-HERSEY (WH) LABEL. RATED DOOR & FRAME ASSEMBLIES SHALL COMPLY WITH NFPA 80 AND ASTM E 152.
 - EXTERIOR STEEL DOORS SHALL BE GRADE II, INSULATED, EXTRA HEAVY-DUTY, MODEL 2, 16 GA. GALV. STL. FACES. INTERIOR STEEL DOORS SHALL BE GRADE II, HEAVY-DUTY, MODEL 2, 18 GA. COLD-ROLLED STL. FACES. ALL DOORS SHALL BE FACTORY PRIMED.
 - EXTERIOR FRAMES SHALL BE WELDED CONST. 14 GA. FORMED GALV. STEEL WITH MITERED CORNERS. INTERIOR FRAMES SHALL BE KNOCK-DOWN TYPE 16 GA. FORMED STEEL WITH MITERED CORNERS. ALL FRAMES SHALL BE FACTORY PRIMED.
 - ALL HARDWARE SHALL COMPLY WITH APPLICABLE ACCESSIBILITY (ADA) REQUIREMENTS.
 - COORDINATE KEYING AND ADDITIONAL LOCKING REQUIREMENTS WITH OWNER.
 - ALL SWING DOORS SHALL HAVE THE FOLLOWING ACCESSORIES:
 - LOCKSETS EQUAL TO THE YALE 5400N SERIES WITH "PACIFIC BEACH" - PB TRIM. REFER TO HARDWARE SETS FOR FUNCTION. LOCKSETS SHALL COMPLY WITH ANS A156.2, 1996, SERIES 4000 FOR KEYPED LOCKS.
 - EXIT DEVICES EQUAL TO THE YALE 7200N SERIES WITH #500 SERIES NARROW ESCOUTCHON TRIM - PB "PACIFIC BEACH" LEVER STYLE - WHERE TRIM INDICATED. EXIT DEVICES SHALL COMPLY WITH ANS A156.3 GRADE 1 REQUIREMENTS.
 - CLOSERS EQUAL TO THE YALE 4020/4420 SERIES.
 - EXTERIOR DOORS SHALL HAVE WEATHER-STRIPPING EQUAL TO ZERO INT'L. #326/328, THRESHOLD EQUAL TO ZERO INT'L. #564 TYPE, AND SWEEP EQUAL TO ZERO INT'L. #96 TYPE.
 - E. BUT HINGES SHALL BE EQ. TO #268F BY HAGAR HINGE CO., 5 KNUCKLE, STD. WEIGHT, BALL-BRG., FULL MORTISE; DOOR STOPS SHALL BE EQ. TO #236F BY HAGAR HINGE CO. FOR WALL MOUNTS, AND #241F BY HAGAR HINGE CO. FOR FLOOR MOUNTS.
 - PROVIDE VANDAL PROOF VISION FRAME KITS WHERE DOOR GLAZING INDICATED. PROVIDE INVERTED "Y" BLADE LOUVER KIT (30K FREE AIR) WHERE DOOR LOUVERS INDICATED.
 - DOOR HOLDERS SHALL BE EQ. TO #268F BY HAGAR HINGE CO. FOR FLOOR/WALL AND SHALL BE EQ. TO #590 SERIES BY SARGENT MANUF. CO. FOR OVERHEAD HOLDERS.
 - BORED SECURITY DEADBOLTS SHALL BE GRADE 2, SINGLE CYLINDER, 1" THROW, HIGH STRENGTH SINTERED STAINLESS STEEL WITH CONCEALED HARDENED STEEL ROLLER, EQ. TO #3500/3600 SERIES BY YALE. BORED DEADLATCH LOCKS SHALL COMPLY WITH ANS A156.5.
 - BI-FOLD DOOR HARDWARE SHALL BE 75 LB./PER PANEL, RATED, HEAVY-DUTY TRACK AND HARDWARE SET, MIN. 0.075" ALUM. TRACK, 0.062" ALUM. BOTTOM GUIDE, EQ. TO #9870 BY HAGAR HINGE CO.
 - POCKET DOOR HARDWARE SHALL BE EQ. TO #200PD HARDWARE KIT BY L.E. JOHNSON PRODUCTS, INC. PROVIDING 300 LB. PANEL LOAD. KIT SHALL INCLUDE I-BEAM HEAD TRACK, DOOR HANGERS & PLATES, GUIDES, ROLLERS, & STOPS. PROVIDE #1534 "SUNCREST" FLUSH-MOUNT PRIVACY LOCKSET & DUMMY PULL KIT.
 - ALL HARDWARE SHALL RECEIVE US320 FINISH FOR STAINLESS STEEL AND US260 SATIN CHROME FINISH FOR ALL OTHER EXPOSED METALS COMPONENTS.
 - DOORS SHALL COMPLY WITH SECTION 2-4.4.0 OF NFPA 80; AND SECTIONS 7.2.1.4, 7.2.1.5, 7.2.1.6, & 7.2.1.7 OF NFPA 101 FOR SWING AND FORCE TO OPEN AND LOCKSETS - OPERABLE READILY FROM THE EGRESS SIDE AT ALL TIMES.

HARDWARE SETS

- HS-1 BY DOOR MFR. TO INCLUDE: (EXISTING)
- 3 - BB BUTTS
 - 1 - NIGHTLATCH CYLINDER (ANSI #E1222 FUNCTION)
 - 1 - CLOSER w/COVER
 - 1 - PUSH
 - 1 - PULL
 - 1 - THRESHOLD
 - 1 - WEATHERSTRIP
 - 1 - SWEEP
- HS-2 3 - BB BUTTS x US320
- 1 - LOCKSET x US320 (ANSI #F-81/82 OFFICE FUNCTION)
 - 1 - STOP x US320
- HS-3 3 - BB BUTTS x US320
- 1 - LOCKSET x US320 (ANSI #F-76 PRIVACY FUNCTION)
 - 1 - CLOSER w/ COVER x US320
 - 1 - STOP x US320
- HS-4 3 - BB BUTTS x US320
- 1 - LOCKSET x US320 (ANSI #F-81/82 ENTRANCE FUNCTION)
 - 1 - NIGHTLATCH DEADBOLT (ANSI #E1222 FUNCTION)
 - 1 - CLOSER w/ COVER x US320
 - 1 - STOP x US320
- HS-5 3 - BB BUTTS x US320
- 1 - LOCKSET x US320 (ANSI #F-75 PASSAGE FUNCTION)
 - 1 - STOP x US320
- HS-6 3 - BB BUTTS x US320
- 1 - LOCKSET x US320 (ANSI #F-86 STORE ROOM FUNCTION)
 - 1 - STOP x US320
- HS-7 6 - BB BUTTS x US320
- 1 - LOCKSET x US320 (ANSI #F-81/82 ENTRANCE FUNCTION)
 - 1 - NIGHTLATCH DEADBOLT (ANSI #E1222 FUNCTION)
 - 1 - DUMMY TRIM x US320 w/ DOOR CODE STRIKE
 - 1 - HEAD/FOOT BOLT KIT x US320
 - 2 - CLOSER w/ COVER x US320
 - 2 - STOP x US320
- HS-8 6 - BB BUTTS x US320
- 1 - LOCKSET x US320 (ANSI #F-81/82 OFFICE FUNCTION)
 - 1 - DUMMY TRIM & STRIKE x US320
 - 1 - HEAD & FOOT BOLT SET x US320
 - 2 - STOP x US320 AS REQ'D.
- HS-9 BI-FOLD DOOR KIT



PROJECT DATA

BUILDING CODE:	INT'L. BLDG. CODE 2000
CONSTRUCTION TYPE:	V-B (I.B.C. 2000)/V-000 (NFPA 220)
BUILDING USE GROUPS:	B - BUSINESS
BUILDING AREAS:	(TENANT NET LEASING AREA)
TENANT AREA NO. 1	1,711.36 SQ. FT.
TENANT AREA NO. 2	1,166.98 SQ. FT.
TENANT AREA NO. 3	1,636.94 SQ. FT.
TENANT AREA NO. 4	1,269.90 SQ. FT.
TENANT AREA NO. 5	4,622.27 SQ. FT.
TENANT AREA NO. 6	N/A
TENANT AREA NO. 7	N/A
TENANT AREA NO. 8	1,605.17 SQ. FT.
AUTOMATIC SPRINKLER:	NFPA 13, WET SYSTEM

