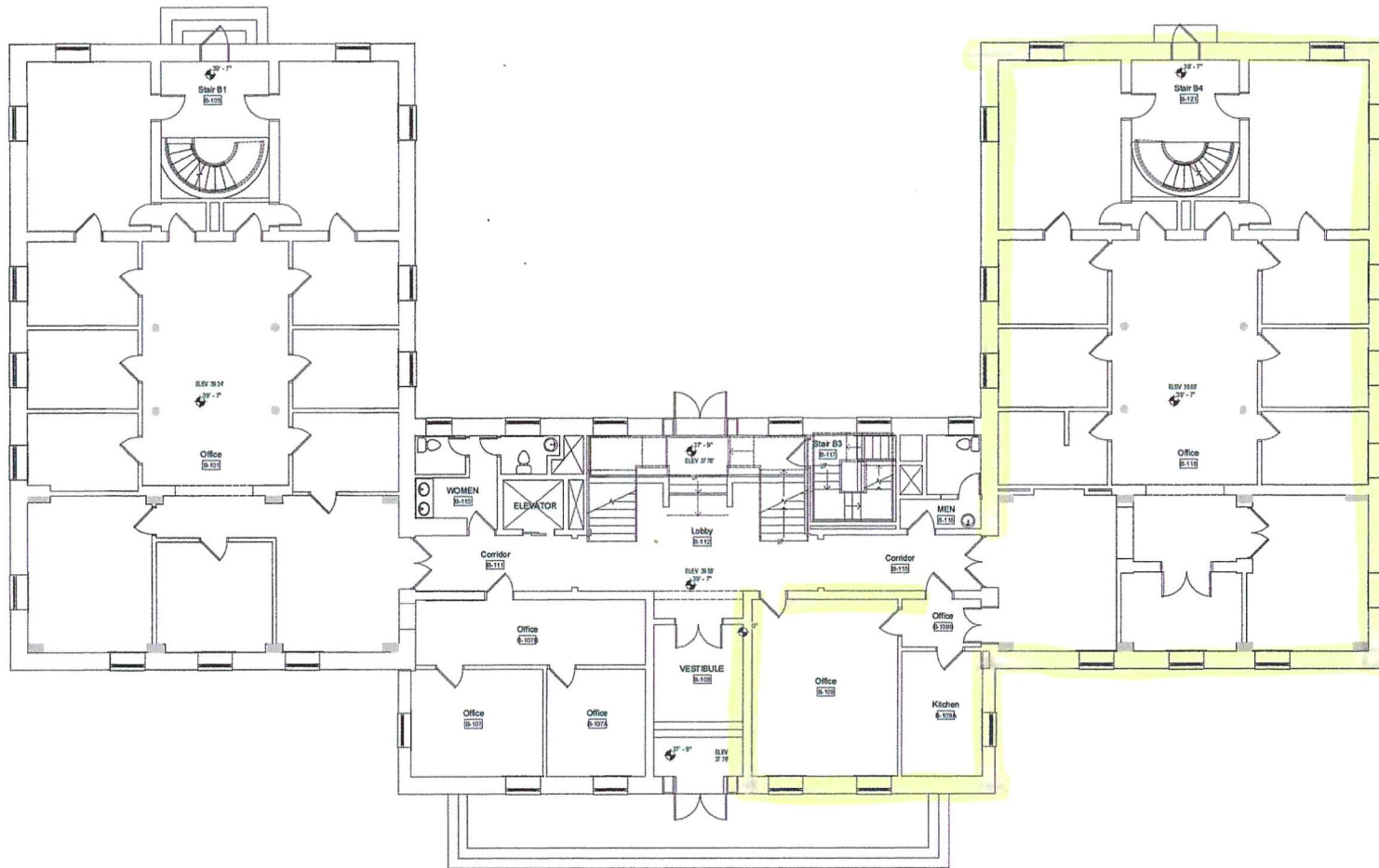
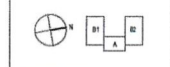


**BULFINCH SQUARE**

47 Thordike Street



- GENERAL NOTES**
- NOTES ABOUT DIMENSIONS**
- Dimensions to center partitions unless framed floor or concrete conditions are indicated or specified for floor (eg. 1/2" to face of 1/2" thick slab, etc., where indicated or otherwise)
  - Clear dimensions indicate a minimum clear dimension unless otherwise indicated
  - Dimensions at masonry elements are the (permanent) dimensions
  - Clear joint between floor slabs with an isolated 4" floor return wall (RFD)
  - Dimensions between pipes are to center to masonry opening (MGO)
  - Center-to-Center (C-C) and to bottom of
  - Dimensions in the field and width of any impinged condition (to dimension shown)
  - Partitions shown on these drawings are to be constructed per applicable building code (IBC)
  - Partitions shown on these drawings are to be constructed per applicable building code (IBC)
  - Partitions shown on these drawings are to be constructed per applicable building code (IBC)
- NOTES ON CONSTRUCTION**
- All floor partitions are types of Gypsum board (GWB) and type wall (GWB) (IBC)
  - When the floor partitions are indicated to be elevated, they shall be in the same accordance with the applicable floor construction (IBC)
  - See code department for details of fire and smoke rated partitions
  - When a partition type is called out for one side only of a wall, the same shall apply to all sides
  - Doors shown on these drawings are to be in accordance with applicable building code



CONSTRUCTION INC.

**GUNDPARTNERSHIP**

ARCHITECTURE | PLANNING  
47 THORNDIKE STREET  
CAMBRIDGE, MA 02141  
617 231-8300  
617 777-9514 FAX

CONSULTANT

REVISION	DATE	DESCRIPTION	DATE
REVISED 1			

**PRICING DWO**

DATE: 5 APRIL 2023  
SCALE: As Indicated  
DRAWN BY: Author  
CHECKED BY: Checker

BEST TITLE: LEVEL 1 PLAN OVERALL

PROJECT NUMBER:  
**A01.11**

© 2023 GunDP Partnership, Inc. All rights reserved. No part of this document may be reproduced without written permission from GunDP Partnership, Inc.

1 Level 1 Plan Overall  
3/27/23