

Our sublease opportunity awaits, offering a distinctive blend of modern comfort and urban convenience. Explore the unparalleled lifestyle that comes with calling this address home, where a thriving community meets the perfect balance between work and play.

- » Plug & Play Office Space
- » 5,481 SF
- » LEX: August 31, 2027
- » Available Now
- » Pricing: \$3.50 IG

CBRE

**PUBLIC
MARKET**

60005

**SHHELLMOUND
ST.**

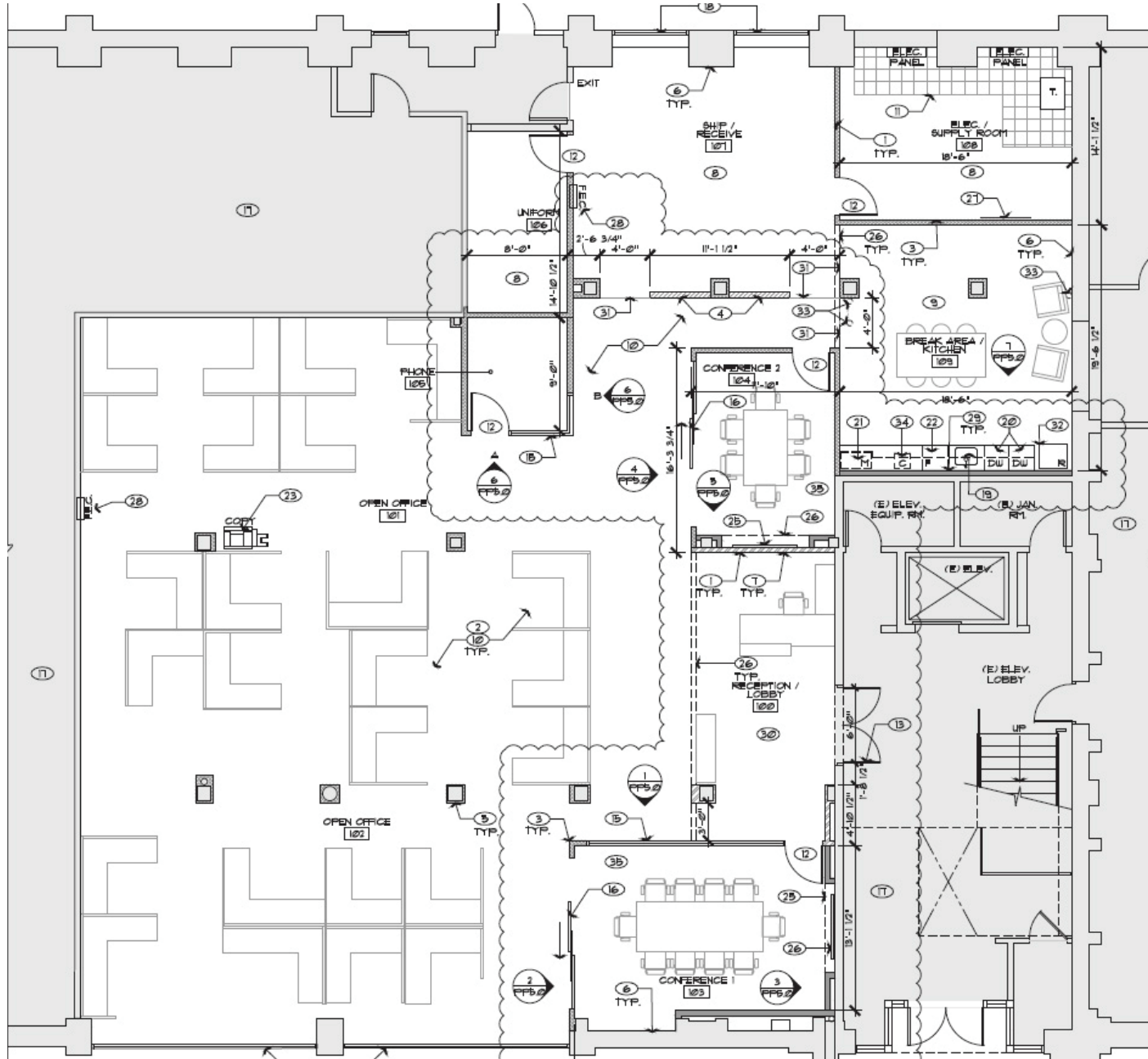
EMERYVILLE . CA



FLOOR PLAN

5,481 SF

- » Partial Ground Floor
- » High Ceilings
- » Break Room / Kitchen
- » 2 Conference Rooms
- » 1 Private Office / Huddle Room
- » Storage / Electrical Room
- » 20+ Existing Workstations



EMERYVILLE AMENITY MAP

- » Located in the Heart of Emeryville's Public Market
- » On-Site and Surrounding Retail Amenities
- » Convenient Parking located Nearby
- » Access to Freeways, BART, Amtrak

RESTAURANTS

Logos for Subway, Jasmine Blossom Thai Cuisine, Starbucks, and Los Move's.

PUBLIC MARKET

Logos for Peets Coffee & Tea, Orangetheory Fitness, and Guitar Center.

FOOD COURT: 15+ EATERIES

PUBLIC MARKET

Logos for Trader Joe's, Corepower Yoga, Ross Dress for Less, Starbucks, Mattress Firm, Pier 1 Imports, Super Duper, and BevMo!.



RESTAURANTS

Logos for Best Coast Brewpubs, Ike's Place, The Broken Rack, Honor, and The Bureau.

BAY STREET

Logos for H&M, Bath & Body Works, Old Navy, Vans, Sunglass Hut, Macys, West Elm, Sephora, Marshalls, Ikea, Uniqlo, AMC Theatres, and Barnes & Noble.

EAST BAY BRIDGE CENTER

Logos for Target, Nordstrom Rack, Best Buy, The Home Depot, Ulta Beauty, Starbucks, and PaknSave.



6005 SHELLMOUND ST.

EMERYVILLE . CA

DANIEL BISABRI

SENIOR VICE PRESIDENT

LIC. 01754122

T 510 874 1901 | C 925 639 1004

DANIEL.BISABRI@CBRE.COM

LIAM FARRELL

ASSOCIATE

LIC. 02207523

T 510 874 1942 | C 360 949 3140

LIAM.FARRELL1@CBRE.COM

1111 BROADWAY, SUITE 1850

OAKLAND, CA 94607

© 2023 CBRE, Inc. All rights reserved. This information has been obtained from sources believed reliable, but has not been verified for accuracy or completeness. You should conduct a careful, independent investigation of the property and verify all information. Any reliance on this information is solely at your own risk. CBRE and the CBRE logo are service marks of CBRE, Inc. All other marks displayed on this document are the property of their respective owners, and the use of such logos does not imply any affiliation with or endorsement of CBRE. Photos herein are the property of their respective owners. Use of these images without the express written consent of the owner is prohibited.PMStudio_March2024

CBRE