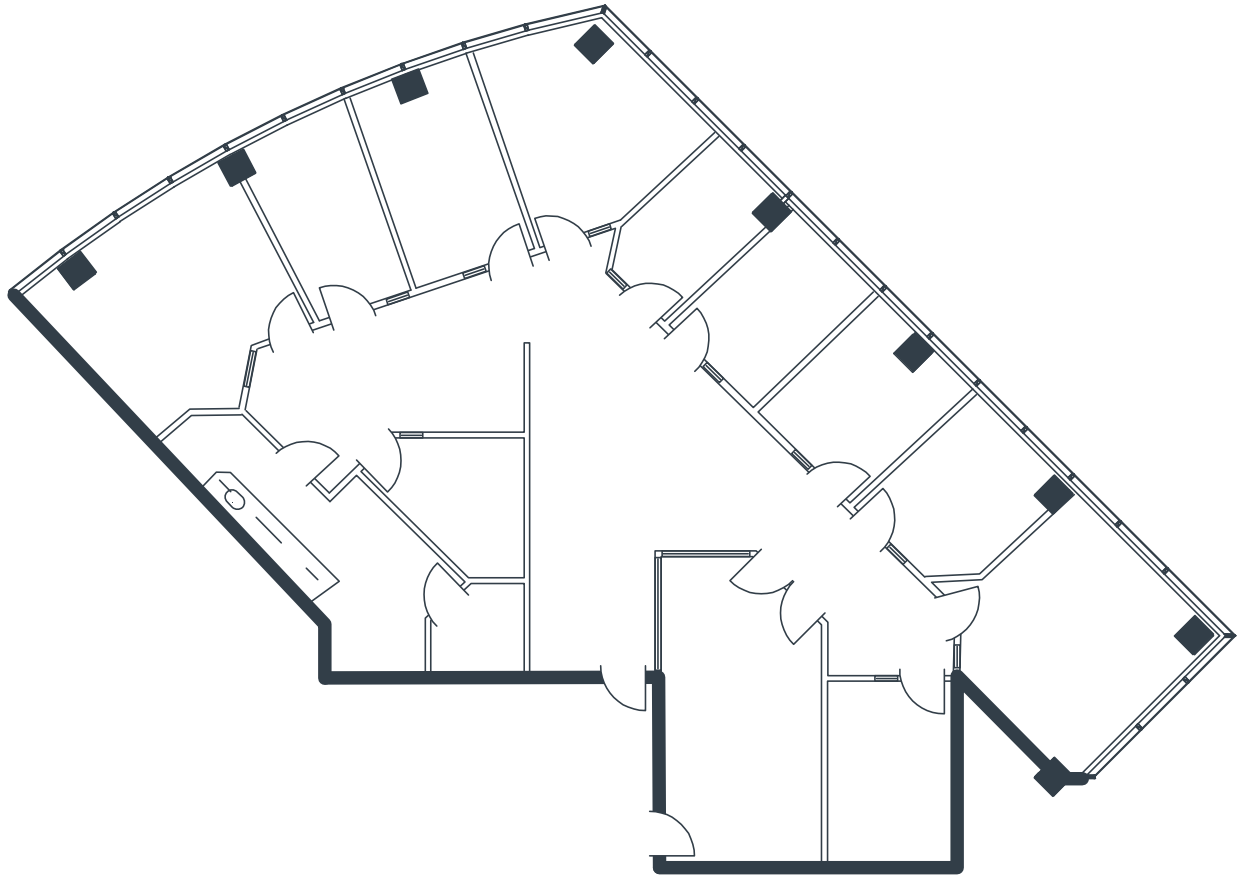


CENTURY CENTRE

2601 Main Street, Suite 530
Irvine, CA

3,514 Square Feet
Call for Pricing
Full Service Gross



NOTES

- Reception
- 9 Window Offices
- Interior Office
- Conference Room
- Kitchen
- Server Room
- Storage Room
- Part of a Professionally Managed Business Park

Created by Olen Commercial Realty Corp., 2022.
Information is not to be published or copied without
written approval. Square footage and floor plans are
estimates and should be separately verified. All rates,
terms, floor plans, and building facts are subject to
change without notice.

ea 06.03.2025

MARIA MEYER
Senior Leasing Director
949.719.7215
mmeyer@olen.com



Seven Corporate Plaza
Newport Beach, CA
949.644.6536
www.olen.com