

For Lease



730 Glen Drive

Vancouver, BC | 1,619 SF of Creative Industrial Space in Assembly Strathcona



Contact

Jordan Coulter

Associate Vice President
Advisory & Transaction Services
jordan.coulter@cbre.com
604 662 5574

Ed Ferreira

Personal Real Estate Corporation
Senior Vice President
Advisory & Transaction Services
ed.ferreira@cbre.com
604 662 5122

Darren Starek

Senior Vice President
Advisory & Transaction Services
darren.starek@cbre.com
604 662 5175

For Lease

730 Glen Drive
Vancouver, BC



Property Details



Address

730 Glen Drive, Vancouver



Available Area

| | |
|--------------|-----------------|
| Ground Floor | 1,256 SF |
| Mezzanine | 363 SF |
| Total | 1,619 SF |



Availability

Immediately



Basic Rent

\$30.00 per SF



Additional Rent

\$12.00 per SF (2024 est.)



Zoning

CD-1 (772)

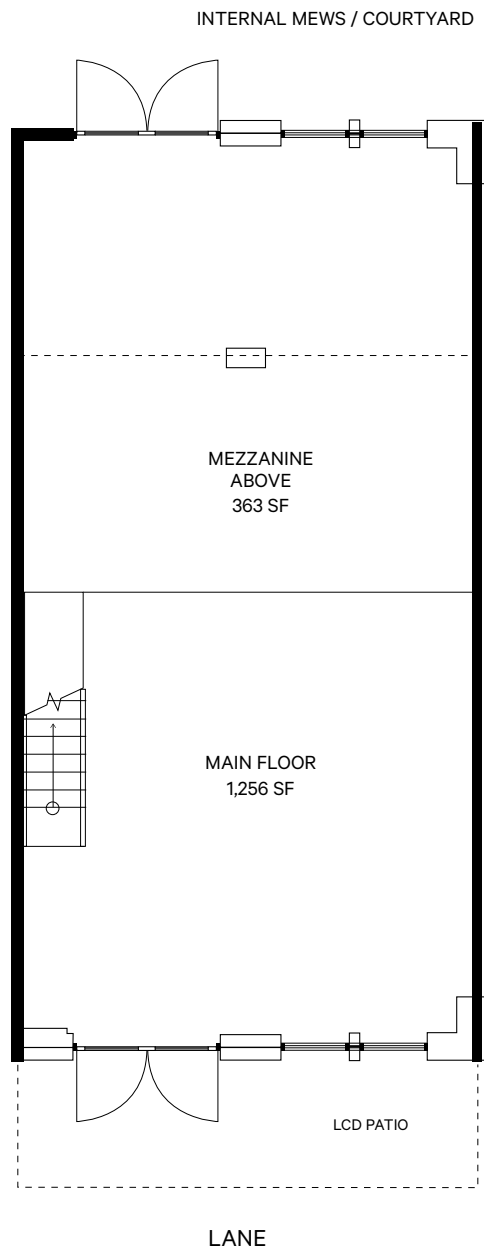
Lease a unique 1,619 SF ground floor unit in Assembly, Strathcona's newest boutique mixed use development.



Property Features

- + Contemporary Bauhaus - Inspired Design
- + Dual fronting unit with exposure to internal mews/courtyard
- + High ceilings
- + Oversized double pane windows
- + Reserved underground parking
- + Shared grade loading at lane
- + End of trip facilities and gym

Floor Plan



*not to scale

For Lease



730 Glen Drive
Vancouver, BC

Assembly is located in the burgeoning area of Strathcona, one of Vancouver's oldest and unique neighborhoods with a deep history in industry and creativity. Assembly is the prototype for the ultimate live work lifestyle, minutes from downtown Vancouver but far enough away to appreciate the fabric of an authentic neighborhood.

Specifically, the property is located North of Adanac Street and East of Glen Drive offering close proximity to the bustling Port of Vancouver, the Trans-Canada Highway, and other major amenities.



Prime
Location

5
MINS

TO DOWNTOWN
VANCOUVER

8
MINS

TO HIGHWAY 1

15
MINS

TO NORTH SHORE

5
MINS

TO NEW ST. PAUL'S
HOSPITAL

Contact

Jordan Coulter

Associate Vice President
jordan.coulter@cbre.com
604 662 5574

Ed Ferreira

Personal Real Estate Corporation
Senior Vice President
ed.ferreira@cbre.com
604 662 5122

Darren Starek

Senior Vice President
darren.starek@cbre.com
604 662 5175

This disclaimer shall apply to CBRE Limited, Real Estate Brokerage, and to all other divisions of the Corporation; to include all employees and independent contractors ("CBRE"). The information set out herein, including, without limitation, any projections, images, opinions, assumptions and estimates obtained from third parties (the "Information") has not been verified by CBRE, and CBRE does not represent, warrant or guarantee the accuracy, correctness and completeness of the Information. CBRE does not accept or assume any responsibility or liability, direct or consequential, for the Information or the recipient's reliance upon the Information. The recipient of the Information should take such steps as the recipient may deem necessary to verify the Information prior to placing any reliance upon the Information. The Information may change and any property described in the Information may be withdrawn from the market at any time without notice or obligation to the recipient from CBRE. CBRE and the CBRE logo are the service marks of CBRE Limited and/or its affiliated or related companies in other countries. All other marks displayed on this document are the property of their respective owners. All Rights Reserved.

Mapping Sources: Canadian Mapping Services canadamapping@cbre.com; DMTI Spatial, Environics Analytics, Microsoft Bing, Google Earth.