

Compton

City Core
Cannon Green Building
EC4R 0AN

Impressive fully fitted out workspace with communal roof terrace and business lounge located a stones throw from Cannon Street station

For Rent
6,325 ft²

020 7101 2020
compton.london



Compton

City Core

Cannon Green Building
EC4R 0AN

Impressive fully fitted out workspace with communal roof terrace and business lounge located a stones throw from Cannon Street station

For Rent

6,325 ft²



Location

Cannon Green is located next door to Cannon Street station in the heart of the City of London.

The new entrance to Bank Station is just 2 minutes' walk away. London Bridge and Liverpool Street are also within easy reach.

The building is surrounded by an excellent choice of dining and retail options with Bloomberg Arcade, Bow Lane and One New Change all within a short walk.

Compton

City Core

Cannon Green Building
EC4R 0AN

Impressive fully fitted out workspace with communal roof terrace and business lounge located a stones throw from Cannon Street station

For Rent

6,325 ft²



Building exterior

Compton

City Core

Cannon Green Building
EC4R 0AN

Impressive fully fitted out workspace with communal roof terrace and business lounge located a stones throw from Cannon Street station

For Rent
6,325 ft²



Compton

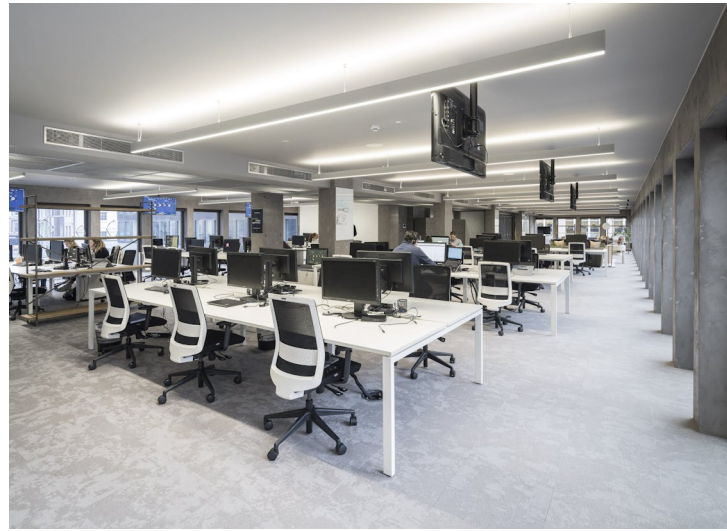
City Core

Cannon Green Building
EC4R 0AN

Impressive fully fitted out workspace with communal roof terrace and business lounge located a stones throw from Cannon Street station

For Rent

6,325 ft²

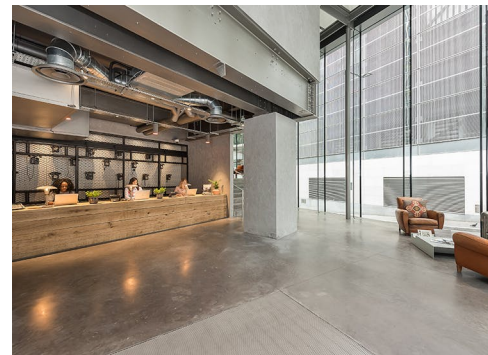
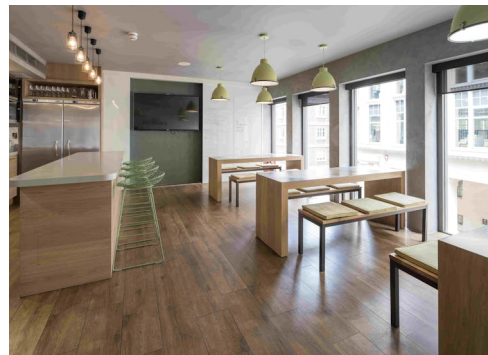
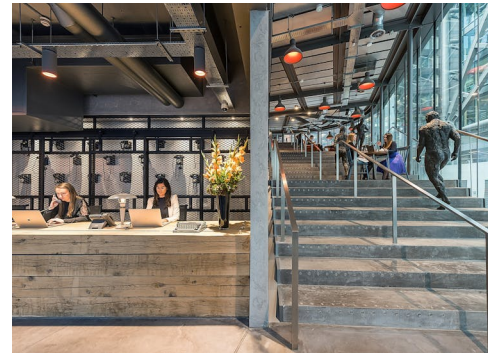


Compton

City Core
Canon Green Building
EC4R 0AN

Impressive fully fitted out workspace with communal roof terrace and business lounge located a stones throw from Cannon Street station

For Rent
6,325 ft²



Compton

City Core

Cannon Green Building
EC4R 0AN

Impressive fully fitted out workspace with communal roof terrace and business lounge located a stones throw from Cannon Street station

For Rent

6,325 ft²

Amenities

- Quoting £55.00 per sq ft on a Sub-lease basis (rent passing £70 per sq ft)
- Fully fitted & furnished
- Communal roof terrace
- Business Lounge
- Sub-lease or assignment until June 2027 (outside the Act)
- Can be offered on a managed basis - additional £17.41psf
- Exposed concrete finishes
- Kitchenette
- Multiple meeting rooms
- Building commissionaire

Description

This impressive workspace, located within a vibrant and creative building, is offered by way of sublease or assignment until June 2027. Alternatively, a surrender and regrant can be arranged directly with the Landlord.

The space is fully outfitted to support over 70 workstations and includes a modern kitchen, private phone booths, and multiple meeting rooms. Tenants also enjoy access to an array of outstanding amenities, including a communal rooftop terrace with sweeping views, a chic business lounge, and an on-site restaurant and bar. With secure cycle-in storage and showers, this workspace offers a seamless blend of productivity and lifestyle in a prime location.

Compton

City Core

Cannon Green Building
EC4R 0AN

Impressive fully fitted out workspace with communal roof terrace and business lounge located a stones throw from Cannon Street station

For Rent

6,325 ft²

Content

View on Website



Terms

Sub-lease or assignment until June 2027 (outside the Act).

Compton

City Core

Cannon Green Building
EC4R 0AN

Impressive fully fitted out workspace with communal roof terrace and business lounge located a stones throw from Cannon Street station

For Rent

6,325 ft²

Floor Areas & Outgoings

The accommodation comprises the following areas:

Name	sq ft	Rent (sq ft)	Rates Payable (sq ft)	Service Charge (sq ft)	Total /sq ft	Total month	Total year	Availability
Unit - Part 2nd Floor	6,325	£55	£22.25	£11.92	£89.17	£47,000.02	£564,000.25	Available
Total	6,325	£55	£22.25	£11.92	£89.17	£47,000.02	£564,000.25	

Compton

Contact Us

All appointments to view must be arranged via sole agents, Compton, through —

Emma Higgins
eh@compton.london
07769 605 295

Shaun Simons
ss@compton.london
07788 423131

Josh Perlmutter
jp@compton.london
07814 699 096

