
MAIN STREET BUSINESS CENTER

FOR SUBLEASE: ±2,920 SF INDUSTRIAL WAREHOUSE

24418 S. MAIN ST., SUITE 412, CARSON, CA



NEWMARK

ZACHARY CAINE

Associate Director
t 310-491-2089
zachary.caine@nmrk.com
CA RE Lic. #02062263

GEOFF LUDWIG

Exec. Managing Director
t 310-491-2077
geoff.ludwig@nmrk.com
CA RE Lic. #01232244

ERIC LASTITION

Exec. Managing Director
t 310-491-2047
eric.lastition@nmrk.com
CA RE Lic. #01119647

24418 S. MAIN ST., SUITE 412, CARSON, CA



Minutes to the Ports of LA/ Long Beach and convenient to LAX- ideal for import/export and regional distribution



Well-maintained business park within the Main Street Business Center that delivers a strong curb appeal and corporate image



Access to a deep, skilled labor pool from the South Bay with proximity to California State University, Dominguez Hills



Prime South Bay location with quick connectivity to I-405, I-110, and SR-91 for efficient access across Greater Los Angeles



Located near abundant amenities - restaurant, retail, fitness, and services - at SouthBay Pavilion, Carson Town Center, and IKEA



Established logistics and industrial corridor in a business-friendly city with strong tenant demand and reputable corporate neighbors



24418 S. MAIN ST., SUITE 412, CARSON, CA

PROPERTY DETAILS

RENTABLE SQUARE FEET

±2,920 RSF (270 SF Office)

SUBLEASE TERM

Through October 31, 2027

SUBLEASE RENTAL RATE

\$1.50 per RSF, Modified Gross

WAREHOUSE CLEAR HEIGHT

±17'

GROUND LEVEL LOADING DOOR

1- 10' x 12'

RESTROOM

One

YEAR BUILT

1985

MAIN POWER

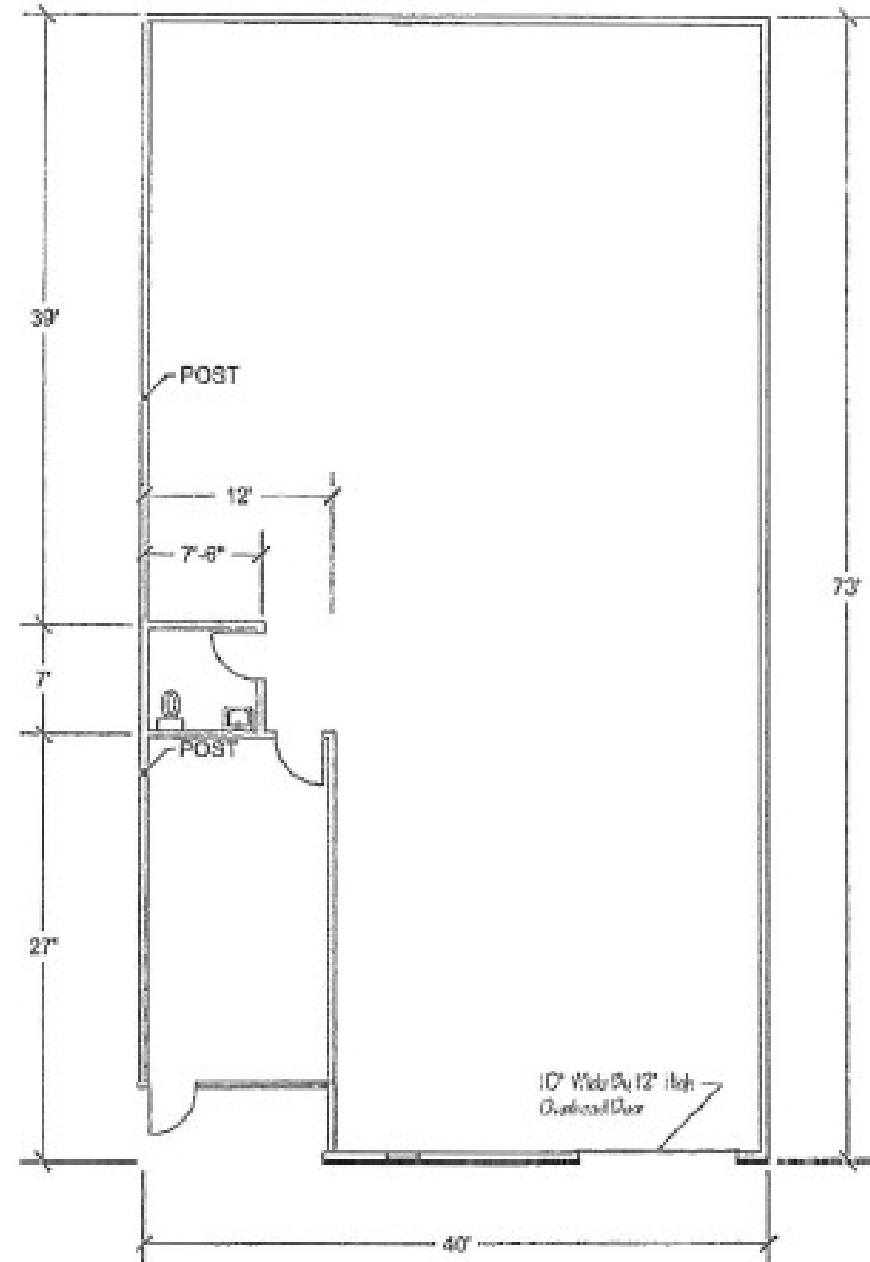
200 AMPS, 120/208 VOLTS, 3 PHASE

PARKING RATIO

1.5/1,000

ZONING

ML



24418 S. MAIN ST., SUITE 412, CARSON, CA

INTERIOR PHOTOS

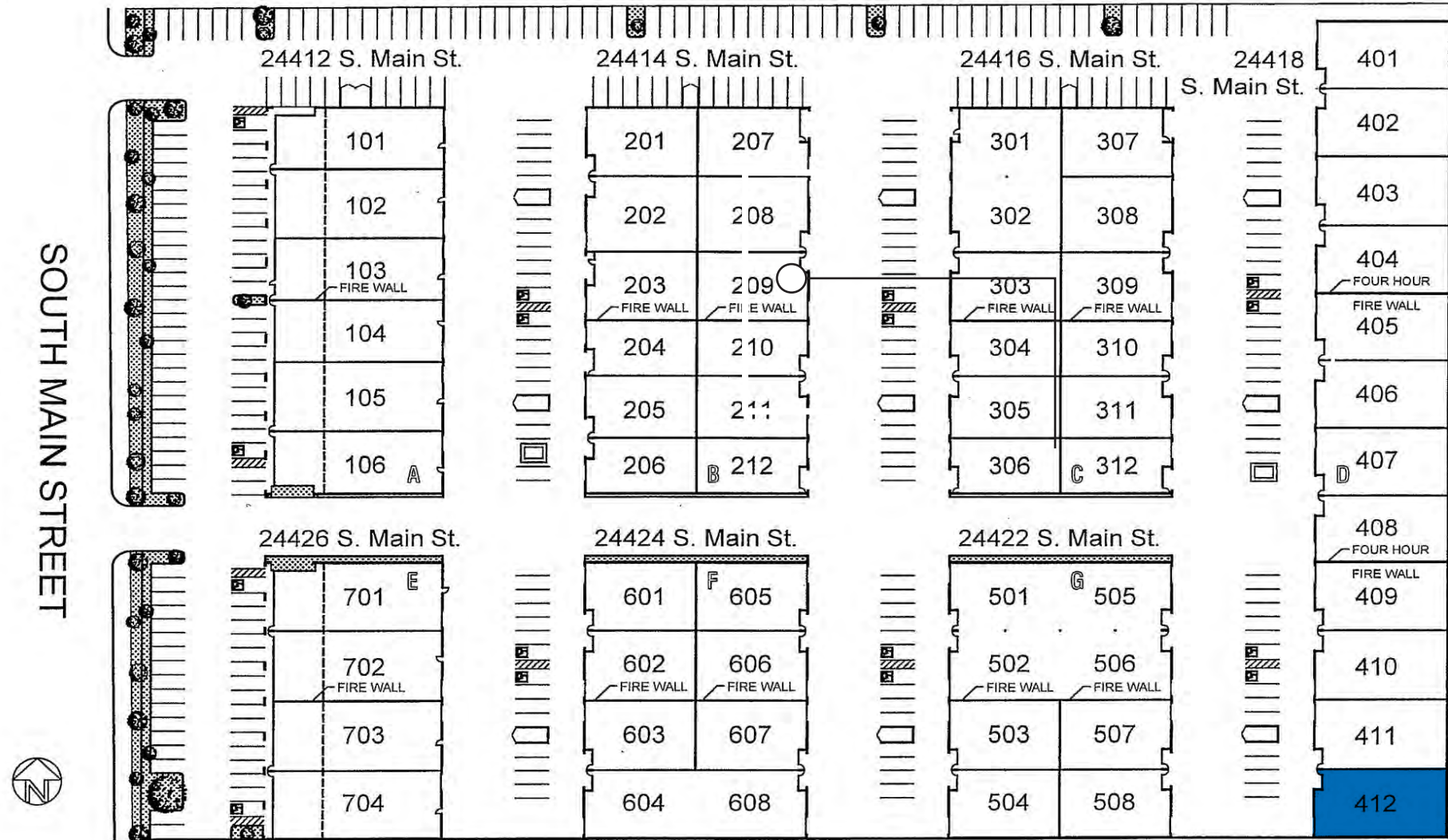


NEWMARK

24418 S. MAIN ST., SUITE 412, CARSON, CA

SITE PLAN

MAIN STREET BUSINESS CENTER

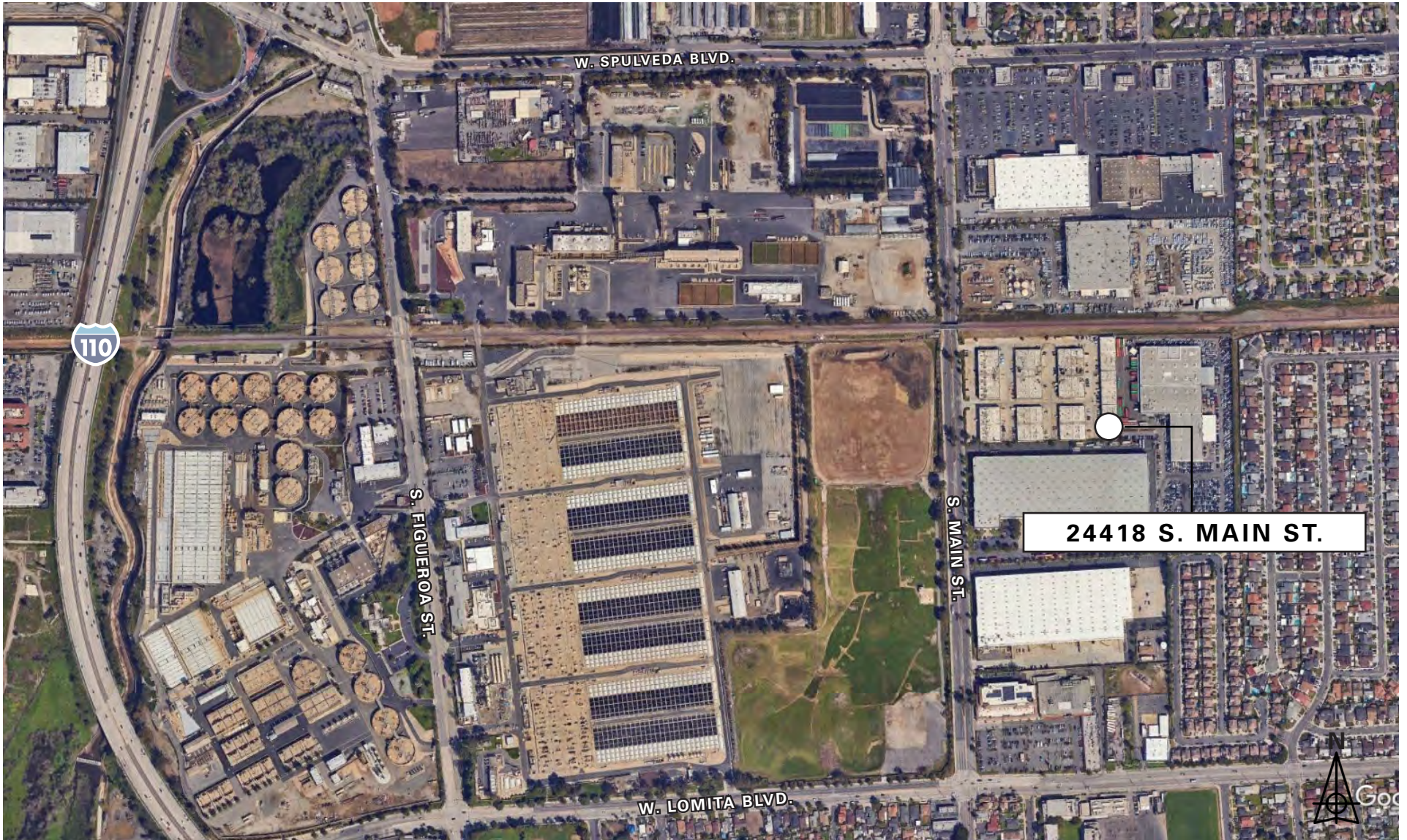


Scale: 1" = 80'

NEWMARK

24418 S. MAIN ST., SUITE 412, CARSON, CA

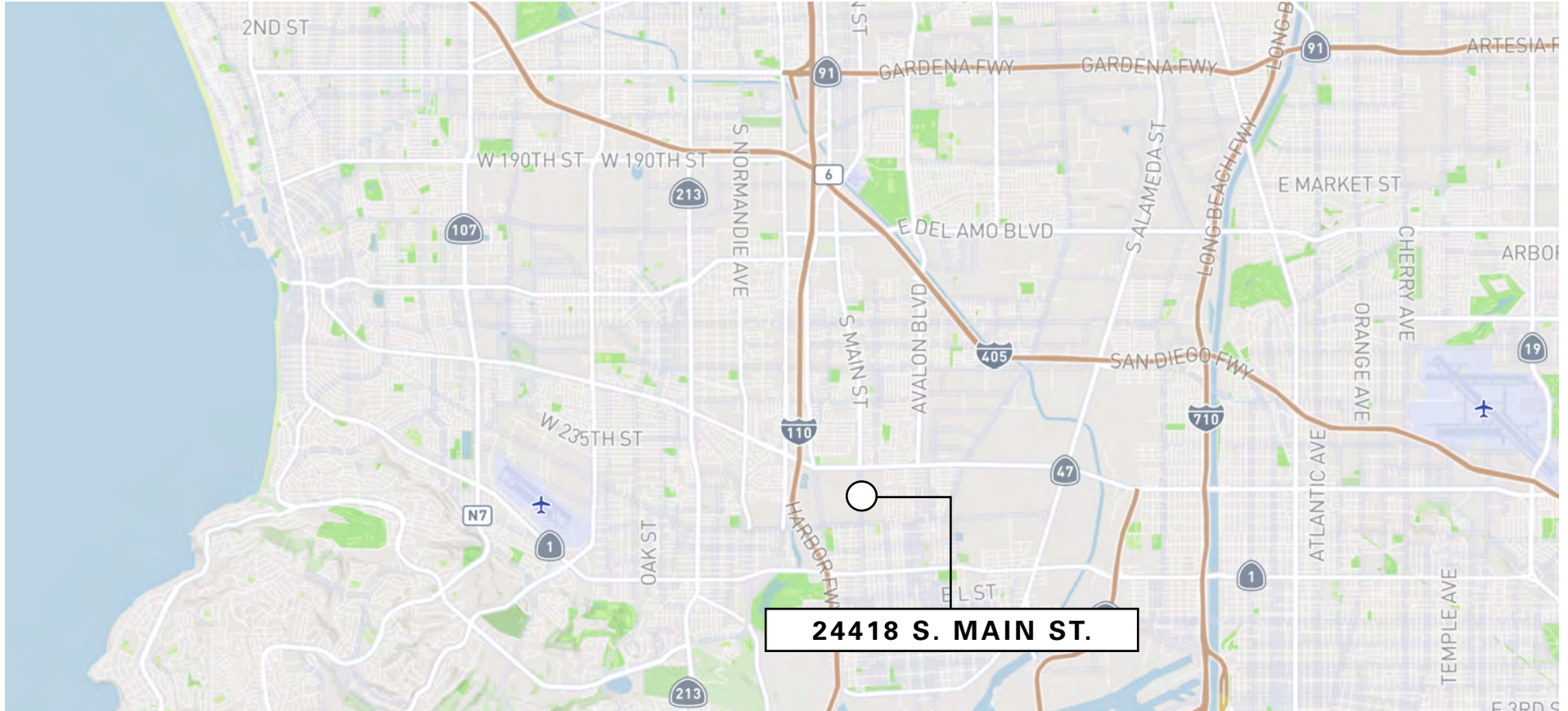
AERIAL VIEW



NEWMARK

24418 S. MAIN ST., SUITE 412, CARSON, CA

LOCATION MAP



FOR MORE INFORMATION:

ZACHARY CAINE

Associate Director
t 310-491-2089
zachary.caine@nmrk.com
CA RE Lic. #02062263

GEOFF LUDWIG

Exec. Managing Director
t 310-491-2077
geoff.ludwig@nmrk.com
CA RE Lic. #01232244

ERIC LASTITION

Exec. Managing Director
t 310-491-2047
eric.lastition@nmrk.com
CA RE Lic. #01119647

Corporate License #01355491

The information contained herein has been obtained from sources deemed reliable but has not been verified and no guarantee, warranty or representation, either express or implied, is made with respect to such information. Terms of sale or lease and availability are subject to change or withdrawal without notice.