

This is *City Tower*

A Fully Managed
workspace where your
people are our priority.

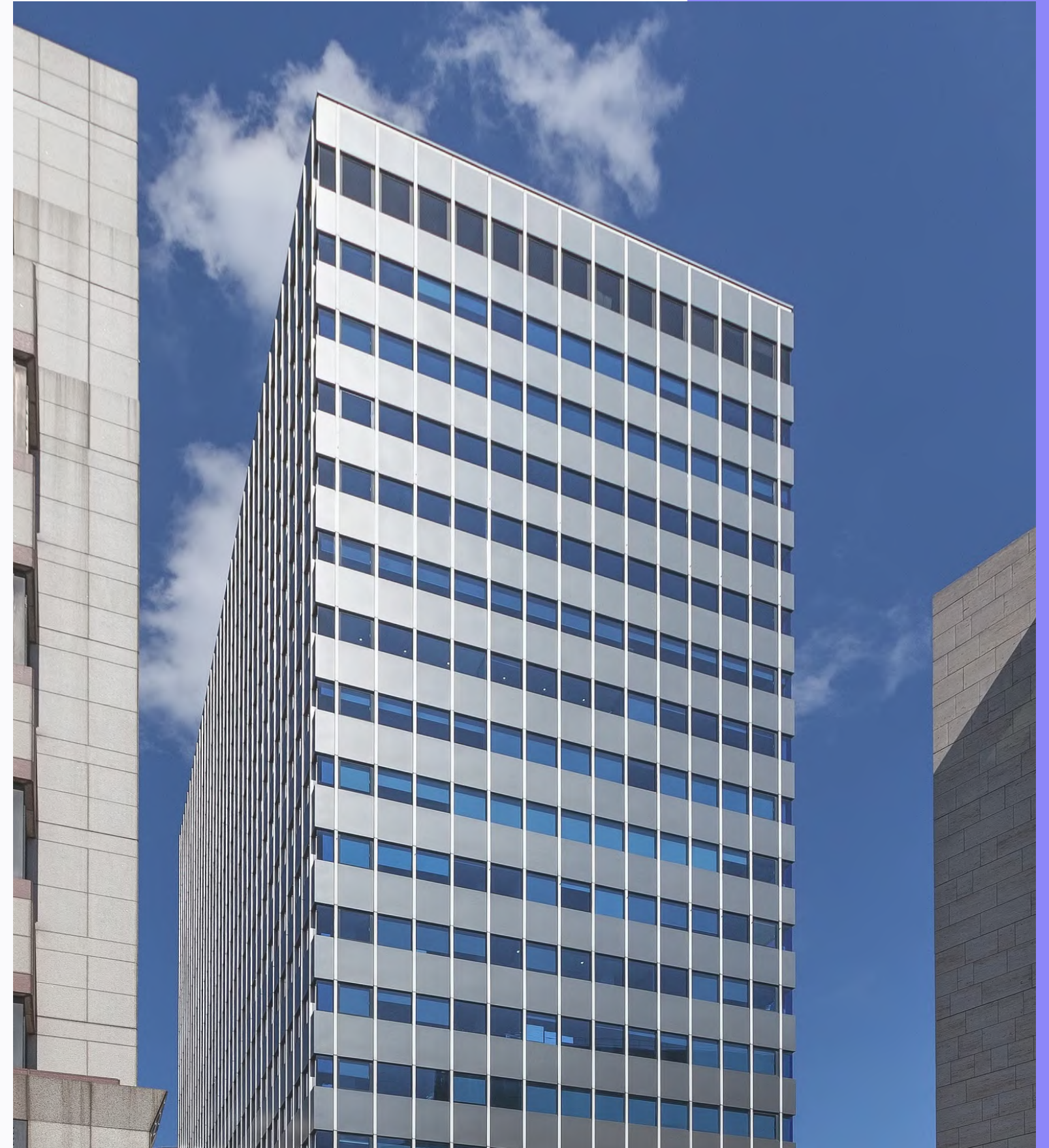
| THE CITY, EC2V

GPE.
Greater together



Contents

- 03 What's in your building >
- 04 Why us >
- 05 Availability schedule >
- 06 Floorplans >
- 09 Location >
- 13 Get in touch >





SHARED LOUNGE



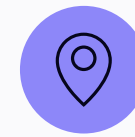
SHARED MEETING ROOM



BREAKOUT AREAS

A workspace that says you've arrived

City Tower sets the standard in contemporary office space. With wonderful amenities throughout and a modern welcome area - complete with a five-metre-high ceiling, uninterrupted city views and a shared lounge - it offers the perfect mix of statement and state-of-the-art workspace for your business.



Prime location

You'll never get tired of the uninterrupted views across London, seen from the heart of the city.



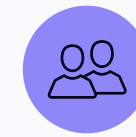
Cycle storage & shower cubicles

Commuters will love our 71 cycle spaces, dedicated entrance, 168 lockers, 9 showers and 2 drying rooms.



A warm welcome

First impressions count and our front of house team ensure a great reception for you and your guests.



Exceptional amenities

Including a communal lounge, breakout areas, coffee machine, meeting spaces and games.



sesame® workplace app

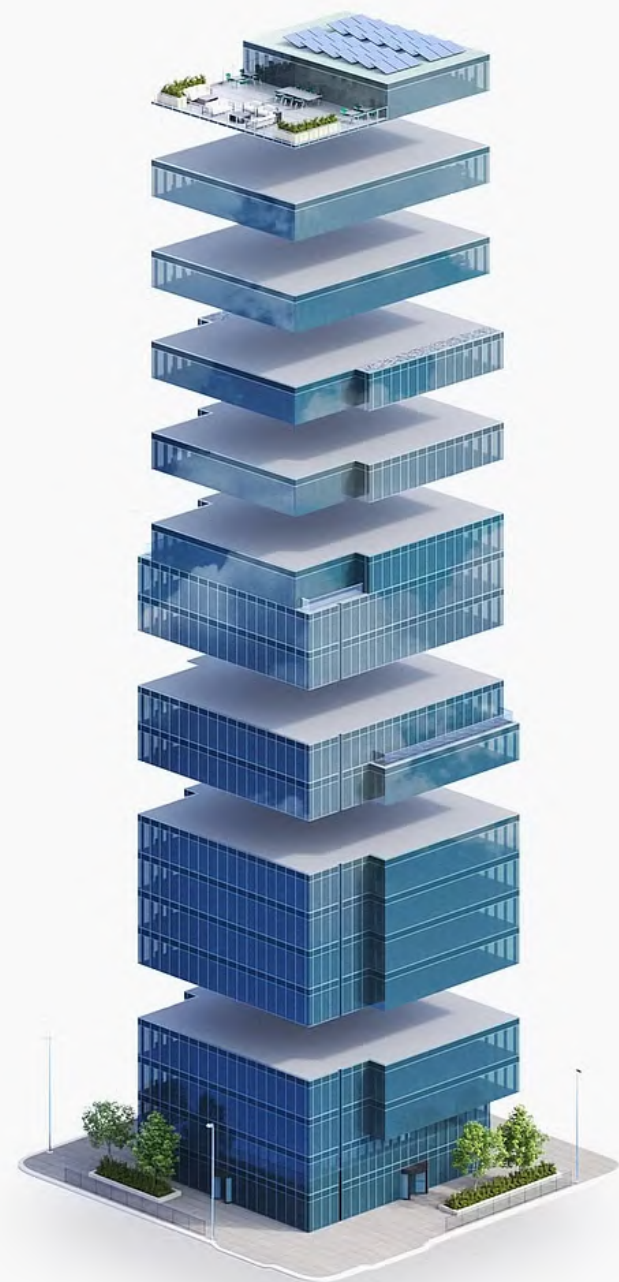
For contactless access, plus other features depending on your needs.



24 hour access and security

We know that business never stops, so you're free to come and go as you please.

It's all included in one bill, no hidden extras



- Events, food and beverages
- Security
- IT connectivity and support
- Utilities
- Cleaning and maintenance
- Fully furnished workspace
- Building service charge
- Business rates
- Rent

6 reasons to choose GPE Fully managed



1 – Fully managed and fully yours

Say hello to a furnished workspace that's exclusively yours. Our Fully Managed service is a truly hassle-free experience.

[How we make it hassle-free](#)



2 – All-in-one bill with no hidden extras

Say goodbye to multiple bills. Each month you'll receive one all-inclusive bill from us, and, your bill remains fixed for your contract period.

[See what's included](#)



3 – Relax, you're in safe hands

We've been doing this for a long time. Our in-house experts curate the perfect experience, so you can enjoy market-leading workspaces. We own and manage our buildings, so you'll always deal directly with us.

[Learn more about us](#)



4 – Plug in and go - your tech's all sorted

You get safe, secure and ultra-fast wireless connectivity so you can work seamlessly from day one, with IT help on-hand. Everyone gets access to sesame™, your award-winning workspace app.

[Head over to the tech](#)



5 – Working towards a better world

As an environmentally-conscious company, we prioritise sustainability and refuse to engage in greenwashing. We're working towards being a net zero carbon business by 2030.

[How we're reducing our impact](#)




6 – Exceptional service as standard

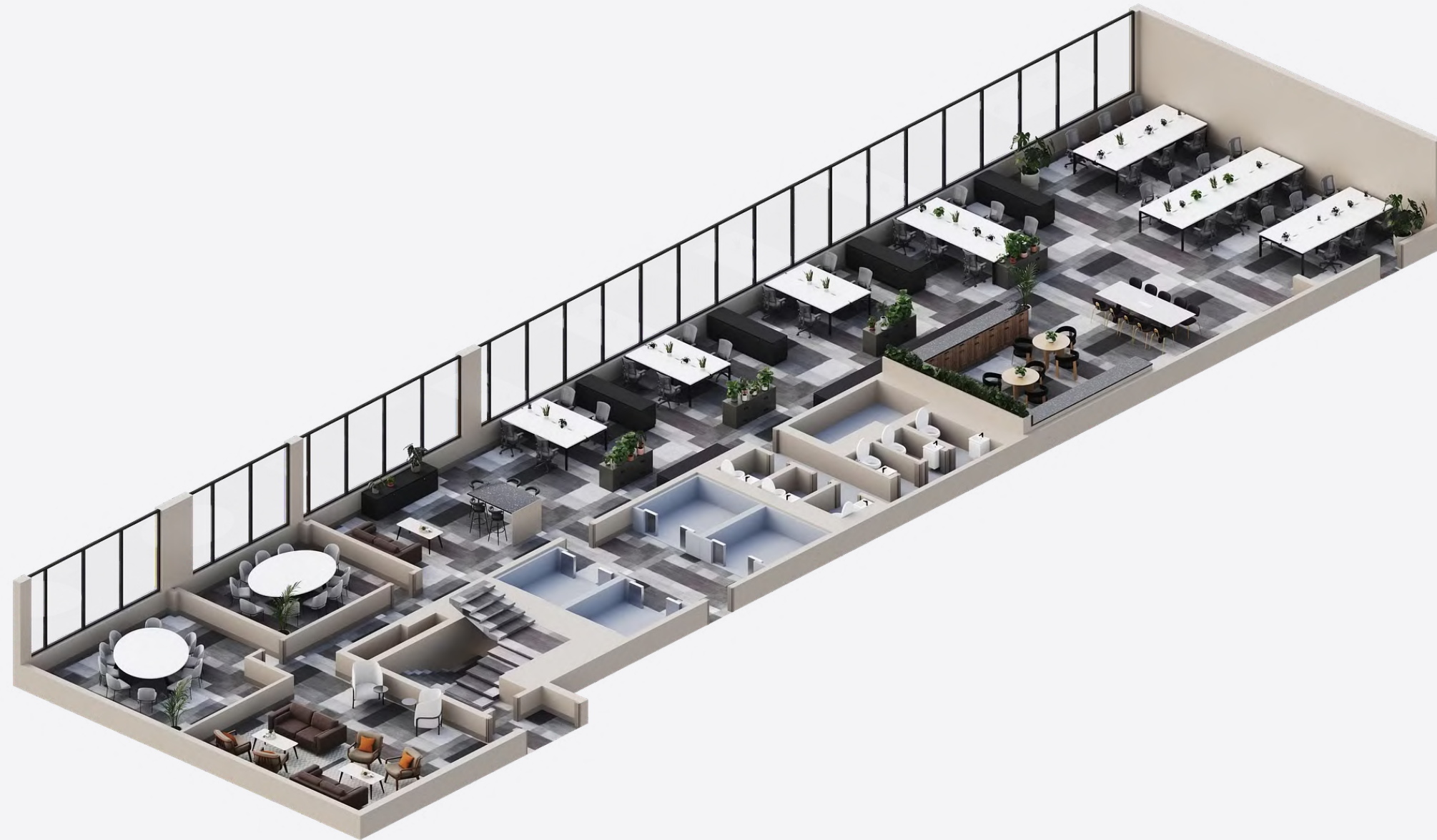
Your people are our priority. It's why we've developed our customer promise - the values by which we operate - so we can deliver you a great experience.

Schedule of areas

Let's get down to the details...

FLOOR	CONFIGURATION	MAX OCCUPANCY	SQFT	FLOORPLAN	FEATURES	AVAILABILITY
18th	32 desks, 2 meeting rooms + breakout areas	59	3,810		Multiple breakout areas and uninterrupted city view	<input checked="" type="checkbox"/> Available

18th Floor West



[View/download 2D Floorplan](#)



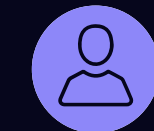
3,810 sq ft



2 meeting rooms



Welcome area



59 max capacity



Breakout areas



Coffee machine



32 current desks



Kitchen



Lockers

18th Floor West

Contents

FLOOR OVERVIEW



YOUR OWN KITCHEN



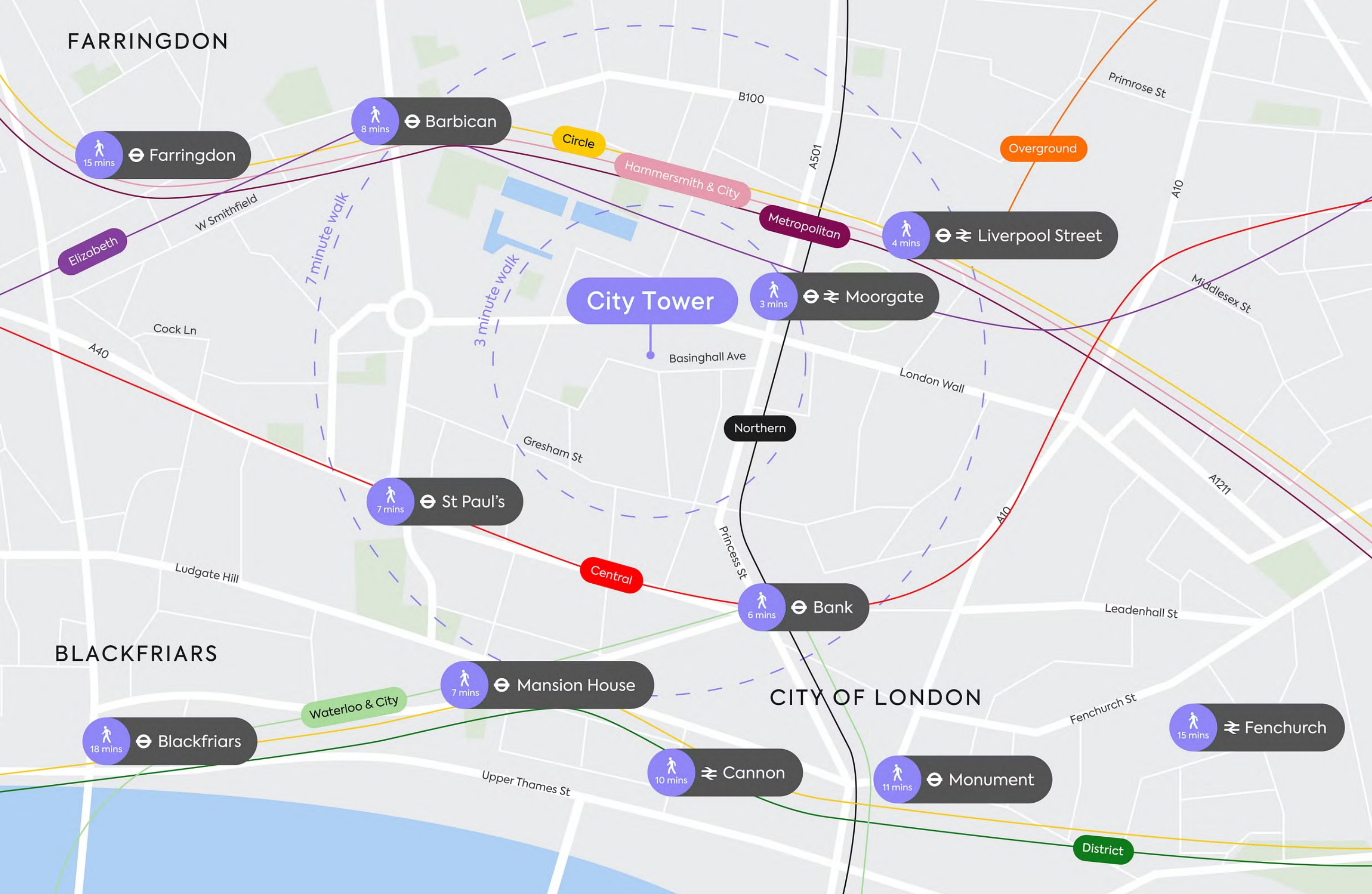
YOUR OWN DESK SPACE



YOUR OWN MEETING ROOMS



YOUR OWN BREAKOUT AREAS



NEAREST STATIONS

- Moorgate**
3 mins
● (Northern line)
- Liverpool Street**
4 mins
● (Circle line) ● (Metropolitan line) ● (Hammersmith & City line) ● (Overground)
- Bank**
6 mins
● (Central line) ● (Northern line) ● (Elizabeth line)
- St Pauls**
7 mins
● (Central line)
- Mansion House**
7 mins
● (Waterloo & City line) ● (Elizabeth line)
- Barbican**
8 mins
● (Circle line) ● (Elizabeth line)

Consider yourself right in the heart of the city, with six underground stations within walking distance - the nearest being Moorgate just 3 minutes away - and easy access to the new Elizabeth line at Liverpool Street station.



SEE



MADISON ROOFTOP



TASTE



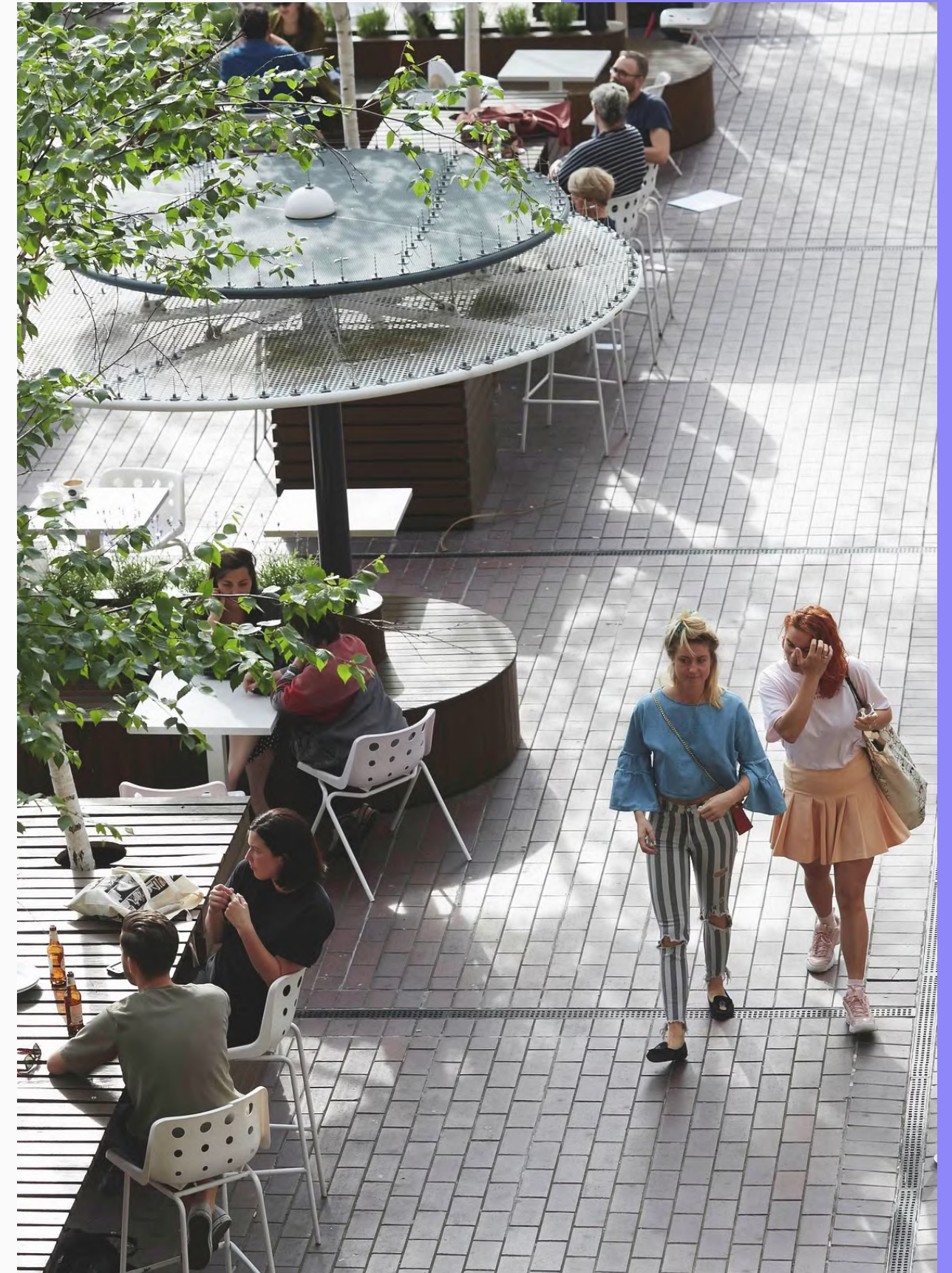
GORDAN RAMSEY STREET PIZZA



RELAX



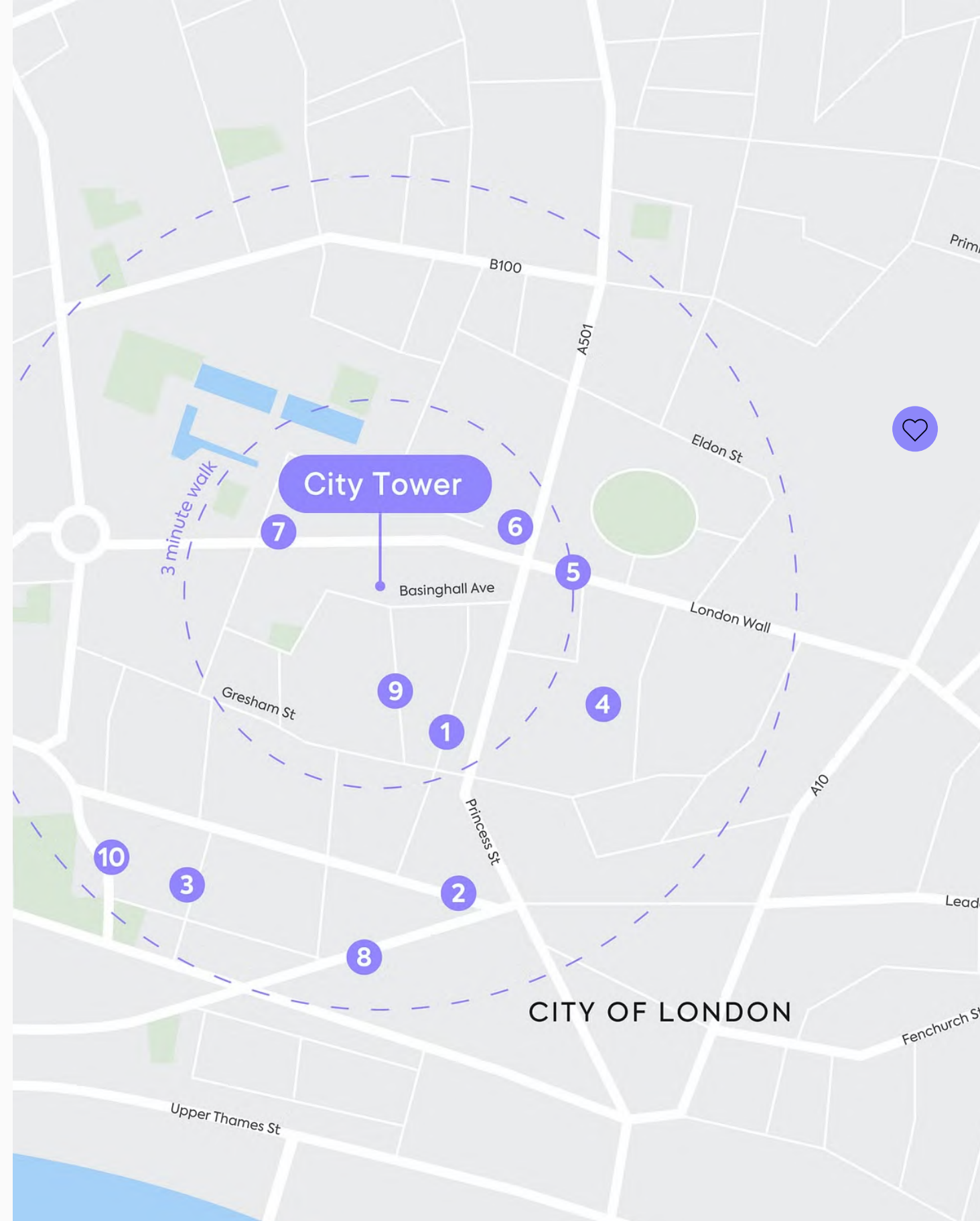
HAWKSMOOR GUILDHALL





Good Food

In recent times, The City has earned a reputation as one of London's culinary hotspots, with everything from renowned restaurants and trendy drinking holes, to cuisine from all over the world.



Tried and tested

Within
7
minutes

HIGHLIGHTS

- 1 Black Sheep Coffee & Cocktails
- 2 The Ned
- 3 Bread Street Kitchen
- 4 Natural Kitchen
- 5 Banh Mi Keu Deli City
- 6 Rosslyn Coffee London Wall
- 7 Barbie Green
- 8 Brigadiers
- 9 Hawksmoor Guildhall
- 10 The Ivy Asia

OUR PICK

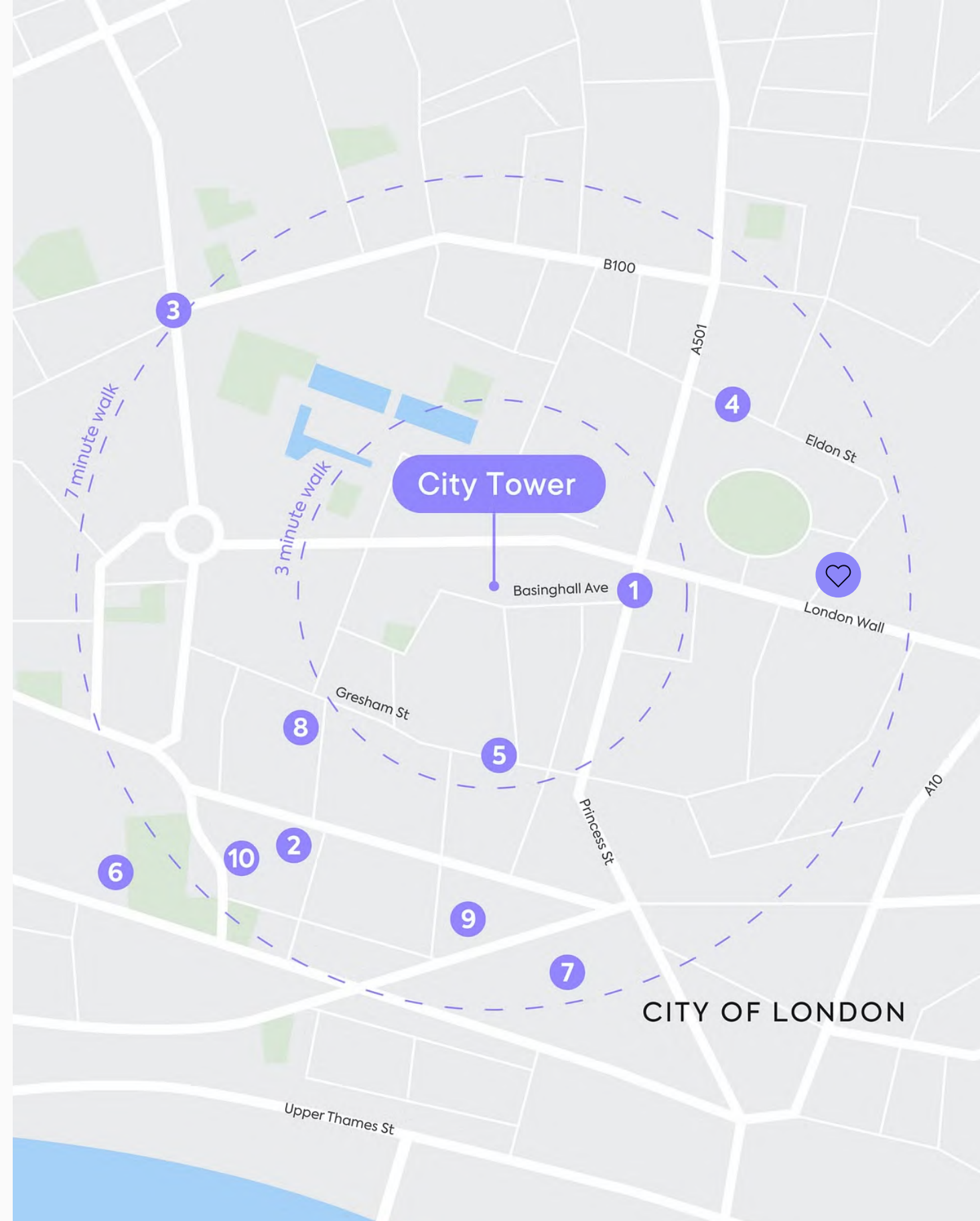
Davy's Wine Bar
A fully independent, family run business offering a diverse collection of wine bars across London.





Things to do

At City Tower, diversity is on your doorstep. The very best culture, art, history, fitness facilities and entertainment that London has to offer are all just minutes away - ideal for ensuring your team can strike the perfect work/life balance.



OUR PICK

Kobox St Paul's
State-of-the-art facilities and the best workout of your life.



Tried and tested

Within
7
minutes

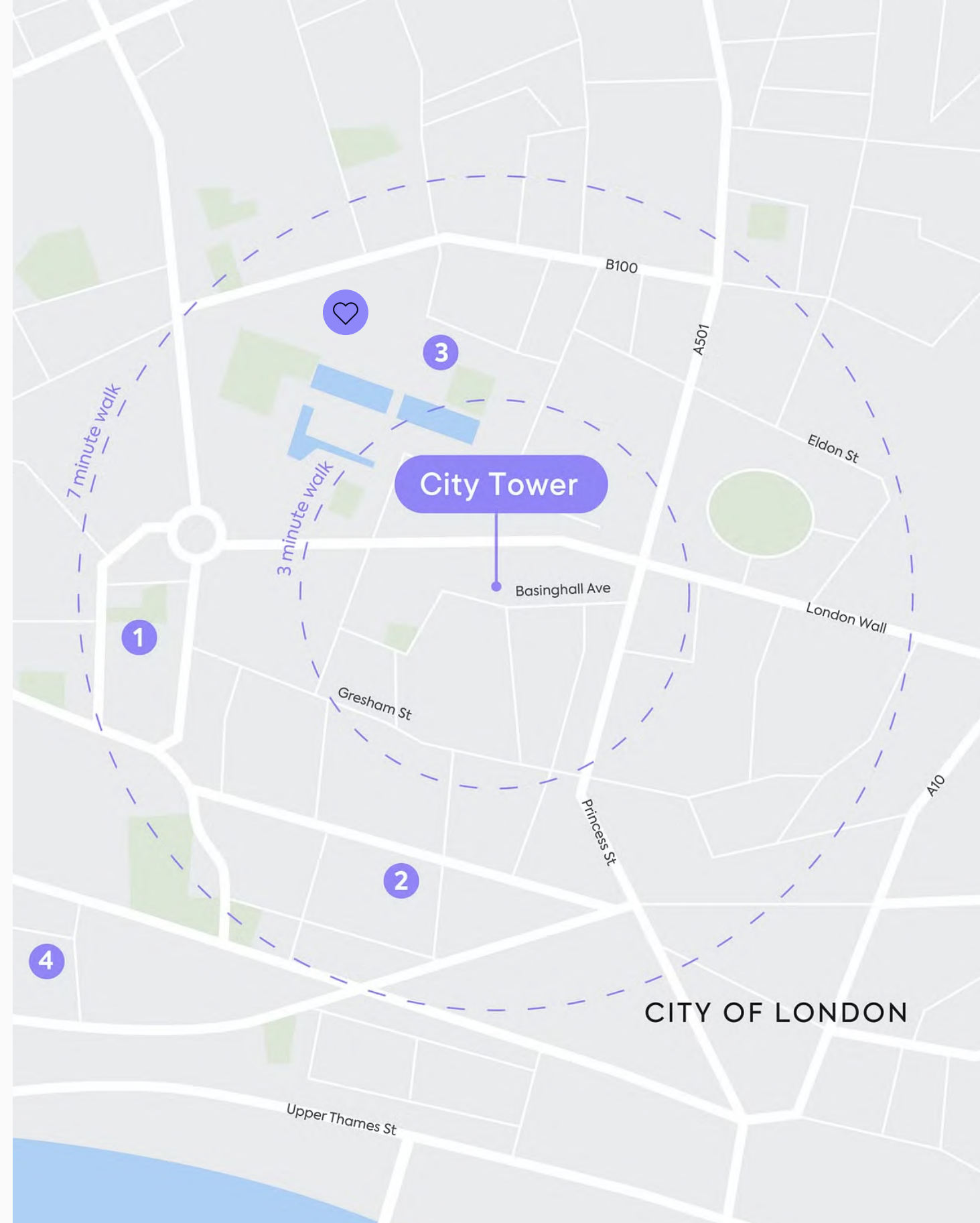
HIGHLIGHTS

- 1 Clays Cocktail Bar
- 2 One New Change
- 3 Barbican
- 4 Third Space, Moorgate
- 5 The Trading House
- 6 St Paul's Cathedral
- 7 London Mithraeum Bloomberg SPACE
- 8 Barry's St Paul's
- 9 Puttshack
- 10 F1 Arcade



Hidden Gems

In this vibrant area of London, there's something special around every corner - if you know where to look. With City Tower as your new base, you'll never get bored of uncovering new favourite spots.



Tried and tested

Within
7
minutes

HIGHLIGHTS

- 1 Postman's Park
- 2 Daunt books
- 3 Guildhall Cinema
- 4 Rena Spa, Leonardo Royal Hotel

OUR PICK

Barbican Cinema
Catch a film at London's world famous culture hub.





Get in touch

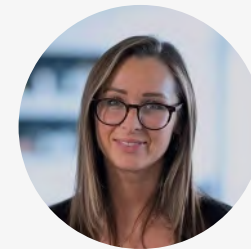
We hope we've piqued your interest, but it's only just the beginning. We'd love to show you more. Get in touch to find out more.



Richard Carson

+44 (0) 7436 030 120

richard.carson@gpe.co.uk



Grace Tomlinson

+44 (0) 7871 678 728

grace.tomlinson@gpe.co.uk

TALK TO US