

# 43 W 39TH ST | OFFICE SPACE



## PROPERTY INFORMATION

Address	43 W 39th St
Submarket	Bryant Park
Available SF	400-2,000 SF

## FEATURES

- Prime location
- Close to restaurants and coffee shops
- Heavy foot traffic

AVAILABLE UNITS	PRICE
-----------------	-------

## OFFICE UNITS

2nd Floor - Unit 2F	506 SF	\$80 PSF
2nd Floor - Unit 2R	1,494 SF	\$60 PSF

**JIANGWEI ZHOU**  
646-812-2151  
Contactwaynezhou@gmail.com

FOR LEASE ■ 43 W 39TH ST | BRYANT PARK



# OFFICE UNIT | 2R

## FEATURES

### SIZE

- Unit 2R - 1,500 SF

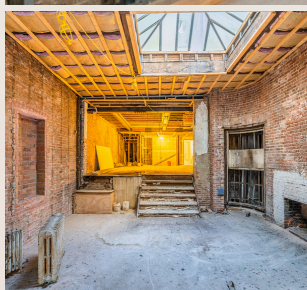
### ASKING RENT

- \$60 PSF

## HIGHLIGHTS

Discover a prime office space in the heart of Midtown Manhattan! This 1,500 sq. ft. unit offers an ideal layout for professionals and businesses looking for functionality and convenience.

- Plenty of natural light
- Prime location
- Close to restaurant and coffee shops



JIANGWEI ZHOU

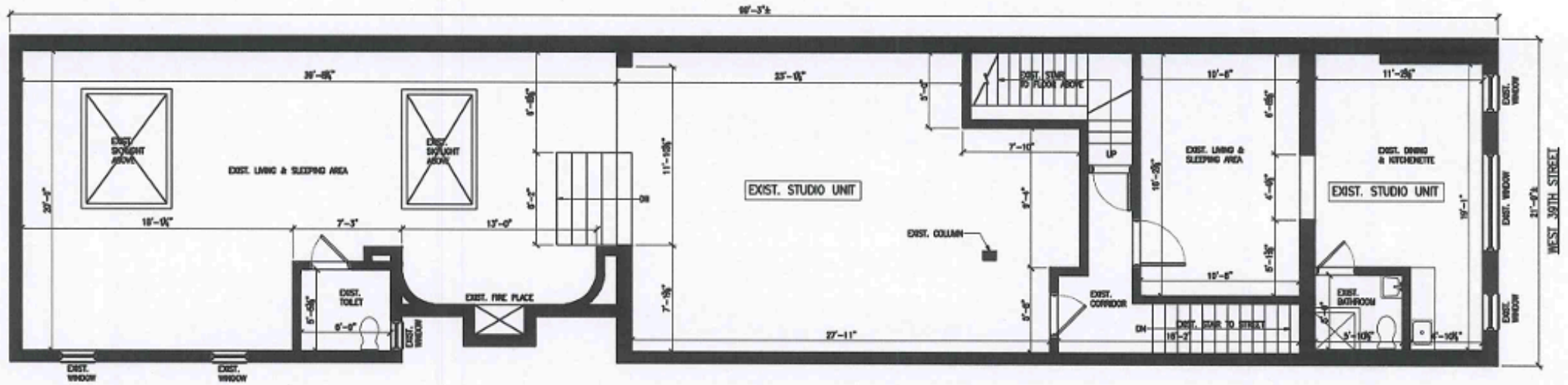
646-812-2151

Contactwaynezhou@gmail.com

FOR LEASE ■ 43 W 39TH ST | BRYANT PARK

exp  
REALTY

# FLOOR PLAN



① EXIST. 2nd FLOOR PLAN  
SCALE: 1/8"=1'-0"