

OFFICE AVAILABLE FOR LEASE: 1,400 SF

1605 Meridian Avenue, San Jose, CA

Property Highlights

- 1,400 SF Available
- Large Lobby
- Large Warehouse/Office
- Private Restroom
- Ample Parking
- ADA Parking
- Future Home of Trudy's Bridal
- \$3.35 NNN
- Sublease Available

• **Call to Tour**

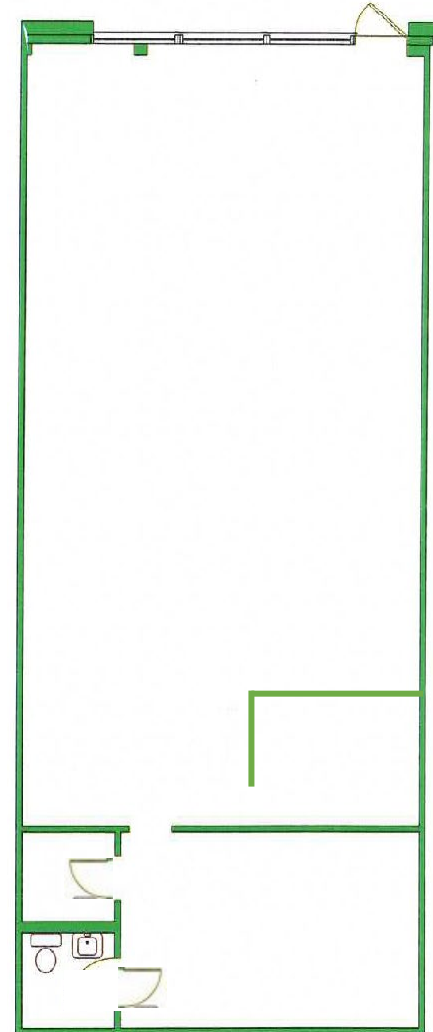
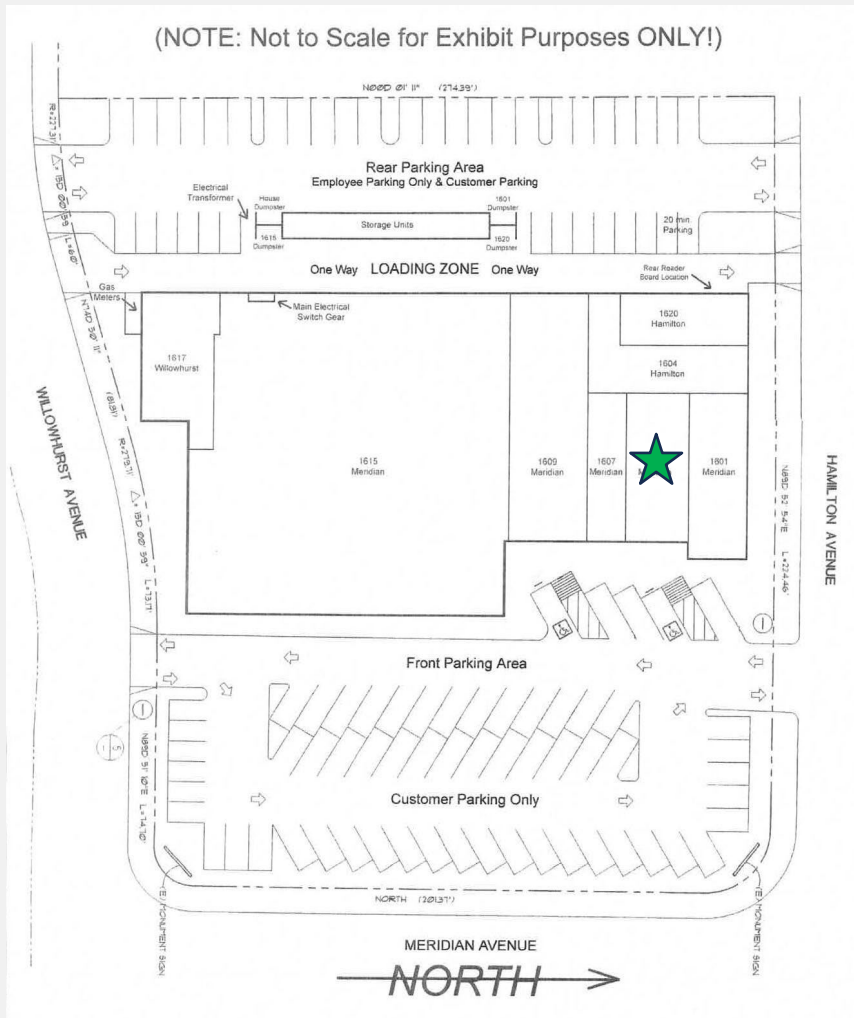
WILLIAM LONGO
408-529-8110
DRE #02126991
WLONGO@GLOBALCOMMERCIALPROP.COM

GLOBAL
COMMERCIAL

RALPH LONGO
408-529-1362
DRE #01202211
RLONGO@GLOBALCOMMERCIALPROP.COM

OFFICE AVAILABLE FOR LEASE: 1,400 SF

1605 Meridian Avenue, San Jose, CA



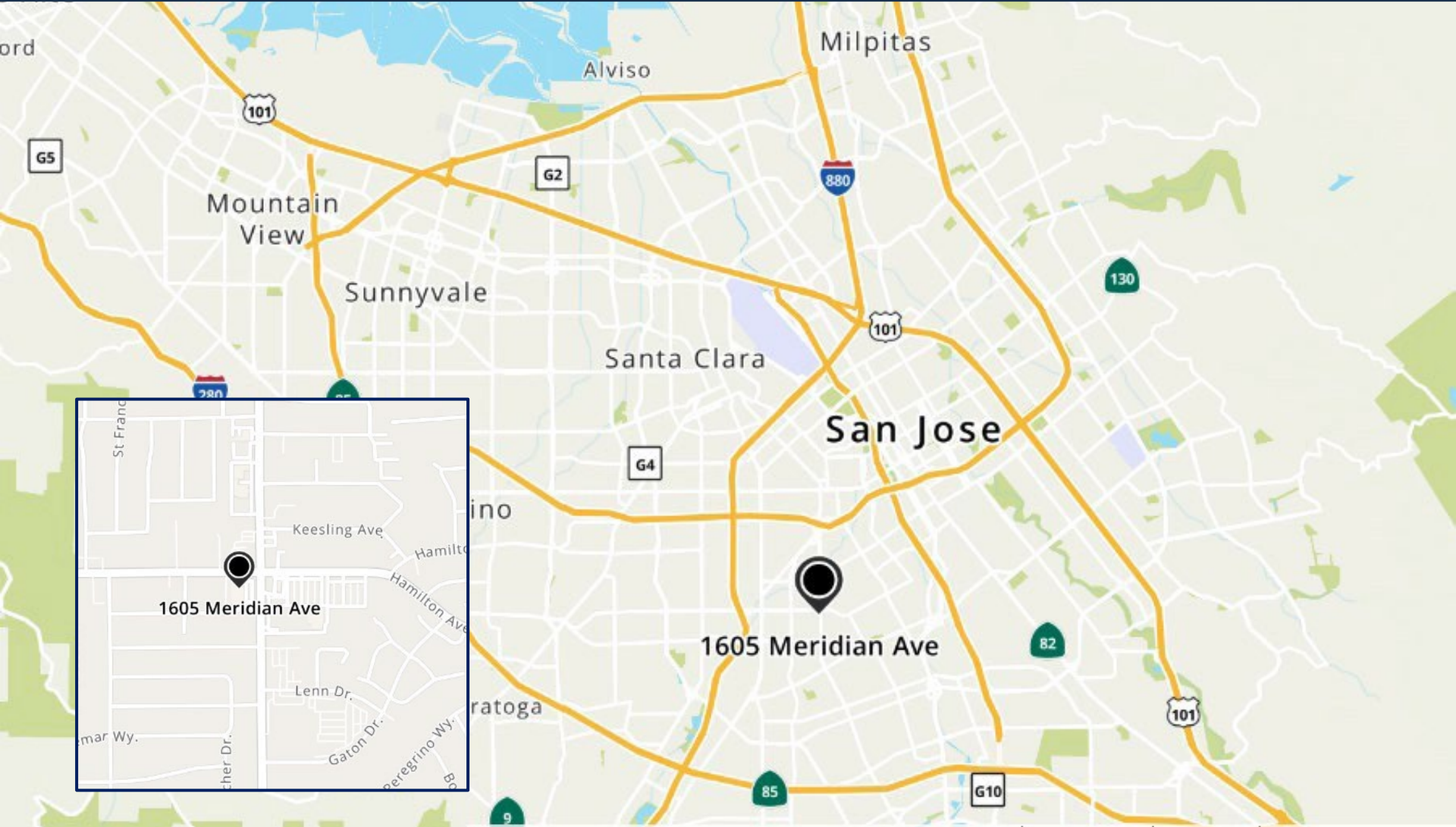
WILLIAM LONGO
408-529-8110
DRE #02126991
WLONGO@GLOBALCOMMERCIALPROP.COM

GLOBAL
COMMERCIAL

RALPH LONGO
408-529-1362
DRE #01202211
RLONGO@GLOBALCOMMERCIALPROP.COM

OFFICE AVAILABLE FOR LEASE: 1,400 SF

1605 Meridian Avenue, San Jose, CA



WILLIAM LONGO
408-529-8110
DRE #02126991
WLONGO@GLOBALCOMMERCIALPROP.COM

GLOBAL
COMMERCIAL

RALPH LONGO
408-529-1362
DRE #01202211
RLONGO@GLOBALCOMMERCIALPROP.COM