



RETAIL ENDCAP FOR LEASE

8621-8629 LEE HIGHWAY

8625 U.S. 29, FAIRFAX, VA 22031



8621-8629 LEE HIGHWAY

PROPERTY SUMMARY



PROPERTY DESCRIPTION

Prime endcap space for lease in Merrifield. This property offers exceptional visibility and accessibility with prominent signage visible to 33,405 vehicles daily on Lee Hwy. Conveniently located near I-495, I-66, and US-29, this space provides easy access for the affluent and dense customer base in the surrounding area.

PROPERTY HIGHLIGHTS

- Merrifield small shop space available
- Signage visible to Lee Hwy (33,405 VPD)
- Well positioned near I-495, I66, and US-29
- The area features an affluent and dense customer base
- Egress and Ingress points off US-29/Lee Hwy and Fairhill Road

OFFERING SUMMARY

Lease Rate:	Negotiable
Available SF:	2,900 SF
Lot Size:	0.74 Acres
Building Size:	7,707 SF

DEMOGRAPHICS

	1 MILE	3 MILES	5 MILES
Total Households	7,475	46,838	120,407
Total Population	19,014	125,868	328,970
Average HH Income	\$188,986	\$197,221	\$192,620

8621-8629 LEE HIGHWAY

RETAILER/ACCESS MAP



8625 U.S. 29, FAIRFAX, VA 22031

8621-8629 LEE HIGHWAY

ADDITIONAL PHOTOS

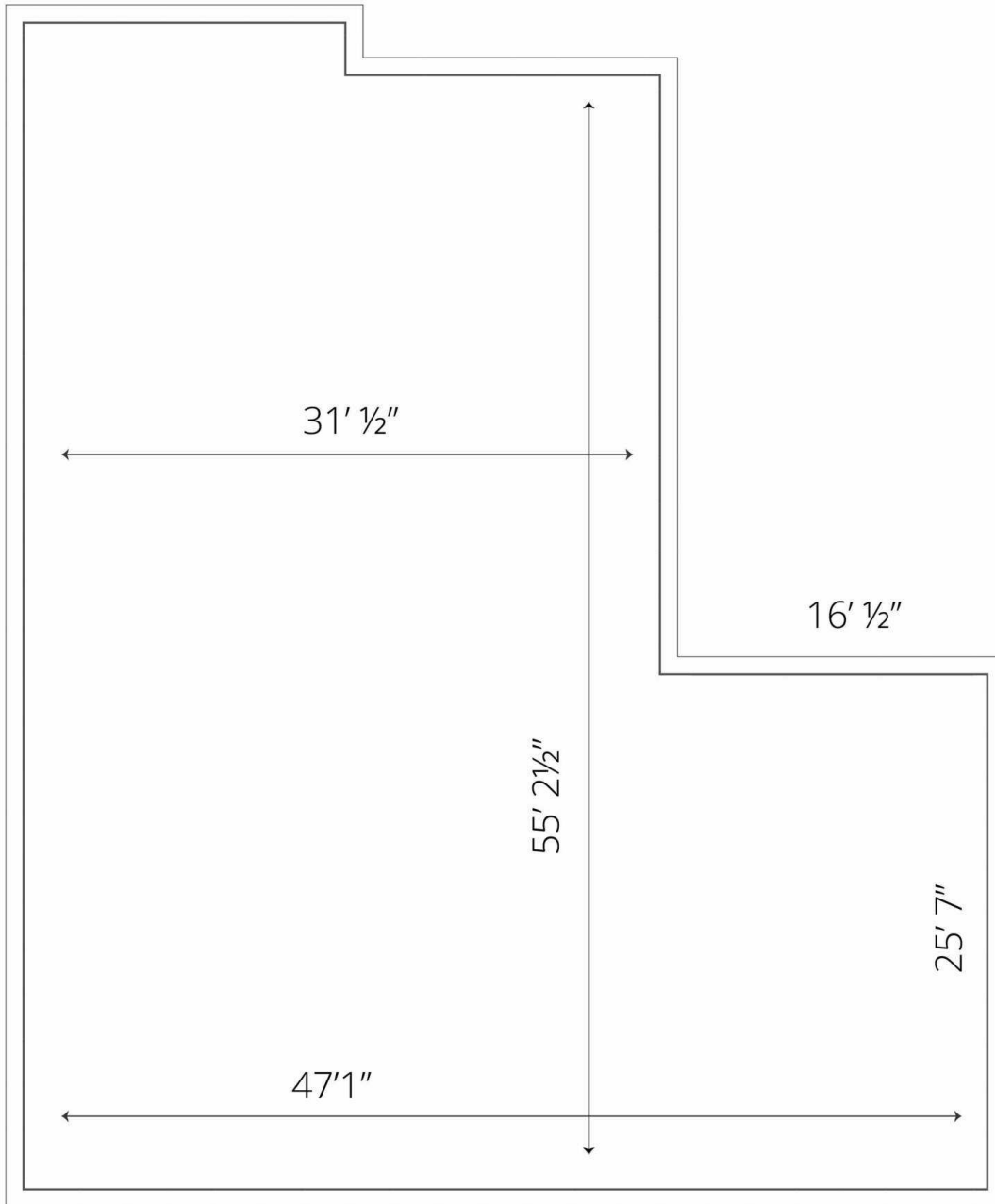


8621-8629 LEE HIGHWAY

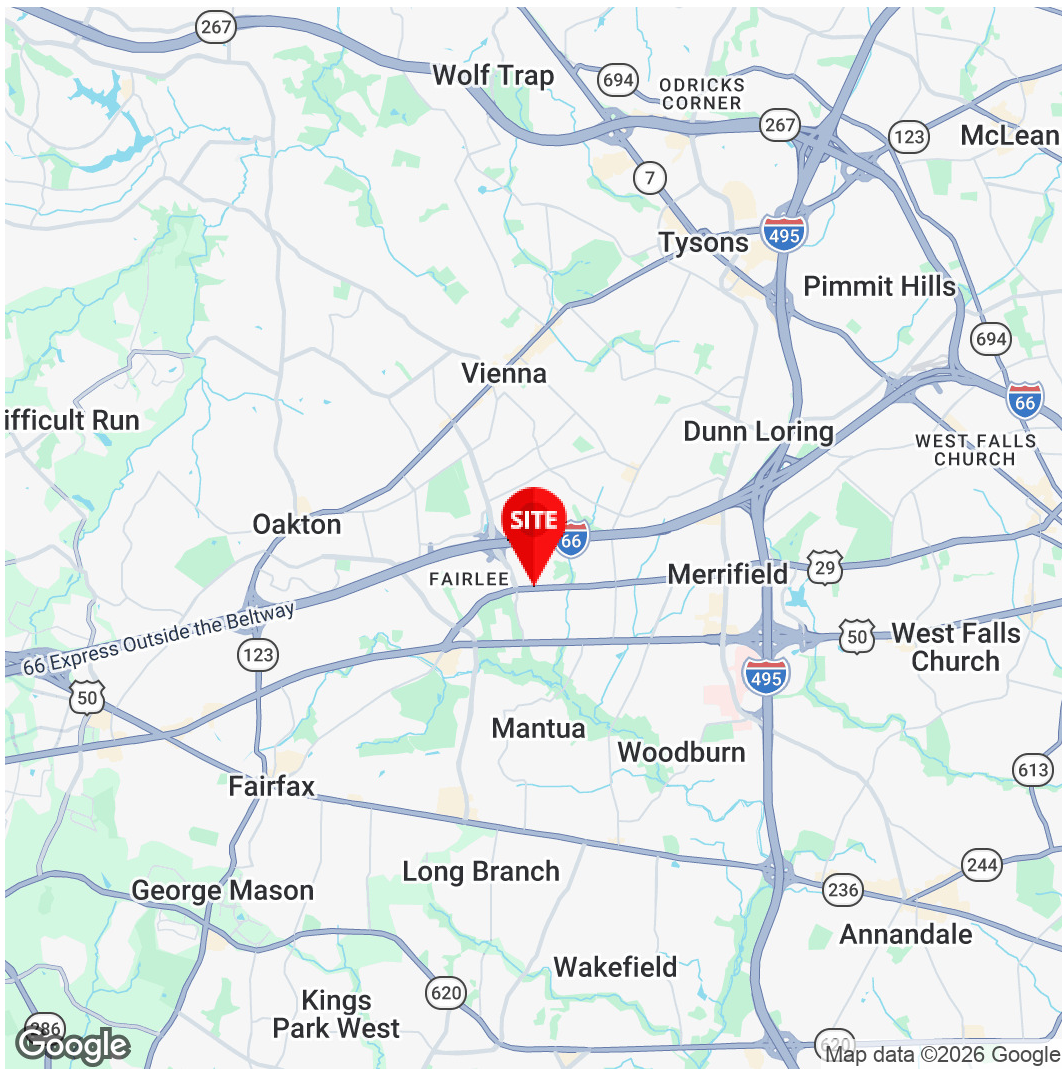
SAMPLE FLOORPLAN - 2,900 SF



FAIRHILL ROAD



ROUTE 29. LEE HIGHWAY



Joseph Farina
Principal
571.620.5142
jfarina@divaris.com



The information contained herein should be considered confidential and remains the sole property of Divaris Real Estate, Inc. at all times. Although every effort has been made to ensure accuracy, no liability will be accepted for any errors or omissions. Disclosure of any information contained herein is prohibited except with the express written permission of Divaris Real Estate, Inc.