

FOR LEASE

300 W ADAMS ST

Jacksonville, FL 32202



OFFERING SUMMARY

Lease Rate:	\$19.00 SF/yr (MG)
Available SF:	270 - 18,175 SF
Year Built:	1927
Zoning:	CCBD

PROPERTY OVERVIEW

Unlock the potential of your business at 300 W Adams St, Jacksonville, FL, 32202. This premier property presents a range of meticulously designed suites, from small to large, complemented by on-site maintenance for your convenience. Situated mere steps from the County and Federal Courthouses, this strategic location offers unparalleled accessibility for legal professionals and businesses seeking proximity to the heart of civic activity. Elevate your operations in a dynamic environment that fosters productivity and success, with everything you need right at your fingertips. Welcome to a workspace tailored to meet your unique needs and elevate your business to new heights.

PROPERTY HIGHLIGHTS

- Historic 6 story building
- Common area renovations
- Convenient on-site maintenance
- 73 surface parking spaces
- Proximity to County and Federal Courthouses
- Rooftop options available

PRESENTED BY:

ROCHELLE PIERSALL
904.599.3480
rochelle@kinkadecommercial.com

AMANDA KINKADE
904.635.6376
amanda@kinkadecommercial.com

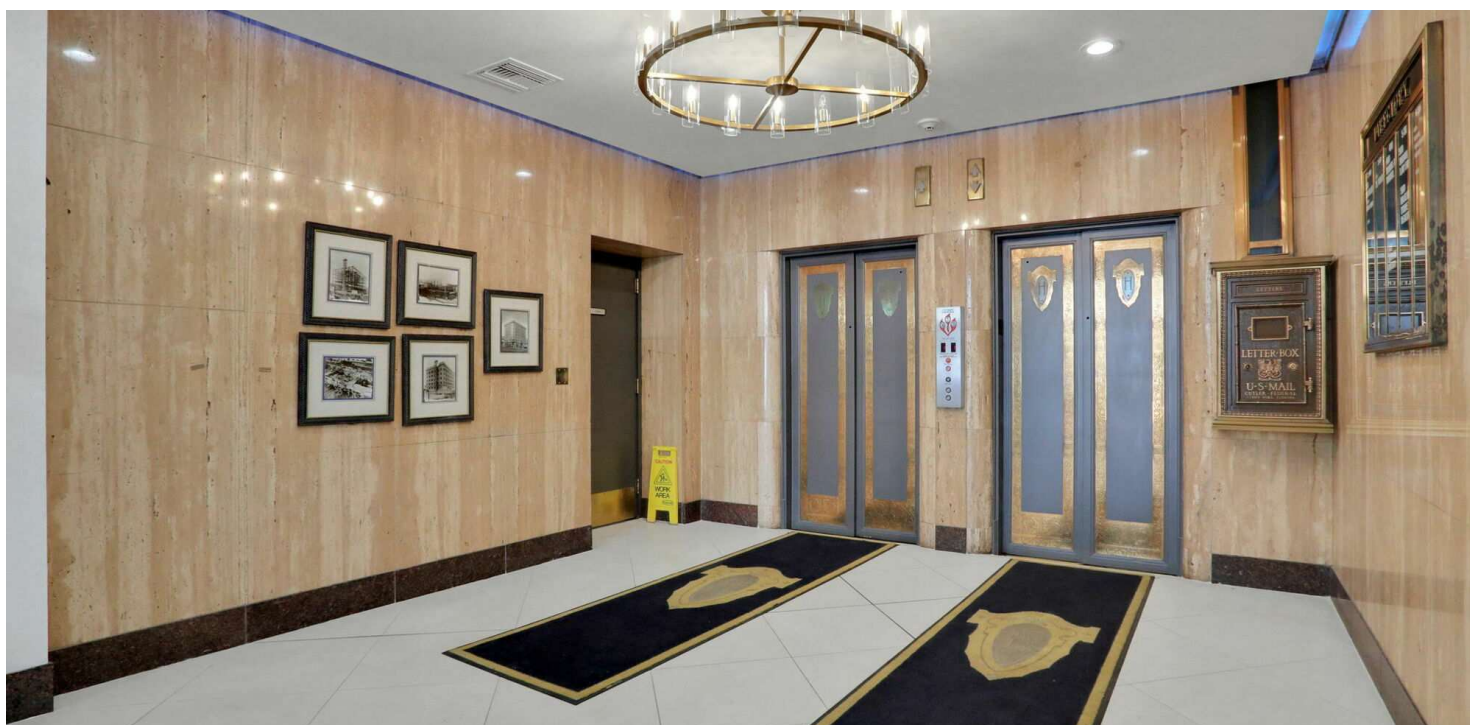
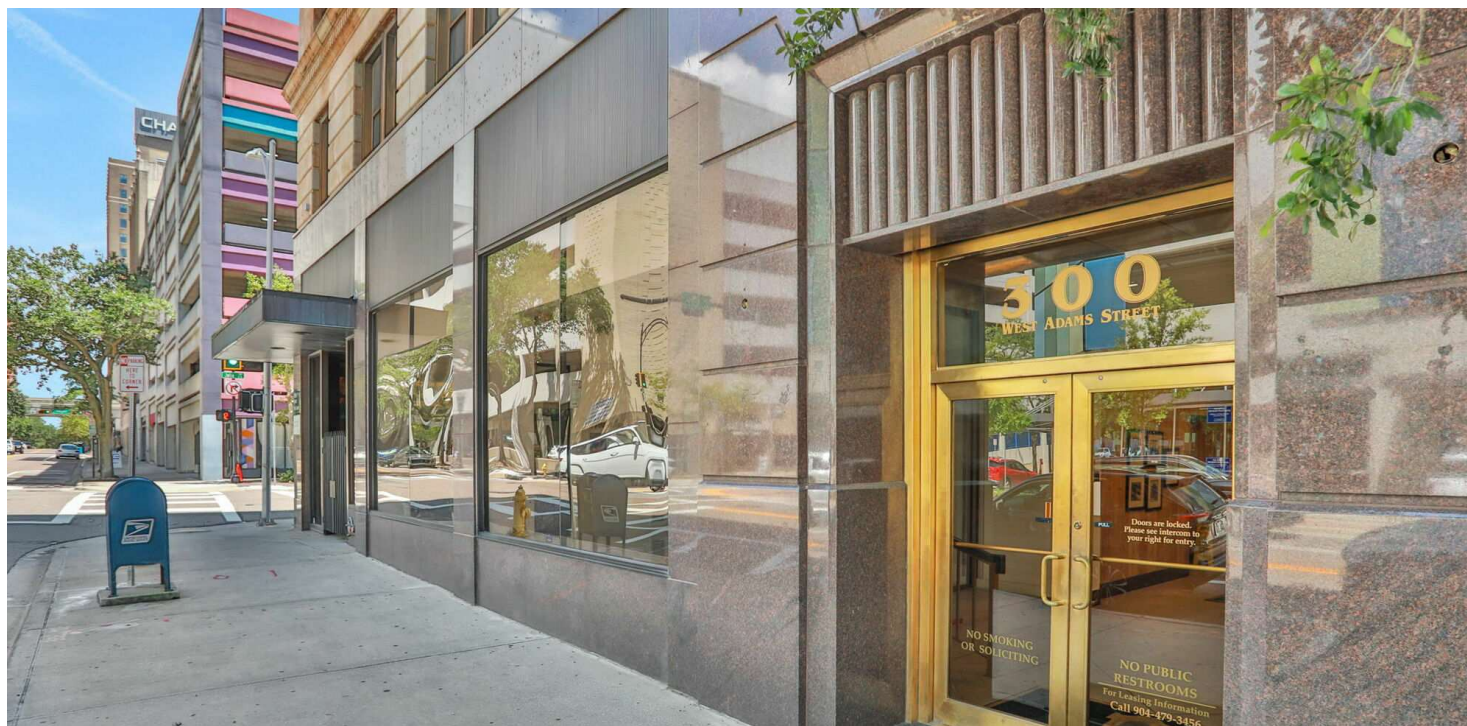
FOR LEASE

300 W ADAMS ST



2929 Plummer Cove Rd., Suite 2
Jacksonville, FL 32223

Jacksonville, FL 32202



PRESENTED BY:

ROCHELLE PIERSALL
904.599.3480
rochelle@kinkadecommercial.com

AMANDA KINKADE
904.635.6376
amanda@kinkadecommercial.com

ADDITIONAL PHOTOS

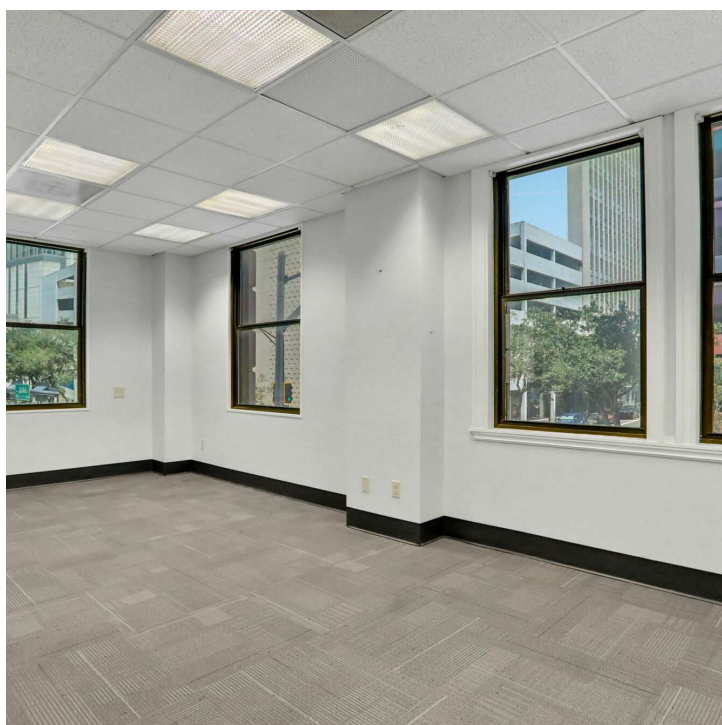
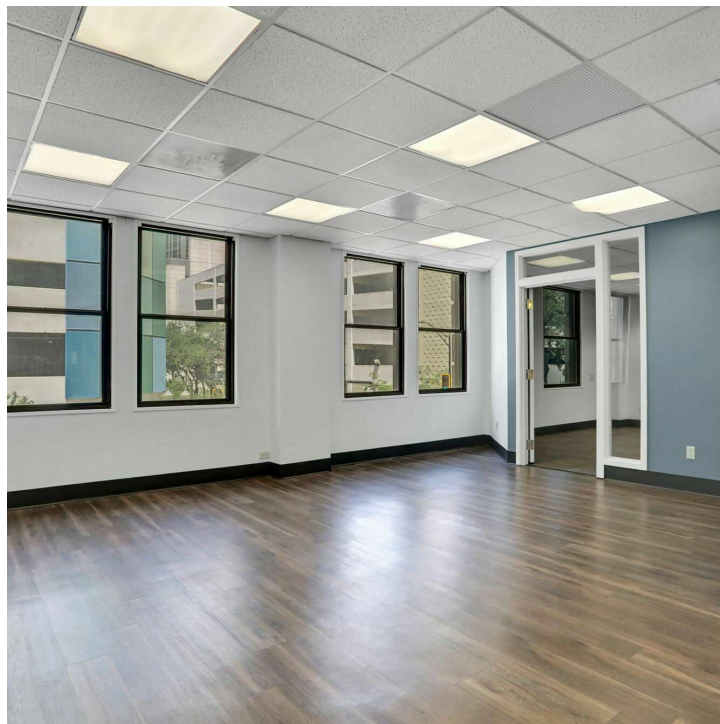
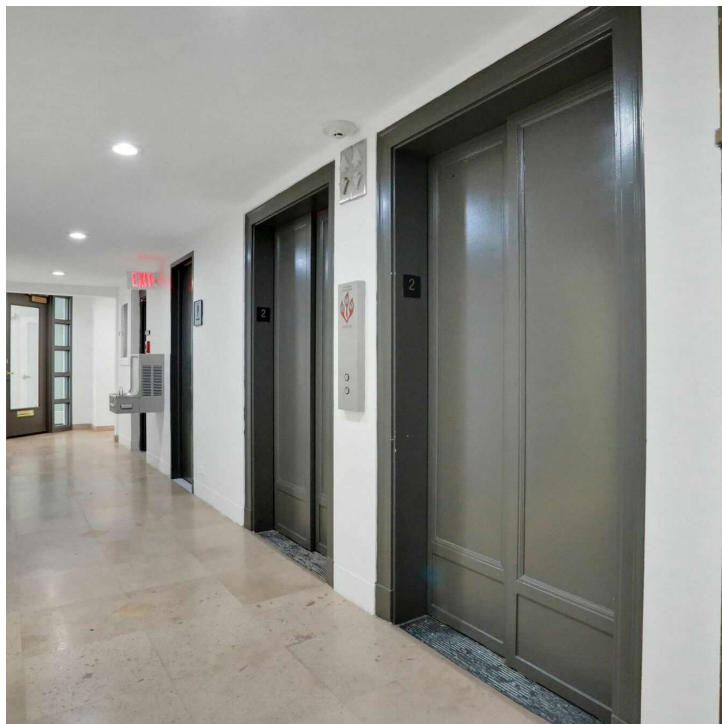
FOR LEASE

300 W ADAMS ST.- 2ND FLOOR



2929 Plummer Cove Rd., Suite 2
Jacksonville, FL 32223

Jacksonville, FL 32202



PRESENTED BY:

ROCHELLE PIERSALL
904.599.3480
rochelle@kinkadecommercial.com

AMANDA KINKADE
904.635.6376
amanda@kinkadecommercial.com

ADDITIONAL PHOTOS

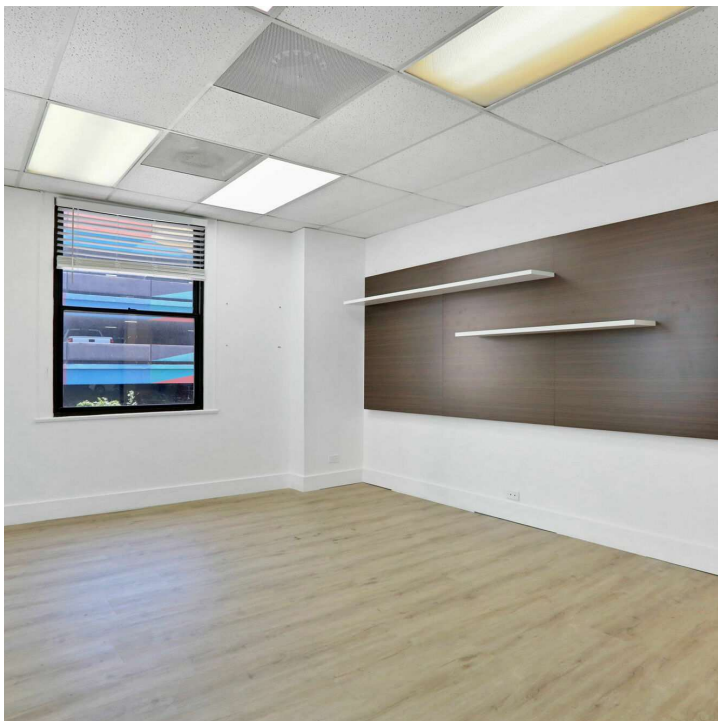
FOR LEASE

300 W ADAMS ST.- 3RD FLOOR

Jacksonville, FL 32202



2929 Plummer Cove Rd., Suite 2
Jacksonville, FL 32223



PRESENTED BY:

ROCHELLE PIERSALL
904.599.3480
rochelle@kinkadecommercial.com

AMANDA KINKADE
904.635.6376
amanda@kinkadecommercial.com

ADDITIONAL PHOTOS

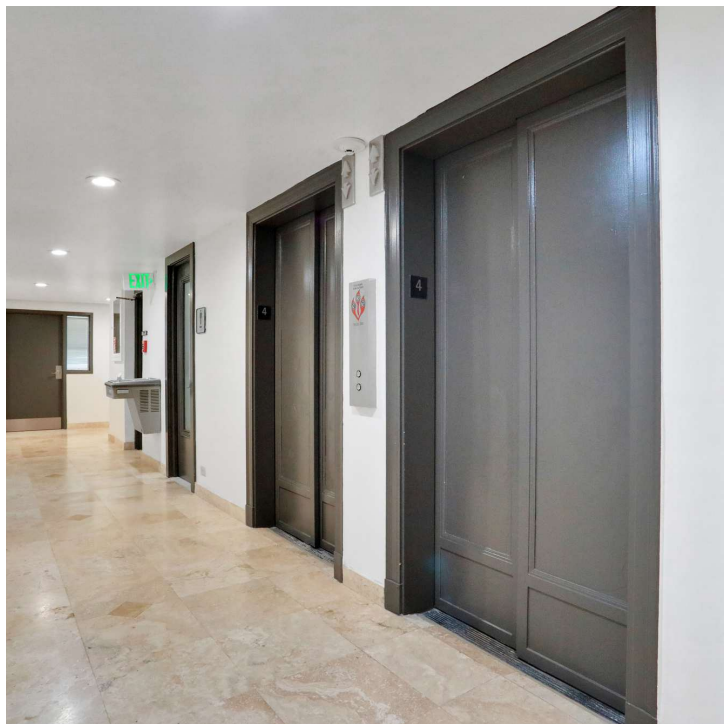
FOR LEASE

300 W ADAMS ST.- 4TH FLOOR

Jacksonville, FL 32202



2929 Plummer Cove Rd., Suite 2
Jacksonville, FL 32223



PRESENTED BY:

ROCHELLE PIERSALL
904.599.3480
rochelle@kinkadecommercial.com

AMANDA KINKADE
904.635.6376
amanda@kinkadecommercial.com

ADDITIONAL PHOTOS

FOR LEASE

300 W ADAMS ST.- 5TH FLOOR

Jacksonville, FL 32202



2929 Plummer Cove Rd., Suite 2
Jacksonville, FL 32223



PRESENTED BY:

ROCHELLE PIERSALL
904.599.3480
rochelle@kinkadecommercial.com

AMANDA KINKADE
904.635.6376
amanda@kinkadecommercial.com

ADDITIONAL PHOTOS

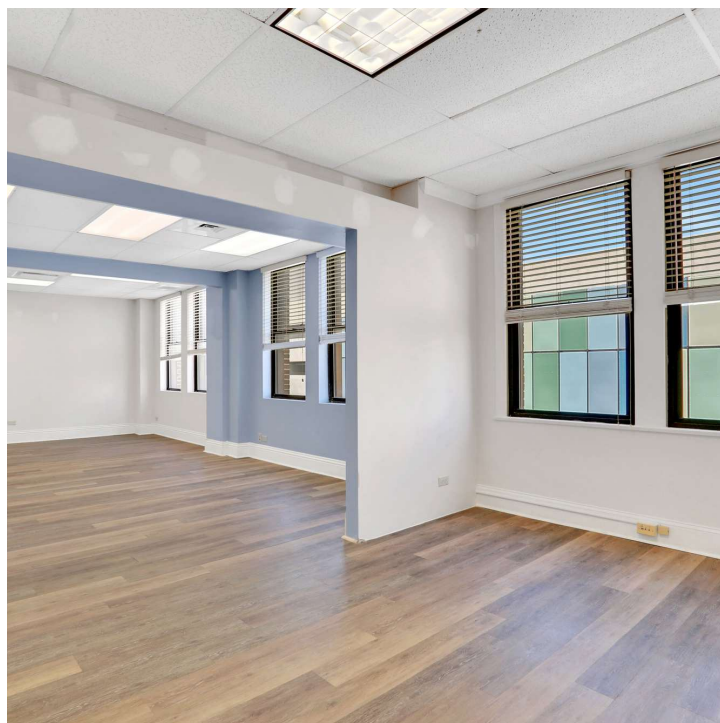
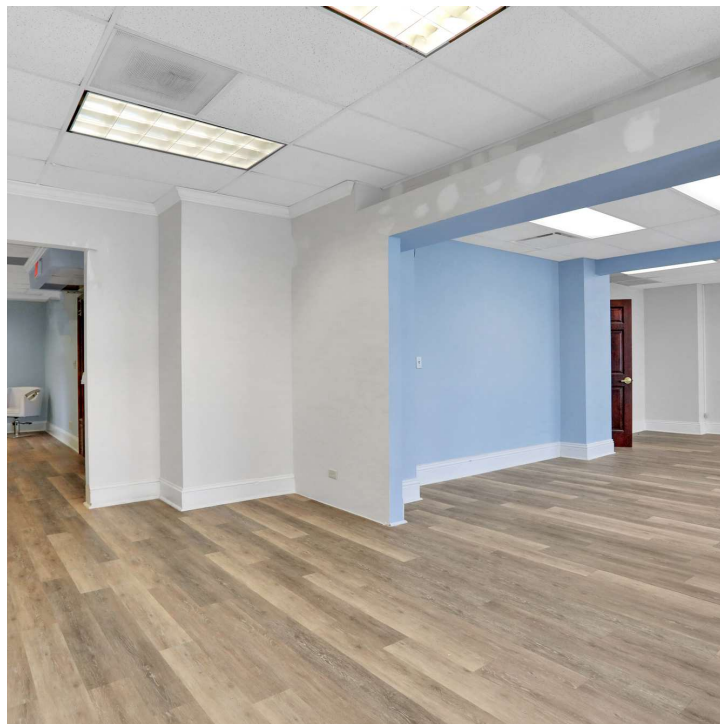
FOR LEASE

300 W ADAMS ST.- 6TH FLOOR

Jacksonville, FL 32202



2929 Plummer Cove Rd., Suite 2
Jacksonville, FL 32223



PRESENTED BY:

ROCHELLE PIERSALL

904.599.3480

rochelle@kinkadecommercial.com

AMANDA KINKADE

904.635.6376

amanda@kinkadecommercial.com

ADDITIONAL PHOTOS

FOR LEASE
300 W ADAMS ST- ROOFTOP



2929 Plummer Cove Rd., Suite 2
Jacksonville, FL 32223

Jacksonville, FL 32202



PRESENTED BY:

ROCHELLE PIERSALL
904.599.3480
rochelle@kinkadecommercial.com

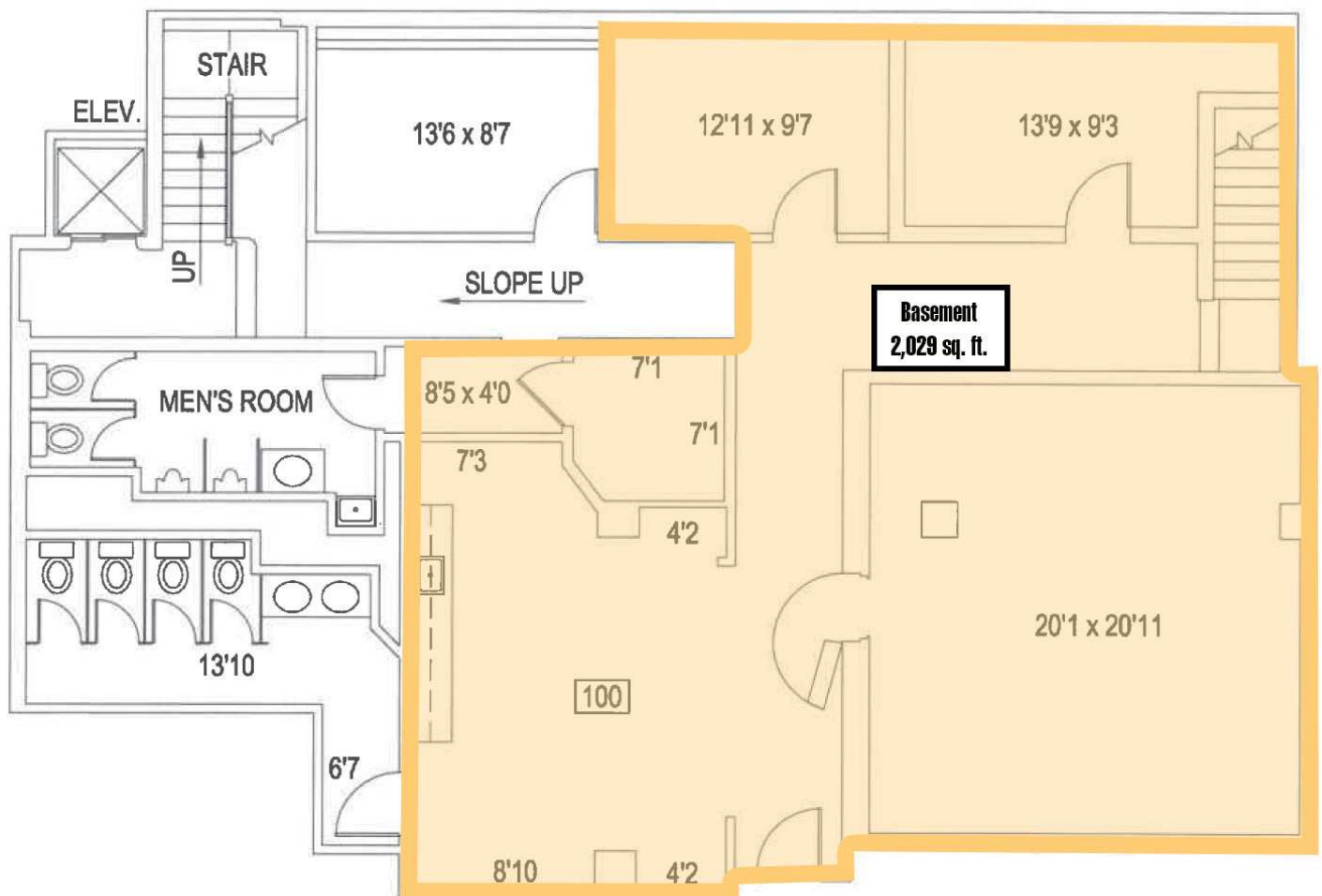
AMANDA KINKADE
904.635.6376
amanda@kinkadecommercial.com

ADDITIONAL PHOTOS

FOR LEASE

300 W ADAMS ST BASEMENT

Jacksonville, FL 32202



PRESENTED BY:

ROCHELLE PIERSALL
904.599.3480
rochelle@kinkadecommercial.com

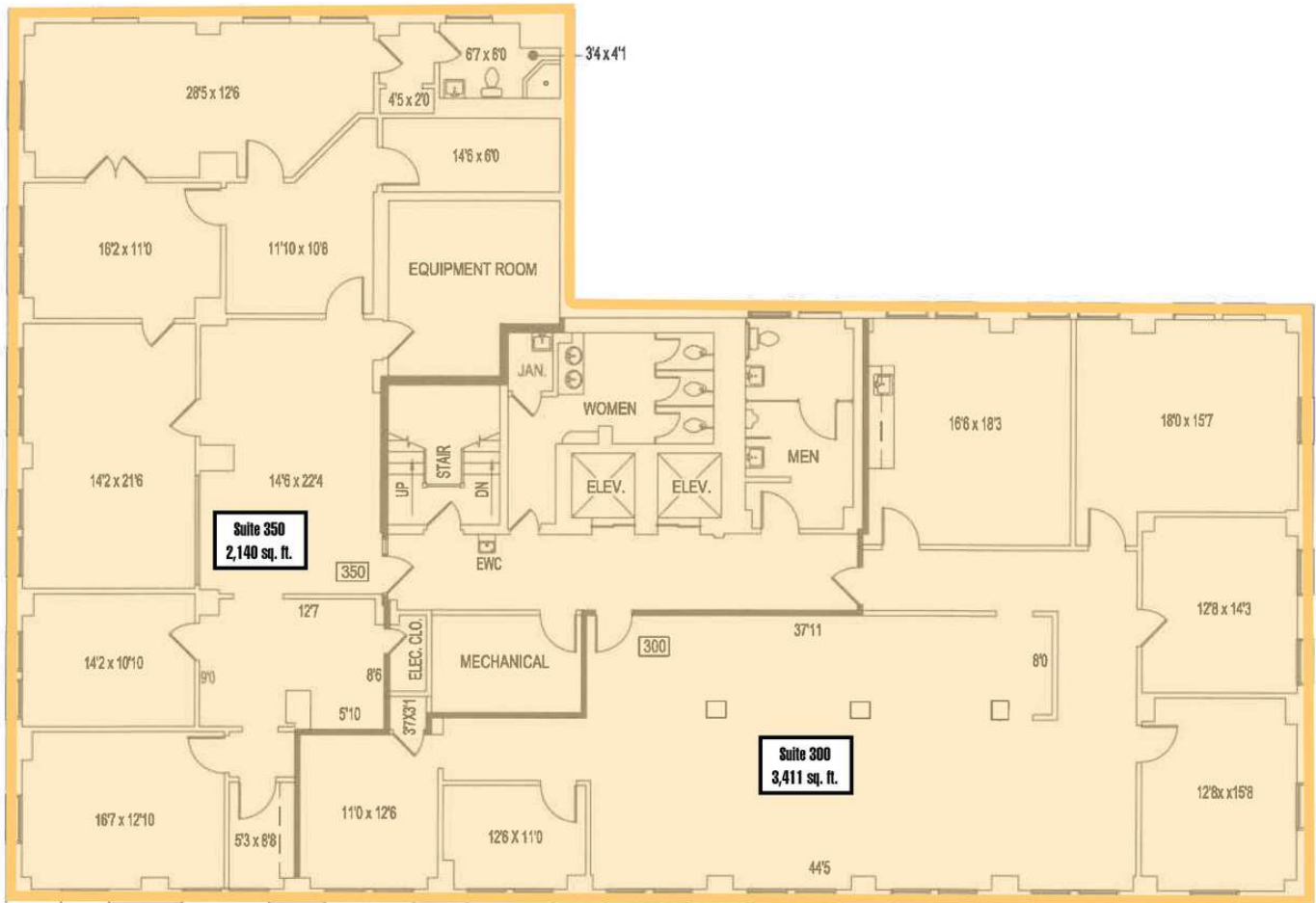
AMANDA KINKADE
904.635.6376
amanda@kinkadecommercial.com

ADDITIONAL PHOTOS

FOR LEASE

300 W ADAMS ST 3RD FLOOR

Jacksonville, FL 32202



PRESENTED BY:

ROCHELLE PIERSALL
904.599.3480
rochelle@kinkadecommercial.com

AMANDA KINKADE
904.635.6376
amanda@kinkadecommercial.com

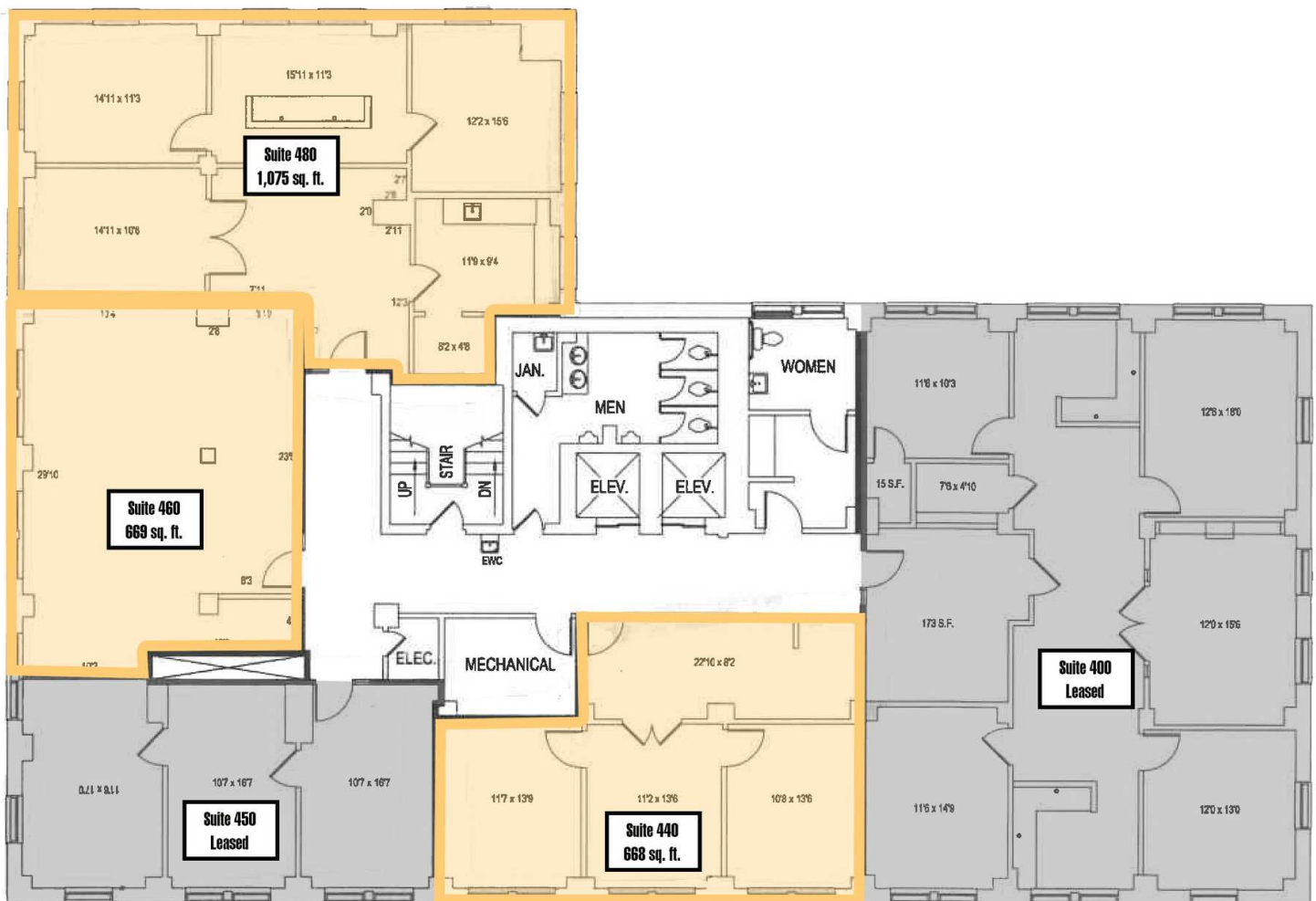
FOR LEASE

300 W ADAMS ST 4TH FLOOR



2929 Plummer Cove Rd., Suite 2
Jacksonville, FL 32223

Jacksonville, FL 32202



PRESENTED BY:

ROCHELLE PIERSALL
904.599.3480
rochelle@kinkadecommercial.com

AMANDA KINKADE
904.635.6376
amanda@kinkadecommercial.com

ADDITIONAL PHOTOS

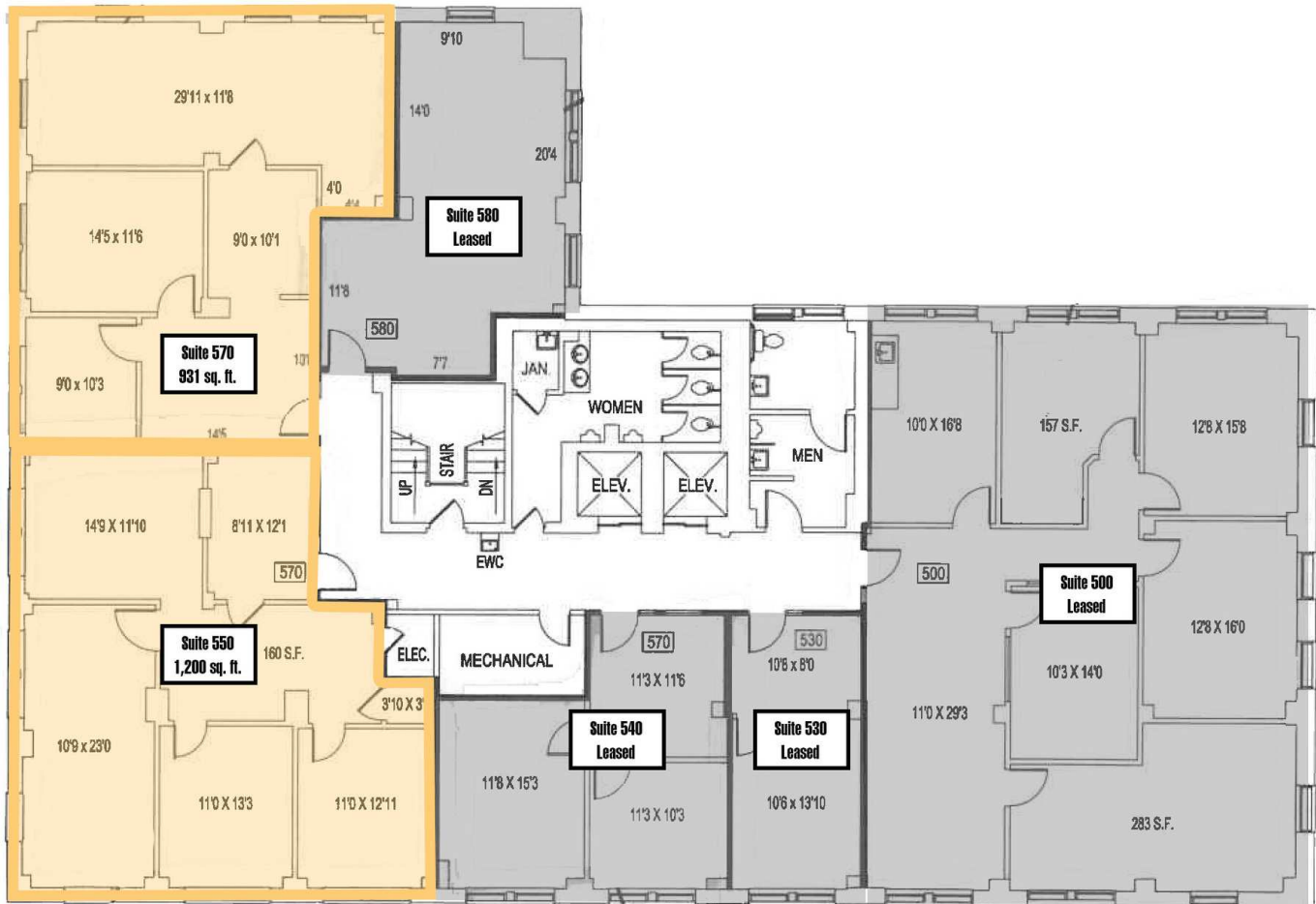
FOR LEASE

300 W ADAMS ST 5TH FLOOR



2929 Plummer Cove Rd., Suite 2
Jacksonville, FL 32223

Jacksonville, FL 32202



PRESENTED BY:

ROCHELLE PIERSALL
904.599.3480
rochelle@kinkadecommercial.com

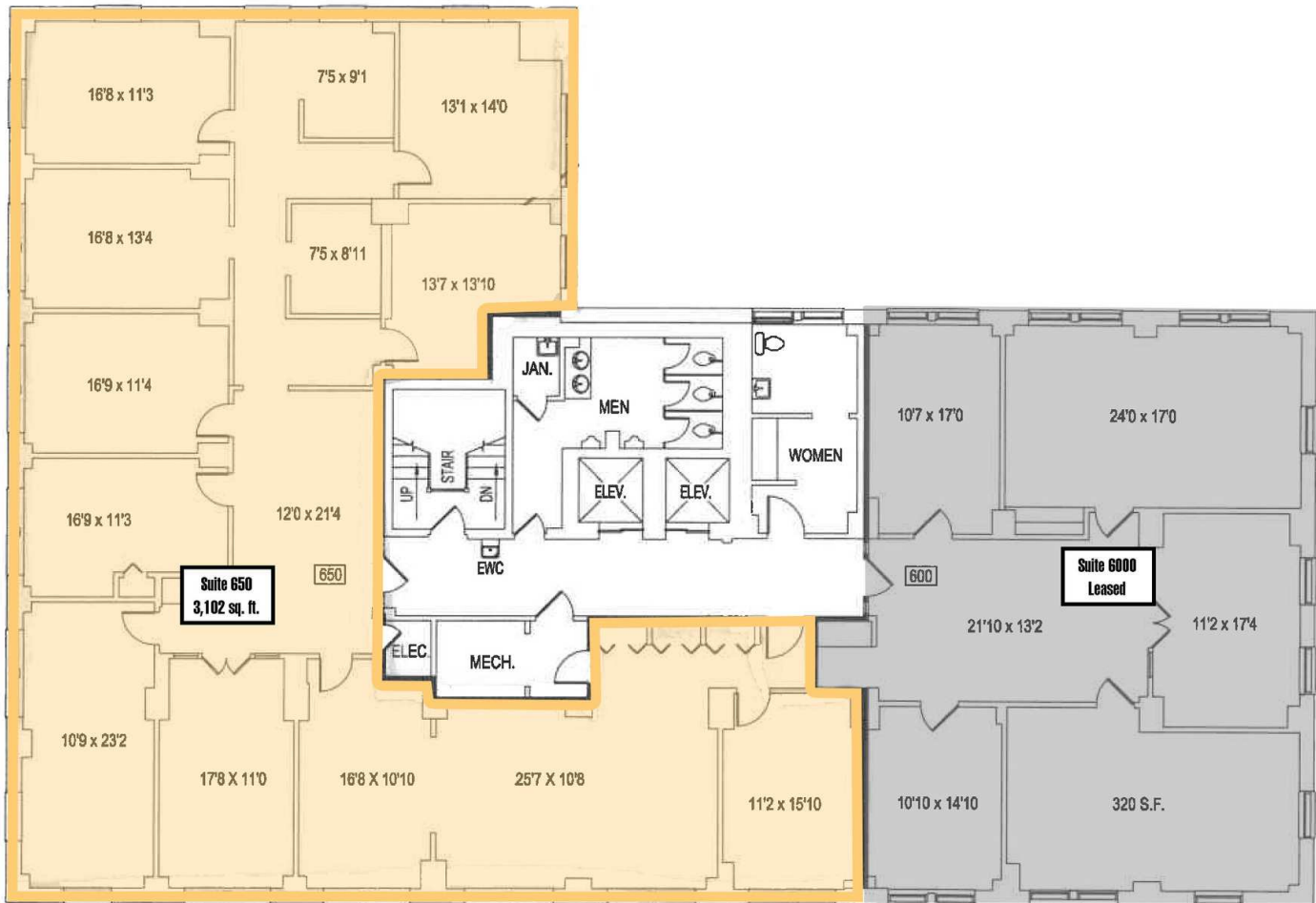
AMANDA KINKADE
904.635.6376
amanda@kinkadecommercial.com

ADDITIONAL PHOTOS

FOR LEASE

300 W ADAMS ST 6TH FLOOR

Jacksonville, FL 32202



PRESENTED BY:

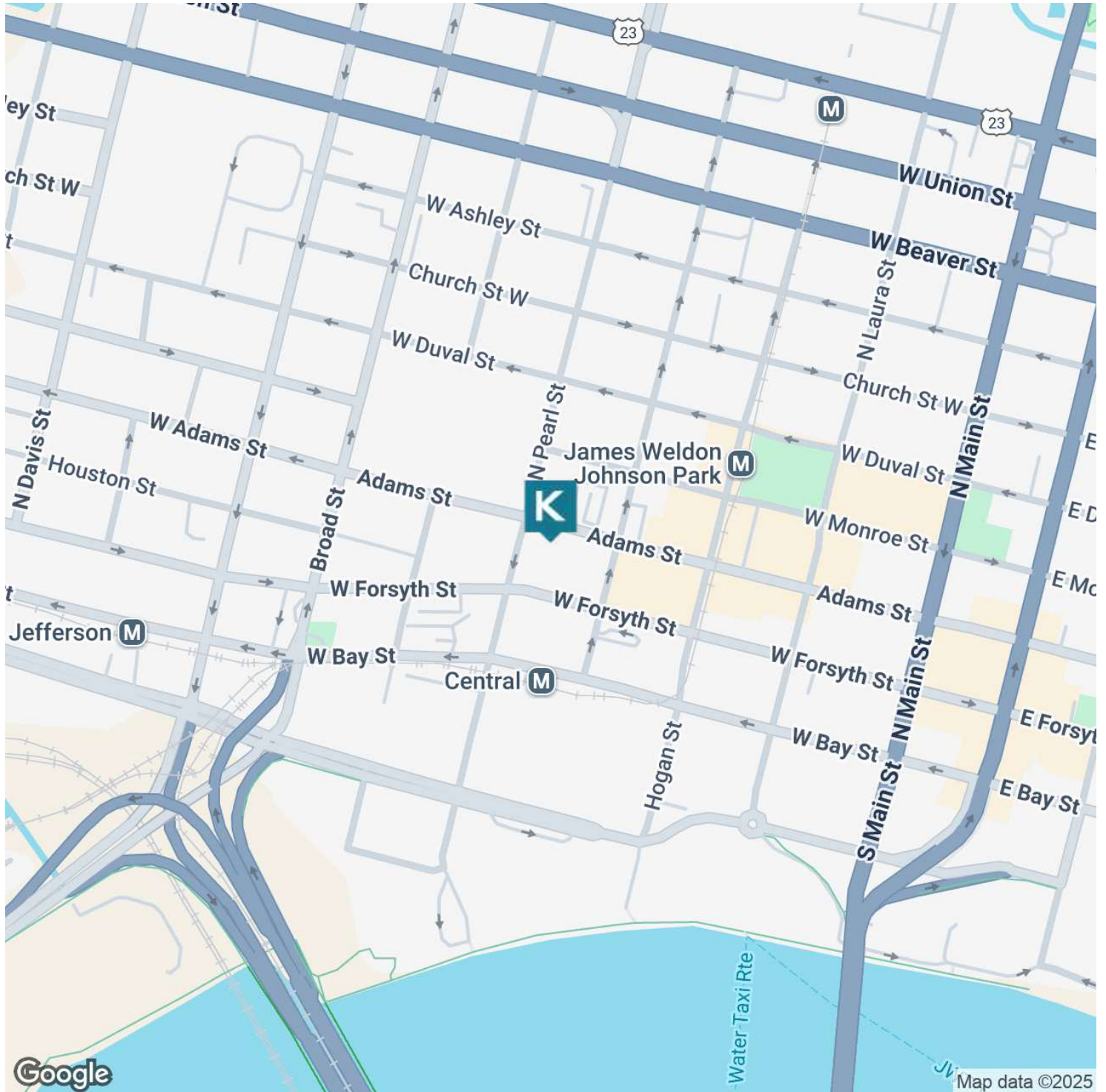
ROCHELLE PIERSALL
904.599.3480
rochelle@kinkadecommercial.com

AMANDA KINKADE
904.635.6376
amanda@kinkadecommercial.com

FOR LEASE

300 W ADAMS ST

Jacksonville, FL 32202



PRESENTED BY:

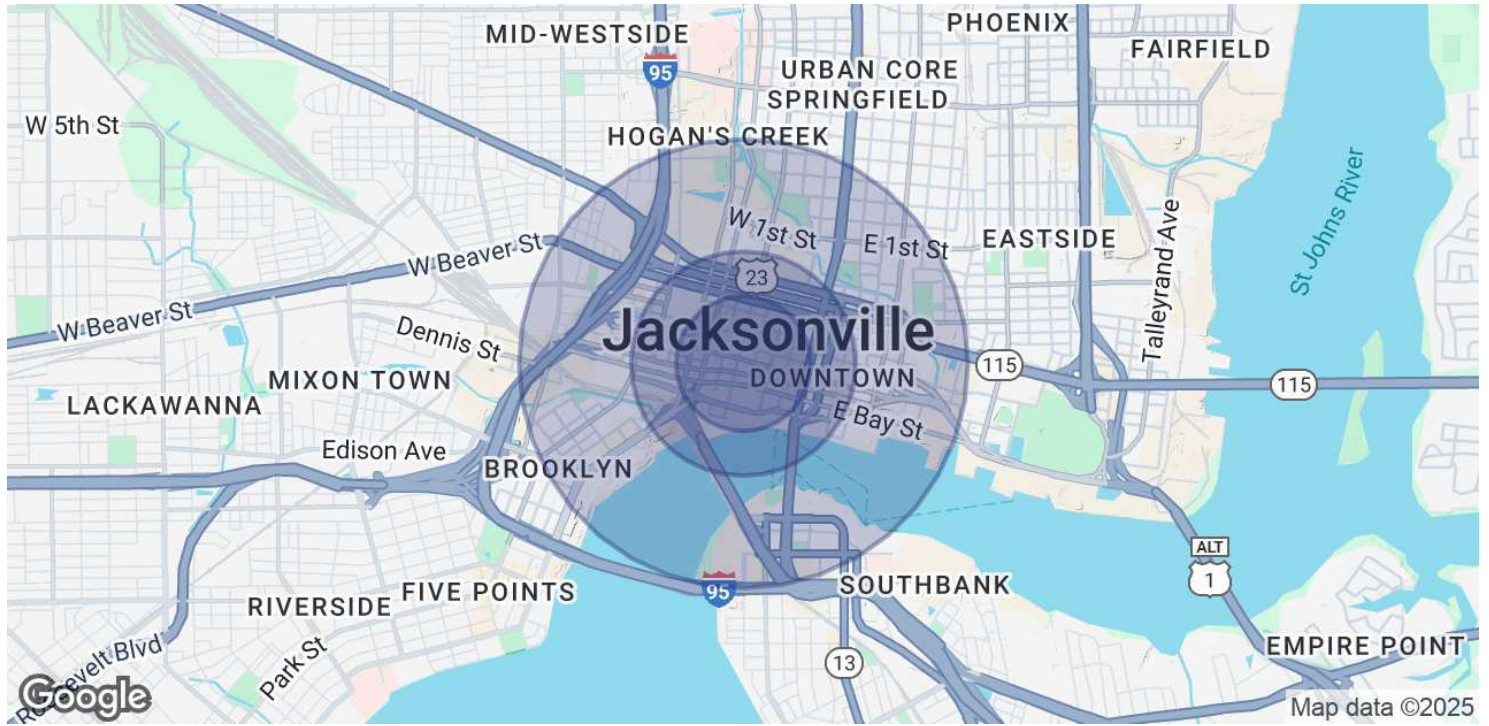
ROCHELLE PIERSALL
904.599.3480
rochelle@kinkadecommercial.com

AMANDA KINKADE
904.635.6376
amanda@kinkadecommercial.com

FOR LEASE

300 W ADAMS ST

Jacksonville, FL 32202



POPULATION	0.3 MILES	0.5 MILES	1 MILE
Total Population	619	1,939	11,450
Average Age	44	44	43
Average Age (Male)	43	43	41
Average Age (Female)	46	46	48
HOUSEHOLDS & INCOME	0.3 MILES	0.5 MILES	1 MILE
Total Households	402	1,209	4,902
# of Persons per HH	1.5	1.6	2.3
Average HH Income	\$54,952	\$52,166	\$44,856
Average House Value	\$321,675	\$306,809	\$230,586

Demographics data derived from AlphaMap

PRESENTED BY:

ROCHELLE PIERSALL
904.599.3480
rochelle@kinkadecommercial.com

AMANDA KINKADE
904.635.6376
amanda@kinkadecommercial.com