

# 24 CORPORATE PLAZA

NEWPORT BEACH



SUBLEASE AVAILABLE

## CREATIVE OFFICE SPACE

LEASED BY:

**RW** REDWOOD WEST

WELCOME TO

# 24 CORPORATE PLAZA

24 Corporate Plaza is a professional office building located in Newport Beach's premiere business, shopping and entertainment district. Situated minutes away from Fashion Island Mall, 24 corporate plaza draws a strong daytime population of business professionals, international tourists and affluent homeowners.





## PROPERTY SUMMARY

**Address:** 24 Corporate Plaza, Newport Beach, CA

**Number Of Stories:** Two (2)

**Total Building Area:** +/- 45,408 RSF

## THE AMENITIES

# The Features & Amenities



FEATURED LOCATION

JOEY RESTAURANTS

In the heart of Orange County's luxury shopping destination, Fashion Island, JOEY Newport Beach is an opulent oasis. The space features a gallery wall highlighting several hand-picked local artists and a unique Bocci light installation. Boasting 9,367 square feet, it includes an open patio which features a bar and retractable sections of roof, providing coverage and the ability to open to the day or evening sky. A large-scale outdoor fire pit offers guests an inviting lounge area, this space is the perfect place to enjoy a glass of well-deserved champagne fireside after a day of shopping.

## PROPERTY FEATURES

- Prestigious Newport Beach address adjacent to Newport Beach Library and Civic Event Center & CDM Plaza
- Ample and convenient surface parking & steps from public transportation
- Convenient access to 55, 73, PCH and Newport Harbor
- Approx a 5-min drive to Lido Marina Village and 4 miles to John Wayne Airport (SNA)

## WITHIN WALKING DISTANCE TO:

- Fashion Island Dining & Shopping
- Hospitality and Entertainment (Island Theater)
- Newport Beach Library & Civic Center
- Local Trails & Parks
- Corona Del Mar Plaza
- Corona Del Mar Village
- Balboa Island
- Bristol Farms
- Tommy Bahama
- Peet's Coffee
- Gulf Stream,
- Jack's Surfshop

AREA OVERVIEW

LIDO MARINA VILLAGE

HOAG HOSPITAL

BALBOA ISLAND

NEWPORT BEACH COUNTRY CLUB

NEWPORT CENTER

**24 CORPORATE PLAZA**  
±45,408 SF

CORONA DEL MAR PLAZA

NEWPORT BEACH CIVIC AND  
EVENT CENTER & PARKS

24 CORPORATE PLAZA

CREATIVE OFFICE SPACE SUBLET

CREATIVE OFFICE SPACE SUBLET

24 CORPORATE PLAZA

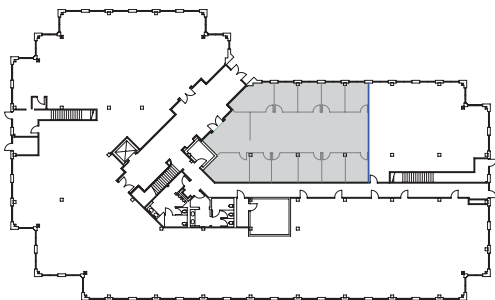
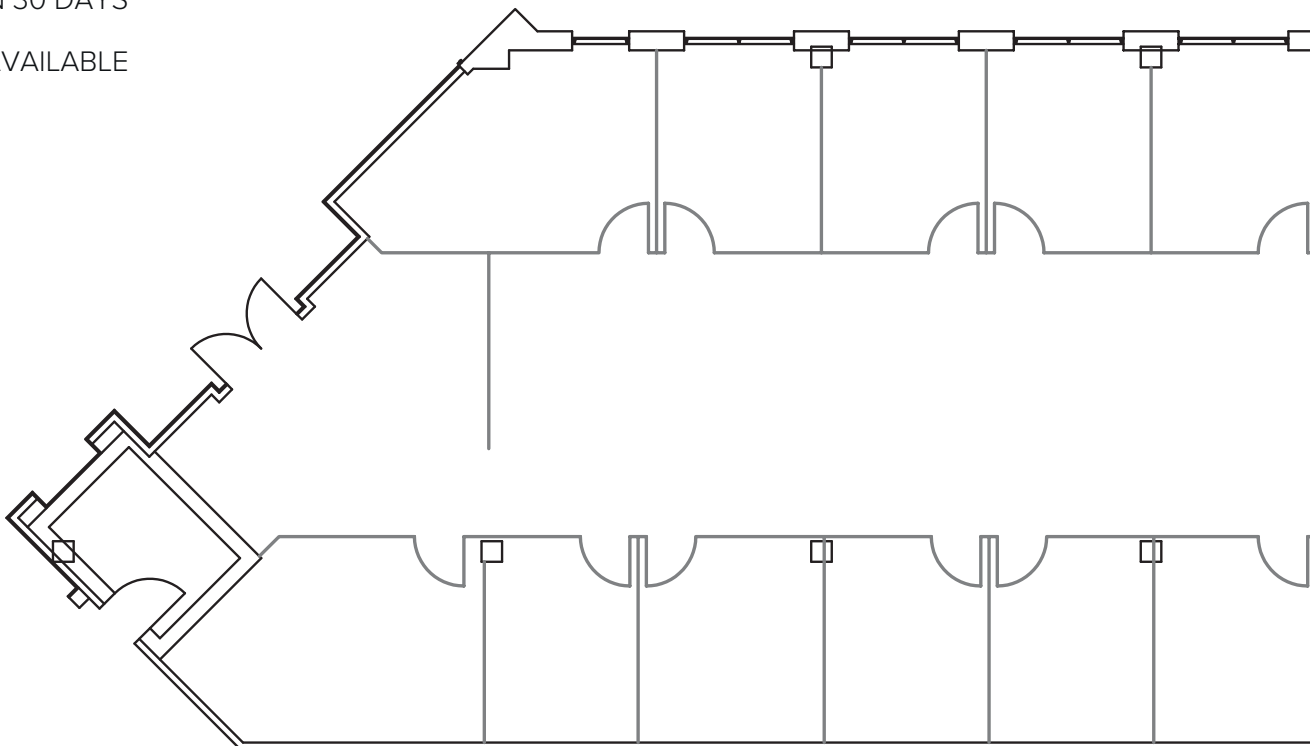


# Suite 180

+/- 3,143 SF

AVAILABLE IN 30 DAYS

FURNITURE AVAILABLE



# 24 CORPORATE PLAZA

NEWPORT BEACH

*For more information, please contact:*

**John Pomer**

949.945.2649

john@redwoodwest.com

Lic. #01440689

**Ben Gott**

949.945.2648

ben@redwoodwest.com

Lic. #01724507

**Christian Heffelman**

949.945.2645

christian@redwoodwest.com

Lic. #02101426

SUBLEASE AVAILABLE

## CREATIVE OFFICE SPACE

**BURNHAM**  
USA 

LEASED BY:

**RW** | REDWOOD  
WEST

The information contained in this document has been obtained from sources believed reliable. While Redwood West does not doubt its accuracy, Redwood West has not verified it and makes no guarantee, warranty or representation about it. It is your responsibility to independently confirm its accuracy and completeness. You and your advisors should conduct a careful, independent investigation of the property to determine your satisfaction to the suitability of the property for your needs.