

**Prime Owner-User Opportunity: 4,088± SF**  
**Versatile Retail, Business Services & R&D Space for Sale!**  
**Located 1 mile from SFO**



**777 San Bruno Ave E, San Bruno, CA**

**Rex Stanley**  
Associate  
+1 408 310 7161  
Rex@moinc.net  
Lic. #02223862

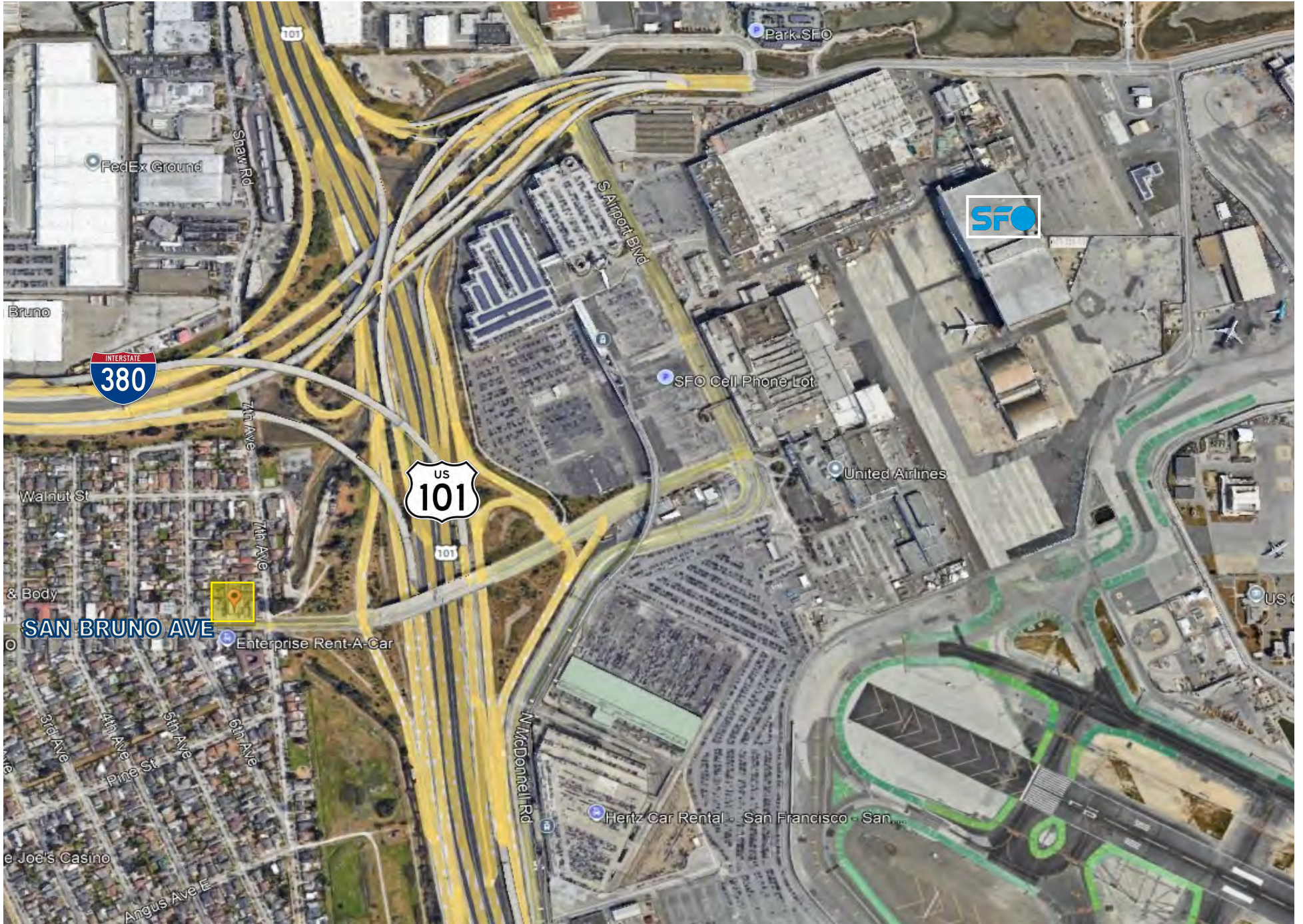
**David Taxin**  
Partner  
+1 408 966 5919  
dtaxin@moinc.net  
Lic. #00983163



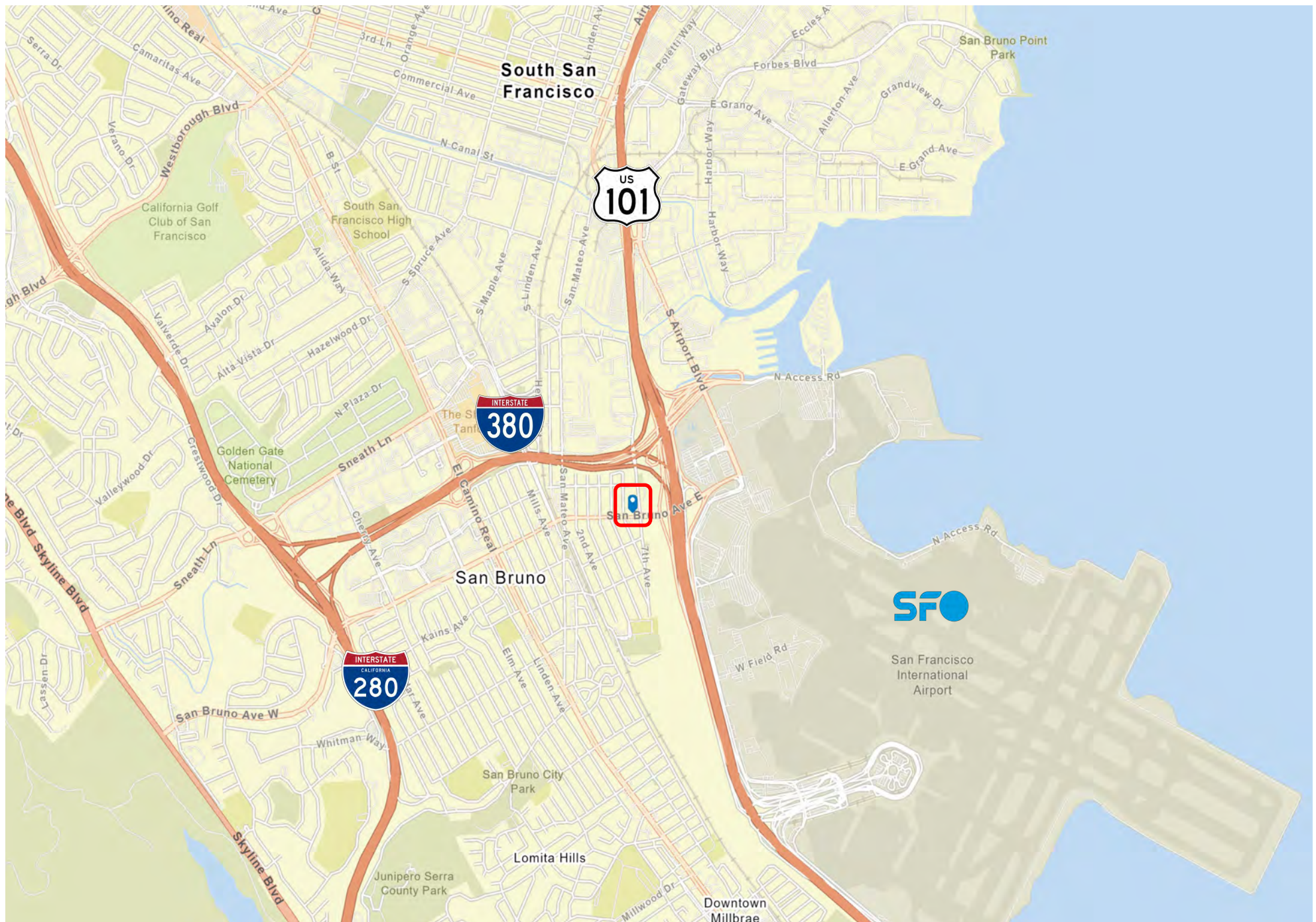
# PROPERTY OVERVIEW



- Sale Price: \$1,630,000/\$398.73 PSF
- Building: 4,088± SF
- Lot Size: 0.11± AC
- Building is vacant
- Perfect opportunity for Owner User with SBA loan
- Easy access to HWYS 101, 380 & SFO
- Prime location situated on very busy section of San Bruno Ave
- 2 roll-up doors
- Parking out front
- Monument sign located in high visibility location



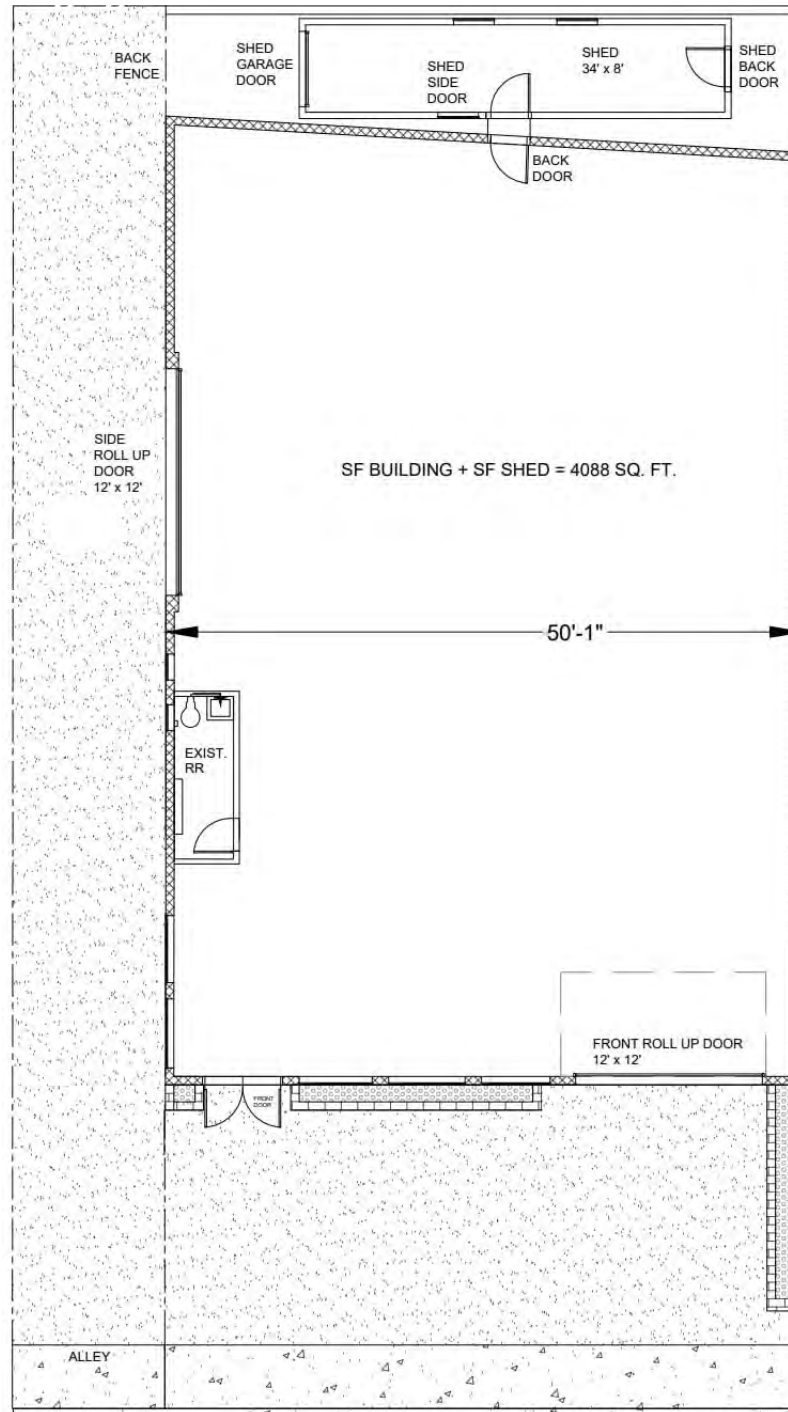
# SITE MAP



# PROPERTY PHOTOS



# FLOOR PLAN



\*C = Conditional Approved

\*P = Permitted

**Table 12.280-1: Permitted Land Uses in Mixed-Use Zoning Districts**

Land Uses	CBD	TOD-S	TOD-1	TOD-2	CC	MX-R
<b>Residential Uses</b>						
Duplex Homes, Mobile Home Parks, Single-Family Homes	-	-	-	-	-	-
Boardinghouse	C [1]	C	C	C	-	C
Live/Work	C	P	P	P	-	P
Multifamily Homes	P [1]	P	P	P		P
Residential Care Facilities, Small	P [1]	P	P	P	-	P
Residential Care Facilities, Large	P [1]	P	P	P	-	P
Accessory Dwelling Units	P	P	P	P	-	P
<b>Public and Quasi-Public Uses</b>						
Cemeteries	-	-	-	-	-	-
Colleges and Universities; Schools; and Trade and Vocational Schools	C [2]	C	C	C	-	-
Community Facilities, Public	C	C	-	C	C	C
Community Facilities, Private	C	C	-	C	-	C
Community Garden	P	P	P	P	P	P
Day Care Center	C	P	P	P	-	P
Emergency Shelters	-	P [7]	P [7]	P [7]	-	-
Home Day Care, Small	P [1]	P	P	P	-	P
Home Day Care, Large	P [1]	P	P	P	-	P
Hospitals	-	C	C	C	-	-

\*C = Conditional Approved

\*P = Permitted

**Table 12.280-1: Permitted Land Uses in Mixed-Use Zoning Districts**

Land Uses	CBD	TOD-S	TOD-1	TOD-2	CC	MX-R
Parks and Recreational Facilities (Public)	P	P	P	P	P	P
Parks and Recreational Facilities (Private)	C	C	C	C	C	C
Places of Worship	C	C	C	C	-	C
Public Safety Facilities	-	-	-	-	P	-
Public Maintenance Facilities	-	-	-	-	-	-
Social Services and Charitable Institutions	C	C	C	C	-	-
<b>Commercial Uses</b>						
Adult Businesses (12.84.040)	-	-	-	C [5]	-	-
Amusement Game Centers (12.84.060)	C	C	C	C	-	C
Banks & Other Financial	P	P	P	P	-	P
Bars, Nightclubs and Lounges	P	C [5]	C [5]	C [5]	-	C [5]
Business Services	P [2]	P	P	P	-	P
Cannabis Retailer	-	-	C [4]	C [4]	-	C [4]
Cardroom (12.84.050)	C [5]	-	-	C [5, 6]	-	C [5, 6]
Check Cashing Establishments	-	-	-	C	-	-
Commercial Recreation and Entertainment	C	C	C	C	-	C
Drive-Through Facilities	-	-	-	C [5]	-	C [5]
Firearm Dealers	-	-	-	-	-	-
Gas and Service Stations	-	-	-	C	-	-
Health and Exercise Clubs	C	C	C	C	-	C
Hotels and Motels	C	P	P	P	-	P
Office	P [2]	P	P	P	P	P

\*C = Conditional Approved

\*P = Permitted

**Table 12.280-1: Permitted Land Uses in Mixed-Use Zoning Districts**

Land Uses	CBD	TOD-S	TOD-1	TOD-2	CC	MX-R
Outdoor Dining	P	P	P	P	-	P
Personal Services, Downtown Focus	P	P	P	P	-	P
Personal Services, Instructional Focus	C	C	P	P	-	P
Personal Services, General	-	C	P	P	-	P
Personal Storage	-	-	-	-	-	-
Pet Boarding Overnight	-	-	C	C	-	-
Pet Day Care Facility	C	C	P	P	-	-
Research and Development	P [2]	P	P	P	-	P
Retail Sales and Services	P [3]	P	P	P	-	C
Restaurants	P [3]	P	P	P	-	P
Vehicle Sales and Rental	-	-	-	C	-	-
Vehicle Repair and Maintenance	-	-	-	-	-	-
<b>Industrial Uses</b>						
Construction, Maintenance, and Repair Services; Heavy Equipment Sales and Rental; Lumberyards; Manufacturing and Processing (Light and General); Warehousing, Wholesaling, and Distribution	-	-	-	-	-	-
<b>Transportation, Communication, and Utilities Uses</b>						
Alternative Energy Structures	C	C	C	C	C	C
Ground Transportation Provider	-	-	-	-	-	-
Parking Lots, Commercial	-	-	-	-	-	-
Parking Structures, Commercial	C	C	C	C	-	C

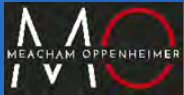
\*C = Conditional Approved

\*P = Permitted

**Table 12.280-1: Permitted Land Uses in Mixed-Use Zoning Districts**

Land Uses	CBD	TOD-S	TOD-1	TOD-2	CC	MX-R
<b>Transportation, Communication, and Utilities Uses</b>						
Alternative Energy Structures	C	C	C	C	C	C
Ground Transportation Provider	-	-	-	-	-	-
Parking Lots, Commercial	-	-	-	-	-	-
Parking Structures, Commercial	C	C	C	C	-	C
Recycling Collection Facilities	-	C	C	C	-	C
Recycling Processing Facilities	-	-	-	-	-	-
Transportation Terminals	-	P	-	-	-	-
Utilities, Major	C	C	C	C	C	C
Utilities, Minor	P	P	P	P	P	P

## POTENTIAL USES



- Retail Sales & Services
- Research & Development
- Business Services
- Day Care Center
- Office
- Parking Garage



**777 San Bruno Ave E, San Bruno, CA**

**Rex Stanley**  
Associate  
+1 (408)310-7161  
Rex@moinc.net  
Lic. #02223862

**David Taxin**  
Partner  
+1 (408)966-5919  
dtaxin@moinc.net  
Lic. #00983163

MEACHAM/OPPENHEIMER, INC.  
8 N San Pedro St. #300  
San Jose, CA 95110  
Tel. 408.378.5900  
www.moinc.net

