

INDUSTRIAL FOR LEASE

2241 Madera Road, Simi Valley, CA 93065

**\$1.00/SF
PER MONTH
INTRO RATE!**
**Call
Broker!**

14,080 SF INDUSTRIAL BUILDING AVAILABLE FOR LEASE

PROPERTY HIGHLIGHTS

- High Visibility and Main Street Frontage
- Excellent Multi-Purpose Facility
- Flexible Zoning, Business Friendly City
- 400 Amps/208 Volt/3 Phase
- \$1.29 SF/Mo with Low Operating Expenses

For More Information
Please Contact:

JOE JUSKO

818.223.4397

jjusko@lee-re.com

www.jjusko.com

DRE #00875413

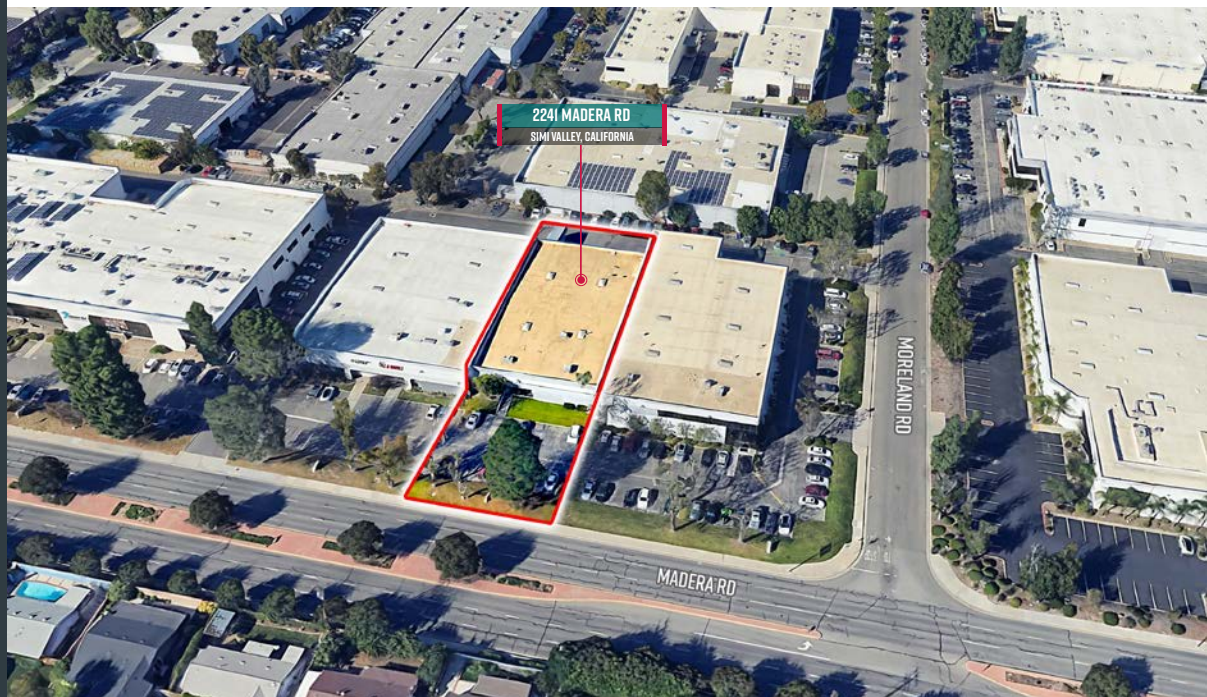
www.leewlv.com

Lee & Associates - LA North/Ventura, Inc.
Corporate ID #01191898
A Member of the Lee & Associates
Group of Companies
5707 Corsa Ave, Suite 200
Westlake Village, CA 91362

**LEE &
ASSOCIATES**

COMMERCIAL REAL ESTATE SERVICES

No warranty or representation is made to the accuracy of the foregoing information. Terms of sale or lease and availability are subject to change or withdrawal without notice.



INDUSTRIAL FOR LEASE

2241 Madera Road, Simi Valley, CA 93065



For More Information
Please Contact:

JOE JUSKO

818.223.4397

jjusko@lee-re.com

www.jjusko.com

DRE #00875413

www.leewlv.com

Lee & Associates - LA North/Ventura, Inc.
Corporate ID #01191898
A Member of the Lee & Associates
Group of Companies
5707 Corsa Ave, Suite 200
Westlake Village, CA 91362

LEE & ASSOCIATES

COMMERCIAL REAL ESTATE SERVICES

No warranty or representation is made to the accuracy of the foregoing information. Terms of sale or lease and availability are subject to change or withdrawal without notice.

