

Compton

Farringdon

The Waterman
151 Farringdon Road
EC1R 3AF

Sensational redevelopment of former Victorian Warehouse, offering over 70,000 Sq Ft of high quality workspace in the heart of Farringdon

For Rent

5,622 to 70,803 ft²

020 7101 2020
compton.london



Compton

Farringdon

The Waterman
151 Farringdon Road
EC1R 3AF

Sensational redevelopment of former Victorian Warehouse, offering over 70,000 Sq Ft of high quality workspace in the heart of Farringdon

For Rent

5,622 to 70,803 ft²



Location

Step outside the wonder of The Waterman and you'll find even more excitement and entertainment. From bars and restaurant along Exmouth Market to peaceful pubs, picnic spots by Clerkenwell Green, there are green spaces, gardens, and gyms galore to make every day a good day at this office.

Farringdon, the only transport hub serviced by the Elizabeth Line, London Underground and Thameslink is just five minutes walk. So whether it's a short dash across London, or you're coming in from further afield, the countless connections and key stations in walking distance mean you're perfectly placed and never far away.

Compton

Farringdon

The Waterman
151 Farringdon Road
EC1R 3AF

Sensational redevelopment of former Victorian Warehouse, offering over 70,000 Sq Ft of high quality workspace in the heart of Farringdon

For Rent

5,622 to 70,803 ft²



Compton

Farringdon

The Waterman
151 Farringdon Road
EC1R 3AF

Sensational redevelopment of former Victorian Warehouse, offering over 70,000 Sq Ft of high quality workspace in the heart of Farringdon

For Rent

5,622 to 70,803 ft²



Compton

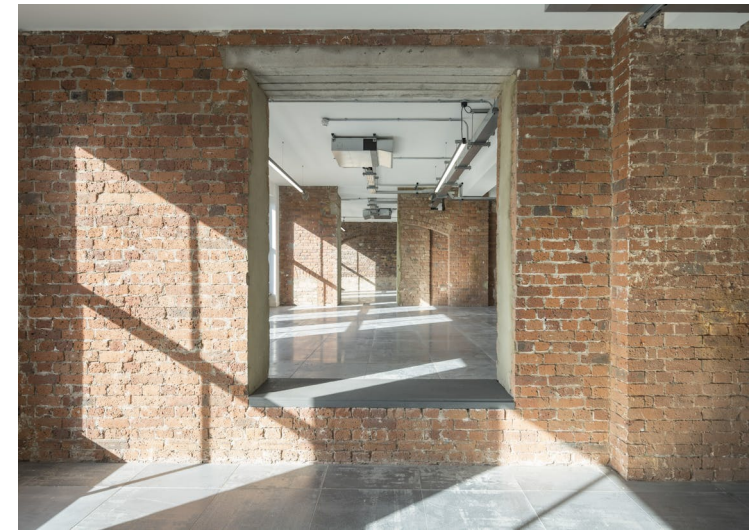
Farringdon

The Waterman
151 Farringdon Road
EC1R 3AF

Sensational redevelopment of former Victorian Warehouse, offering over 70,000 Sq Ft of high quality workspace in the heart of Farringdon

For Rent

5,622 to 70,803 ft²



Compton

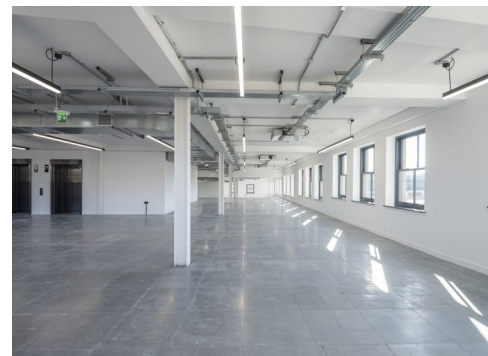
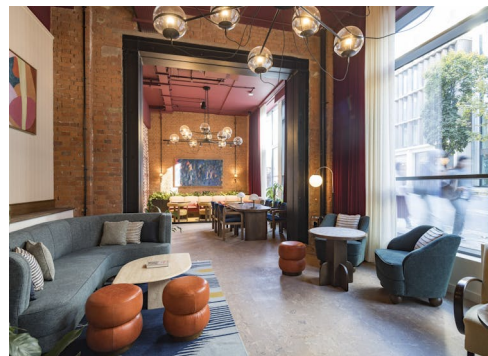
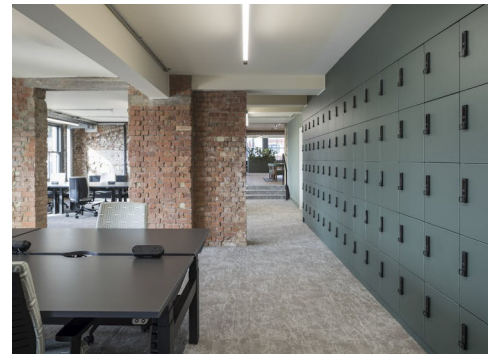
Farringdon

The Waterman
151 Farringdon Road
EC1R 3AF

Sensational redevelopment of former Victorian Warehouse, offering over 70,000 Sq Ft of high quality workspace in the heart of Farringdon

For Rent

5,622 to 70,803 ft²



Compton

Farringdon

The Waterman
151 Farringdon Road
EC1R 3AF

Sensational redevelopment of former Victorian Warehouse, offering over 70,000 Sq Ft of high quality workspace in the heart of Farringdon

For Rent

5,622 to 70,803 ft²

Amenities

- Former Victorian Warehouse
- Located on island site in Farringdon
- 4,000 Sq Ft communal reception lobby with business lounge and meeting room suites
- 3,000 Sq Ft communal roof terrace
- 6 private roof terraces throughout the building
- High quality refurbishment
- Air-conditioning
- Modern suspended lighting
- Net zero development powered by renewable energy
- Reduced carbon usage by retaining the original structure
- 40,000 penny-farthings' worth of carbon (700 tonnes) saved through use of alternative materials
- Bats, birds, bees, and at least 27 wildflower species introduced to the new green roof
- Newly installed windows will offset embodied carbon from their manufacture within 6 years
- All new MEP
- EPC A
- BREEAM Excellent New build
- BREEAM Excellent Refurbishment
- 92 cycle spaces and best-in-class end of trip facilities

Description

Introducing The Waterman. Designed by Alfred Waterman, refined by Fathom Architects.

Nestled in the heart of London's vibrant Farringdon and just a hop, skip and jump away (5 minutes, to be exact) from the Elizabeth line, The Waterman is a Victorian warehouse that blends old-world charm with modern amenities.

Spanning 70,000 sq ft with 10,000 sq ft floorplates, this exquisite office development is a sanctuary where inspiration will truly thrive.

Every inch of The Waterman resonates with timeless elegance and resplendent charm. Immerse yourself in opulent interiors adorned with exquisite details.

Compton

Farringdon

The Waterman
151 Farringdon Road
EC1R 3AF

Sensational redevelopment of former Victorian Warehouse, offering over 70,000 Sq Ft of high quality workspace in the heart of Farringdon

For Rent

5,622 to 70,803 ft²

Content

Watch the film



Watch the film



View on Website



Compton

Farringdon

The Waterman
151 Farringdon Road
EC1R 3AF

Sensational redevelopment of former Victorian Warehouse, offering over 70,000 Sq Ft of high quality workspace in the heart of Farringdon

For Rent

5,622 to 70,803 ft²

Floor Areas & Outgoings

The accommodation comprises the following areas:

Name	sq ft	sq m	Availability
Unit - Communal Roof Terrace	3,388	314.76	Occupied
6th	6,629	615.85	Available
5th	9,278	861.95	Available
4th - Fully Fitted	9,630	894.66	Available
3rd	9,809	911.29	Available
2nd	10,051	933.77	Available
1st	10,391	965.36	Available
Ground - Office / Showroom 1	5,921	550.08	Available
Ground - Office / Showroom 2	5,622	522.30	Available
Ground - Reception / Business Lounge	3,472	322.56	Occupied

Compton

Contact Us

All appointments to view must be arranged via sole agents, Compton, through —

Jake Kinsler
jk@compton.london
07840 638668

Shaun Simons
ss@compton.london
07788 423131

