

# Because every working day matters

**Bevis Marks**

6 Bevis Marks, London EC3V 7BA

**LANDMARK**

flexible workspace

the space

The views over London from our Bevis Marks offices on the 12th floor and a stunning rooftop terrace are two of the building's standout features, but there's plenty more to entice business leaders and staff alike.

The workspace includes offices, meeting rooms and a large coworking Club Space perfect for hybrid or flexible working. It is close to the Lloyds building, making it popular with underwriters, brokers and finance and attracting technology, recruitment and construction companies.

Clients that operate outside office hours, such as forex trading, find the 24/7 access and building security particularly helpful.



# Welcome to Bevis Marks



*"I'm Agnieszka, your Client Experience Manager at Bevis Marks. We can't wait to welcome you to our beautiful offices, meeting rooms, and flexible Coworking Space at this convenient location. All the team are excited about helping your business make the most of our organised and productive workspace. Welcome to Landmark."*

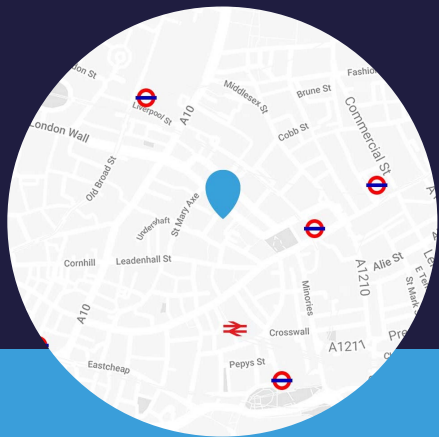
[View the video tour](#)

*"Great workspaces in the centre of London. Landmark offices that will impress your guests with a great customer service oriented central reception."*

**Kim, Landmark client at Bevis Marks**



# Bevis Marks is one of 36 prime locations across London and the UK.



6 Bevis Marks,  
London EC3A 7BA



Bike  
facilities



Shower  
facilities



Aldgate  
4 minutes' walk



Bank  
10 minutes' walk



Fenchurch Street  
7 minutes' walk



Liverpool Street  
5 minutes' walk





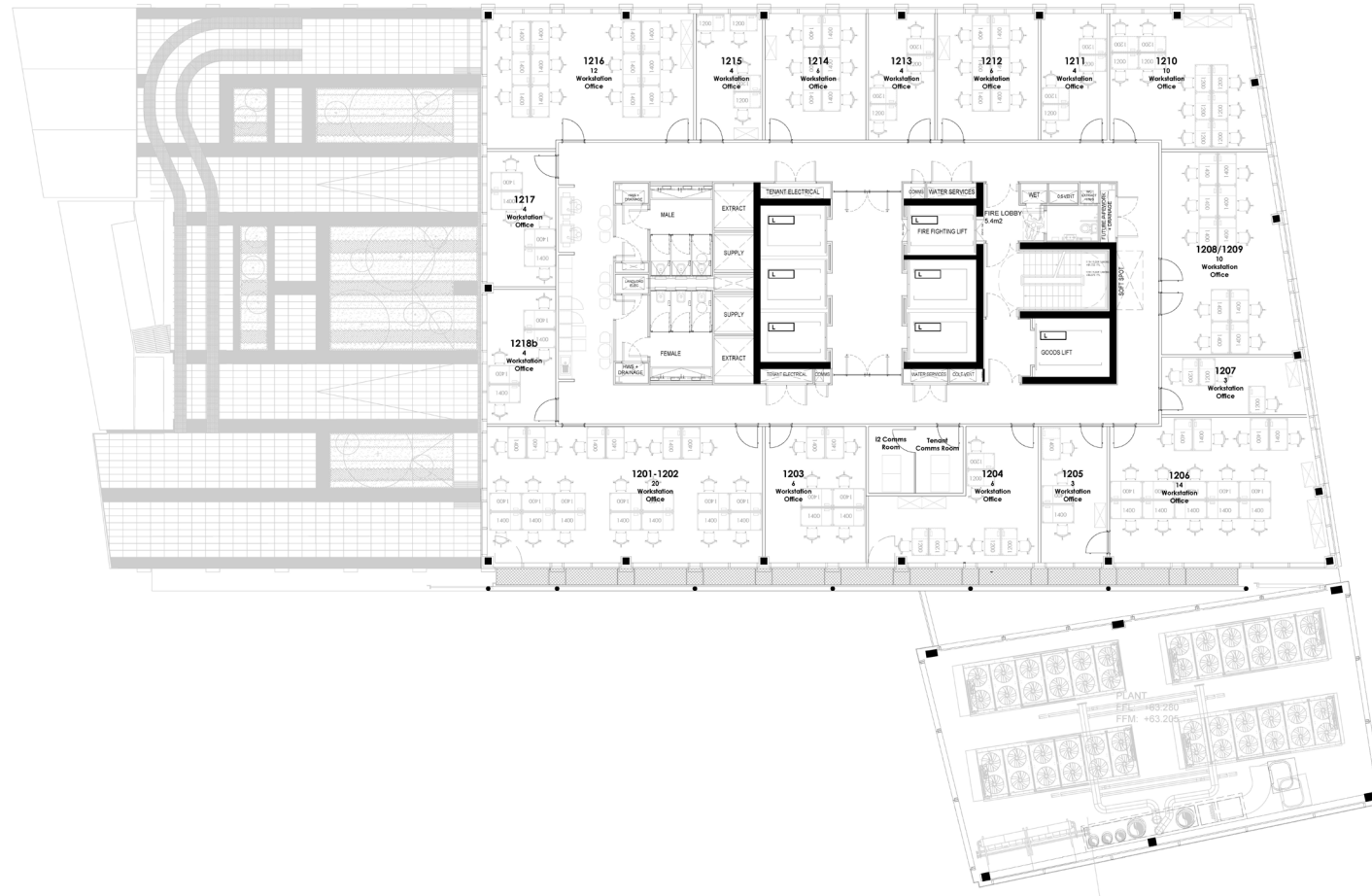
# Indicative Floor Plans

- BREEAM Excellent rated building
- 2 bookable meeting rooms
- Views of Tower Bridge, Canary Wharf, The City and Bishopsgate
- Next-door to the Cherkin

## LANDMARK

flexible workspace

## 6 Bevis Marks Twelfth Floor





## 2 Bookable Meeting Rooms

### Middlesex Room

Capacity: 1-6  
Price per hour: £52  
Price per half day: £208  
Price per day: £312

Disabled access  
Natural daylight  
TV screen  
Tea and coffee included

### Bushfield Room

Capacity: 1-14  
Price per hour: £112  
Price per half day: £448  
Price per day: £672

Disabled access  
Natural daylight  
TV screen  
Tea and coffee included



# About the Building

Bevis Marks is a BREEAM Excellent rated building providing 15 floors of offices. Construction on the building began in 2012 and finished in 2014, replacing a building called Lockton House.

The architects and developers took sustainability seriously, including a striking rooftop garden on the 16th floor, a landscaped courtyard, cyclist facilities, and showers with a towel service.

Our hospitality team have watched many businesses on their growth journey, upgrading their office every so often until they reach the 12th floor. The flexibility of the workspace makes expansion easier to do than traditional space.

The team also host client events in the impressive rooftop garden, where watching the sunset on a beautiful sunny day is a highlight. They can't promise excellent weather, but they can guarantee clients a bright, friendly service that extends to knowing everybody's name and asking for feedback on how they can improve continuously.





## Get in touch

Dario Rolandi

Area Director, London

0203 440 5000

[enquiries@landmarkspace.co.uk](mailto:enquiries@landmarkspace.co.uk)

[landmarkspace.co.uk](https://landmarkspace.co.uk)