

# RETAIL SPACES FOR LEASE

PRIDE CENTER - 22914 & 22950 VICTORY BOULEVARD  
WOODLAND HILLS/WEST HILLS, CA 91367



JUNIOR ANCHOR  
PRIDE CENTER - 22914 VICTORY BOULEVARD  
WOODLAND HILLS, CA 91367

**28,000 SF**

HIGHT PROFILE END CAP  
PRIDE CENTER - 22950 VICTORY BOULEVARD  
WOODLAND HILLS, CA 91367

**11,707 SF**



For Leasing Information, please contact:

## **LESLIE J. MAYER**

Executive Managing Director

Retail Services

CA License 00862783

10520 Constellation Blvd, #2200

Los Angeles, CA 90067

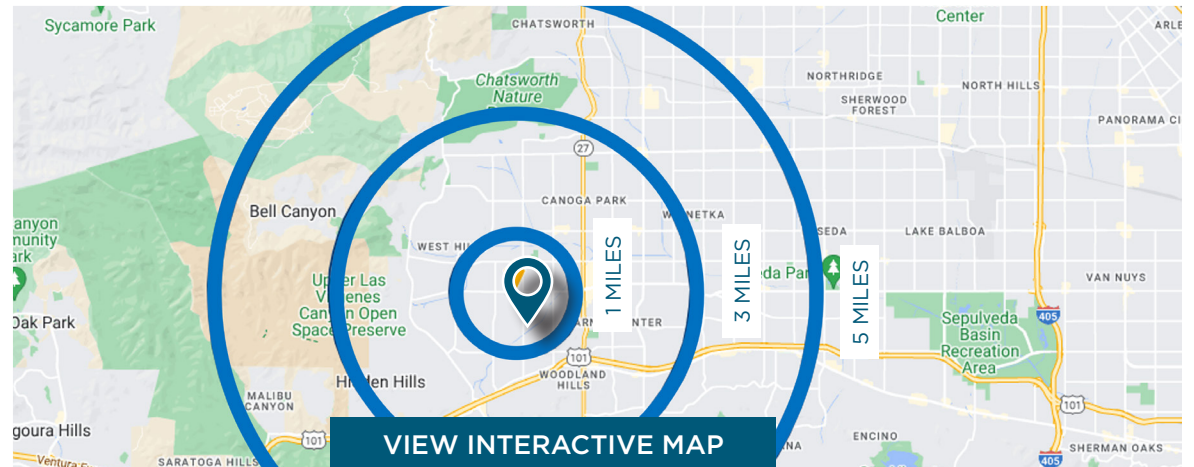
Direct: +1 310 595 2223

leslie.mayer@cushwake.com



# PROPERTY HIGHLIGHTS

- Former Joann's and Tuesday Morning Stores
- Highly Visible Jr. Anchor and End-Cap Space
- Prominent Signage Parapets & Pylon Signage
- Abundant Parking
- Excellent Co-Tenancy and Regional Draw across from Fallbrook Shopping Center
- Available Now



## SOUTHERN CALIFORNIA RETAIL SERVICES

LESLIE J. MAYER  
leslie.mayer@cushwake.com  
+1 310 595 2223  
CA Lic. #00862783



## 22950 EXTERIOR PICTURES



### SOUTHERN CALIFORNIA RETAIL SERVICES

LESLIE J. MAYER  
leslie.mayer@cushwake.com  
+1 310 595 2223  
CA Lic. #00862783



# 22950 INTERIOR PICTURES



## SOUTHERN CALIFORNIA RETAIL SERVICES

LESLIE J. MAYER  
leslie.mayer@cushwake.com  
+1 310 595 2223  
CA Lic. #00862783



# AREA MAP

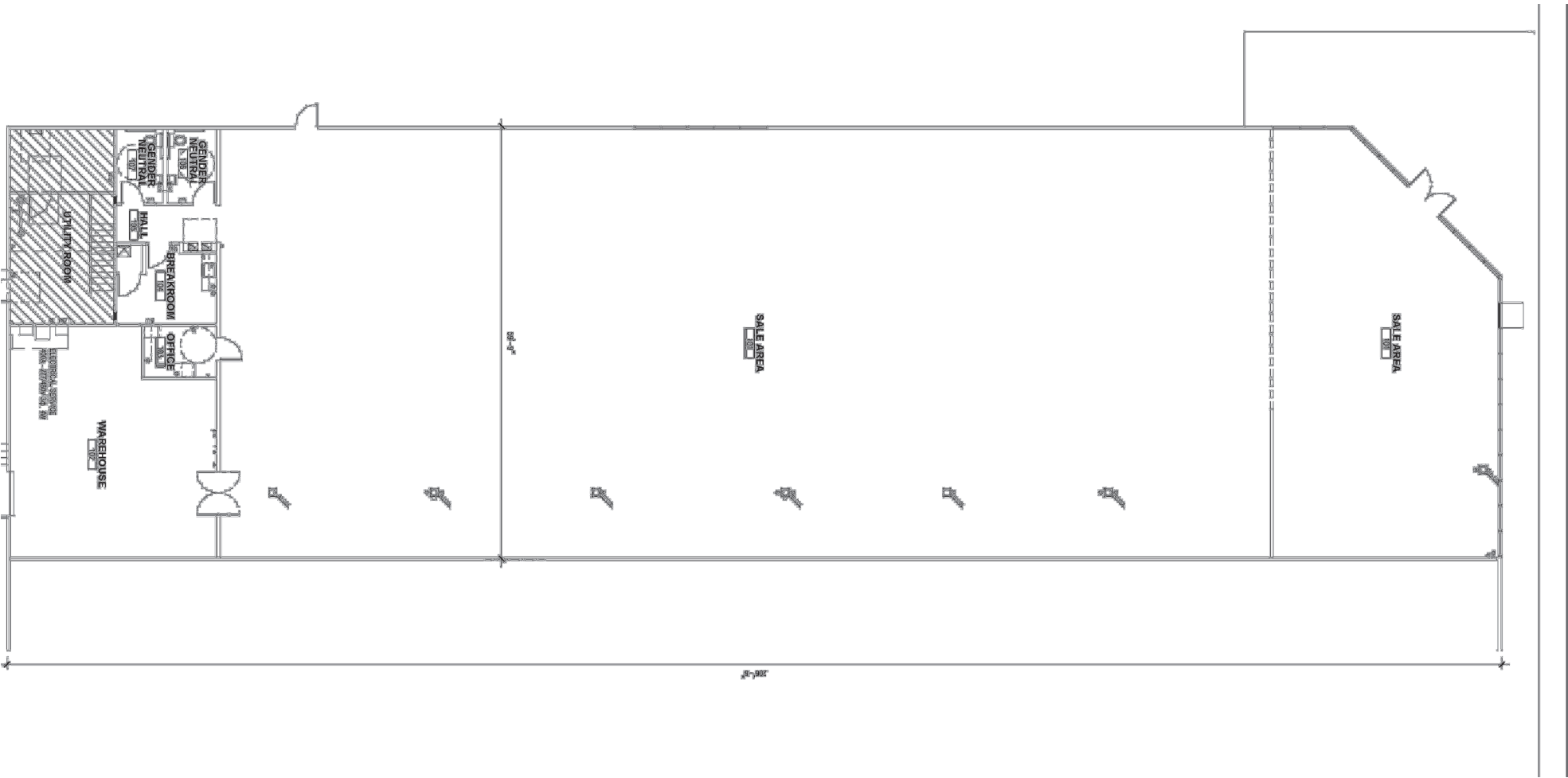


## SOUTHERN CALIFORNIA RETAIL SERVICES

LESLIE J. MAYER  
 leslie.mayer@cushwake.com  
 +1 310 595 2223  
 CA Lic. #00862783



# 22950 LEASABLE FLOOR AREA

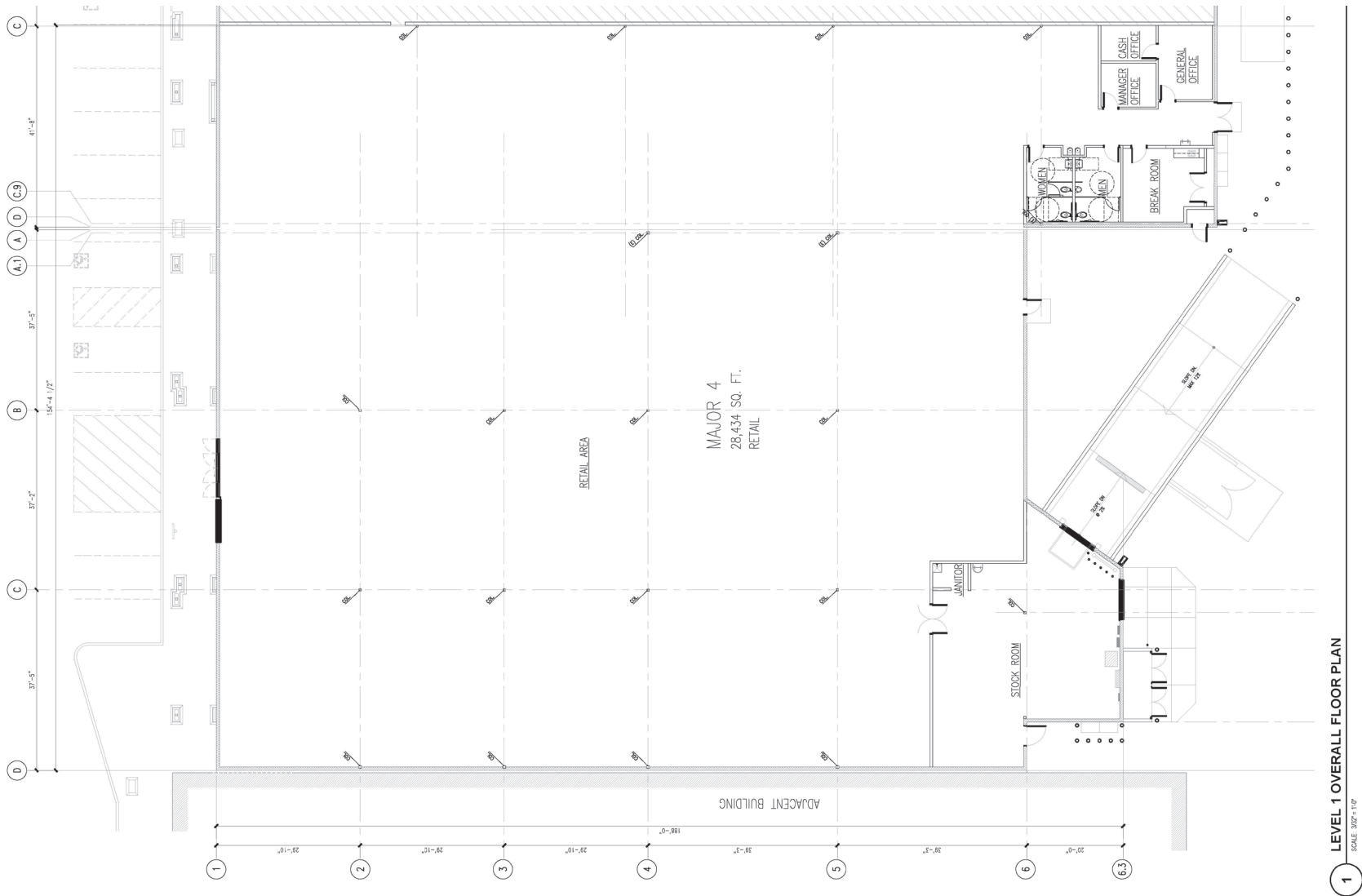


## SOUTHERN CALIFORNIA RETAIL SERVICES

LESLIE J. MAYER  
leslie.mayer@cushwake.com  
+1 310 595 2223  
CA Lic. #00862783



# 22914 LEASABLE FLOOR AREA

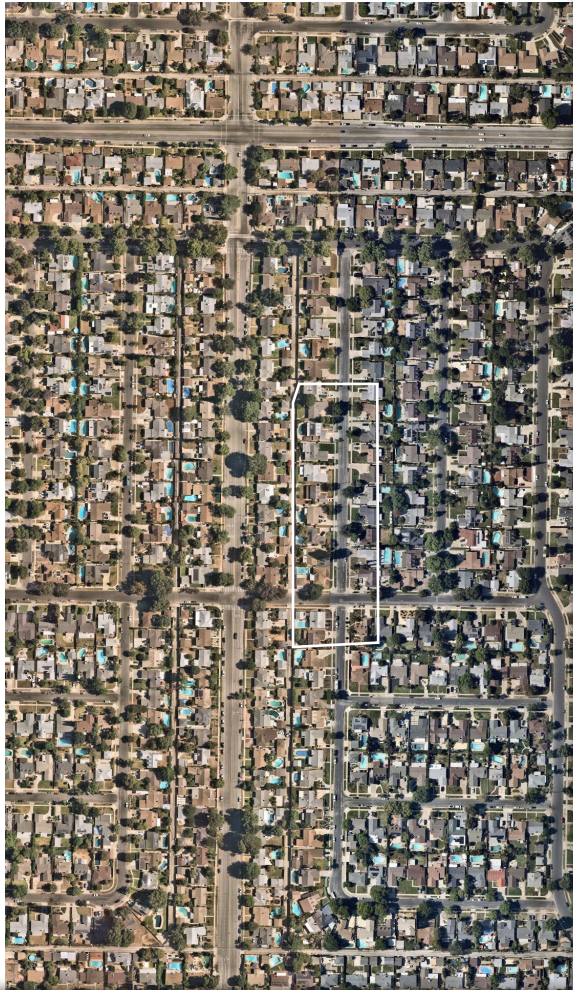


1 LEVEL 1 OVERALL FLOOR PLAN  
SCALE 3/32" = 1'-0"

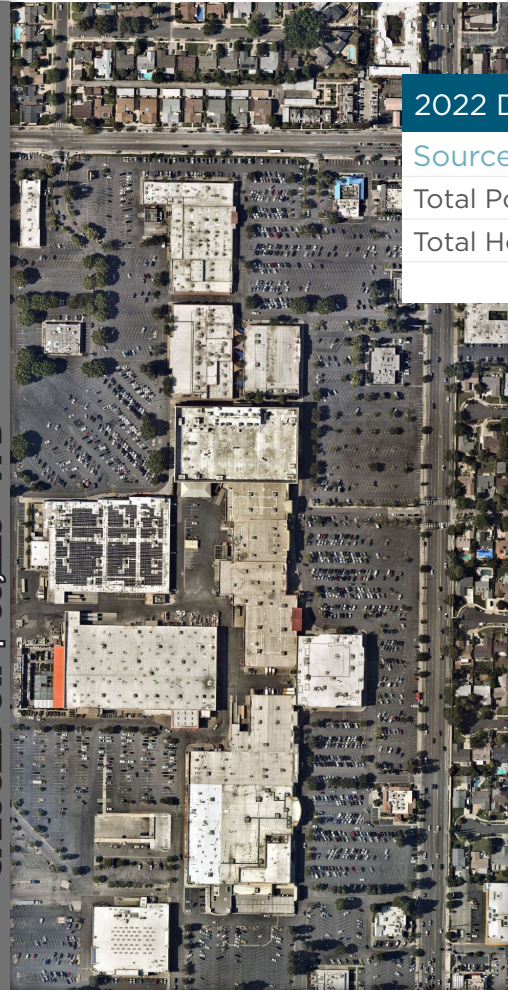
## SOUTHERN CALIFORNIA RETAIL SERVICES

LESLIE J. MAYER  
leslie.mayer@cushwake.com  
+1 310 595 2223  
CA Lic. #00862783



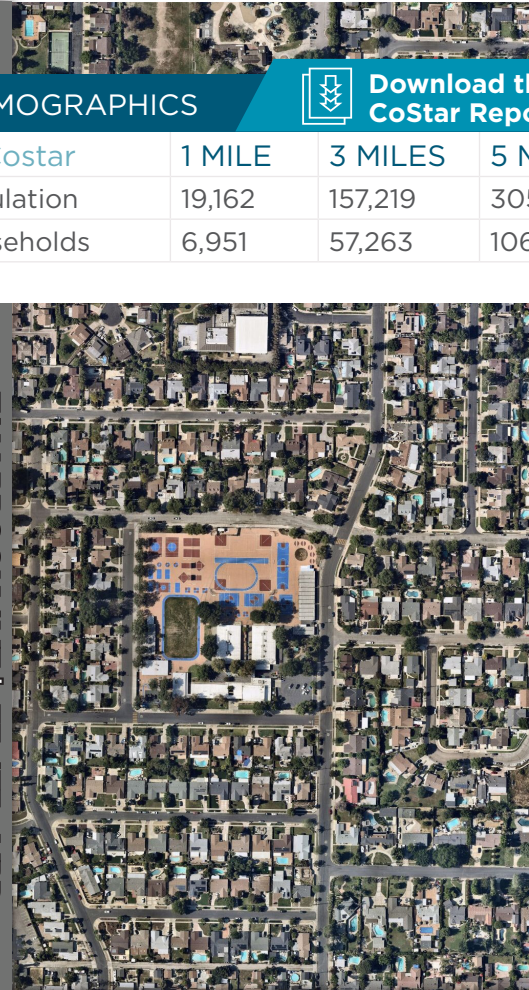
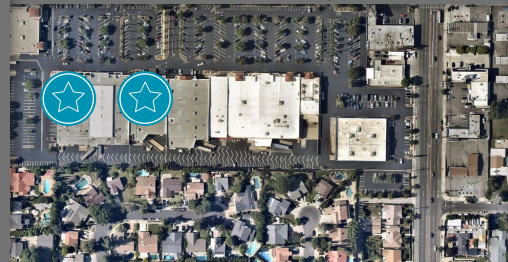


S. EUCLID ST. | 39,225+ VPD



FALLBROOK AVE | 33,475+ VPD

VICTORY BLVD | 19,569+ VPD



2022 DEMOGRAPHICS



Download the CoStar Report

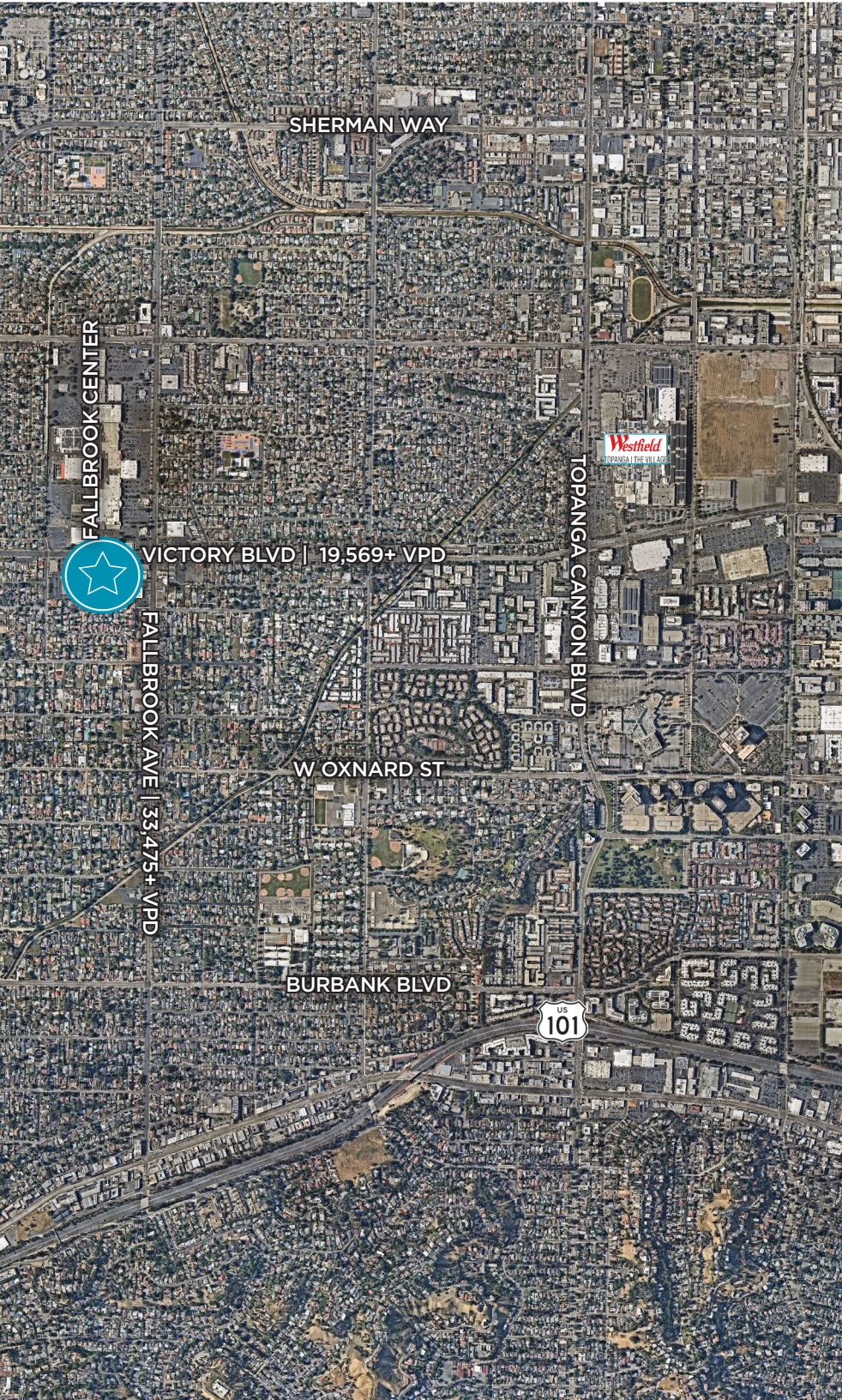
Source: Costar	1 MILE	3 MILES	5 MILES
Total Population	19,162	157,219	305,170
Total Households	6,951	57,263	106,807

SOUTHERN CALIFORNIA RETAIL SERVICES

LESLIE J. MAYER  
 leslie.mayer@cushwake.com  
 +1 310 595 2223  
 CA Lic. #00862783







**22950 VICTORY BLVD**  
WOODLAND HILLS, CA 91367

**Leslie J. Mayer**  
*Executive Managing Director*

Retail Services  
CA License 00862783  
10520 Constellation Blvd, #2200  
Los Angeles, CA 90067  
Direct: +1 310 595 2223  
Mobile: +1 310 600 4118  
[leslie.mayer@cushwake.com](mailto:leslie.mayer@cushwake.com)



**CUSHMAN &  
WAKEFIELD**

**SOUTHERN CALIFORNIA  
RETAIL SERVICES**

10520 Constellation Boulevard, Suite 2200 / Los Angeles, CA 90067 | USA / [cushmanwakefield.com](http://cushmanwakefield.com)

©2023 Cushman & Wakefield. All rights reserved. The material in this presentation has been prepared solely for information purposes, and is strictly confidential. Any disclosure, use, copying or circulation of this presentation (or the information contained within it) is strictly prohibited, unless you have obtained Cushman & Wakefield's prior written consent. The views expressed in this presentation are the views of the author and do not necessarily reflect the views of Cushman & Wakefield. Neither this presentation nor any part of it shall form the basis of, or be relied upon in connection with any offer, or act as an inducement to enter into any contract or commitment whatsoever. NO REPRESENTATION OR WARRANTY IS GIVEN, EXPRESS OR IMPLIED, AS TO THE ACCURACY OF THE INFORMATION CONTAINED WITHIN THIS PRESENTATION, AND CUSHMAN & WAKEFIELD IS UNDER NO OBLIGATION TO SUBSEQUENTLY CORRECT IT IN THE EVENT OF ERRORS.