

233 SOUTH 3RD STREET

BETWEEN ROEBLING & HAVEMEYER STREETS | WILLIAMSBURG

0505



RETAIL SPACE
FOR LEASE

Akram Rashed Jordan Raphael
946.897.4792 516.776.4771
akrashed@ksr.com jrph@ksr.com



233 SOUTH 3RD STREET

BETWEEN ROEBLING & HAVEMEYER STREETS | WILLIAMSBURG

PROPERTY DETAILS

SIZE: 1,500 SF Ground Floor
+ Basement

FRONTAGE: 16'

CEILING HEIGHT: 10'

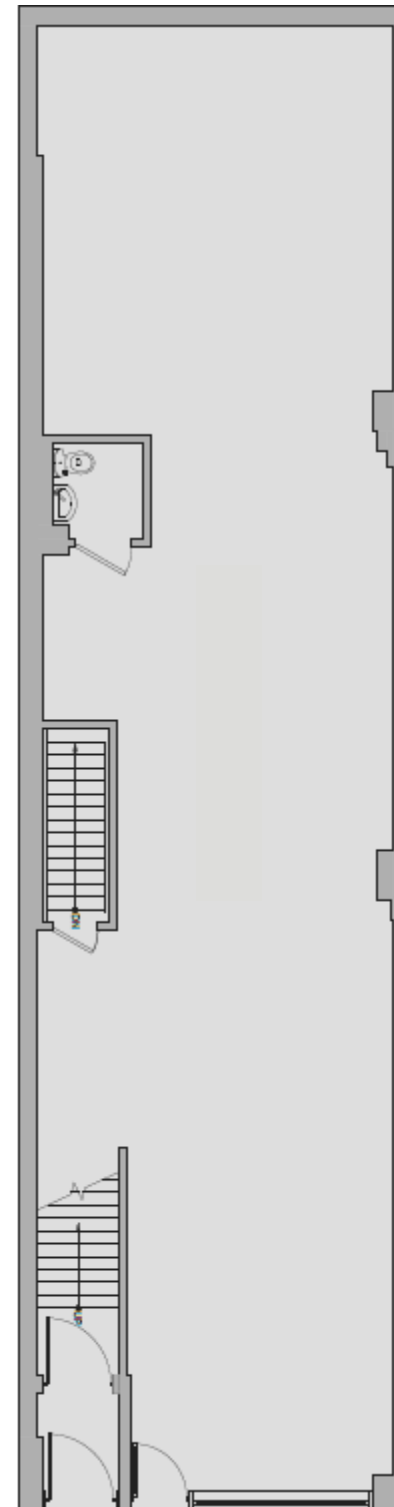
POSSESSION: Immediate

ASKING RENT: Upon Request

TRANSPORTATION: 

HIGHLIGHTS

- Vented for cooking
- High foot traffic area
- Dense residential neighborhood
- Neighboring tenants include:
Dunkin', McDonald's, Pies & Thighs, Blink Fitness, Peter Luger Steakhouse & many more!



FLOOR PLANS:
GROUND FLOOR

SOUTH 3RD STREET

233 SOUTH 3RD STREET

BETWEEN ROEBLING & HAVEMEYER STREETS | WILLIAMSBURG

AREA MAP:



233 SOUTH 3RD STREET

BETWEEN ROEBLING & HAVEMEYER STREETS | WILLIAMSBURG

FOR MORE INFORMATION,
PLEASE CONTACT:

JORDAN RAPHAN

516.776.4771 | JRaphan@ksrny.com

AKRAM MOZEB

646.897.4792 | AMozeb@ksrny.com



1385 Broadway, 22nd Floor | New York, NY 10018
212.417.9217

ksrny.com