

Ocean Plaza

2615 PACIFIC
COAST
HIGHWAY

OCEAN PLAZA

OFFICE SUITES FOR LEASE

2615 Pacific Coast Highway, Hermosa Beach, CA

CBRE



Property Highlights



Desirable Hermosa Beach location



2 minutes to the ocean



Walking distance to numerous amenities



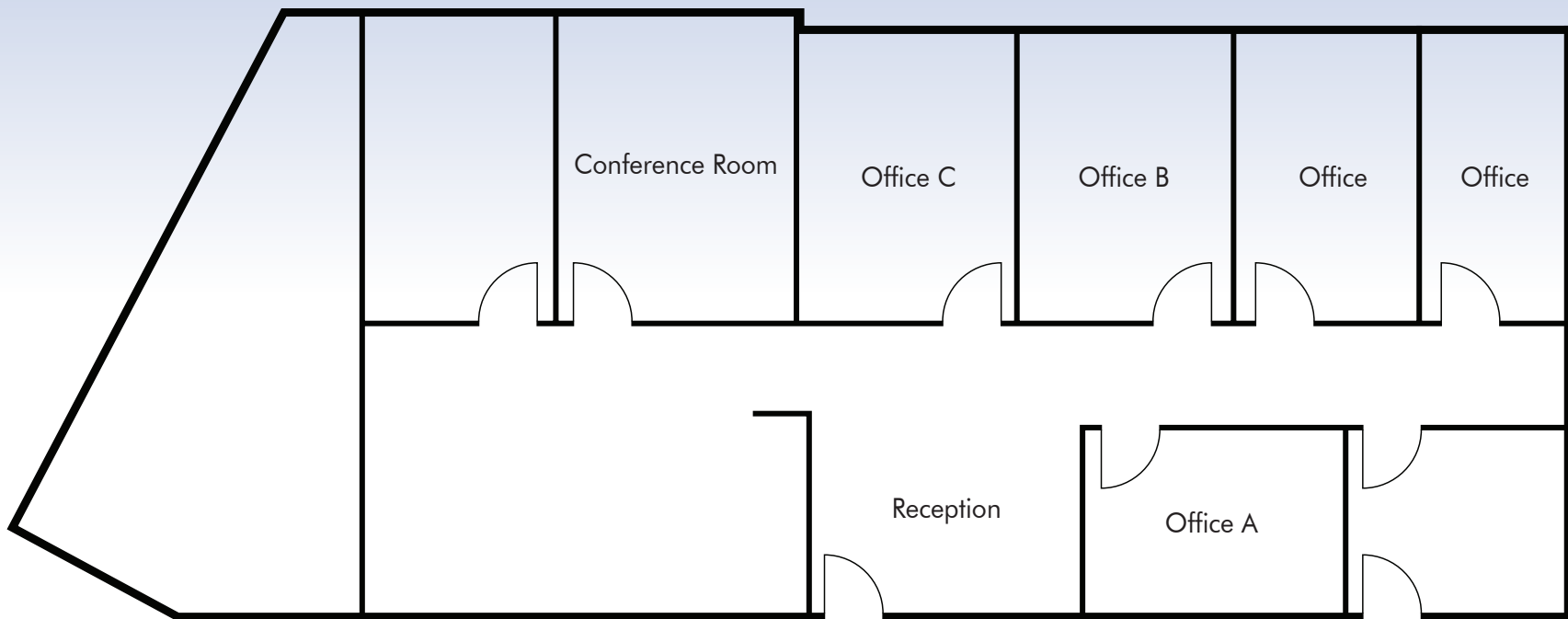
Abundant parking including subterranean



Shared kitchen and conference room

SUITE 218 | 1,148 SF | \$3.75FSG | **\$4,305 MONTHLY TOTAL**

- Ocean Views
- Built Out
- Available Now



2615 Pacific Coast Highway, Hermosa Beach, CA

RICHARD MELBYE

Vice President

Lic. 02052010

+1 310 363 4831

richard.melbye@cbre.com

JOHN LANE

Senior Vice President

Lic. 01894667

+1 310 363 4947

john.lane@cbre.com

OFFICE SUITES FOR LEASE



Ocean Plaza

2615 Pacific Coast Highway, Hermosa Beach, CA

© 2025 CBRE, Inc. All rights reserved. This information has been obtained from sources believed reliable but has not been verified for accuracy or completeness. CBRE, Inc. makes no guarantee, representation or warranty and accepts no responsibility or liability as to the accuracy, completeness, or reliability of the information contained herein. You should conduct a careful, independent investigation of the property and verify all information. Any reliance on this information is solely at your own risk. CBRE and the CBRE logo are service marks of CBRE, Inc. All other marks displayed on this document are the property of their respective owners, and the use of such marks does not imply any affiliation with or endorsement of CBRE. Photos herein are the property of their respective owners. Use of these images without the express written consent of the owner is prohibited.

CBRE