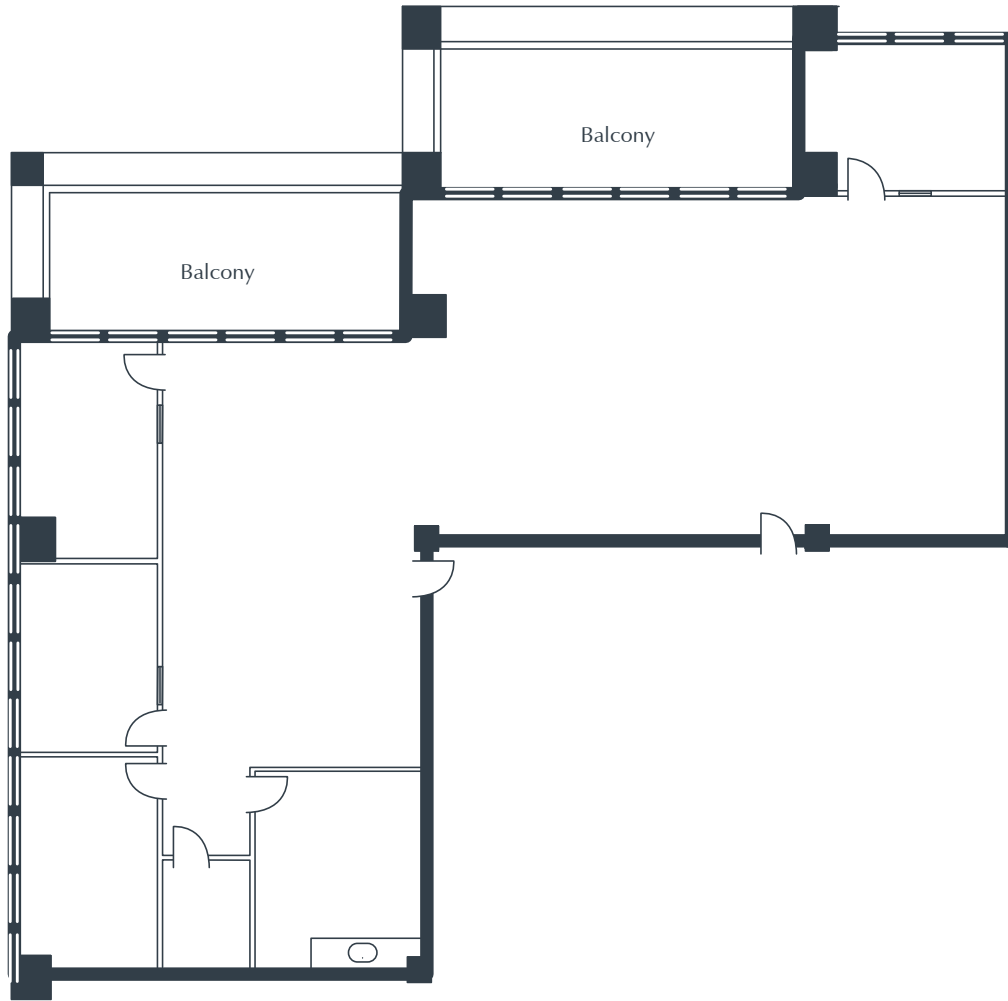


MISSION CORPORATE PLAZA

27261 Las Ramblas, Suite 320
Mission Viejo, CA

3,118 Square Feet
Call for Pricing
Full Service Gross



NOTES

- Reception
- 4 Window Offices
- Kitchen
- Storage Room
- Large Open Work Area
- Free Covered Parking
- Part of a Professionally Managed Business Park

Created by Olen Commercial Realty Corp., 2022.
Information is not to be published or copied without
written approval. Square footage and floor plans are
estimates and should be separately verified. All rates,
terms, floor plans, and building facts are subject to
change without notice.

ea 11.06.2024

ELLYSSA DERRY

Senior Leasing Director
949.719.7204
ederry@olen.com



Seven Corporate Plaza
Newport Beach, CA
949.644.6536
www.olen.com