



5,971 sq ft self-contained office building



SELF-CONTAINED & STYLISH

8 Hinde Street provides 5,971 sq ft of high-quality CAT A office accommodation in one of London's most desirable locations.

Each level benefits from abundant natural light, VRF heating and cooling, a passenger lift, shower facilities and an impressive entrance. The building also benefits from a roof terrace with dedicated catering facilities, offering an exceptional setting for hosting and entertaining.

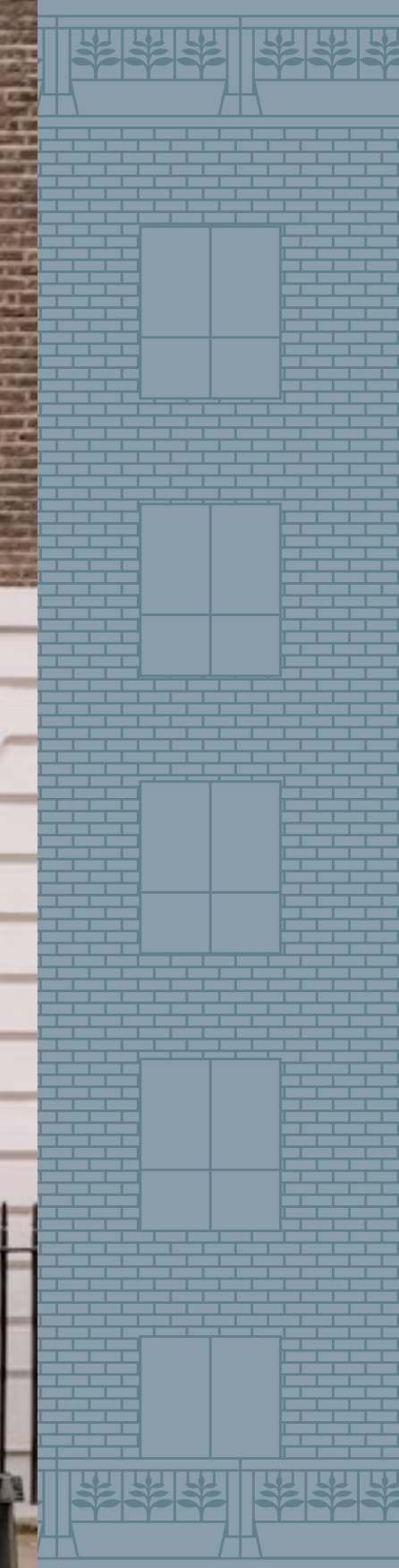


View over Hinde Street



Building exterior

STREET





4th floor terrace



Typical office floor

AVAILABILITY

FLOOR	SQ FT	SQ M
ROOF TERRACE	540	50.0
5TH	755	70.1
4TH	755	70.1
3RD	804	74.7
2ND	793	73.7
1ST	801	74.4
GROUND	905	84.4
RECEPTION	155	14.4
LOWER GROUND	1,003	93.2
TOTAL*	5,971	554.7

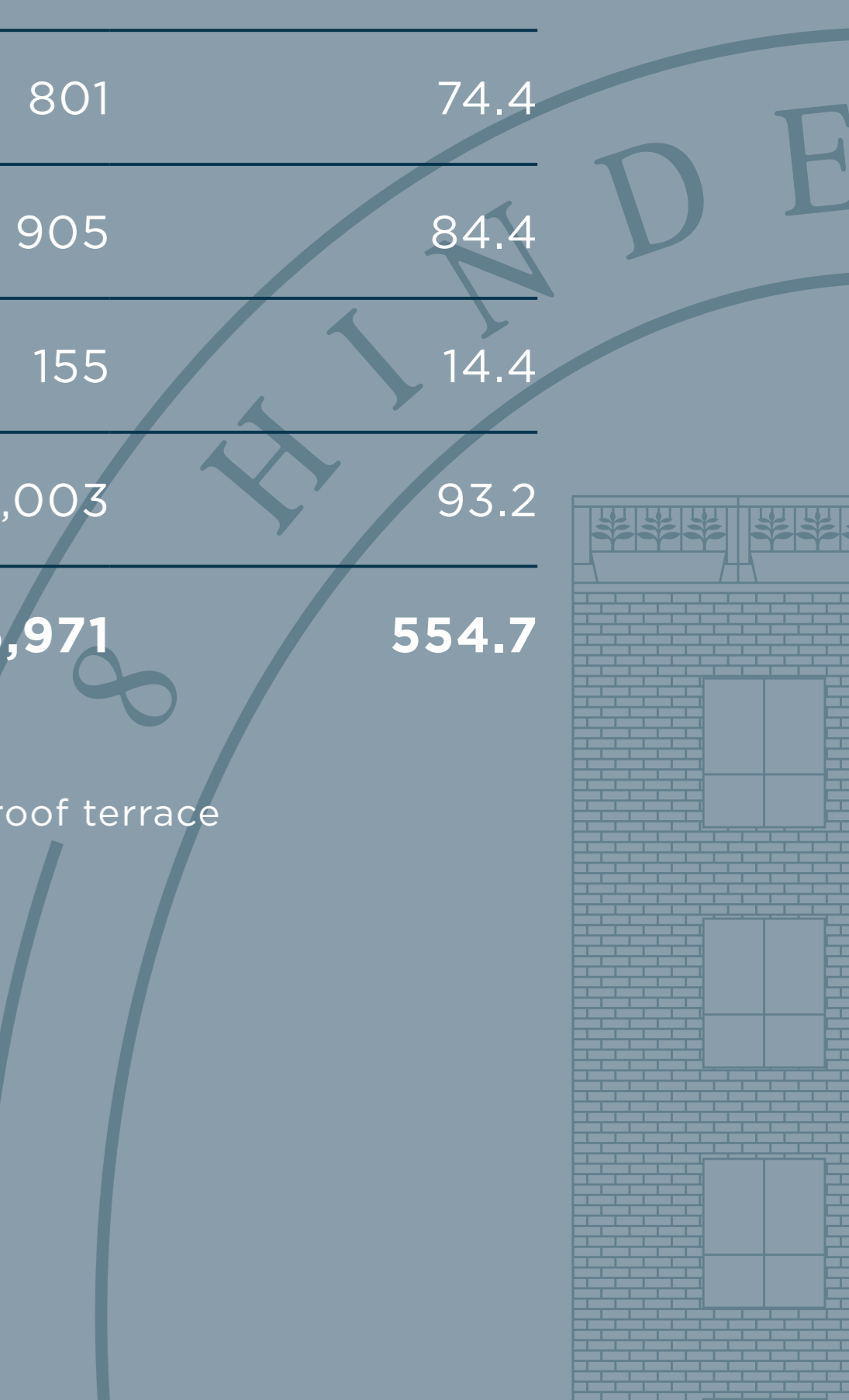
*Total excludes roof terrace



Indicative fit-out CGI



Ground floor skylight





8 HINDE STREET



Roof terrace



Ground floor



Indicative fit-out CGI





8 HINDE STREET

MARYLEBONE, W1

HIGHLIGHTS



NEWLY REFURBISHED
CAT A SPACE



SELF-CONTAINED



SHOWER FACILITIES



OUTDOOR SPACE



VRF HEATING &
COOLING SYSTEM



PASSENGER LIFT



BIKE RACKS



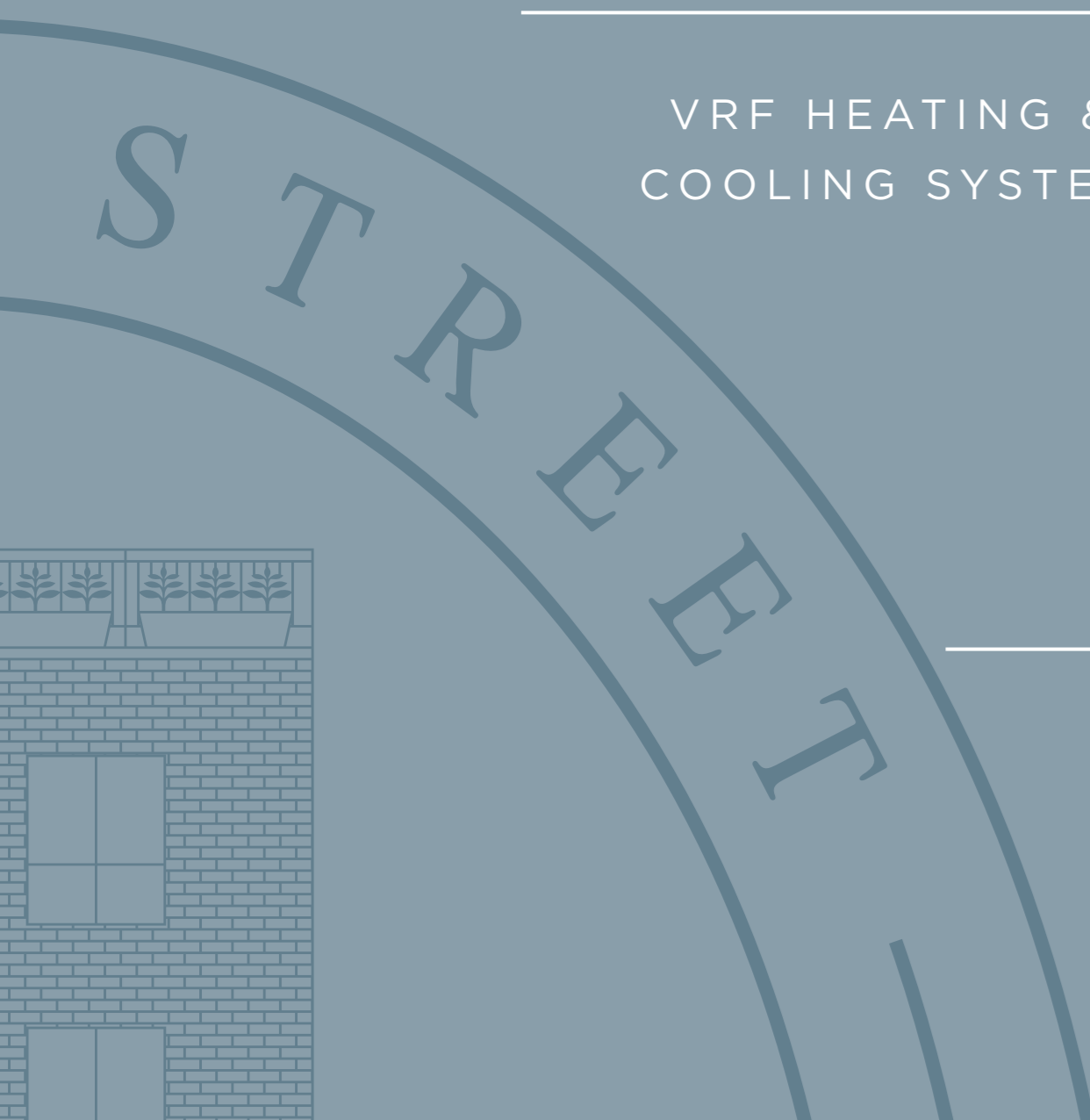
1st floor terrace



Typical office floor



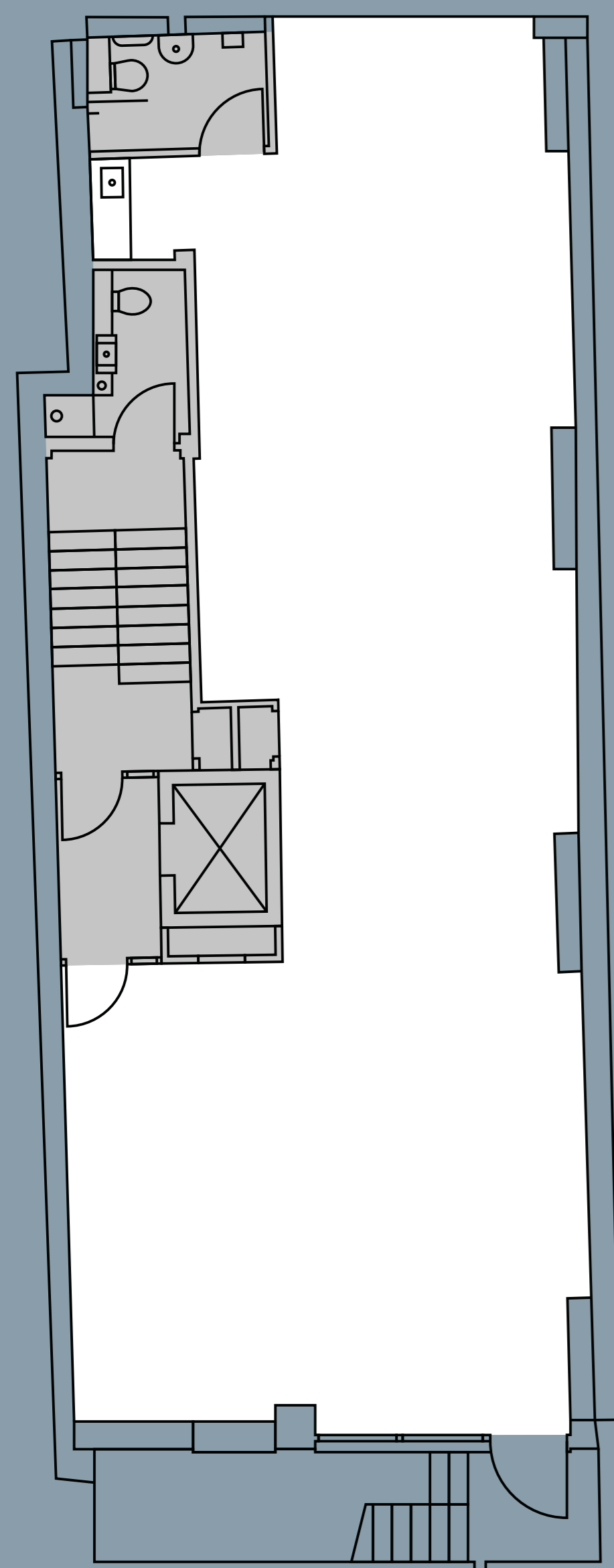
Indicative fit-out CGI





LOWER GROUND

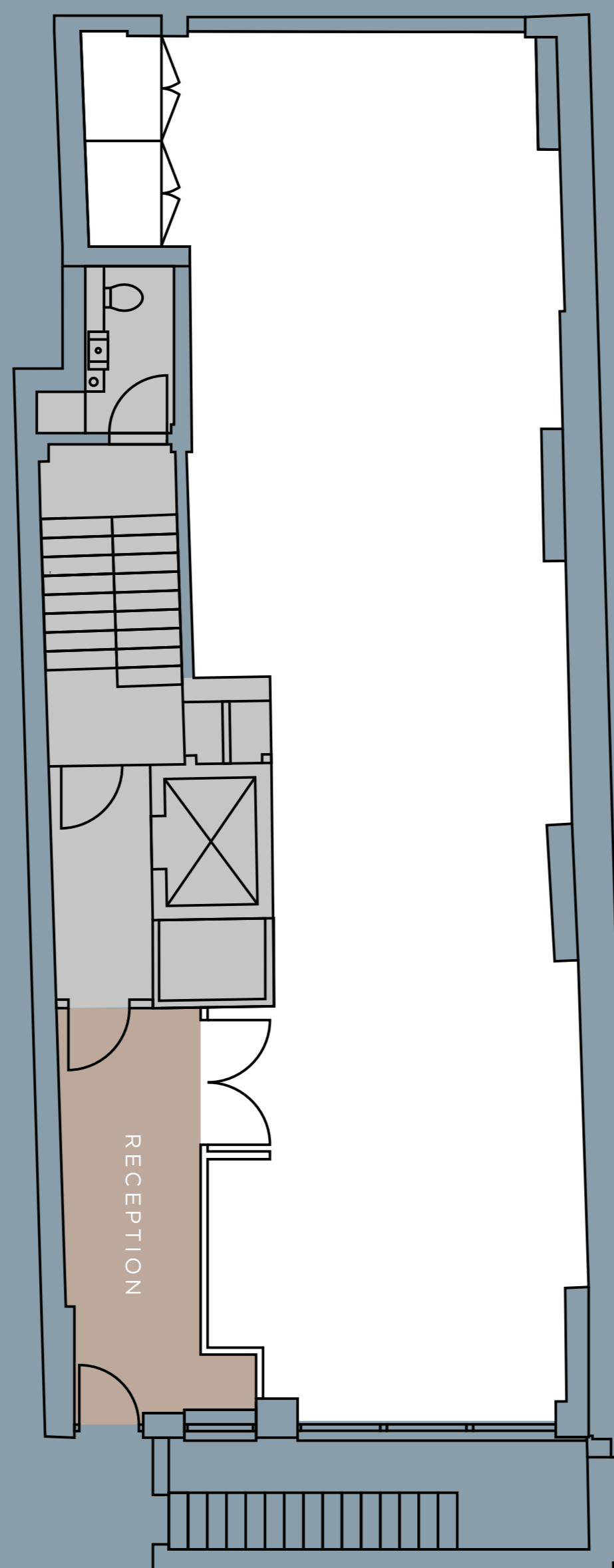
1,003 SQ FT | 93.2 SQ M



HINDE STREET

GROUND FLOOR

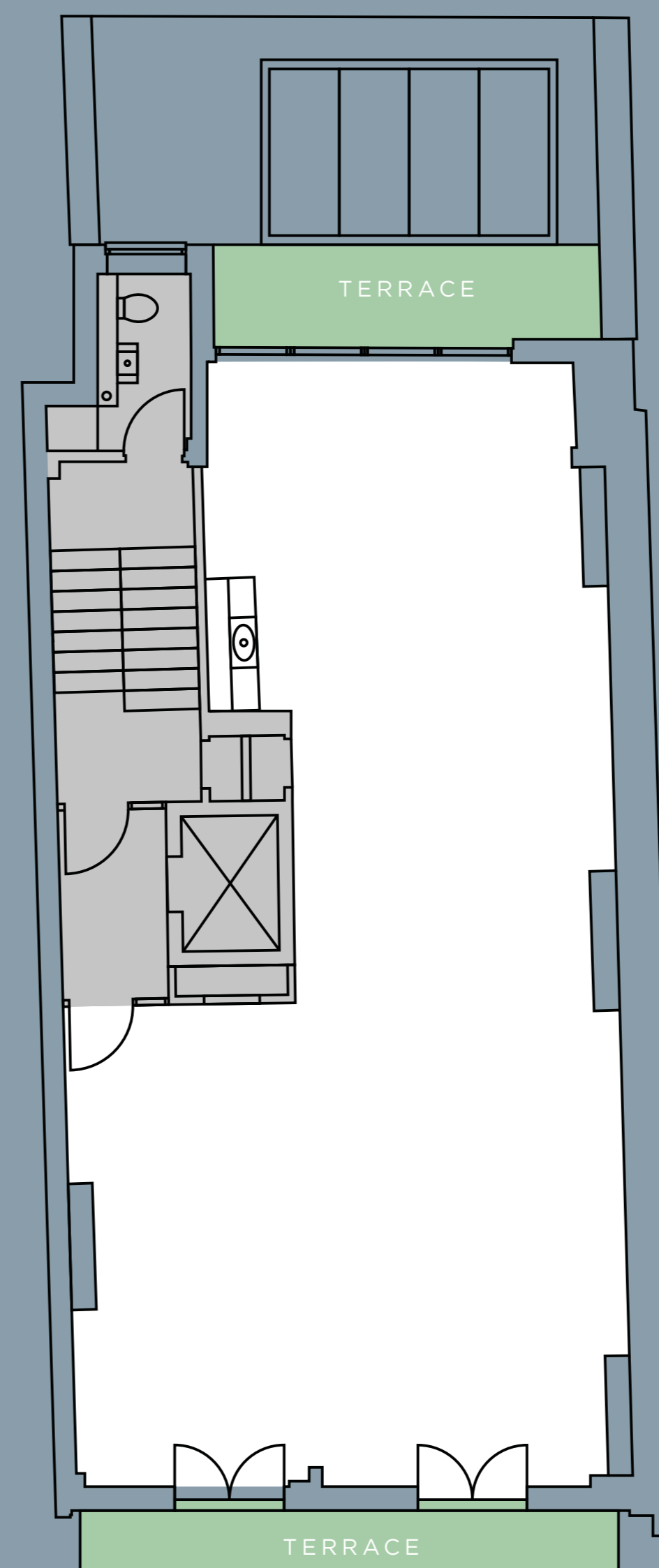
905 SQ FT | 84.4 SQ M



HINDE STREET

1ST FLOOR

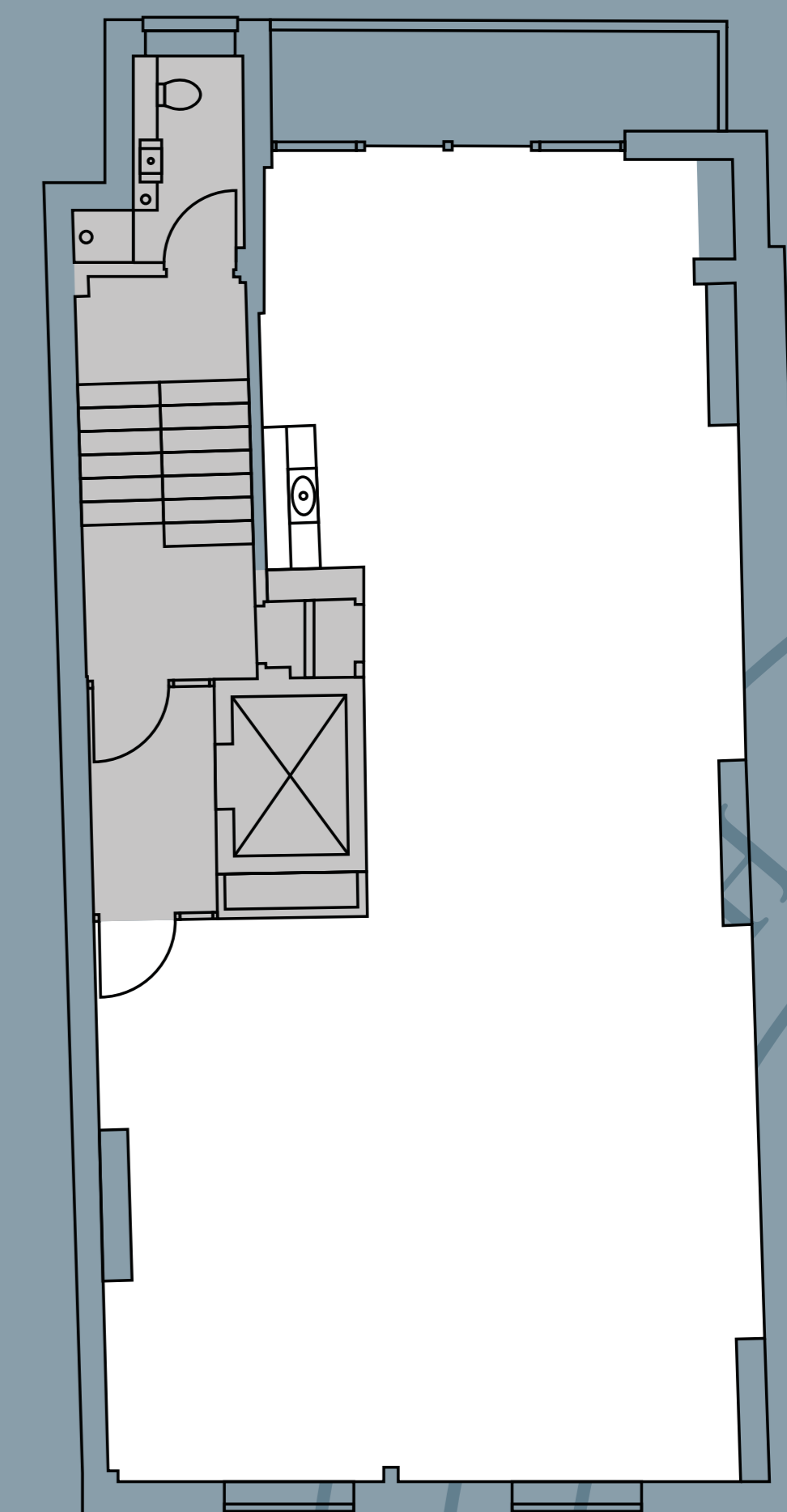
801 SQ FT | 74.4 SQ M



HINDE STREET

2ND FLOOR

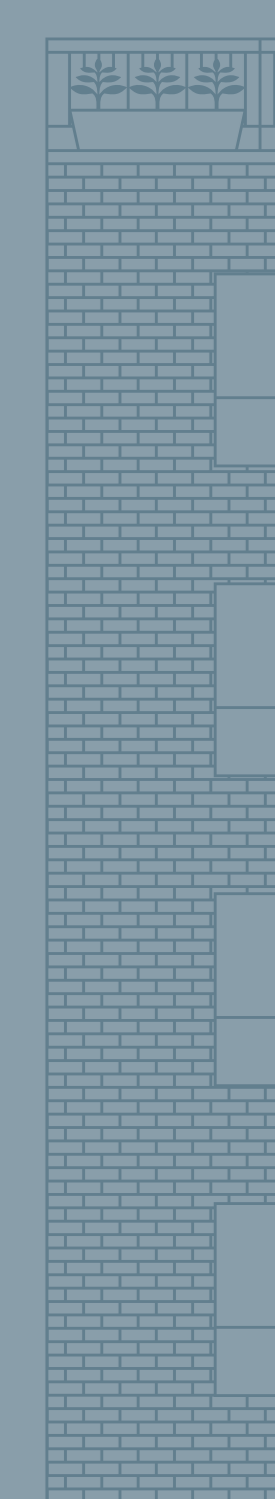
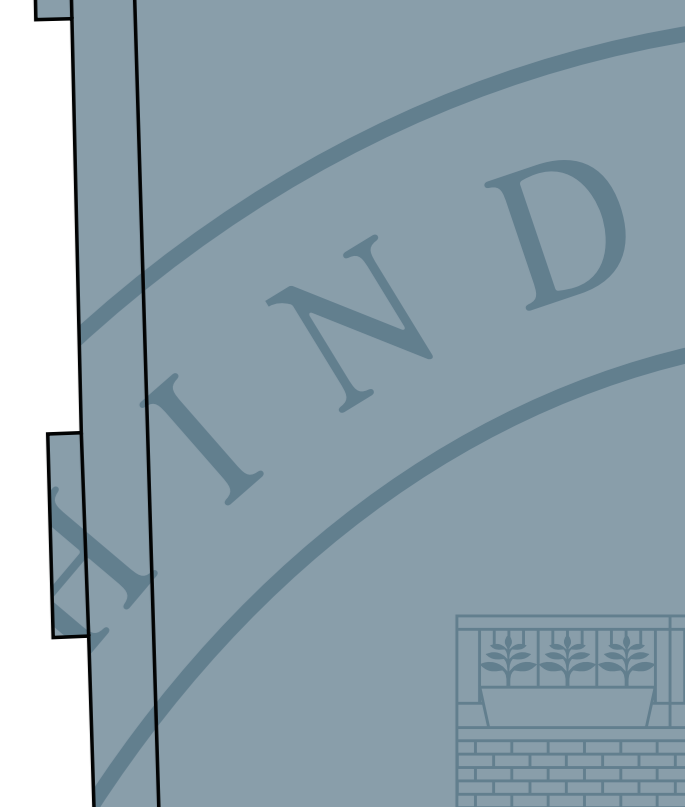
793 SQ FT | 73.7 SQ M



HINDE STREET



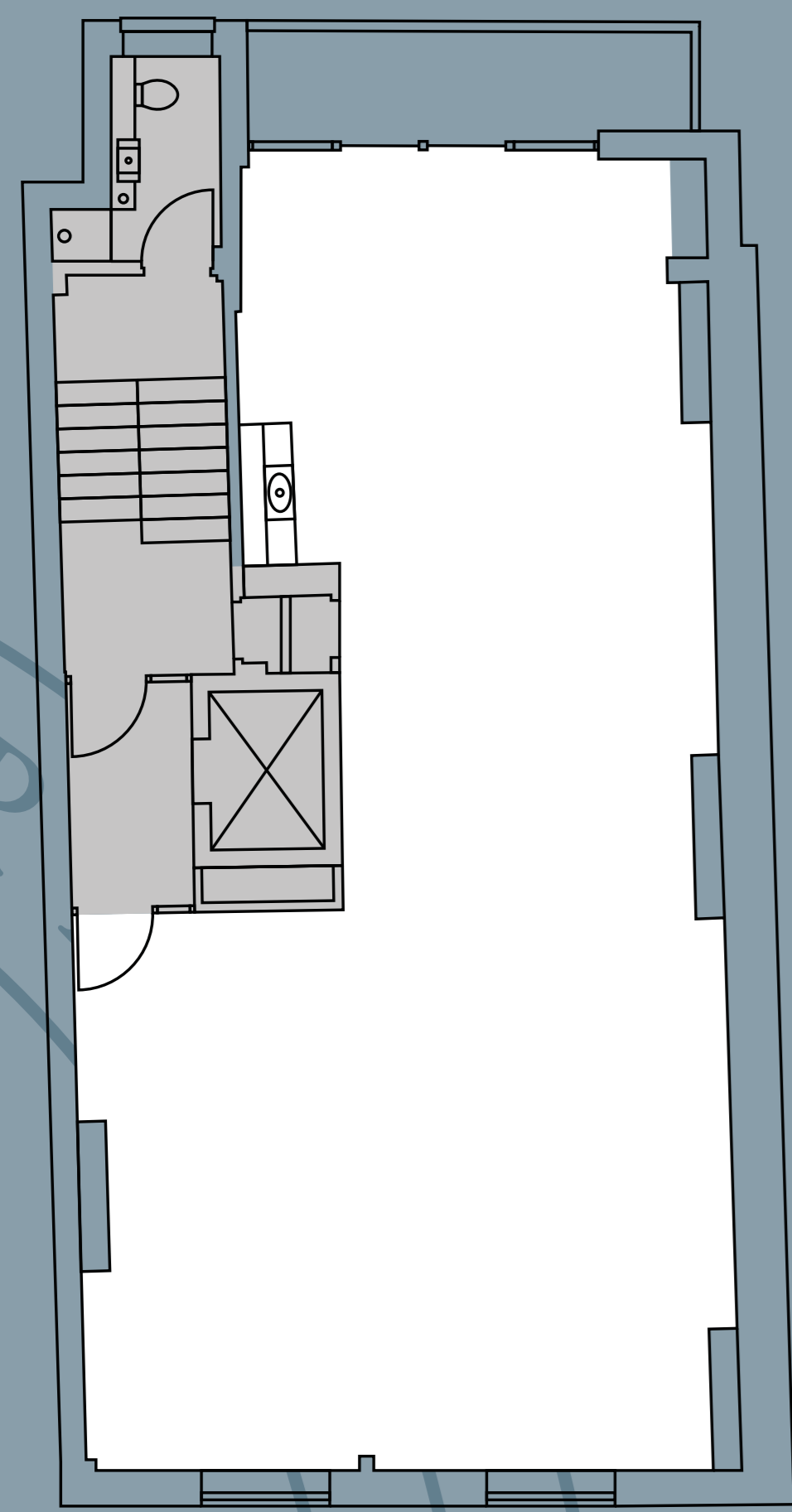
N





3RD FLOOR

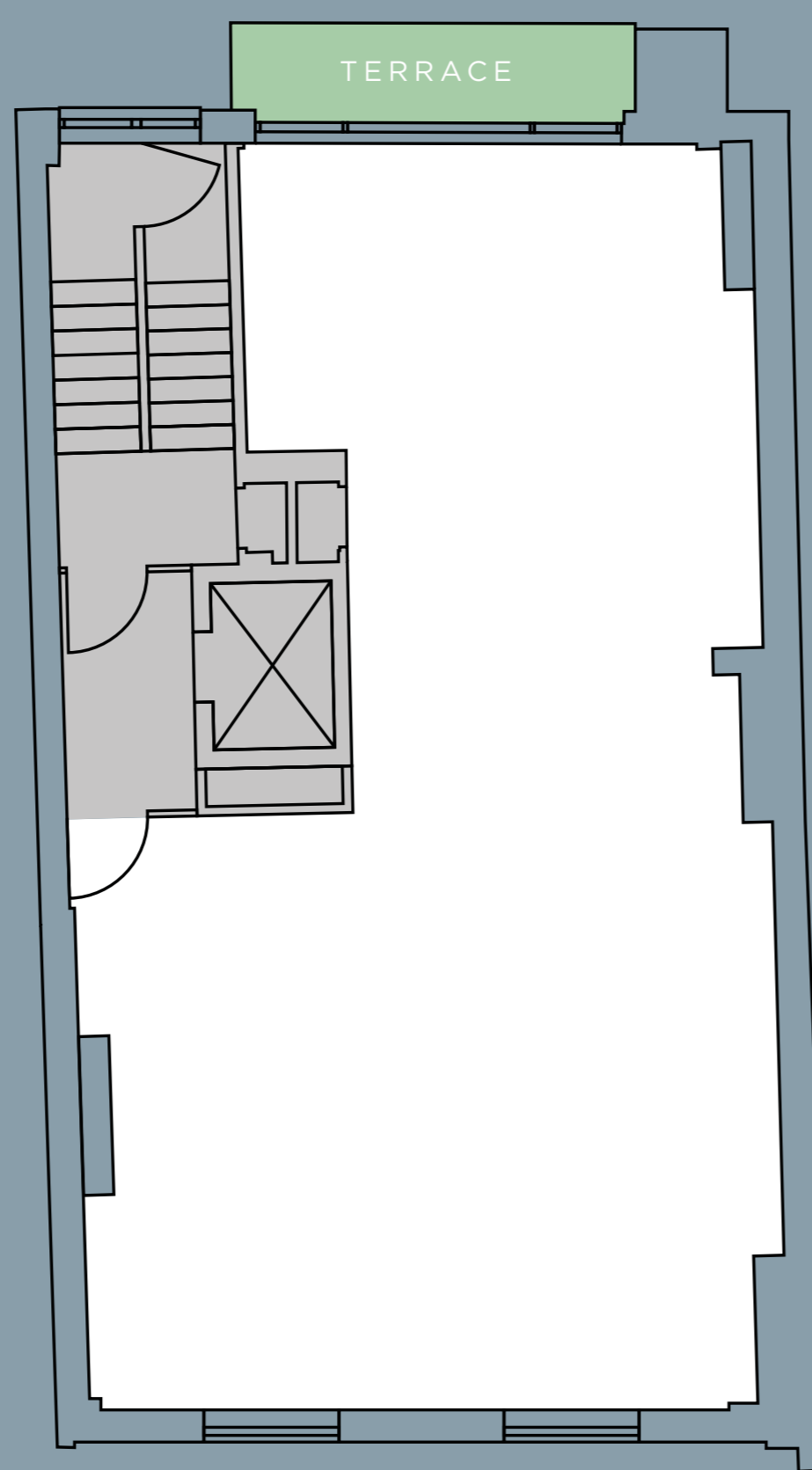
804 SQ FT | 74.7 SQ M



HINDE STREET

4TH FLOOR

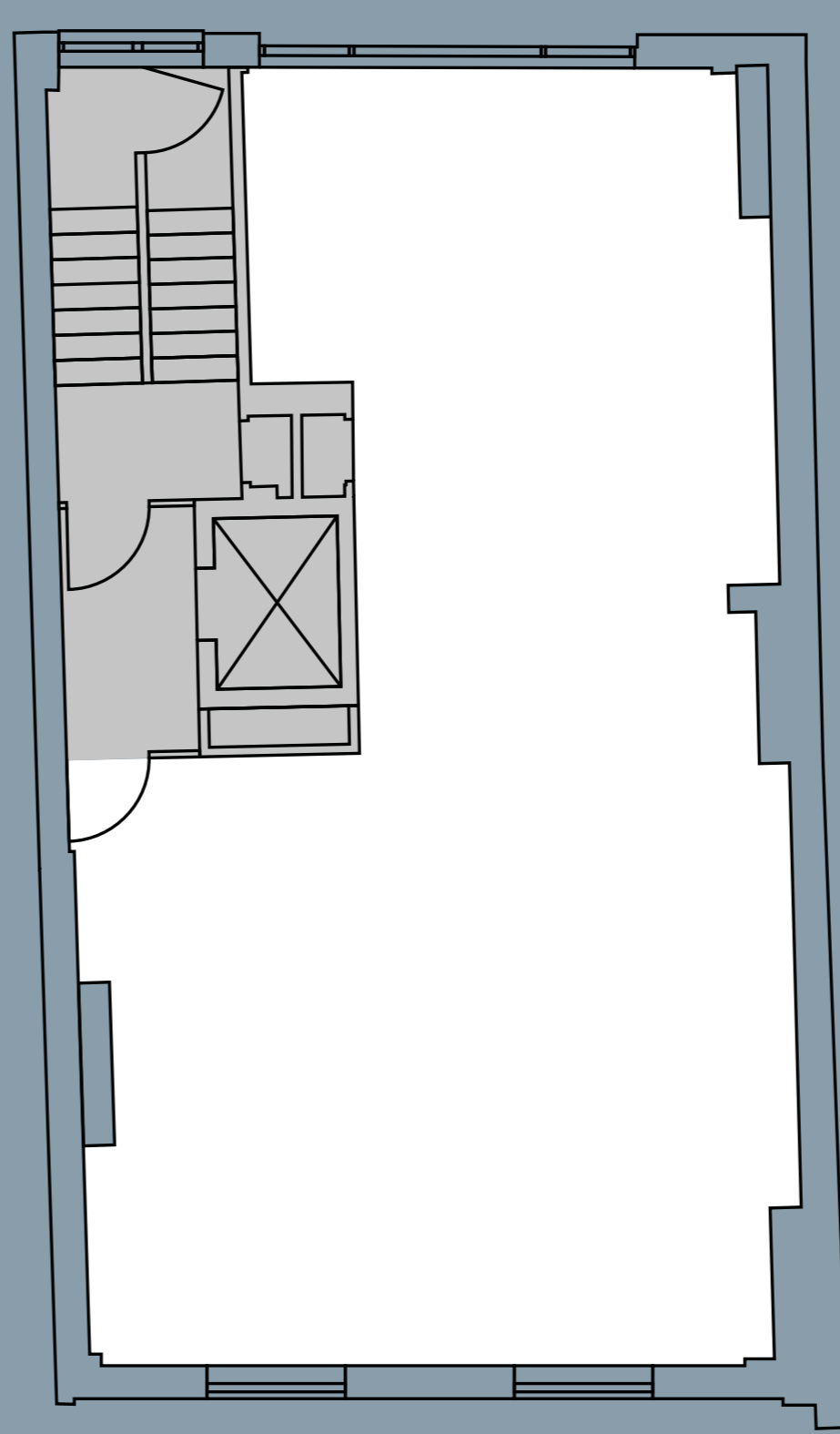
755 SQ FT | 70.1 SQ M



HINDE STREET

5TH FLOOR

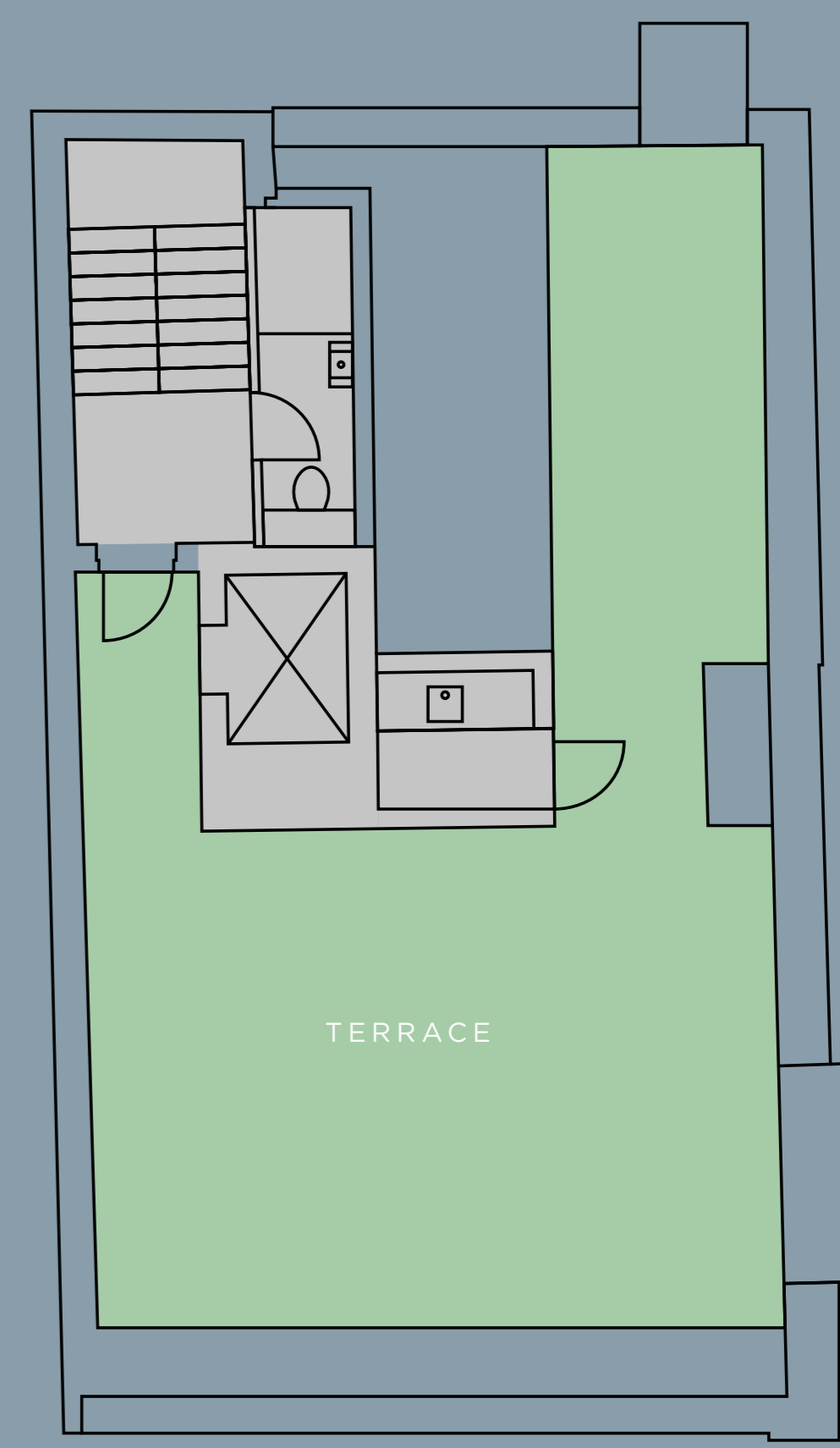
755 SQ FT | 70.1 SQ M



HINDE STREET

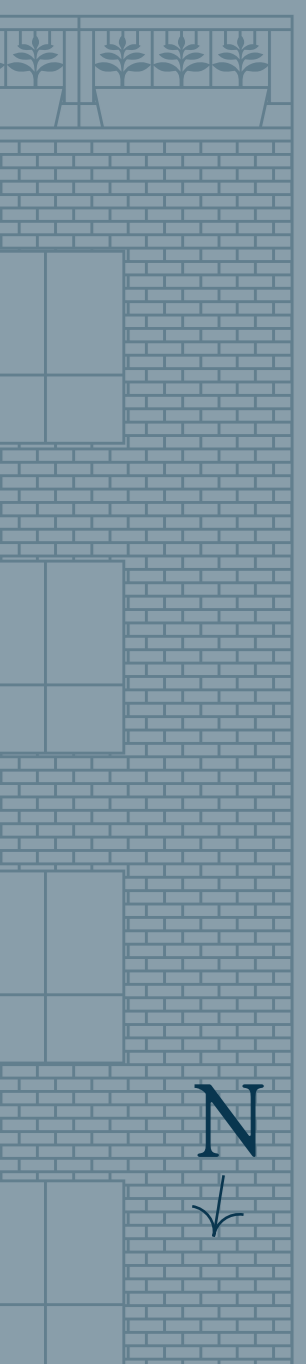
ROOF TERRACE

540 SQ FT | 50.0 SQ M



HINDE STREET

STREET





VIBRANT MARYLEBONE

8 Hinde Street is superbly positioned in the heart of a vibrant neighbourhood, nestled between the peaceful Manchester Square and the lively Marylebone High Street, with cafés, restaurants and premium retail moments away. Connectivity could not be easier with Bond Street, Oxford Circus and Marble Arch Underground stations all within a short walk.



BAKER STREET

13 MINS WALK



CHILTERN STREET DELI
CHILTERN FIREHOUSE
FARMERS MARKET
MONOCLE SHOP
GRANGER & CO
MONICA VINADER

GLoucester Place

Harley Street

Portland Place



LE RELAIS DE VENISE

THIRD SPACE

THE MARYLEBONE

THE IVY CAFE

THE LANGHAM

ROYAL CHINA

THE WALLACE COLLECTION

QUEEN ANNE STREET

SANTO MARE

MANCHESTER SQUARE GARDEN

HINDE STREET

BACK ON TRACK

2 VENETI

LES 110 DE TAILLEVENT

WIGMORE HALL

CAVENDISH SQUARE GARDENS

HOME HOUSE

LINA STORES

KOIBIRD

DELAMINA

NOBU

ZOILO

WIGMORE STREET

PORTMAN SQUARE GARDEN

BAO

MARKET HALLS

HYATT REGENCY

ARÔME

FLAT IRON

ST CHRISTOPHER'S PLACE

OXFORD CIRCUS

THE MONTAGU KITCHEN

ARCADIA MISSA

HARRY'S

JOHN LEWIS 12 MINS WALK

DAISY GREEN

SELFRIDGES

BUSABA
THE SALAD PROJECT

BOND STREET
6 MINS WALK

OXFORD STREET

KOL



CHISOU SUSHI & IZAKAYA

OXFORD STREET

BURGER & LOBSTER

BREAD & CO

L'ETO

THE CAVIAR BAR

MERCATO

THE MAINE

NEW BOND ST



NIKKI STOUGHTON-HARRIS

nikki.stoughtonharris@savills.com

07815 032 103

ANDREW WEDDERSPOON

awedderspoon@savills.com

07807 999 363

MARC DAVIS

marcdavis@summitpa.com

07973 727 470

Important notice relating to the Misrepresentation Act 1967 and the Property Misdescriptions Act 1991: (i) the particulars are set out as a general outline only for guidance of intending purchasers or lessees and do not constitute, nor constitute part of, an offer or contract (ii) all descriptions, dimensions, references to condition and necessary permission for use and occupation, and other details are given in good faith and are believed to be correct, but any intending purchasers or occupiers should not rely on them as statements or representations of fact, but must satisfy themselves by inspection or otherwise as to the correctness of each of them. February 2026

Marketing: Stuart Chapman Design