

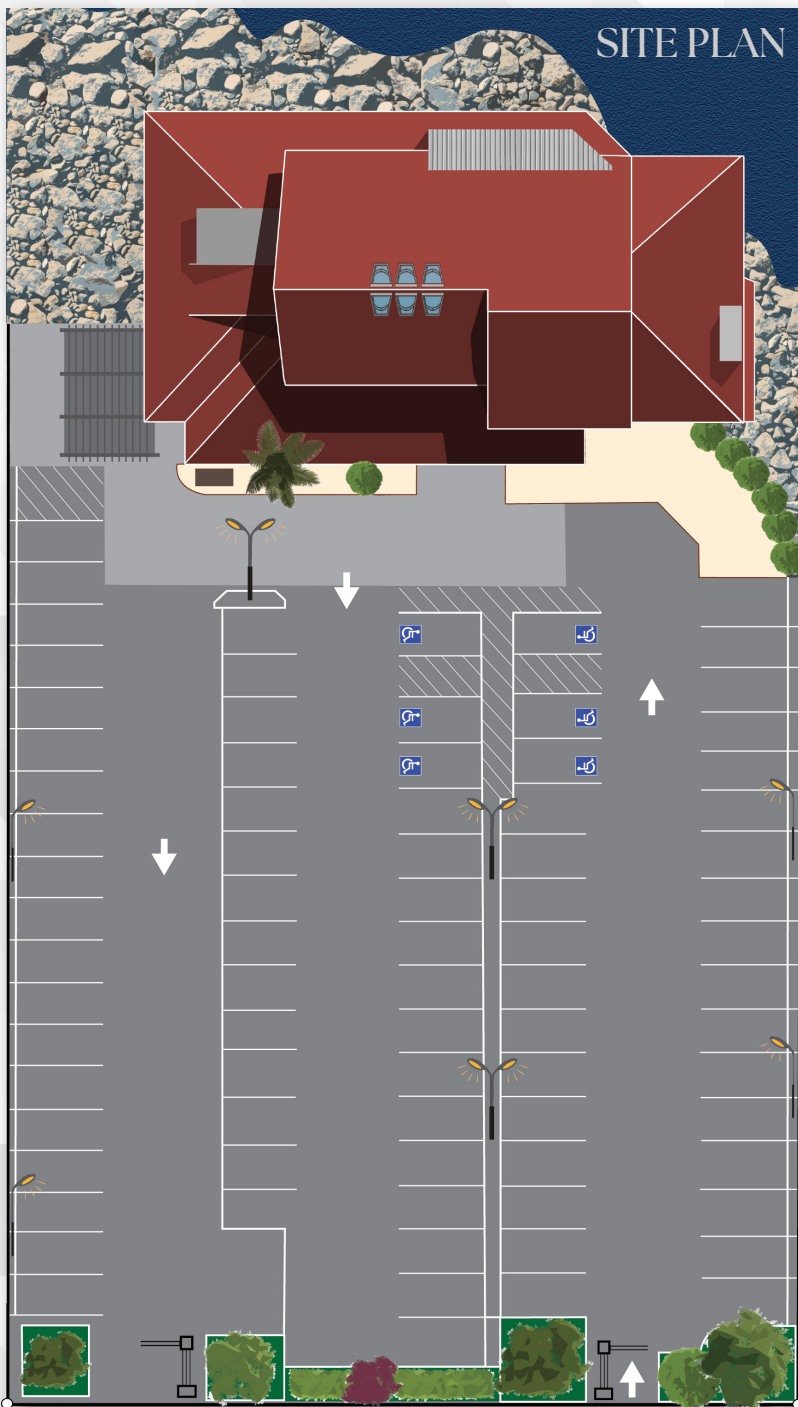
# FOR LEASE

Available for the first time in 40 Years!

9,448 SF Freestanding Oceanfront Restaurant  
with Attached Parking Lot

600 Cannery Row, Monterey, California 93940





## PROPERTY DETAILS

- Total Space Available: 9,448 SF
- Total Land Area: 43,106 SF
- Property Type: Restaurant/Retail
- Year Built: 1972
- Available: August 2027

## HIGHLIGHTS

- 270-degree views of Monterey Bay - a spectacular coastal setting for creating a memorable experience
- Flexible space suitable for restaurant, entertainment, or retail use with direct waterfront exposure
- Built-out restaurant with water rights for over 300 seats
- 81 on-site parking spaces - a rare amenity in the area
- Nearby 1,000+ space city parking garage
- Adjacent to McAbee Beach
- Multiple signage locations
- Within walking distance of over 800 of Monterey's most frequently booked hotel rooms







MONTEREY PLAZA  
HOTEL & SPA



Coastal  
KITCHEN  
SCHOONERS  
MONTEREY



CHART  
HOUSE  
RESTAURANT



MONTEREY BAY INN  
INNS OF MONTEREY

CONTACT



**Andie Blade**  
 Director of Leasing  
 (831) 649-2604  
 ablade@canneryrow.com

