

Leasing Opportunity

Unit 602
1708 Dolphin Ave.
Kelowna, BC

Landmark 2

Unit 602



The Landmark District is a destination for locals built by a local team that's deeply committed to the future of our region. Strategically positioned in the centre of Kelowna, our neighbourhood has over one million square feet of retail, restaurants, and office space spread over 15 acres. Here, cutting-edge towers elevate Kelowna's skyline while thoughtful public areas provide space for leisure, connection and community events.

Leasable Area

5,111 SF

Space Type

Office

Availability

Fall 2025

Building Name

Landmark 2

Civil Address

602 - 1708 Dolphin Ave.

Parking

Free 3-hour
visitor parking

Asking Rents

Inquire

Description

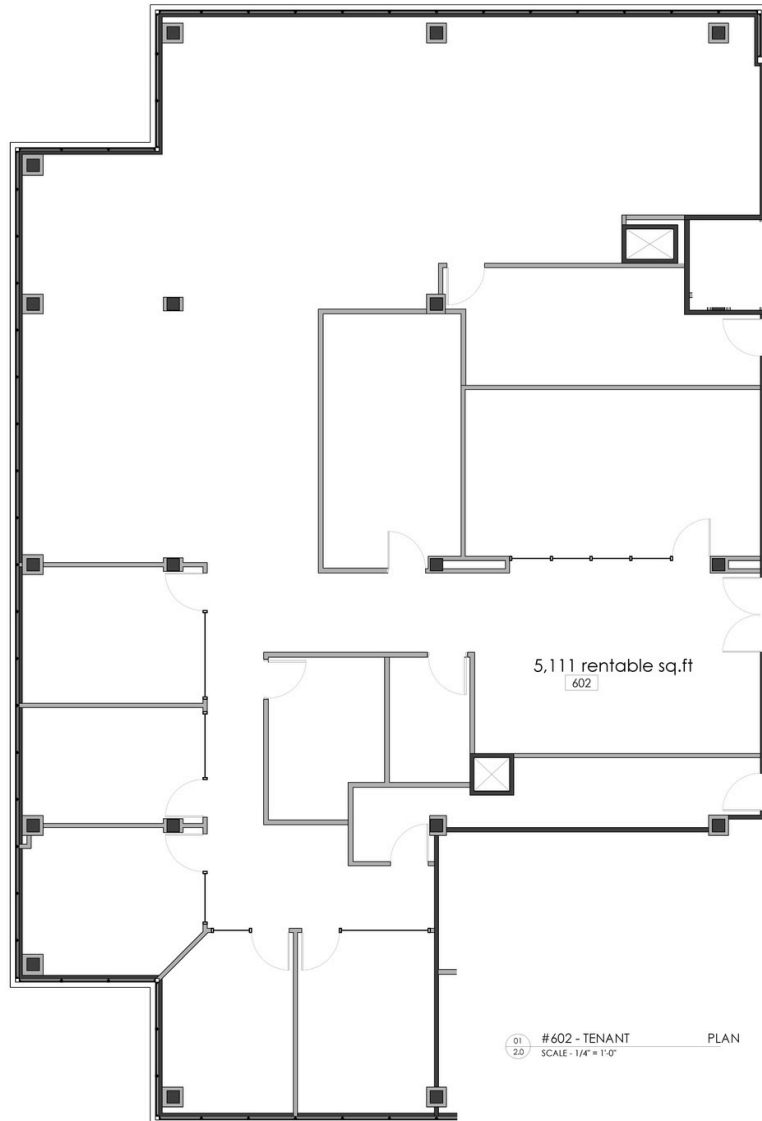
This office offers a spacious open workspace filled with natural light, private offices and two professional boardrooms for meetings and presentations. A perfect balance of focus and collaboration in one flexible layout.

Kitchenette

Featuring: Sink, dishwasher, fridge and seating area.

Other

Special Amenities: Four, fully-equipped modern boardrooms available for bookings, two state of the art gyms, childcare options, on-site security and end of trip facilities.



Floor Plan



Leasable Area
5,111 sq.ft







Landmark

DISTRICT



250.763.2305

General Enquiries

connect@landmarkdistrict.ca

Leasing Enquiries

leasing@stobergroup.com

Website

www.landmarkdistrict.ca

