

FOR LEASE



McGinnis Green

Jerome Drive & Route 13 (N. Dupont Highway)
Cheswold, DE 19901

Overview

McGinnis Green is a retail development on US-13 in north Dover, Delaware. Anchored by a 185,000 square foot Walmart Supercenter, the development consists of 22,000 square feet of retail space and three pad sites. The development has signalized access and a shared entrance drive with Walmart. Right-in access from northbound Route 13.

Quick Facts

Availability	Immediate
Size	1,355 & 1,520 square feet (can be combined) 3,500 square feet
Net Charges	CAM: \$3.75 psf; INS: \$0.35 psf, TAX: \$1.00 psf; Trash charge: \$0.55 psf
Signage	US-13 Pylon & Monument Signage Available
Co-Tenants	US-13 Pylon & Monument Signage Available

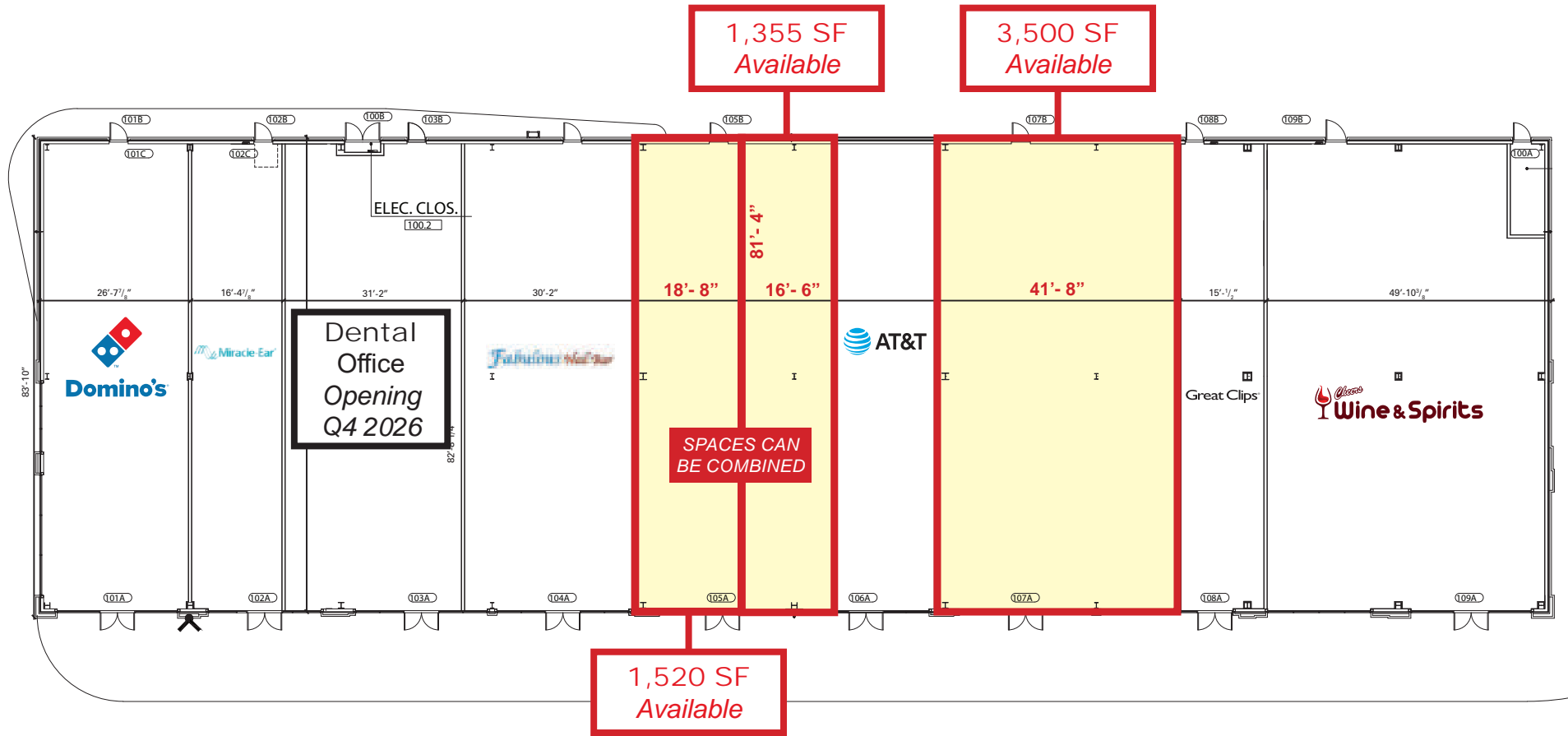


2025 Demographics	3 mile	5 miles	10 miles
POPULATION	19,066	63,836	138,143
HOUSEHOLDS	6,667	23,867	51,170
AVG. HH INCOME	\$104,999	\$95,300	\$98,070
DAYTIME POPULATION	28,892	71,004	160,213
TRAFFIC COUNT	33,067 AADT (N. Dupont Highway)	55,279 AADT (DE Route 1)	



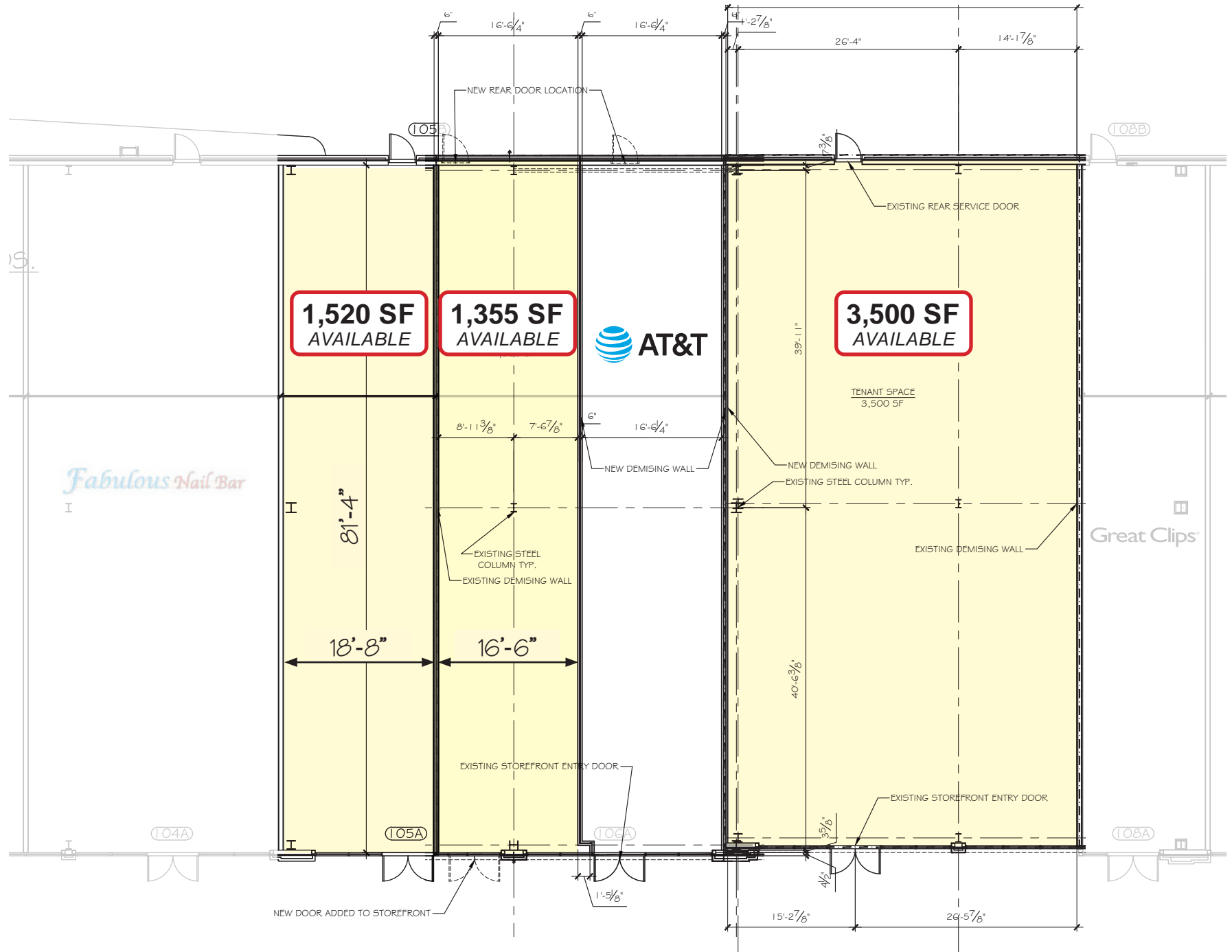
Overall Site Plan

McGinnis Green / Jerome Drive & Route 13 (N. Dupont Highway) / Cheswold, DE 1901



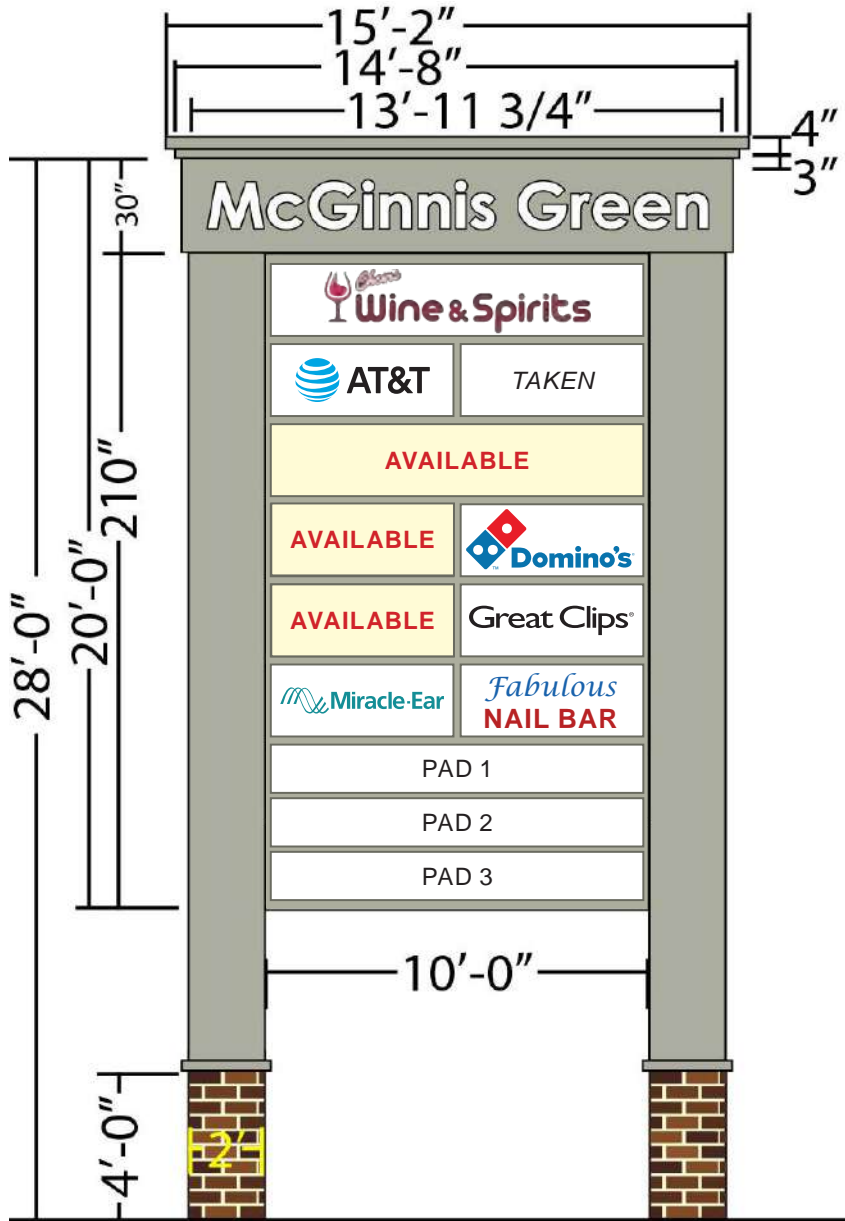
Retail Building Space Plan

McGinnis Green / Jerome Drive & Route 13 (N. Dupont Highway) / Cheswold, DE 19001



Floor Plan - Spaces 1 & 2

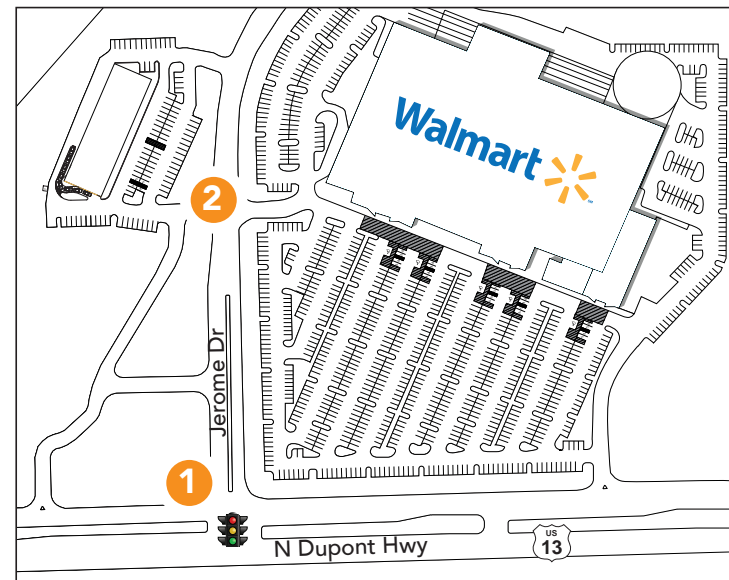
McGinnis Green / Jerome Drive & Route 13 (N. Dupont Highway) / Cheswold, DE 1901



1. Shared Pylon Signage



2. Monument Signage



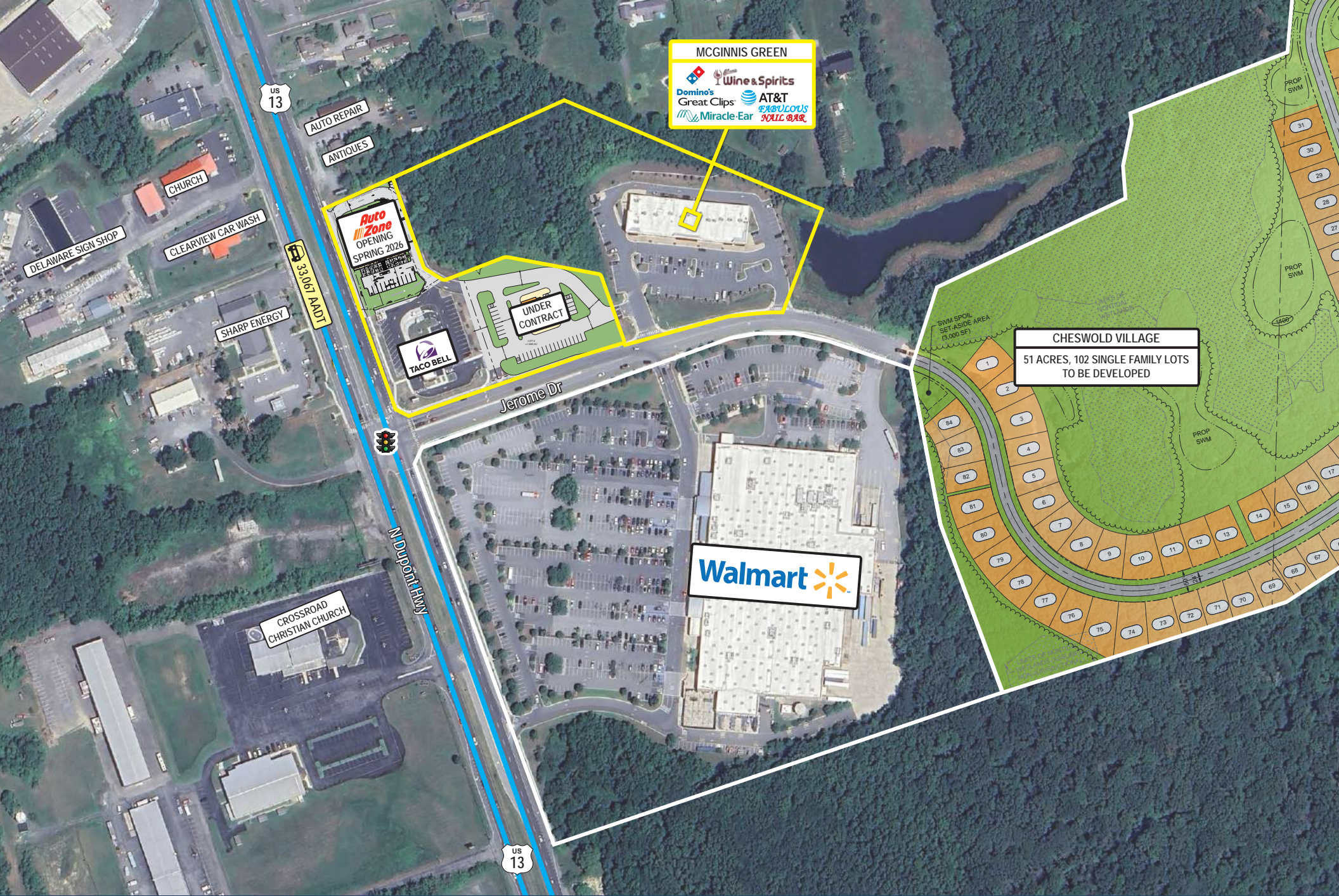
Freestanding Signage

McGinnis Green / Jerome Drive & Route 13 (N. Dupont Highway) / Cheswold, DE 1901



Property Photos

McGinnis Green / Jerome Drive & Route 13 (N. Dupont Highway) / Cheswold, DE 1901



MCGINNIS GREEN
Wine & Spirits
Domino's
Great Clips
Miracle-Ear
AT&T
FABULOUS
KALC BAR

CHESWOLD VILLAGE
51 ACRES, 102 SINGLE FAMILY LOTS
TO BE DEVELOPED

Walmart

Auto Zone
OPENING
SPRING 2026

**UNDER
CONTRACT**

TACO BELL

**CROSSROAD
CHRISTIAN CHURCH**

DELAWARE SIGN SHOP

CLEARVIEW CAR WASH

SHARP ENERGY

AUTO REPAIR

ANTIQUES

CHURCH

3.307 ADT

US 13

US 13

N Dupont Hwy

Jerome Dr



Property Aerial

McGinnis Green / Jerome Drive & Route 13 (N. Dupont Highway) / Cheswold, DE 1901

Interested? Contact:

Charles Rodriguez
ccrod1@aol.com

Tracey Horstmann
traceyhorstmann@outlook.com



46 South State Street
Dover, Delaware 19901

302-674-3400

www.randrcommercialrealty.com

