



9m high fully glazed
Class E space
in the heart of London Bridge



SHARD PLACE
LONDON

TO LET

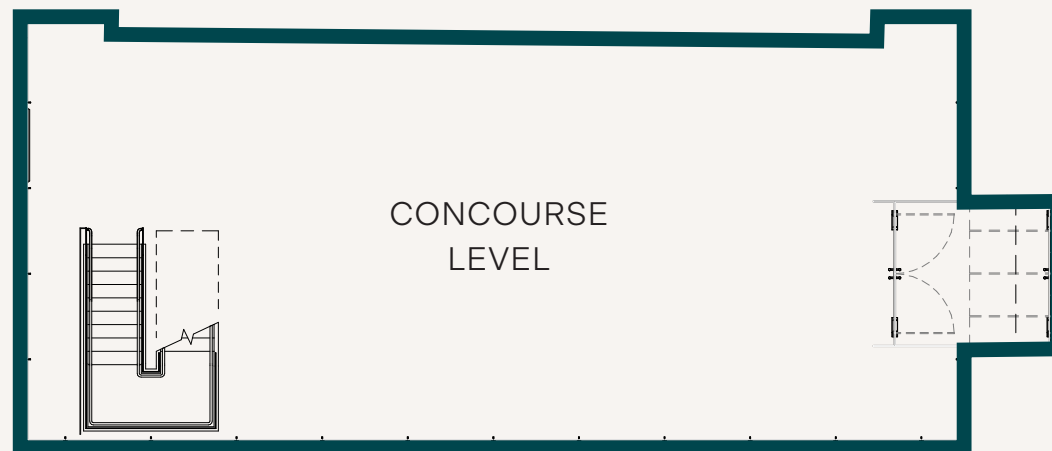
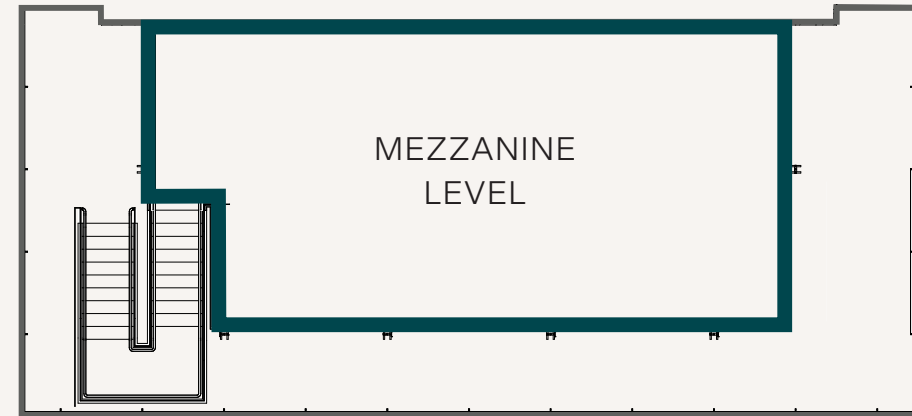
Unit 2, Shard Place, London SE1 9JG
2,278 SQ FT

Shard Place Unit 2

2,278 SQ FT

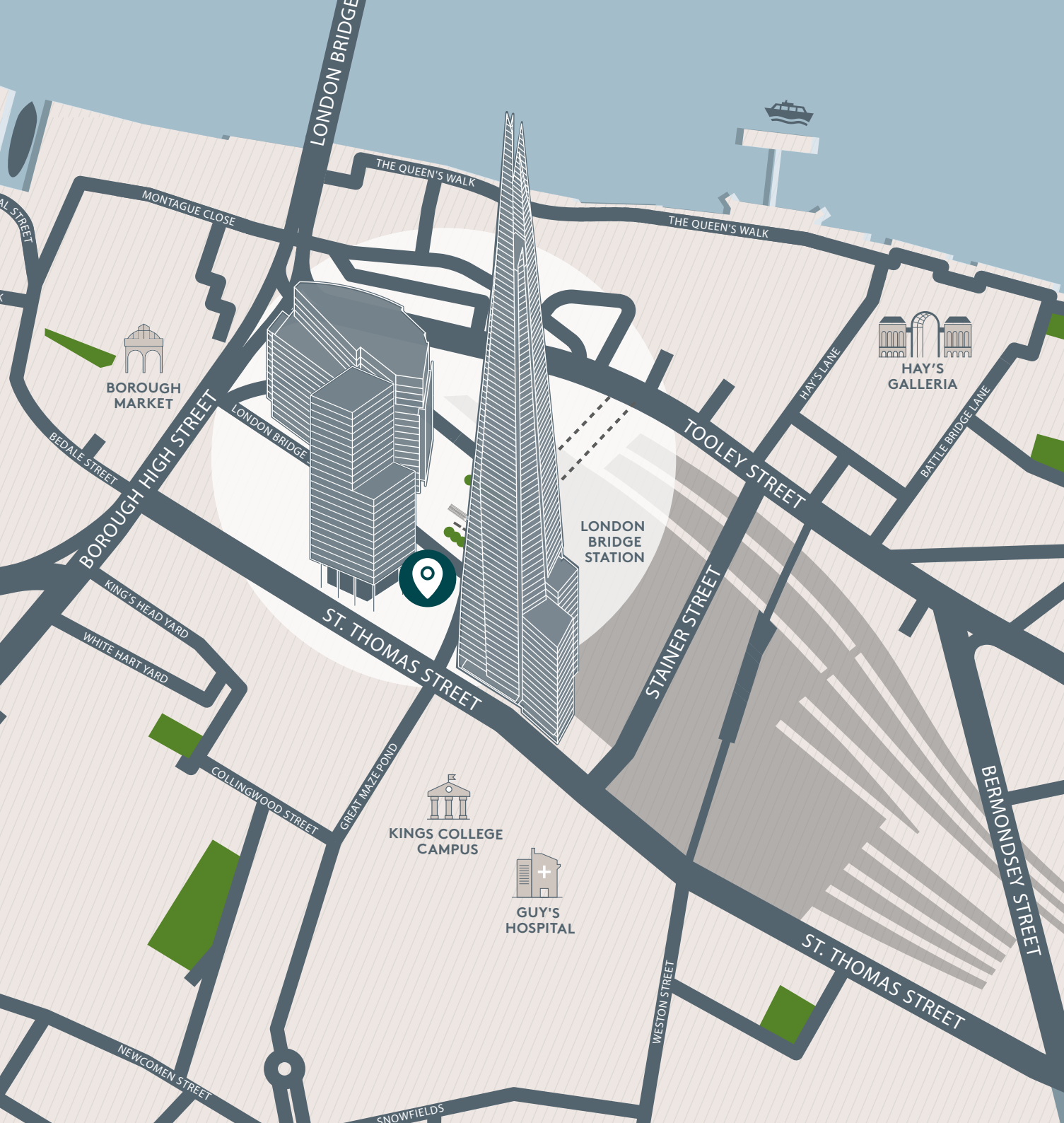
211 SQ M

- Brand new building
- 9m high fully-glazed
- Set within public realm
- Shell & core
- EPC A
- Mezzanine floor
- Adjacent The Shard, Guys Hospital and London Bridge station



TECHNICAL SPECIFICATION	
Electric	100 amp (3 phase)
Low Temp Hot Water (LTHW)	Variable supply for max efficiency
Fresh Air	Ducted internal route provided
Water	22mm supply Drainage
22mm supply Drainage	2x 100mm SVP drains





SHARD PLACE

LONDON

RETAIL ENQUIRIES

JAMES WILLIAMSON
07587 353434
jwilliamson@klm-re.com

HENRY GITTINS
07557 270160
hgittins@klm-re.com



HEALTHCARE ENQUIRIES

DARREN BEST
020 7478 9115
db@savoystewart.co.uk



WWW.THE-SHARD.COM/RETAIL
30 London Bridge Street, London SE1 9JG

IMPORTANT NOTICE

Misrepresentation Act 1967 and Property Misdescriptions Act 1991. The particulars in this brochure are believed to be correct, but their accuracy cannot be guaranteed and they are expressly excluded from any contract. Subject to contract.