

# 2083

COMPTON AVE, STE 201, CORONA

FOR LEASE



**RARE OPPORTUNITY TO DESIGN YOUR OWN SPACE**

**LA** LEE & ASSOCIATES  
COMMERCIAL REAL ESTATE SERVICES

**OC**  
OFFICE GROUP

**ALLEN BASSO**  
Senior Vice President  
Lic. #01298152  
949.790.3130  
abasso@leeirvine.com

**ERIC DARNELL**  
Senior Vice President  
Lic. #01888743  
949.460.3681  
edarnell@leeirvine.com

**KYLEE KING**  
Vice President  
Lic. #02101275  
949.790.3108  
kking@leeirvine.com

## PROPERTY FEATURES

- ±2,945 SF Medical Office Suite
- Corner Suite with Excellent Glass Line and Natural Light
- Elevator served
- Premium Low-Rise Medical Office Building
- Ample Parking
- High-End Common Area Upgrades
- Prime Location Near Major Freeways, Retail, and Residential
- Rare Opportunity to Design Your Own Space
- Professionally Managed Medical Building
- Tenant Improvement Allowance Available

**ASKING LEASE RATE: \$2.25/SF NNN (NETS \$0.62/SF)**



**ALLEN BASSO**  
Senior Vice President  
Lic. #01298152  
949.790.3130  
abasso@leeirvine.com



**ERIC DARNELL**  
Senior Vice President  
Lic. #01888743  
949.460.3681  
edarnell@leeirvine.com

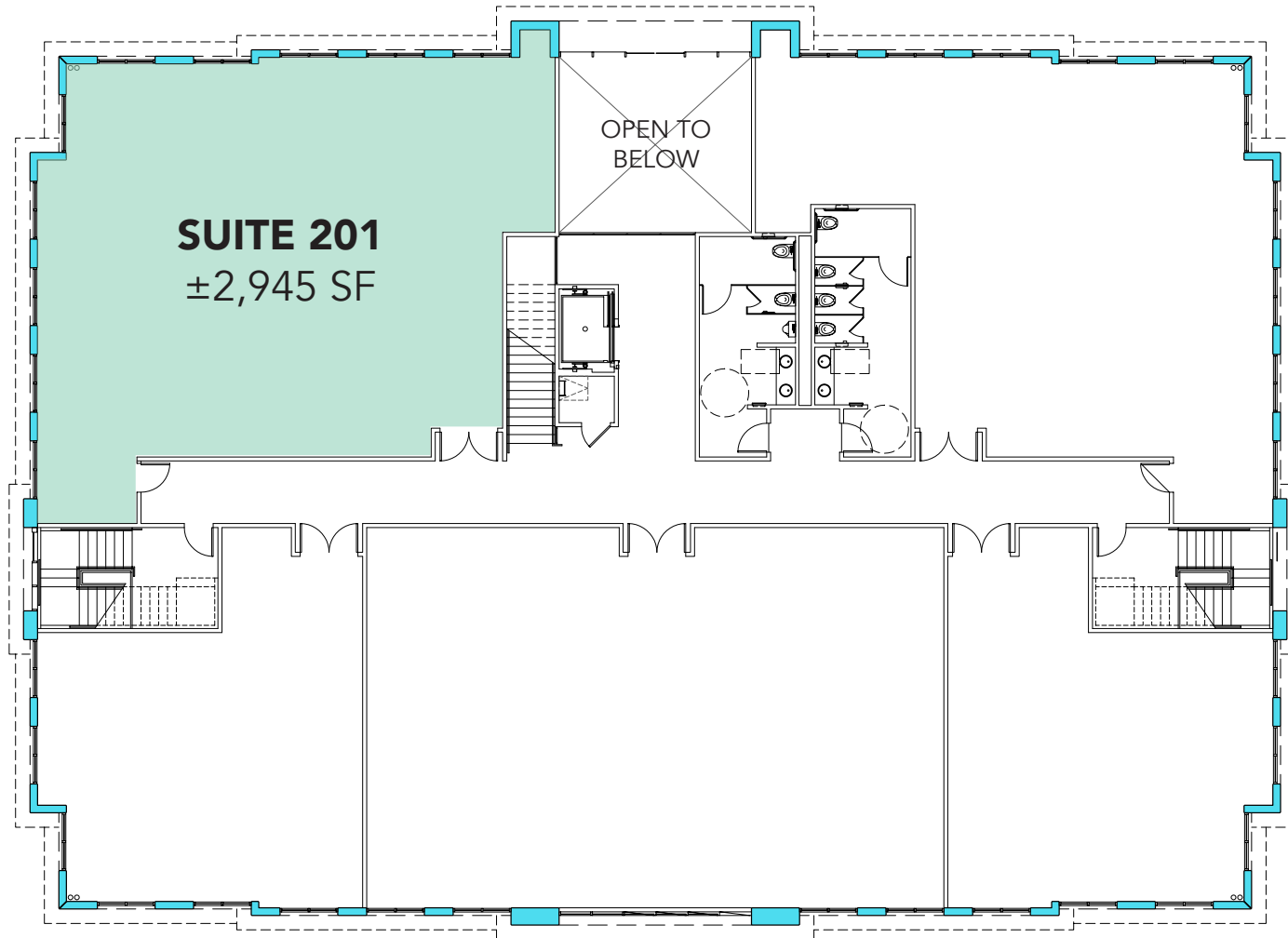


**KYLEE KING**  
Vice President  
Lic. #02101275  
949.790.3108  
kking@leeirvine.com



# 2083 COMPTON AVE, STE 201

## 2ND FLOOR FLOORPLAN



**LEE & ASSOCIATES**  
COMMERCIAL REAL ESTATE SERVICES

**OC**  
OFFICE GROUP

The information contained herein has been obtained from the property owner or other third party and is provided to you without verification as to accuracy. We (Lee & Associates, its brokers, employees, agents, principals, officers, directors and affiliates) make no warranty or representation regarding the information, property, or transaction. You and your attorneys, advisors and consultants should conduct your own investigation of the property and transaction.

**ALLEN BASSO**  
Senior Vice President  
Lic. #01298152  
949.790.3130  
abasso@leeirvine.com

**ERIC DARNELL**  
Senior Vice President  
Lic. #01888743  
949.460.3681  
edarnell@leeirvine.com

**KYLEE KING**  
Vice President  
Lic. #02101275  
949.790.3108  
kking@leeirvine.com

# AERIAL



CALIFORNIA  
91



INTERSTATE  
15

