



## FOR SALE OR LEASE

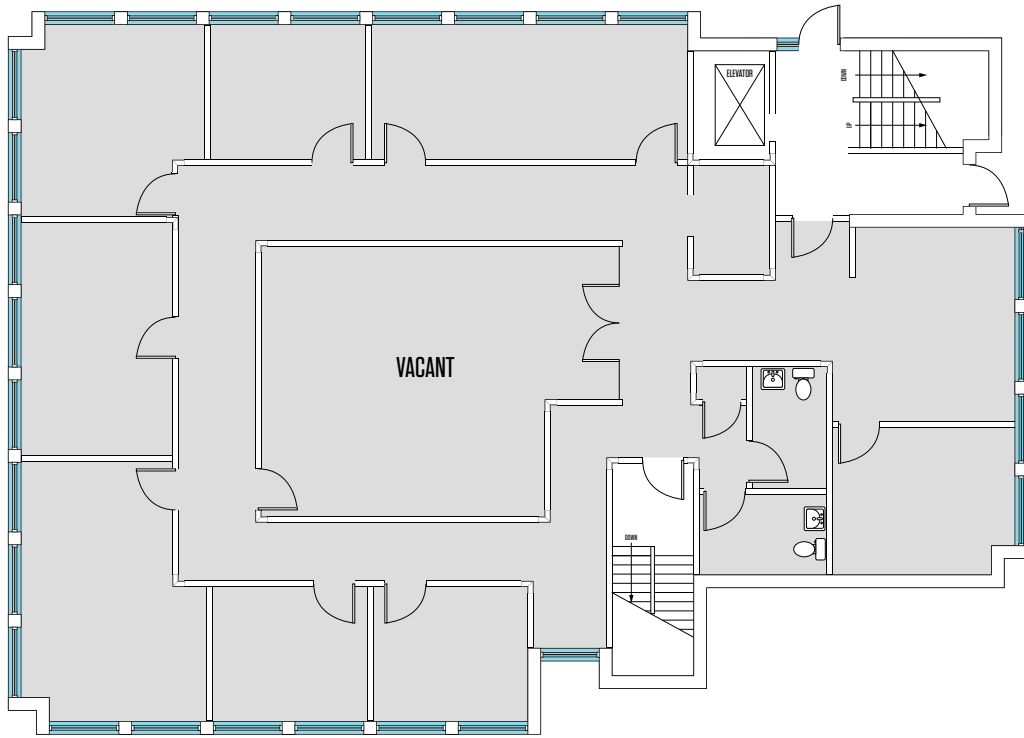
### PROPERTY HIGHLIGHTS:

- Located in the heart of Towson, MD with easy access to I-695 Beltway, I-83 and I-95
- Easy walk to Towson Town Center
- Spectacular views
- Abundance of windowed offices
- 56 free surface parking spaces
- Full service lease terms
- Up to 7,200 SF Available
- Multiple single office suites of  $\pm 100$  SF to  $\pm 200$  SF available



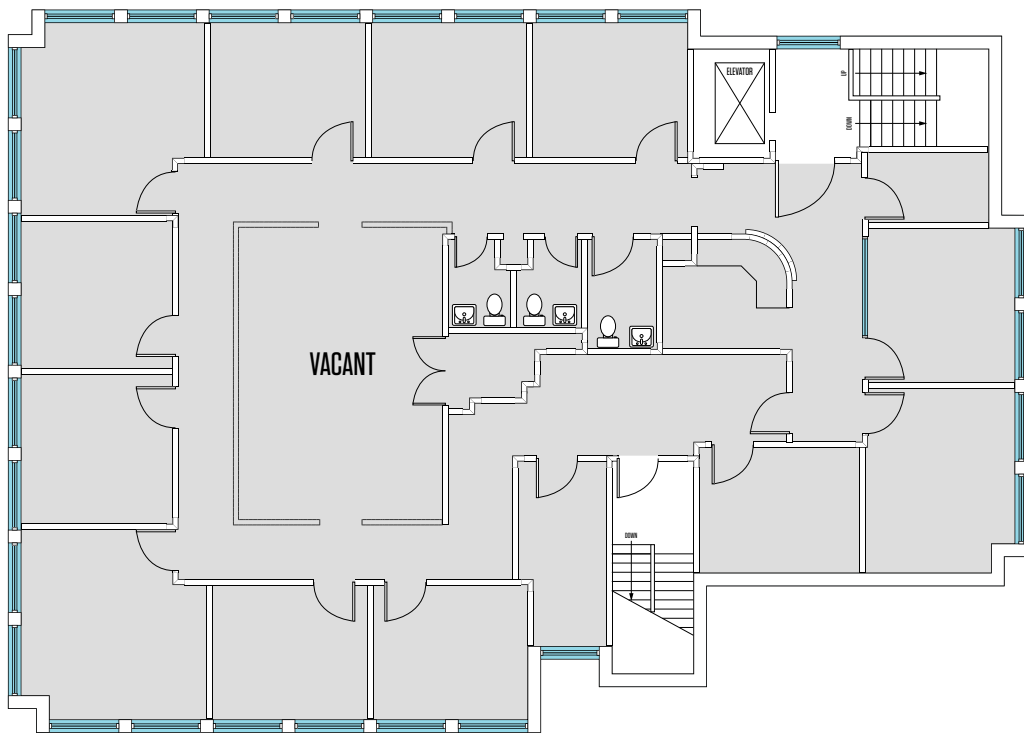
## FLOOR PLAN: 1ST FLOOR

---



## FLOOR PLAN: 3RD FLOOR

---



# PHOTOS



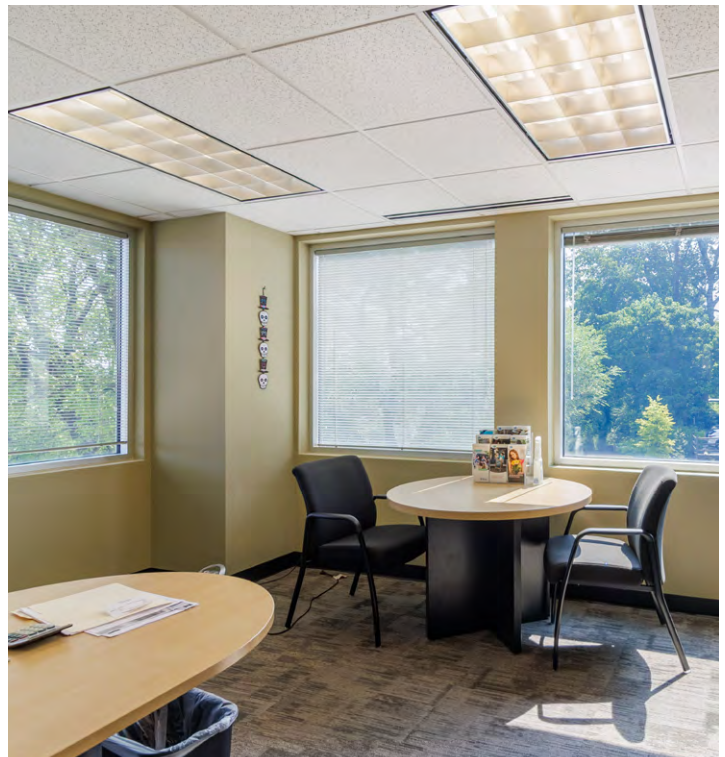
**CONFERENCE ROOM**



**RECEPTION AREA**



**WINDOWED CONFERENCE ROOM**



**CORNER OFFICE**

# 400 E. JOPPA ROAD

Towson, MD 21286



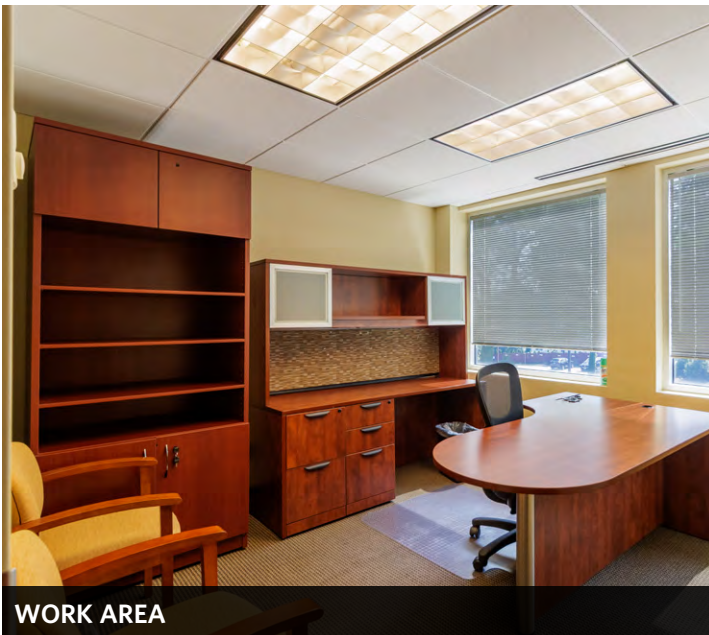
## PHOTOS



**RECEPTION AREA**



**WINDOWED CONFERENCE ROOM**



**WORK AREA**



**KITCHEN**

While we have no reason to doubt the accuracy of any of the information supplied, we cannot, and do not, guarantee its accuracy. All information should be independently verified prior to a purchase or lease of the property. We are not responsible for errors, omissions, misuse, or misinterpretation of information contained herein and make no warranty of any kind, express or implied, with respect to the property or any other matters.