

Office Space For Lease

2741 Middlefield Road
Palo Alto, CA

±8,253 Square Feet (Divisible)



Derek Cuschieri
+1.408.913.6912
derek.cuschieri@avisonyoung.com
License No. 02035183

Todd Campbell
+1.650.425.6412
todd.campbell@avisonyoung.com
License No. #02037589

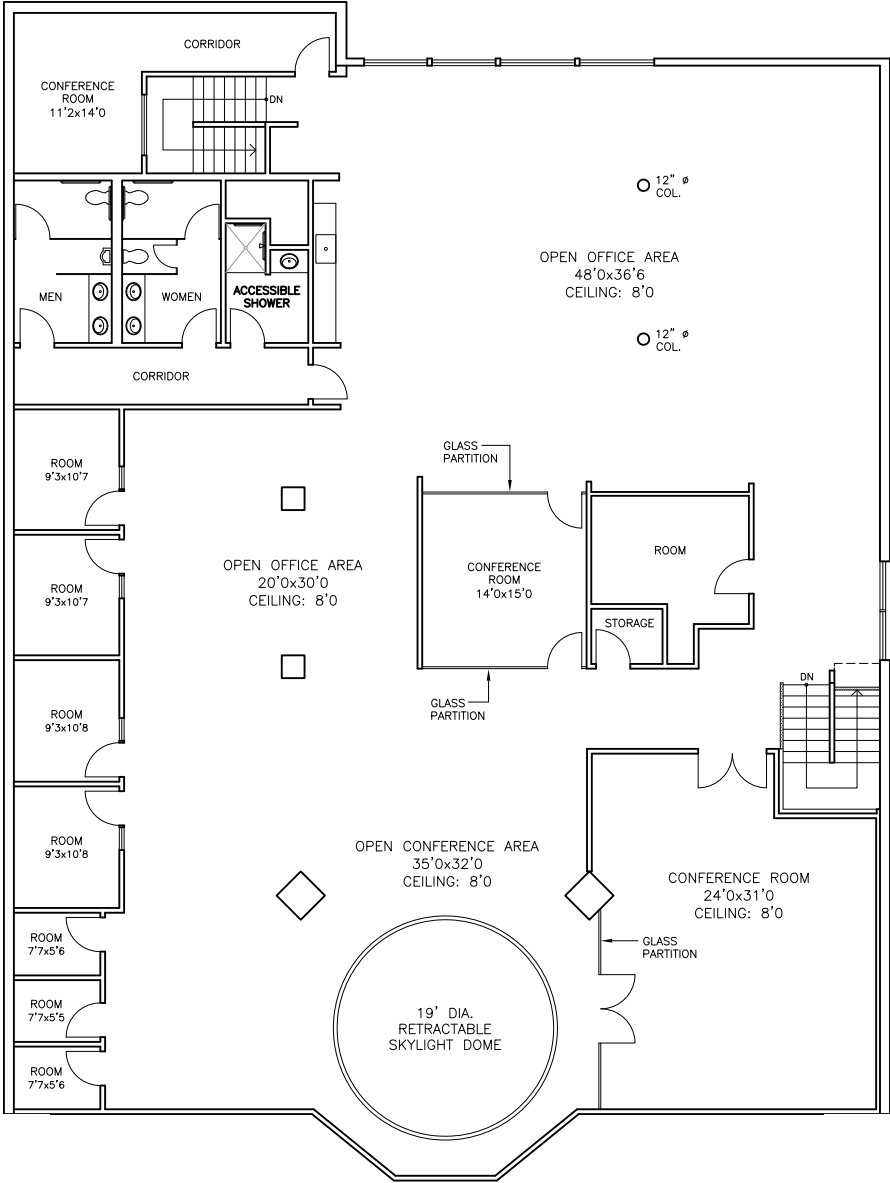
**AVISON
YOUNG**

Property details

- ±8,253 Square Feet (Divisible)
- Located in Midtown Palo Alto Center
- Reserved on-site parking spaces
- 72-hour public parking behind entrance to the suite
- 2 conference rooms & 8 private offices
- Large open office areas throughout suite
- Large windows and skylights to bring in natural lighting
- Retractable skylight dome above open office
- In-suite kitchenette & restrooms with private shower
- Surrounded by restaurants and amenities
- Easy access to Hwy 101 & Oregon Expressway

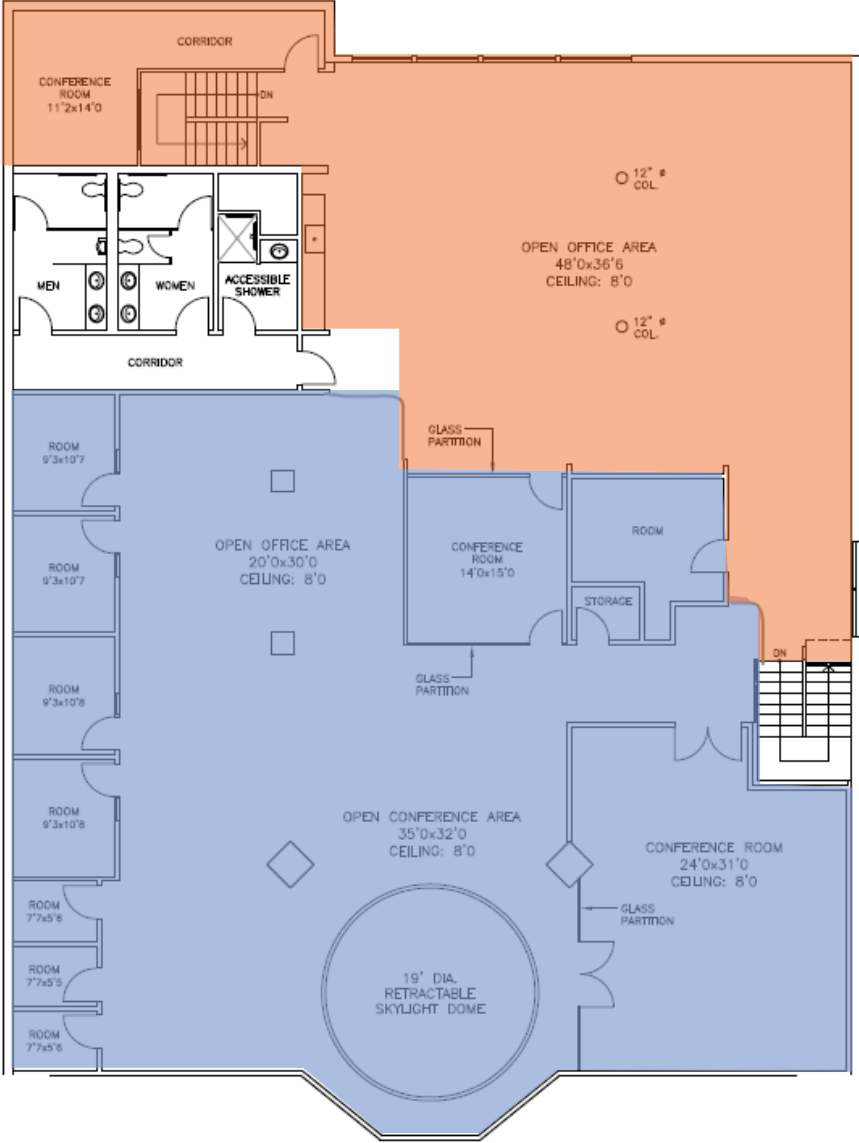


Floorplan - existing layout (single tenant)

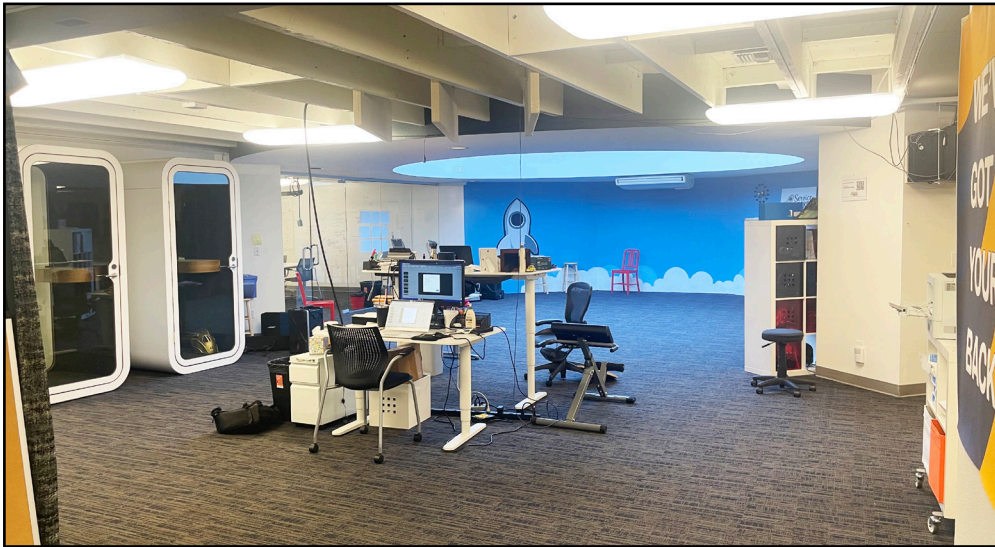


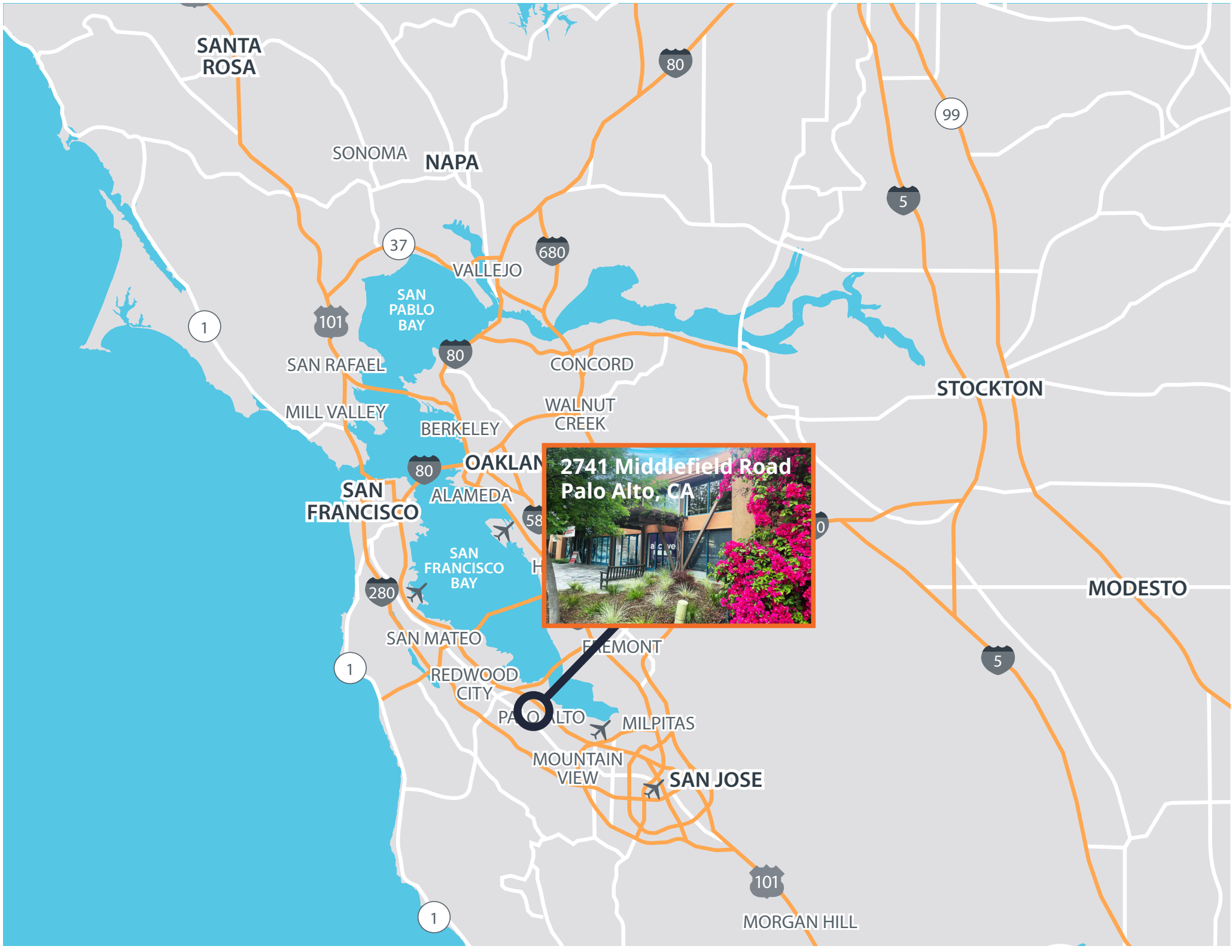
SUITE #3

Floorplan - demising plan (two tenants)

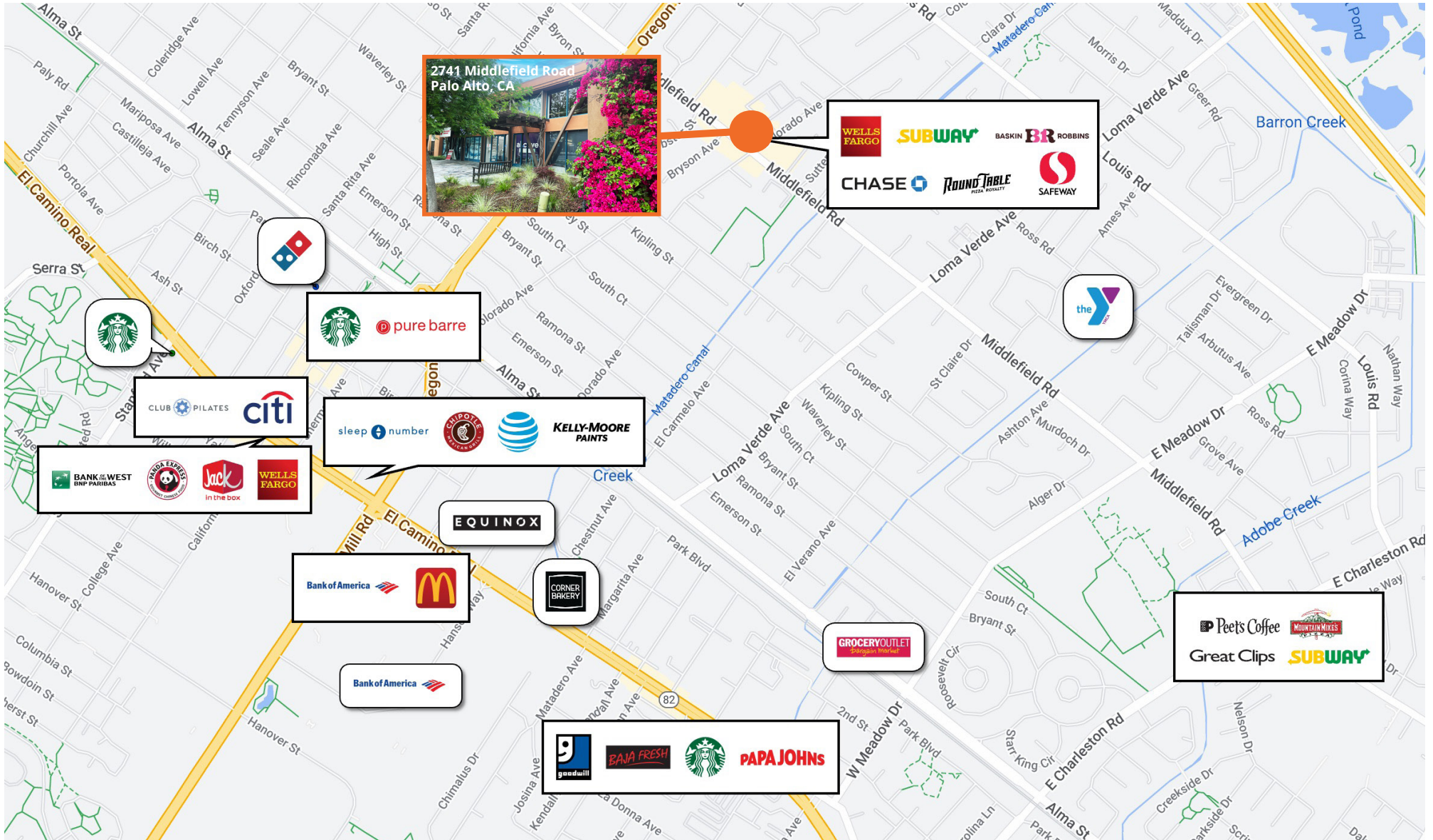


SUITE #3





Amenities aerial

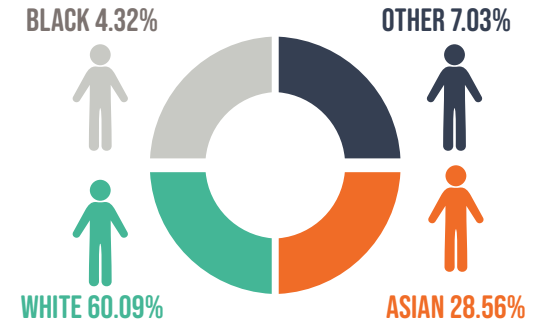


Demographics

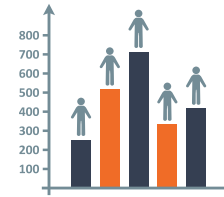


MEDIAN AGE
42
MEDIAN HOME VALUE
\$698,122

POPULATION BY RACE



HOUSEHOLDS **95,563**



AVERAGE HH INCOME
\$183,007

Average Household Size: **2.60**

Owner Occupied Housing Units: **66,955**

Renter Occupied Housing Units: **48,080**

Median Household Income: **\$166,275**

	1 Mile	3 Mile	5 Mile	
Population	2028 Projection	22,887	143,785	253,115
	2023 Estimate	23,623	146,775	259,313
	2010 Census	23,734	137,629	245,788
	Growth 2020-2025	-3.12%	-2.04%	-2.39%
	Growth 2010-2020	-0.47%	6.65%	5.50%