

Office Space **AVAILABLE** FOR LEASE

1800 30th Street

Bakersfield, CA

Property Features

- Located between "F" and "H" Streets at the Golden State Freeway in beautiful Westchester
- Abundant parking - a unique feature for the downtown area
- Centralized location with convenient access to major freeways
- Close to restaurants, retail, legal and medical services
- Professionally maintained and managed by M.D. Atkinson Co., Inc.
- Flexible suite sizes and configurations available
- Monument signage available




WESTCHESTER
CORPORATE PLAZA
1800 30TH ST.

The information contained herein may have been obtained from sources other than ASU Commercial. We have not verified such information and make no guarantees, warranties or representations about such information. It is your responsibility to independently confirm its accuracy and completeness prior to purchasing/leasing the property.



Martin J. Starr ▪ Principal ▪ 661 616 3567 ▪ mjstarr@asuassociates.com ▪ CA RE #01179469
Matthew E. Starr, SIOR, CCIM ▪ Principal ▪ 661 616 3570 ▪ matthew@asuassociates.com ▪ CA RE #01367855
11601 Bolthouse Drive Suite 110 ▪ Bakersfield, CA 93311 ▪ 661 862 5454 main ▪ 661 862 5444 fax

Office Space Available For Lease

Availability | First Floor Stacking Plan

1800 30th Street - Bakersfield, CA

Available Space

First Floor

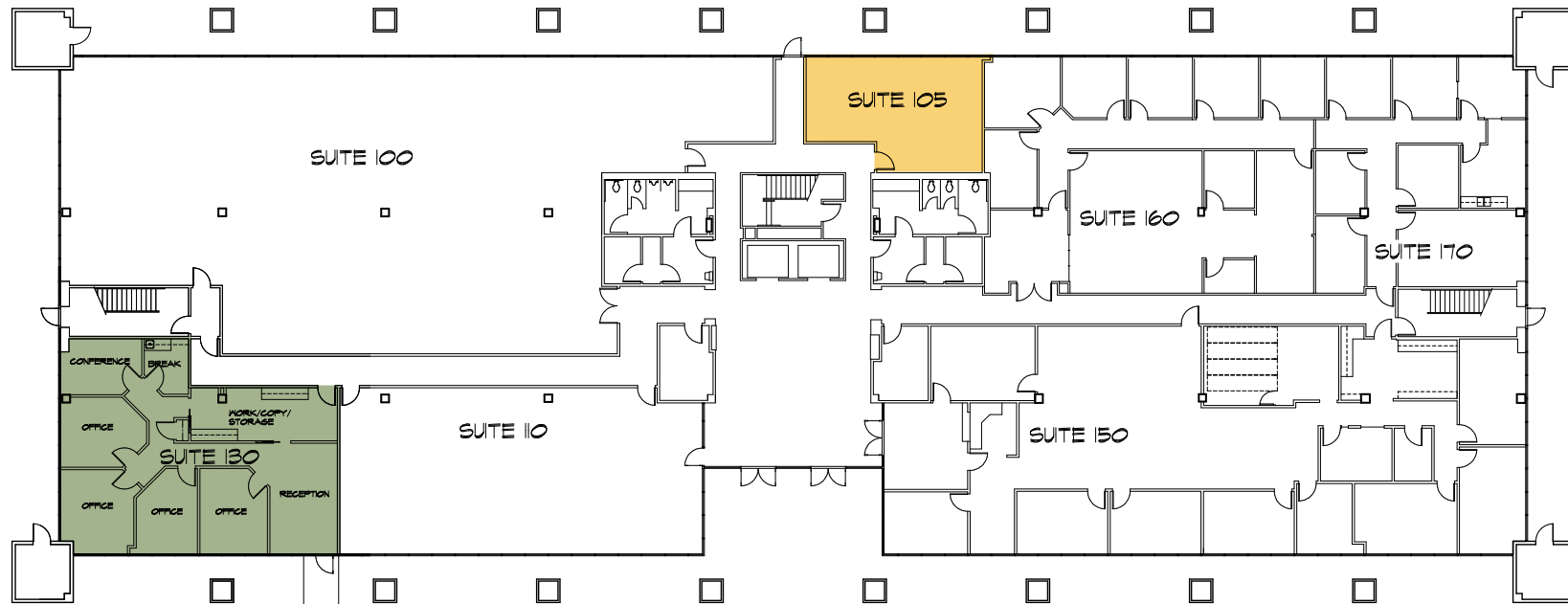
- Suite 105 619 SF
- Suite 130 1,754 SF - Features direct entry from the exterior of the building with access to interior common area.

Lease Rate

- \$1.65 PSF (excluding utilities and janitorial services)

Tenant Improvements

- Negotiable subject to terms of lease



*Plans deemed to be accurate, but not guaranteed. Plan not to scale.

Office Space Available For Lease

Availability | Second & Third Floor
Stacking Plans

1800 30th Street - Bakersfield, CA

Available Space

Second Floor

- Suite 215 1,413 SF
- Suite 220 1,480 SF
- Suite 230 1,745 SF
- Suite 280 4,519 SF
- Suite 290 3,376 SF

*Suites 215-220-230 can be combined for 4,638 SF

Third Floor

- Suite 300 3,576 SF
- Suite 310 2,248 SF
- Suite 320 2,282 SF
- Suite 330 1,694 SF
- Suite 350 2,293 SF

*Up to 9,811 contiguous square feet on the 3rd Floor

Lease Rate

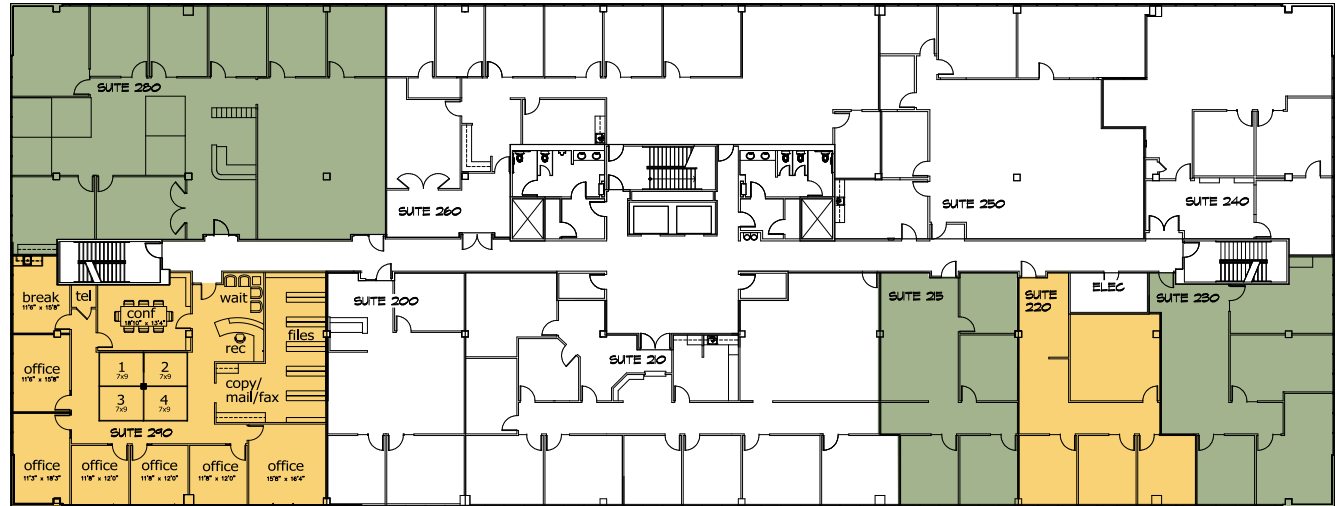
- \$1.65 PSF (excluding utilities and janitorial services)

Tenant Improvements

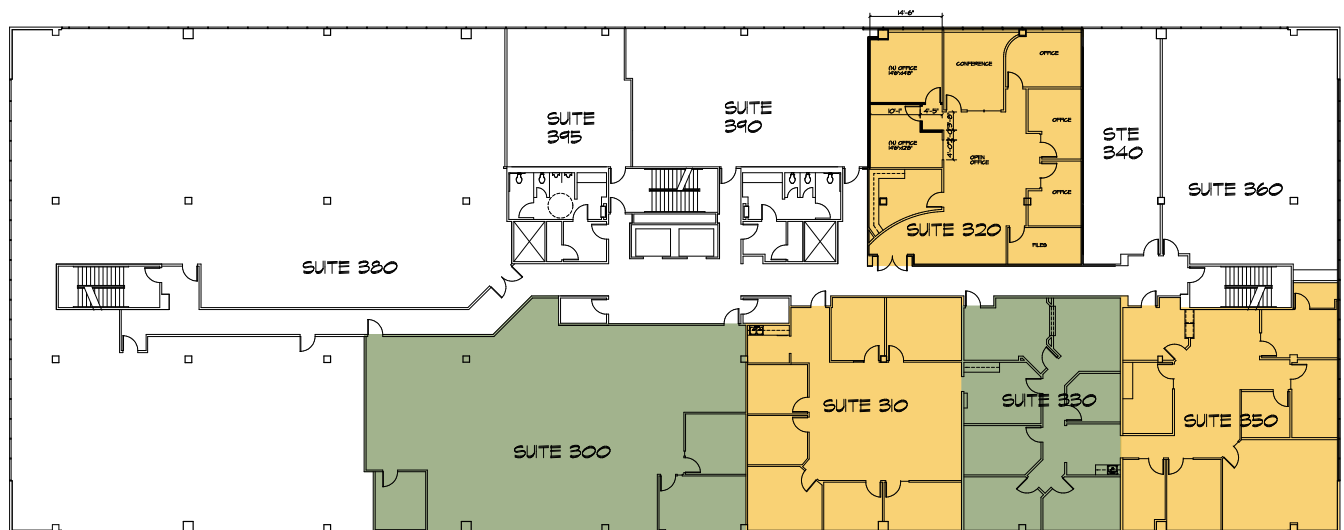
- Negotiable subject to terms of lease

Existing Tenants Include

- The Law Offices of Young Wooldridge, LLP
- Hanna, Brophy, MacLean, McAleer & Jensen
- Ruetters & Schuler Civil Engineers
- Kern County Farm Bureau



Second Floor



Third Floor

*Plans deemed to be accurate, but not guaranteed. Plan not to scale.

Office Space Available For Lease

Availability | Fourth Floor
Stacking Plan

1800 30th Street - Bakersfield, CA

Available Space

Fourth Floor

- Suite 400 21,993 SF

Fourth floor features covered exterior perimeter corridor

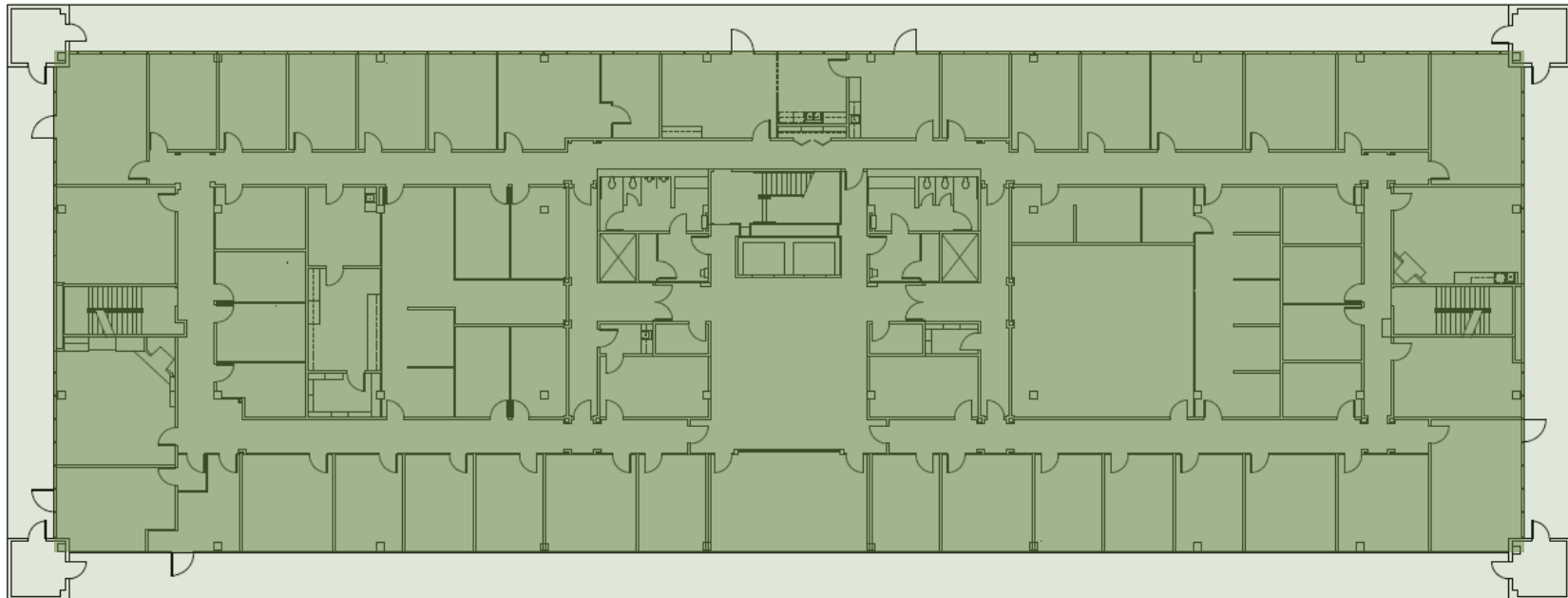
**Divisible to approximately 10,000 SF*

Lease Rate

- \$1.65 PSF (excluding utilities and janitorial services)

Tenant Improvements

- Negotiable subject to terms of lease



**Plans deemed to be accurate, but not guaranteed. Plan not to scale.*

Office Space Available For Lease

Building Lobby & Directory
Photos

1800 30th Street - Bakersfield, CA



WESTCHESTER
CORPORATE PLAZA
1800 30TH ST.



Westchester Plaza

Law Offices of Young Wooldridge, LLP

Including Professional Corporations Specializing in

- Personal Injury Litigation
- Business Law
- Water Law
- Trust & Probate
- Group Legal Services

Scott K. Kuney
Steven M. Torigiani
Jerry W. Pearson
Ned E. Dunphy
Robert J. Noriega
Thomas A. Brill
Mark R. Bateman
Alan Doud
Kevin Danley
Brett Stroud
Lauren Naworski-Smith
Mohammed Basharaheel
Michael A. Kala of Counsel
John Young (1913-2003)
Joseph Wooldridge (1913-1996)
A. Cameron Paulden (1927-1984)
Robert J. Self (1932-2009)
G. Neil Farr (1932-2012)

Marlene Morales, Public Relations/Marketing
Eisa Slaughter - Controller
Law Offices of Leonard K. Welsh
Law Offices of Kathilee Welsh

FOURTH FLOOR

For leasing information contact ASU Commercial at 661-862-5454

Bakersfield	Tomorrow	Wed	Thu	Fri
89°F	89° / 68°	90° / 67°	89° / 67°	86° / 65°
Sunny				



Martin J. Starr • Principal • 661 616 3567 • mjstarr@asuassociates.com • CA RE #01179469
 Matthew E. Starr, SIOR, CCIM • Principal • 661 616 3570 • matthew@asuassociates.com • CA RE #01367855
 11601 Bolthouse Drive Suite 110 • Bakersfield, CA 93311 • 661 862 5454 main • 661 862 5444 fax

Office Space Available For Lease

Property Photos

1800 30th Street - Bakersfield, CA



Office Space Available For Lease

Downtown Aerial Location Map

1800 30th Street - Bakersfield, CA



1800 30th Street