

# 359 Nostrand Ave

Presented by  
Gayle Vault

359 Nostrand Ave, Brooklyn, NY 11216



## Price: \$21.42 /SF/YR

Position your business for success in the heart of Bedford-Stuyvesant, one of Brooklyn's most dynamic and rapidly growing neighborhoods. This high-visibility storefront sits directly on Nostrand Ave, a bustling main road known for its constant foot traffic, strong community presence, and daily exposure to thousands of passersby.

Conveniently located near the A, C, and G trains, the property offers seamless connectivity to Manhattan and the rest of Brooklyn—making it an ideal choice for clients, customers, and staff alike.

This turnkey commercial space is thoughtfully designed and fully equipped, featuring:

- DDA-compliant wheelchair and disability access ramps
- Modern security system with cameras installed
- Professional reception area and private office space
- Prominent front billboard signage ready for branding and visibility
- Clean, move-in-ready interior suited for immediate occupancy

Perfect for financial services, professional offices, or high-end service-oriented businesses, this property offers both prestige and practicality in one of Brooklyn's most sought-after corridors.

# 359 Nostrand Ave

359 Nostrand Ave, Brooklyn, NY 11216



**Prime Bed-Stuy Location:** Situated on Nostrand Avenue, a major commercial corridor that's densely populated, high-activity area and vehicle traffic

**Exceptional Visibility:** Large storefront presence with billboard signage already installed — ideal for brand exposure

**Transit Accessibility:** Steps away from the A, C, and G trains, offering direct access to Manhattan and throughout Brooklyn.

**Move-In Ready:** Fully equipped with reception area, private office space, and a modern interior layout.

**DDA-Compliant:** Features wheelchair and disability access ramps for full accessibility.

**Enhanced Security:** Outfitted with a camera and alarm system for peace of mind.

## Rodmon Gayle

[rodmongayle@gmail.com](mailto:rodmongayle@gmail.com)  
(347) 885-9759

## Gayle Vault

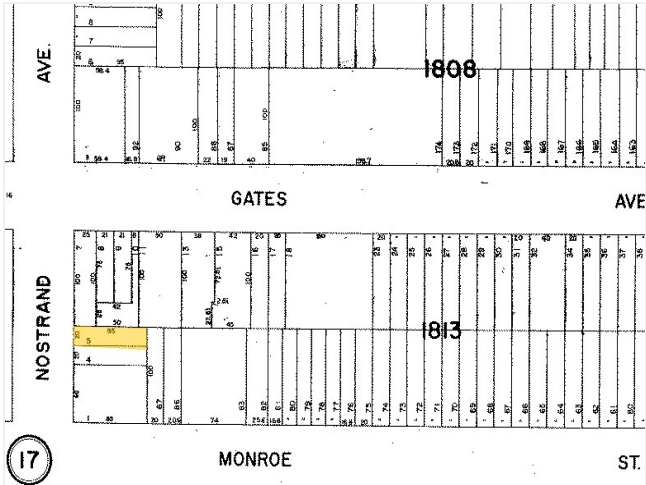
359 Nostrand Ave  
Brooklyn, NY 11216

# 359 Nostrand Ave

359 Nostrand Ave, Brooklyn, NY 11216

# 359 Nostrand Ave

359 Nostrand Ave, Brooklyn, NY 11216



Plat Map

## Major Tenant Information

Tenant	SF Occupied	Lease Expired
King Kwok Restaurant	-	
Pay-O-Matic	-	
Pompei Capital	-	



IMG\_9500

359 Nostrand Ave, Brooklyn, NY 11216



IMG\_9501

## Listing space

### 1st Floor

Space Available	2,800 SF
Rental Rate	\$21.42 /SF/YR
Date Available	Now
Service Type	Modified Gross
Built Out As	Financial Services
Space Type	Relet
Space Use	Office
Lease Term	1 - 10 Years

Corner office space featuring plug & play setup, open-plan layout, and partitioned offices. Includes private restrooms, reception, secure storage, and conference rooms. Enhanced with natural light, hardwood floors, and full HVAC coverage including after-hours availability. Safety and accessibility supported by CCTV, emergency lighting, smoke detectors, and full DDA compliance.

# 359 Nostrand Ave

359 Nostrand Ave, Brooklyn, NY 11216

## Property Photos



IMG\_9505



IMG\_9509

# 359 Nostrand Ave

359 Nostrand Ave, Brooklyn, NY 11216

## Property Photos



IMG\_9510



IMG\_9508

# 359 Nostrand Ave

359 Nostrand Ave, Brooklyn, NY 11216

## Property Photos



IMG\_9513



IMG\_9512

# 359 Nostrand Ave

359 Nostrand Ave, Brooklyn, NY 11216

## Property Photos



IMG\_9516



IMG\_9517

# 359 Nostrand Ave

359 Nostrand Ave, Brooklyn, NY 11216

## Property Photos



IMG\_9515



IMG\_9519

# 359 Nostrand Ave

359 Nostrand Ave, Brooklyn, NY 11216

## Location

