

**FOR LEASE**  
±10,960 SF AVAILABLE

**10681 PULLMAN CT**  
RANCHO CUCAMONGA, CA 91730

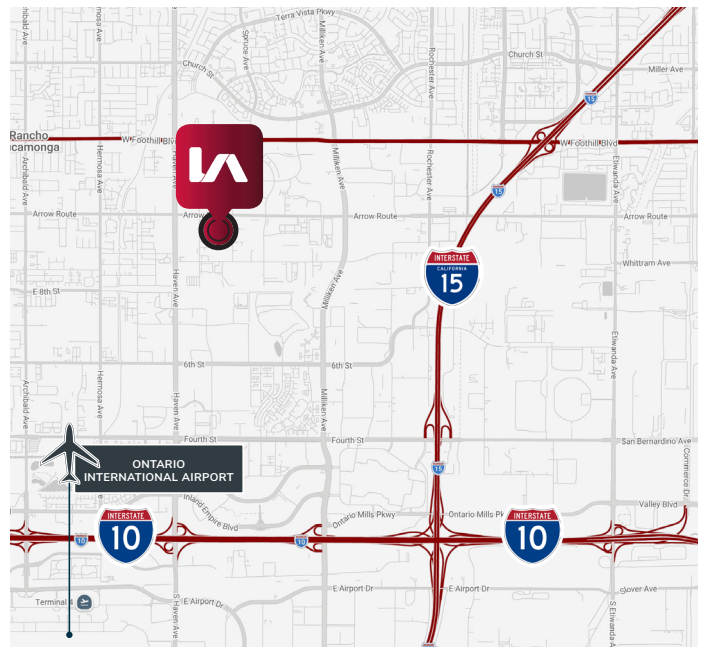
**\$1.25 Gross PSF**  
**(No CAM)**



## PROPERTY HIGHLIGHTS

- ±10,960 Total SF Available
- ±1,700 SF of Office Space
- (2) 12' x 12' Ground Level Doors
- Gated and Secured Yard Area
- 600 Amps; 120/208V, 3-Phase (Verify)
- 16' Clear Height
- 36' x 36' Column Spacing
- 22 Parking Spaces
- Fire Sprinkler System (.23 density over 2,000 SF)

## LOCATION MAP



**DANIEL GLAZER**  
D (909) 373-2731  
dglazer@lee-assoc.com  
DRE #01958796

**HANK WIEHEBRINK**  
D (909) 373-2712  
hank@lee-assoc.com  
DRE #02221409

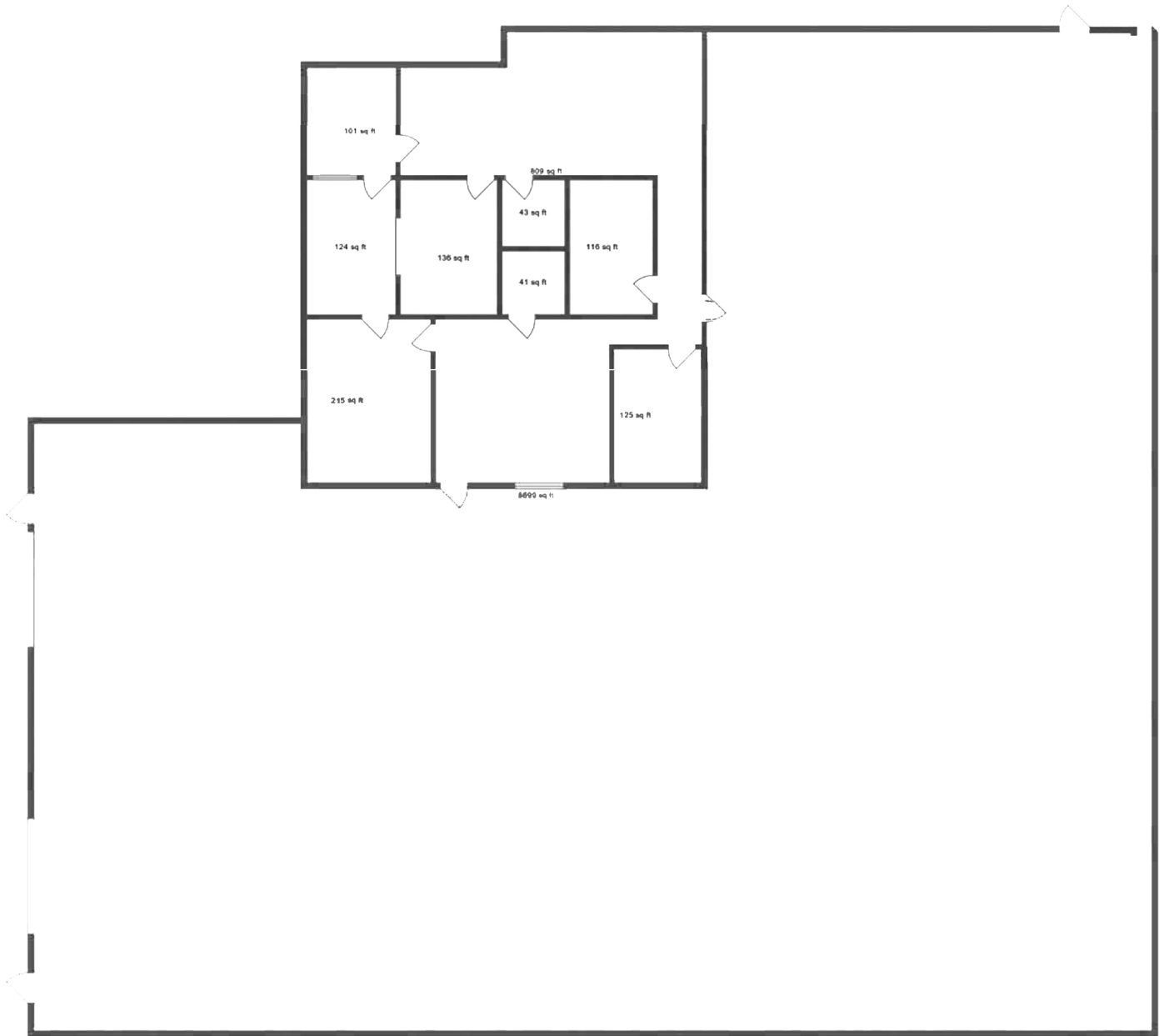
**LEE & ASSOCIATES - ONTARIO**  
3535 Inland Empire Boulevard  
Ontario, CA 91764  
(909) 989-7771  
Corporate ID: 00976995

**LEE & ASSOCIATES**  
COMMERCIAL REAL ESTATE SERVICES

**FOR LEASE**  
**±10,960 SF AVAILABLE**

**10681 PULLMAN CT**  
**RANCHO CUCAMONGA, CA 91730**

**FLOOR PLAN**



**DANIEL GLAZER**  
D (909) 373-2731  
dglazer@lee-assoc.com  
DRE #01958796

**HANK WIEHEBRINK**  
D (909) 373-2712  
hank@lee-assoc.com  
DRE #02221409

**LEE & ASSOCIATES - ONTARIO**  
3535 Inland Empire Boulevard  
Ontario, CA 91764  
(909) 989-7771  
Corporate ID: 00976995

**LEE & ASSOCIATES**  
COMMERCIAL REAL ESTATE SERVICES