

1706

FIFTH AVENUE

SAN DIEGO, CA 92101



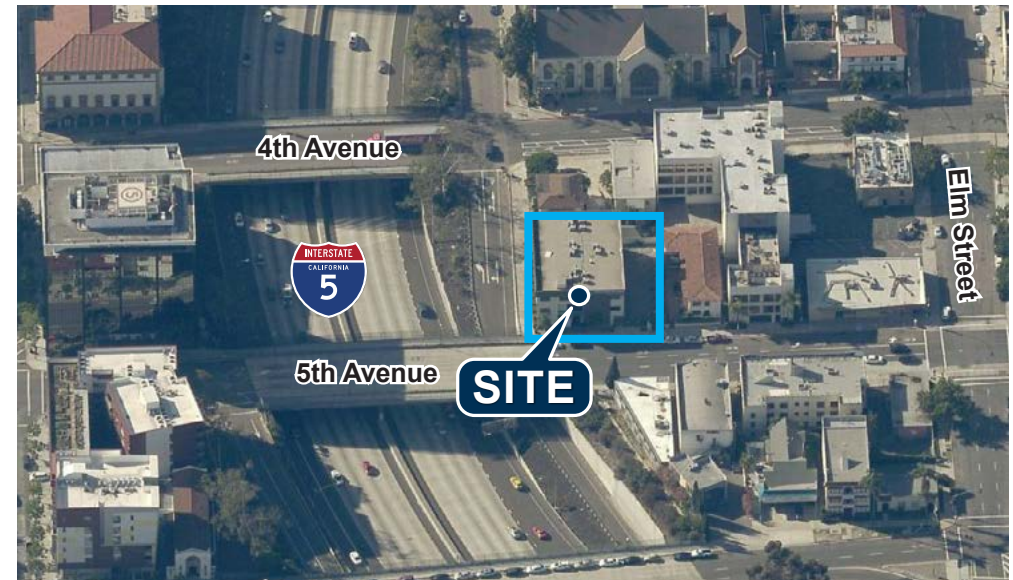
FOR LEASE | ±684 to ±3,134 SF of Office Space in Downtown

ASKING RATE:

- » \$1.90 + Electricity PSF/Mo.

PROJECT FEATURES:

- » Premiere Downtown location
- » Excellent freeway access
- » Close proximity to public transportation
 - » Amtrak, Coaster, Trolley & Bus Stations within walking distance
- » Extensive retail amenities in area
- » Ideal for offices/classroom use
- » Parking can be available
- » Variety of office sizes available
- » Shared break area facilities



GARRETT FENA, SIOR | 858.458.3318 | gfena@voitco.com | Lic. #01919122

4180 La Jolla Village Dr., Suite 100, San Diego, CA 92037 • 858.453.0505 • 858.408.3976 Fax • Lic #01991785 | www.voitco.com

Voit

REAL ESTATE SERVICES

1706

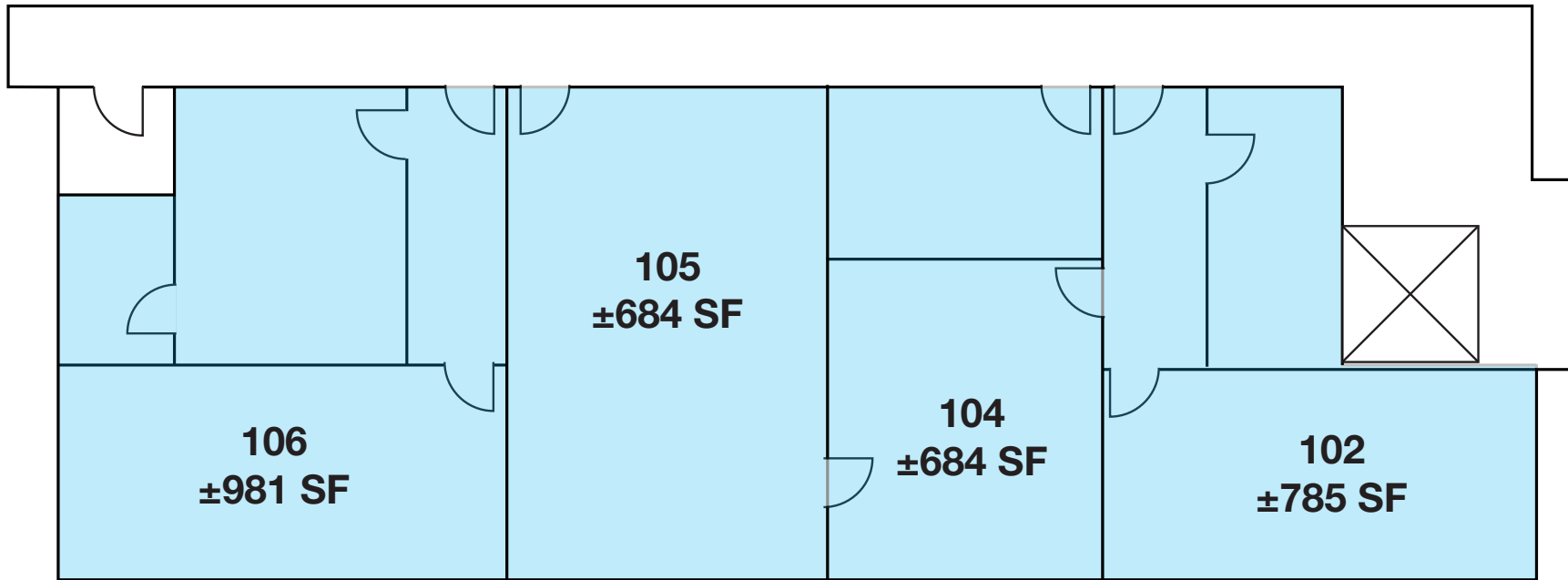
FIFTH AVENUE

SAN DIEGO, CA 92101

FOR LEASE

±684 to ±3,134 SF of Office Space in Downtown

FIRST FLOOR AVAILABILITY



SUITE #	SIZE	RATE/SF	COMMENTS
102*	±785 SF	\$1.90 + Electricity	One Office / Storage
104*	±684 SF	\$1.90 + Electricity	Two Offices
105*	±684 SF	\$1.90 + Electricity	Two Offices
106*	±981 SF	\$1.90 + Electricity	Open Area / Storage

*Can Be Combined for 3,134 SF

GARRETT FENA, SIOR | 858.458.3318 | gfena@voitco.com | Lic. #01919122

Voit

REAL ESTATE SERVICES

1706

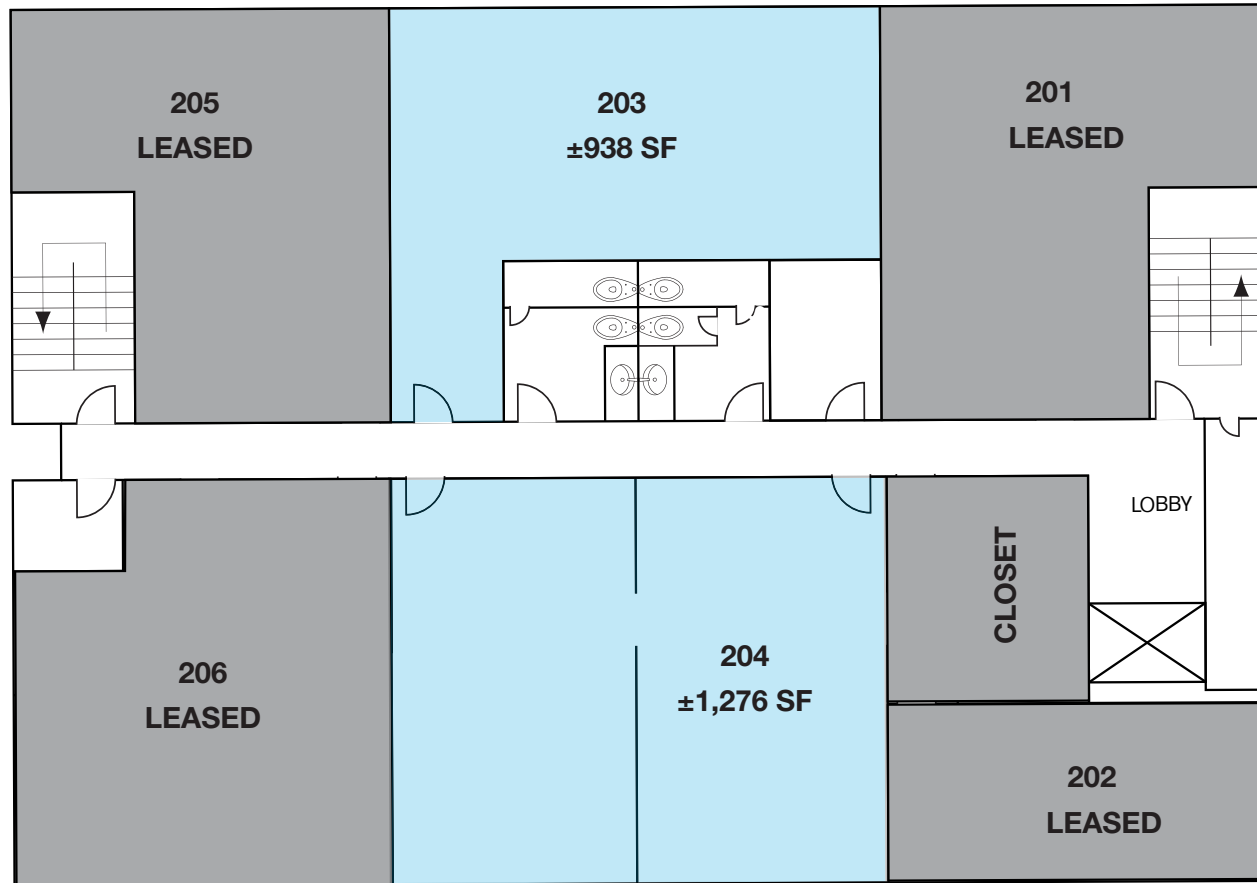
FIFTH AVENUE

SAN DIEGO, CA 92101

FOR LEASE

±684 to ±3,134 SF of Office Space in Downtown

SECOND FLOOR AVAILABILITY



SUITE #	SIZE	RATE/SF	COMMENTS
203	±938 SF	\$1.90 + Electricity	Open area
204	±1,276 SF	\$1.90 + Electricity	Two (2) large open areas

GARRETT FENA, SIOR | 858.458.3318 | gfena@voitco.com | Lic. #01919122

Voit

REAL ESTATE SERVICES

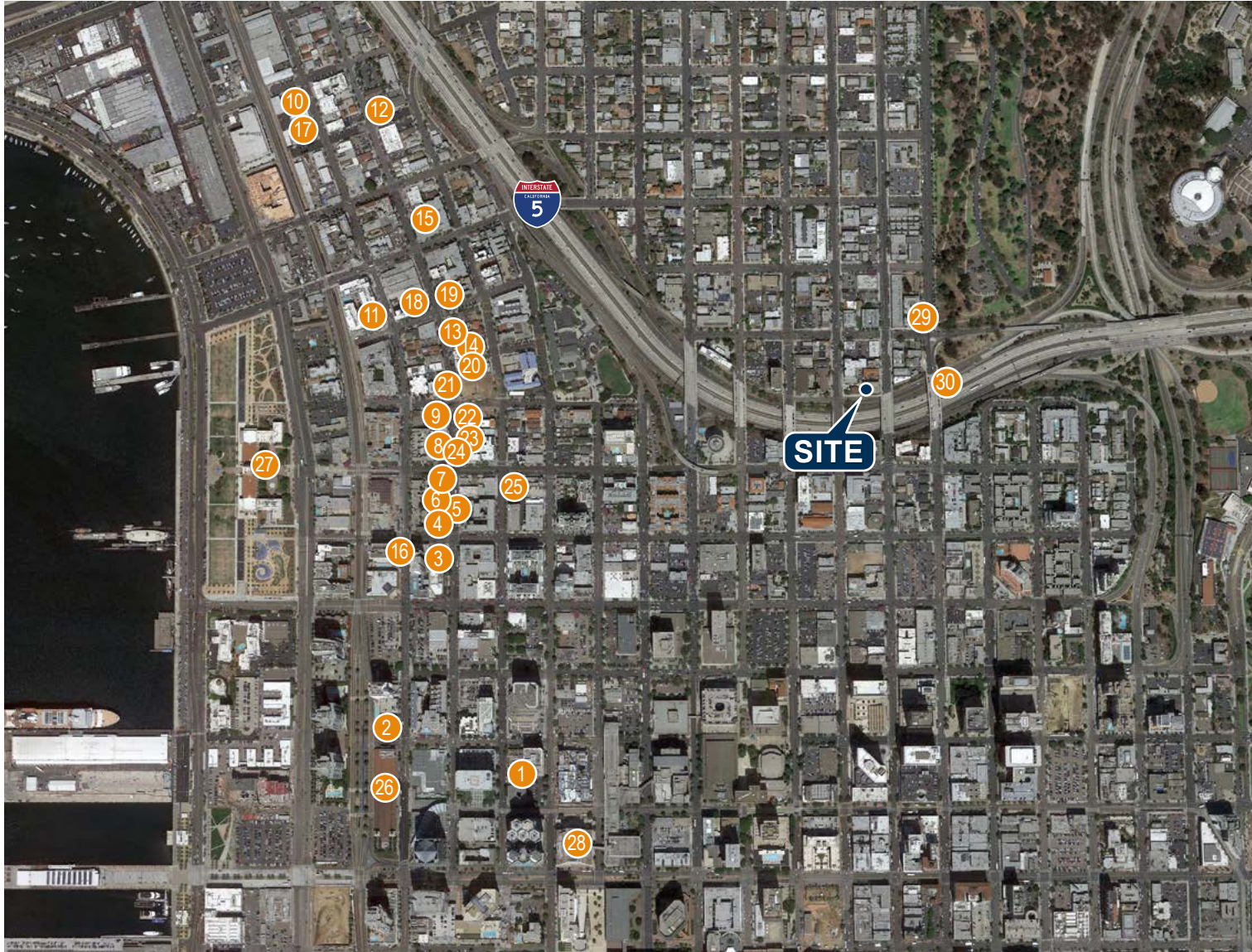
1706

FIFTH AVENUE

SAN DIEGO, CA 92101

FOR LEASE

±684 to ±3,134 SF of Office Space in Downtown



1	Karl Strauss
2	Stone Brewing
3	Craft & Commerce
4	Harbor Cafe
5	Isola Pizza Bar
6	Salon Tonic
7	Indigo Grill
8	Ironside Oyster
9	Prep Kitchen
10	The Crack Shack
11	Underbelly
12	Ballast Point
13	Landini's
14	Filippi's
15	Mona Lisa
16	Bracero
17	Juniper Ivy
18	Bencotto
19	Zias Bistro
20	Cafe Zucchero
21	NA Pizza
22	Princess Pub & Grill
23	Davanti Enoteca
24	Burger Lounge
25	Queenstown Public House
26	Santa Fe Depot
27	County Administration Building
28	County & Federal Courts
29	Horton Plaza
30	Gaslamp District

GARRETT FENA, SIOR | 858.458.3318 | gfen@voitco.com | Lic. #01919122

4180 La Jolla Village Dr., Suite 100, San Diego, CA 92037 • 858.453.0505 • 858.408.3976 Fax • Lic #01991785 | www.voitco.com

Licensed as Real Estate Salespersons and Brokers by the DRE. The information contained herein has been obtained from sources we deem reliable. While we have no reason to doubt its accuracy, we do not guarantee it. ©2025 Voit Real Estate Services, Inc. All Rights Reserved. Real People. Real Solutions.™ is a trademark of Voit Real Estate Services.