



Retail Spaces for Lease

389 Dover Chester Road

RANDOLPH, NJ 07869

Building Size: 14,000 SF

Available Space: +/- 914 SF store front
+/- 1856 SF store front with ample basement storage
+/- 1672 SF retail/office/rec space located in rear of building

Lease Rate: Store Front - \$17.00 PSF NNN
Back Space - \$13.00 PSF NNN

Details:

- Ample parking
- Small convenient retail center servicing the high household income Morris County suburban market
- Highly educated population
- Flexible layout options
- Ideal for professional and service based businesses

Location: Convenient access to Dover Chester Road and Route 10

David R. Williams
Senior Vice President
973-898-8670 direct

Cynthia La Terra
Senior Vice President
201-693-1211 cell
clattera@weichertcommercial.com

Leslie Bentley
Sales Associate
678-923-3840 cell
lbentley@weichertcommercial.com

Exclusive Broker

Weichert Commercial
Brokerage, Inc.

1625 Route 10 • Morris Plains, NJ • 973-267-7778 • weichertcommercial.com

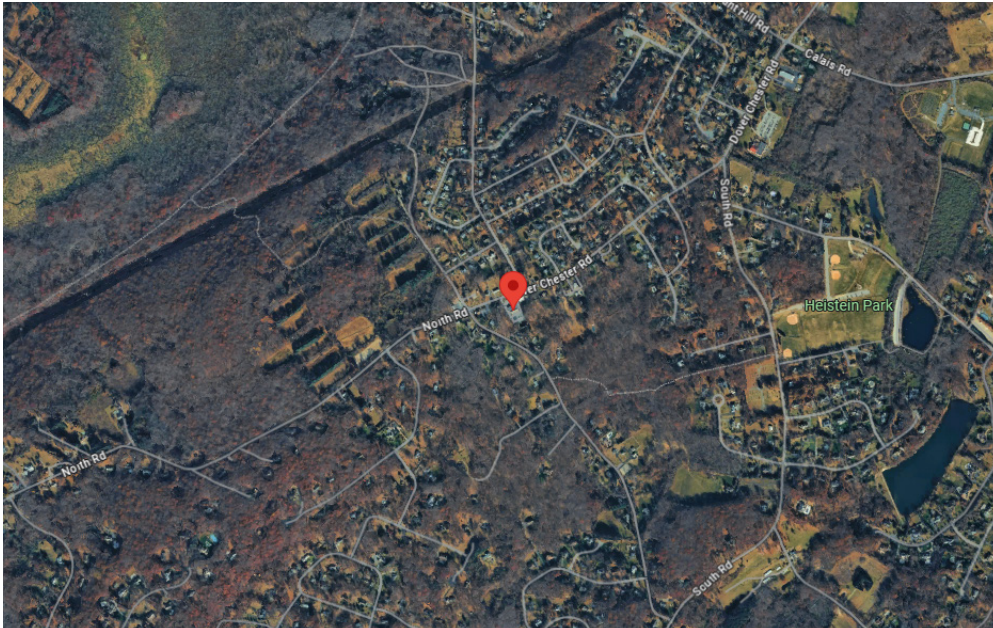
No warranty or representation, express or implied is made as to the accuracy of the information contained herein, and same is submitted subject to errors, omissions, change of price, rental or other conditions, withdrawal without notice and to any special listing conditions imposed by our principals.

389 Dover Chester Road

Photo



Aerial



Weichert Commercial
Brokerage, Inc.

1625 Route 10 • Morris Plains, NJ • 973-267-7778 • weichertcommercial.com

No warranty or representation, express or implied is made as to the accuracy of the information contained herein, and same is submitted subject to errors, omissions, change of price, rental or other conditions, withdrawal without notice and to any special listing conditions imposed by our principals.

389 Dover Chester Road

Key Facts

KEY FACTS

2,467

Population



3.1

Average Household Size

44.4

Median Age

\$227,549

Median Household Income

EDUCATION

0.9%

No High School Diploma



13.3%

High School Graduate



14.1%

Some College/ Associate's Degree



71.7%

Bachelor's/Grad/ Prof Degree

BUSINESS



38

Total Businesses



383

Total Employees

EMPLOYMENT



88.6%

White Collar



9.3%

Blue Collar



2.1%

Services

4.1%

Unemployment Rate

INCOME



\$227,549

Median Household Income



\$94,574

Per Capita Income



\$1,750,591

Median Net Worth

2025 Households by income (Esri)

The largest group: \$200,000+ (64.5%)

The smallest group: \$25,000 - \$34,999 (0.4%)

| Indicator | Value | Diff | |
|-----------------------|-------|--------|---|
| <\$15,000 | 1.5% | -2.0% | <div style="width: 100%;"><div style="width: 1.5%;"></div></div> |
| \$15,000 - \$24,999 | 5.0% | +2.1% | <div style="width: 100%;"><div style="width: 5.0%;"></div></div> |
| \$25,000 - \$34,999 | 0.4% | -2.8% | <div style="width: 100%;"><div style="width: 0.4%;"></div></div> |
| \$35,000 - \$49,999 | 1.6% | -3.2% | <div style="width: 100%;"><div style="width: 1.6%;"></div></div> |
| \$50,000 - \$74,999 | 5.5% | -4.0% | <div style="width: 100%;"><div style="width: 5.5%;"></div></div> |
| \$75,000 - \$99,999 | 2.6% | -7.2% | <div style="width: 100%;"><div style="width: 2.6%;"></div></div> |
| \$100,000 - \$149,999 | 9.0% | -9.0% | <div style="width: 100%;"><div style="width: 9.0%;"></div></div> |
| \$150,000 - \$199,999 | 9.7% | -4.0% | <div style="width: 100%;"><div style="width: 9.7%;"></div></div> |
| \$200,000+ | 64.5% | +29.8% | <div style="width: 100%;"><div style="width: 64.5%;"></div></div> |

Bars show deviation from