



EXTERIOR FACADE

25

PARK
ROW
NEW YORK CITY

A Retail Opportunity
at the Center of
the Financial District's
Expansion



CUSHMAN &
WAKEFIELD

25

14,281 SF RETAIL SPACE AVAILABLE

GROUND FLOOR

5,000 SF *DIVISIBLE | 18'9" CEILING

LOWER LEVEL

9,281 SF | 19' CEILING

- Located in one of NYC's wealthiest and fastest growing residential and retail neighborhoods
- Double height glass frontage facing City Hall Park, soaring ceilings and abundant natural light
- At the base of a 110 unit luxury residential tower
- Surrounded by NYC's best restaurants, museums, shopping, commerce, tourism and culture



25
PARK
ROW

GROUND FLOOR
LOWER LEVEL



RENDERING

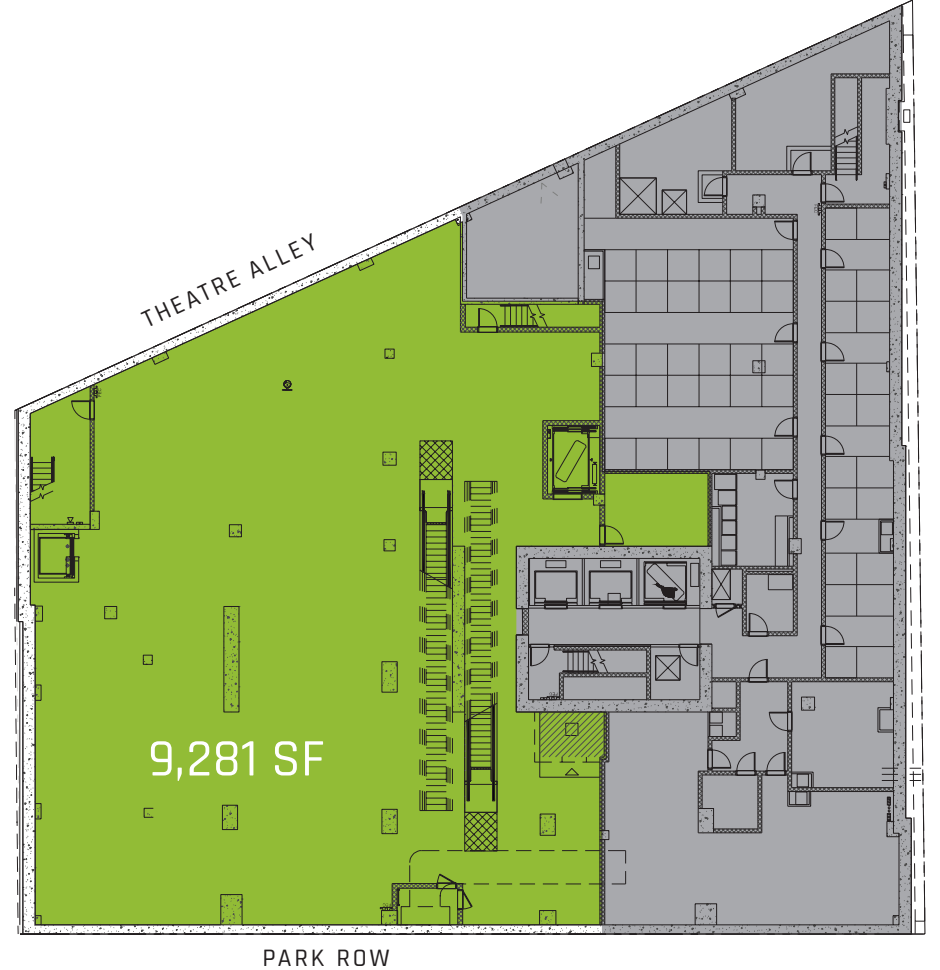
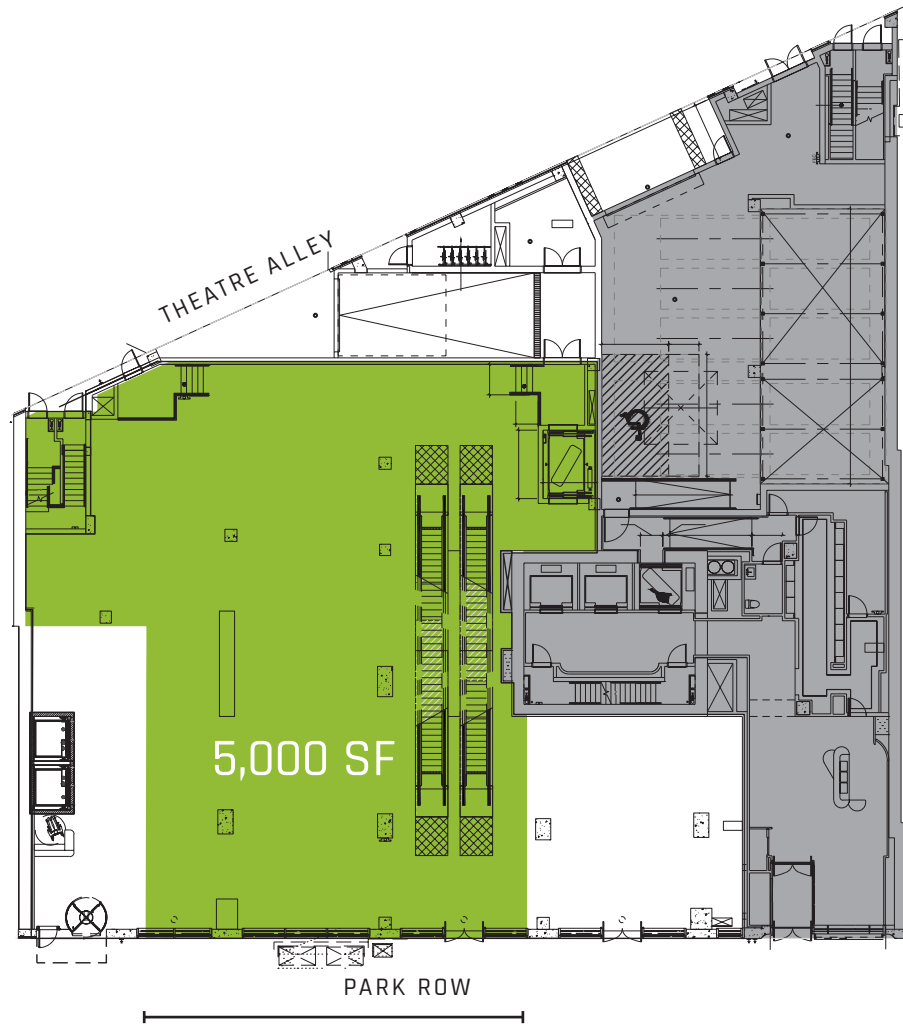


RENDERING

25 PARK ROW

GROUND FLOOR 5,000 SF | CEILING 18'9"

LOWER LEVEL 9,281 SF | CEILING 19'



OFFICE

OFFICE

LEASED BIOGRAPH

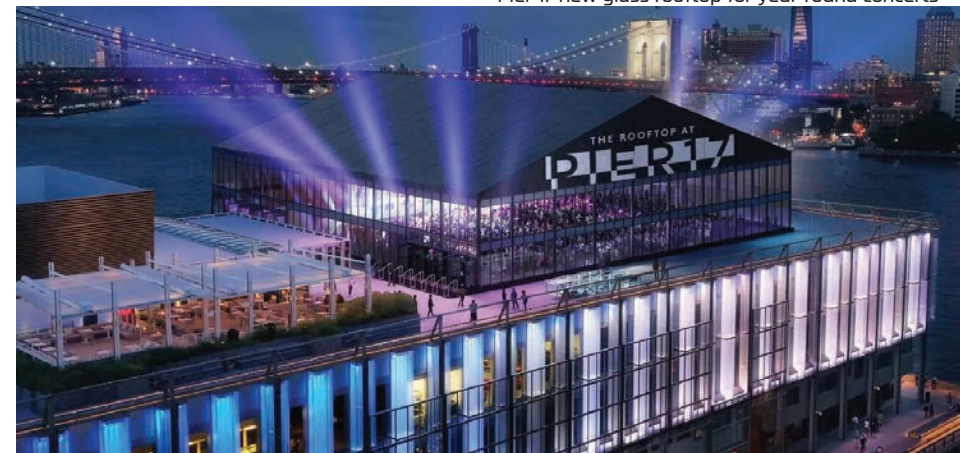
LEASED
COFFEE
SHOP

GROUND FLOOR
• 5,000 SF AVAILABLE
*DIVISIBLE
• 18'9" CEILING

LEASED
BIOGRAPH
ENTRANCE

LOWER LEVEL
• 9,281 SF AVAILABLE
• 19' CEILING

14,281 SF TOTAL



Curated French Department Store Experience: retail, beauty and wellness, dining, bars, and services

25 PARK ROW

STEPS FROM SUBWAYS

2 3 4 5 6 A C E J Z R W

5 MIN WALK

WORLD TRADE CENTER
 NYNJ PATH
 BROOKLYN BRIDGE
 WALL STREET

NEARBY RETAIL

ZARA
 NOBU
 MERCER LABS
 BROOKS BROTHERS
 SHAKE SHACK



25 PARK ROW



At the Center of it All.

25 Park Row is located at the center of the Financial District, one of NYC's fastest growing residential areas. In addition to an influx of residents, FiDi boasts approximately 14M annual tourists, a daily influx of workers, and proximity to major transportation hubs, including Fulton Center and the World Trade Center station.

NEW RESIDENTIAL UNITS

3,200+

OFFICE-TO-RESIDENTIAL CONVERSION

8,136 UNITS

UNDER CONSTRUCTION/IN DEVELOPMENT
IN 20 RESIDENTIAL BUILDINGS

NEW RETAILERS

65

OPENED IN 2024

HOTEL ROOM OCCUPANCY

88% UP 5%

SINCE 2023

AVERAGE DAILY HOTEL RATE

XXX

HIGHEST ON RECORD

25
PARK
ROW

DIANA BOUTROSS | 212.841.5097
diana.boutross@cushwake.com

CHRISTOPHER HOURMOUZIS | 212.660.5097
christopher.hourmouzis@cushwake.com

EXCLUSIVE LEASING AGENT:

