

16-25 Bastwick Street, Clerkenwell, London, EC1V 3PS

TO LET

Leisure / Office / Showroom

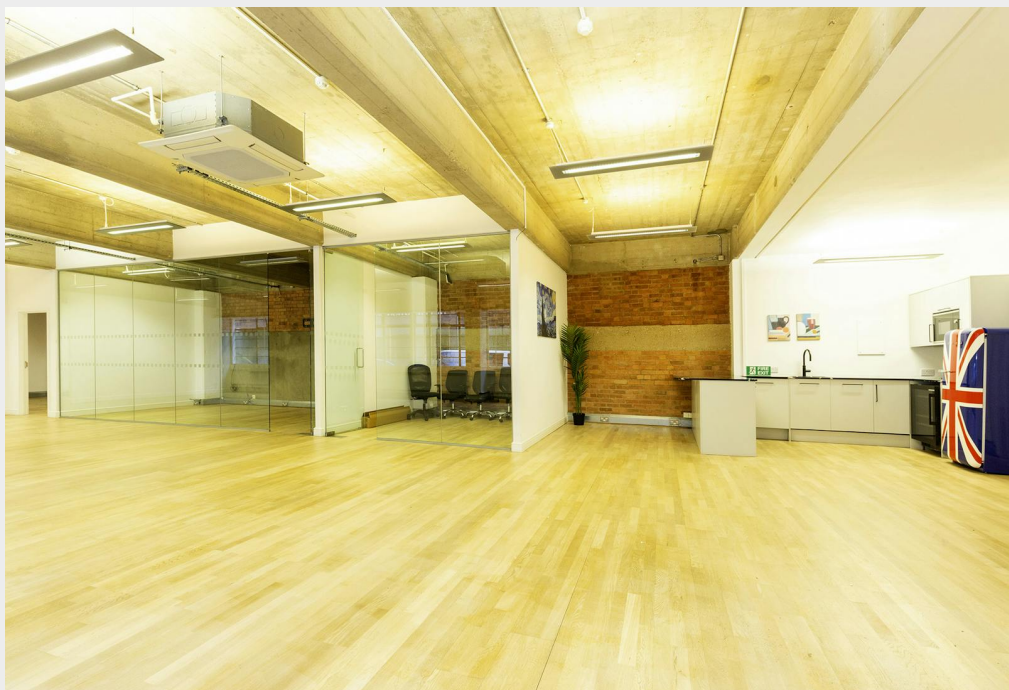
2,030 sq ft / 188.6 sq m

£35 per sq ft

Ground floor Clerkenwell commercial unit, fitted with private meeting rooms available on flexible terms



- Private ground floor office
- Central position with excellent transport links
- Good ceiling height throughout
- Air conditioning
- Fitted meeting rooms
- Fibre connectivity
- Rent inclusive of fibre and utilities
- Flexible sub-lease terms of 12 months plus



Description

A private ground floor commercial unit in Clerkenwell. The unit offers excellent ceiling heights and extensive ground floor frontage onto Bastwick Street. There is Air Conditioning throughout with 2 private glass meeting rooms and storage within the unit. The unit is available on flexible sub-lease terms with longer leases direct from the landlord available subject to terms.

Location

Located on the north side of Bastwick Street close to the intersection with Old Street and just north of Old Street (A5201). Barbican (Circle, Hammersmith & City and Metropolitan lines) station is within 6 minutes walk, while Farringdon (Circle, Hammersmith & City and Metropolitan lines, mainline services and The Elizabeth Line) and Old Street (Northern line and mainline services) stations are within 10 minutes.



Accommodation / Availability

Unit	Sq ft	Sq m	Rent (sq ft)	Rates Payable (sq ft)	Service Charge (sq ft)	Total month	Availability
Ground	2,030	188.59	£35	£17.12	£2.87	£9,302.48	Available

Tenure

New Lease

EPC

D

VAT

Applicable

Configuration

Fitted

Contacts

Tom Schwier
07583 037 559
tom.schwier@strettons.co.uk

Joel Barnes
07974 625 109
joel.barnes@strettons.co.uk



Further Information

[View on Website](#)

Strettons and their clients give notice that: 1. They are not authorised to make or give any representations or warranties in relation to the property either here or elsewhere, either on their own behalf or on behalf of their client or otherwise. They assume no responsibility for any statement that may be made in these particulars. These particulars do not form part of any offer or contract and must not be relied upon as statements or, representations of fact. 2. Any areas, measurements or distances are approximate. The text, photographs and plans are for guidance only and are not necessarily comprehensive. It should not be assumed that the property has all necessary planning, building regulation or other consents and the Agents have not tested any services, equipment or facilities. Purchasers must satisfy themselves by inspection or otherwise. Generated on 28/05/2025