

# OAKMONT ENTERPRISE PARK

8300-8400 Helgerman Ct, Gaithersburg, MD 20877

Proudly Owned & Managed By:



Leasing Information:  
301.304.8300

**Ethan Bernardi**   **Nathan Bortnick**  
301.304.8397   301.304.8392  
ebernardi@lpc.com   nbortnick@lpc.com

## Lincoln

1101 Wootton Pkwy  
Suite 410  
Rockville, MD 20854

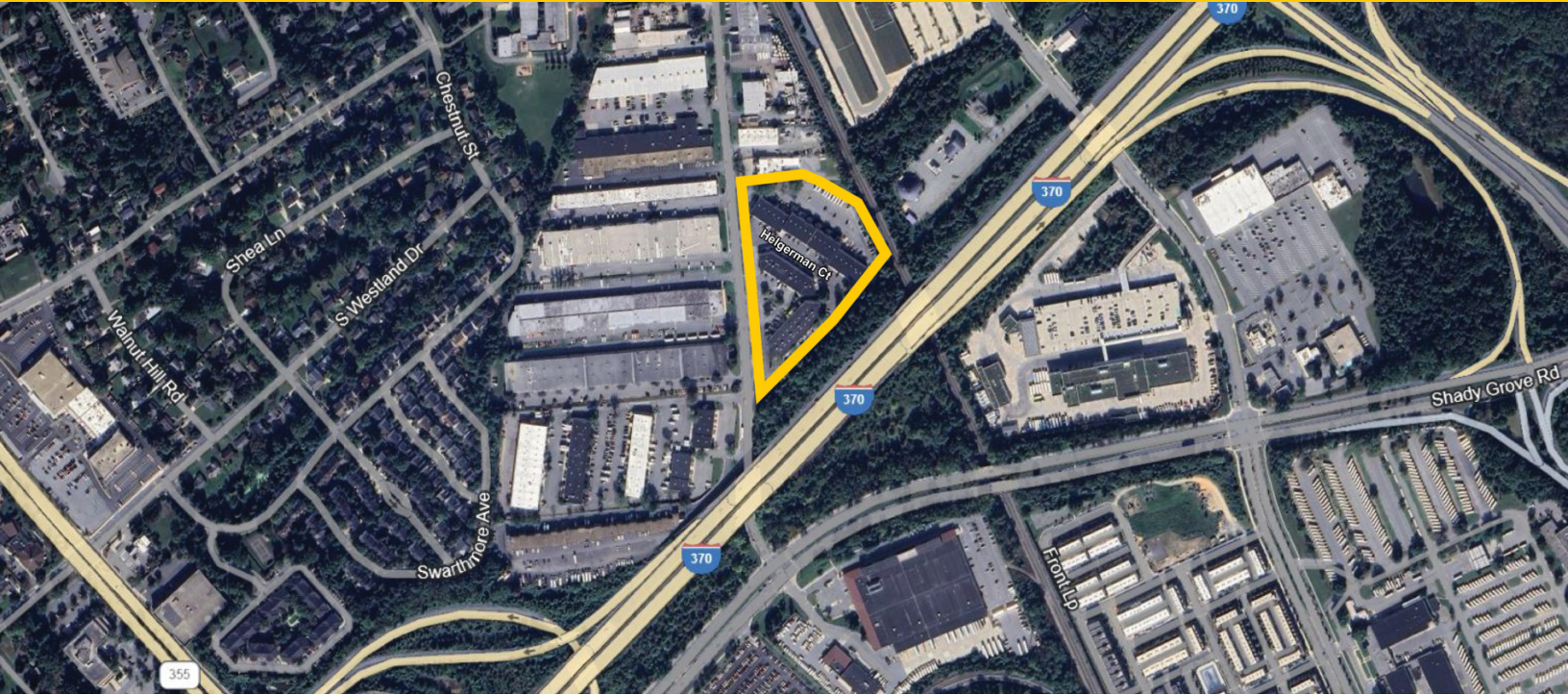
[www.lpc.com](http://www.lpc.com)

# OAKMONT ENTERPRISE PARK

Flex/Warehouse For Lease

4,500 - 19,254 SF

8300-8400 Helgerman Ct, Gaithersburg, MD 20877



## Property Highlights

- 150,000 SF, 3 building complex
- Flex/warehouse space availability
- Superior access via I270, I370 & ICC
- Dock and drive-in loading
- Locally owned and managed

## Availabilities

- 8340 Helgerman Ct (Building 3)
- 8424 Helgerman Ct (Building R)
- 8451 Helgerman Ct (Building D)

## SF

- 19,254 SF
- 7,025 SF
- 4,500 SF

Ethan Bernardi Nathan Bortnick

301.304.8397

301.304.8392

ebernardi@lpc.com

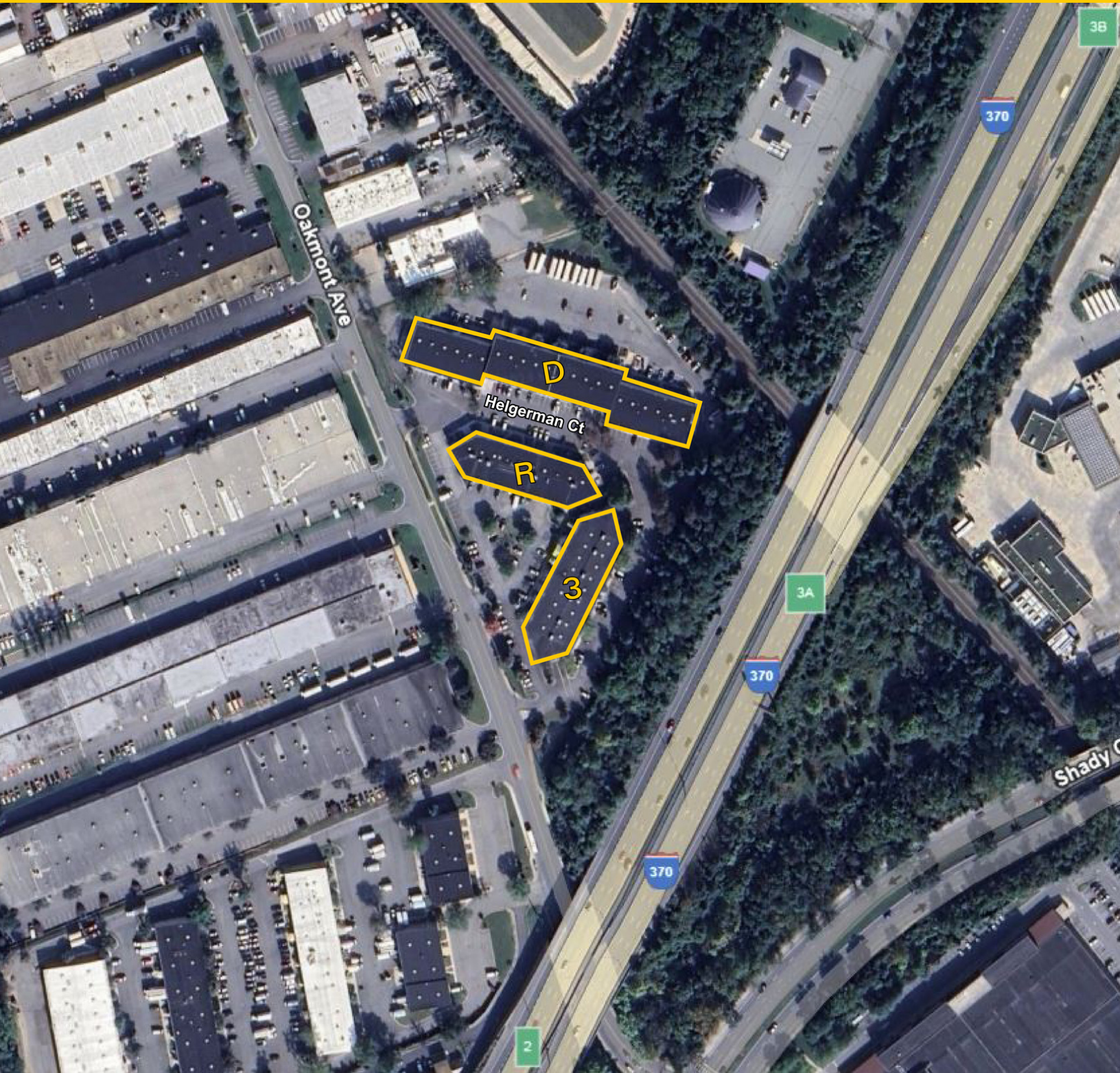
nbortnick@lpc.com

Lincoln

# OAKMONT ENTERPRISE PARK

8300-8400 Helgerman Ct, Gaithersburg, MD 20877

Availabilities



Ethan Bernardi    Nathan Bortnick

301.304.8397

301.304.8392

ebernardi@lpc.com

nbortnick@lpc.com

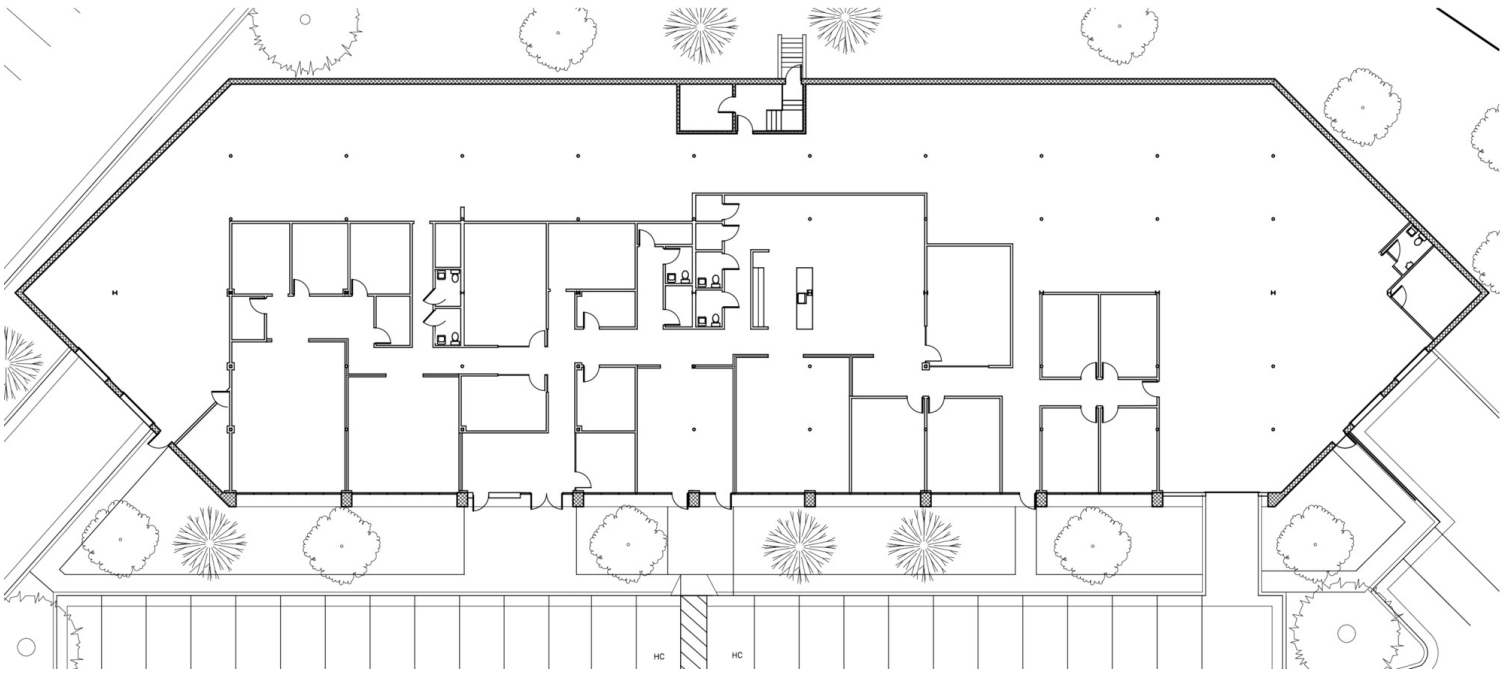
Lincoln

# OAKMONT ENTERPRISE PARK

8300-8400 Helgerman Ct, Gaithersburg, MD 20877

8340 Helgerman Ct (Building 3)

19,254 SF



| Suite                          | Size      | Description  |
|--------------------------------|-----------|--|
| 8340 Helgerman Ct (Building 3) | 19,254 SF | High-end office buildout<br>Offers both loading dock and drive-in access |

**Ethan Bernardi**   **Nathan Bortnick**

301.304.8397

301.304.8392

ebernardi@lpc.com

nbortnick@lpc.com

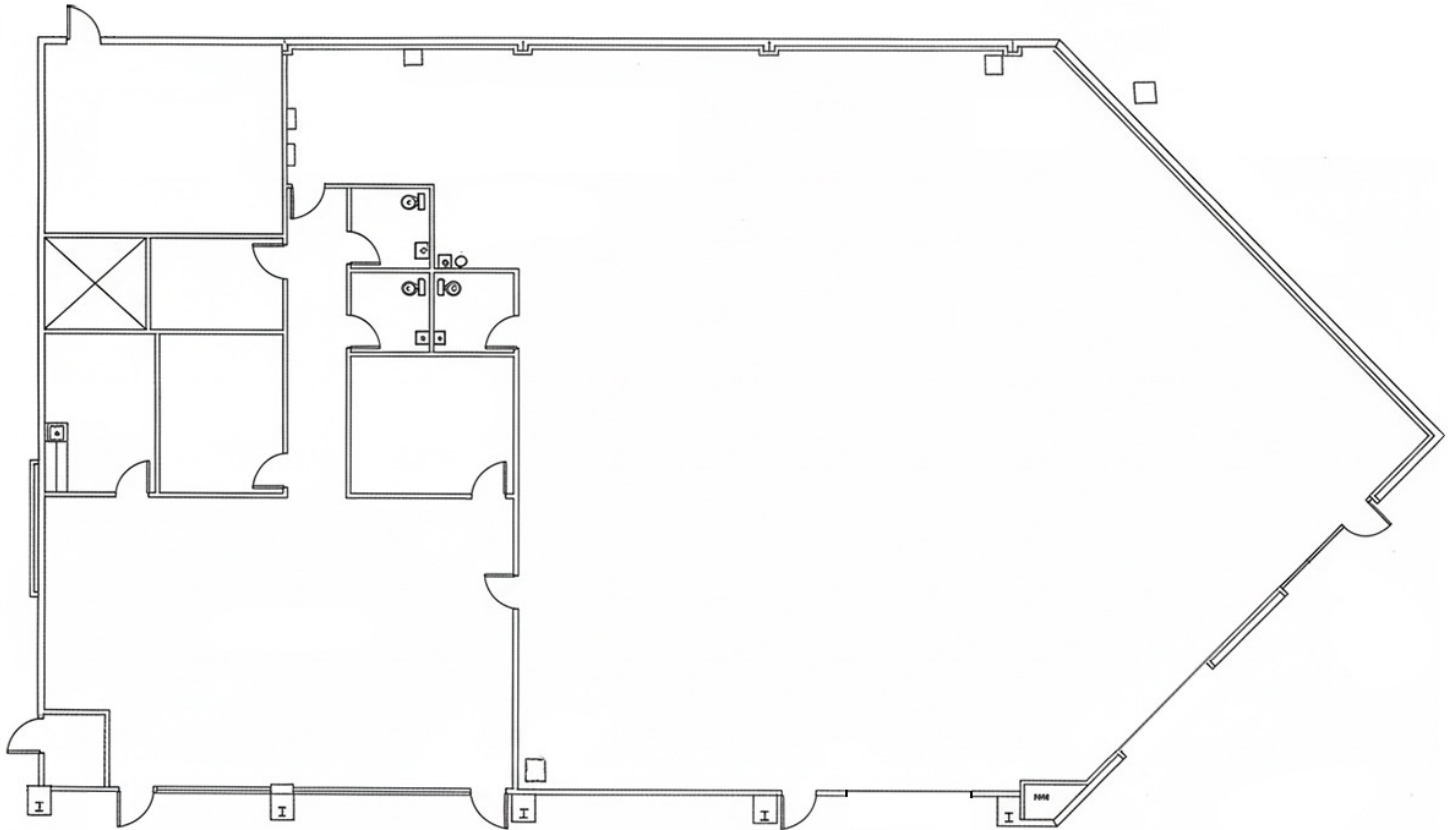
**Lincoln**

# OAKMONT ENTERPRISE PARK

8300-8400 Helgerman Ct, Gaithersburg, MD 20877

8424 Helgerman Ct (Building R)

7,025 SF



| Suite                          | Size     | Description  |
|--------------------------------|----------|--|
| 8424 Helgerman Ct (Building R) | 7,025 SF | Combination office & warehouse<br>Two (2) drive-in access points |

Ethan Bernardi Nathan Bortnick

301.304.8397

301.304.8392

ebernardi@lpc.com

nbortnick@lpc.com

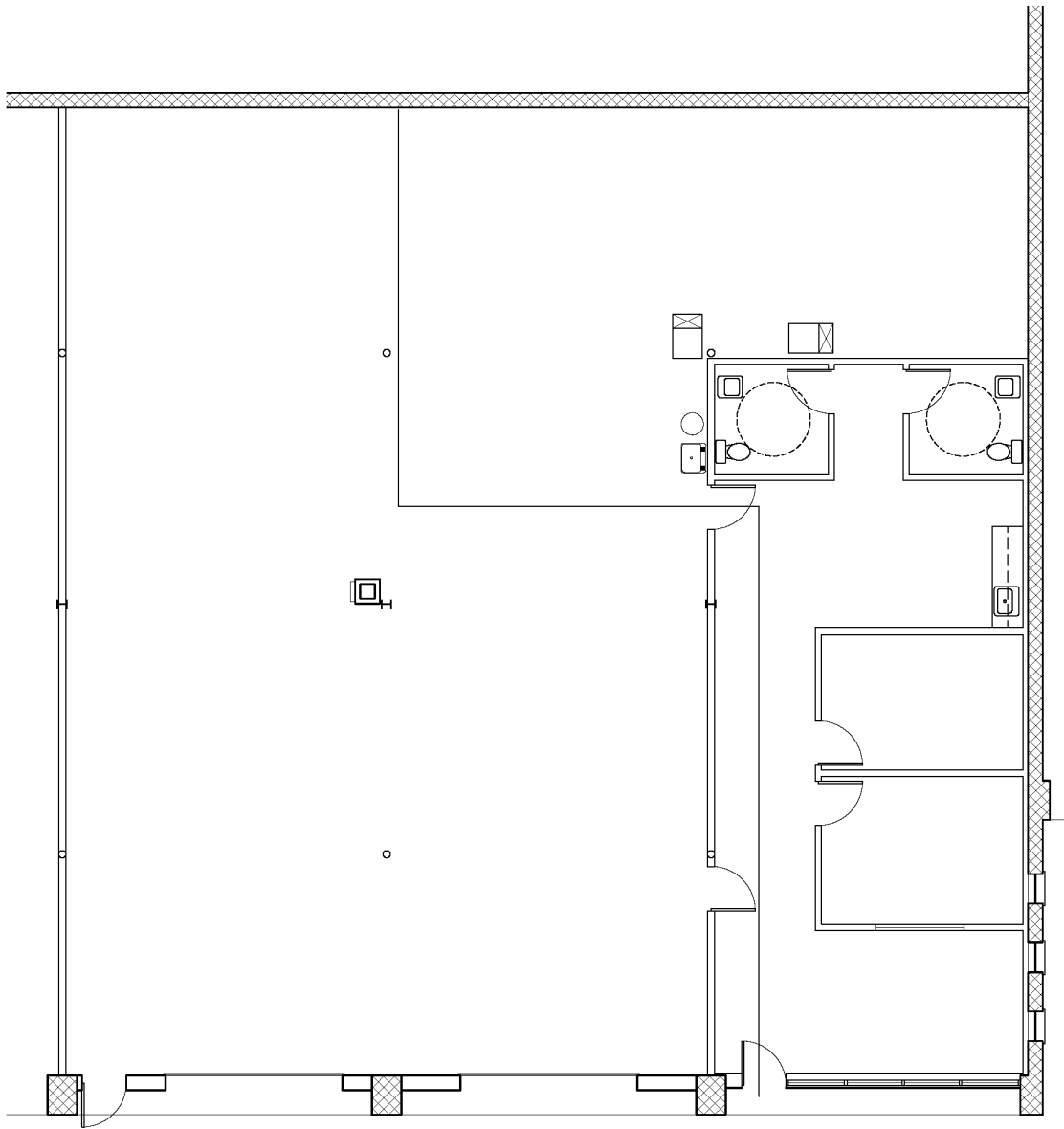
Lincoln

# OAKMONT ENTERPRISE PARK

8300-8400 Helgerman Ct, Gaithersburg, MD 20877

8451 Helgerman Ct (Building D)

4,500 SF



| Suite                          | Size     | Description  |
|--------------------------------|----------|--|
| 8451 Helgerman Ct (Building D) | 4,500 SF | Newly built out, move-in ready<br>Combination office & warehouse<br>Two (2) drive-in access points |

**Ethan Bernardi**   **Nathan Bortnick**

301.304.8397

301.304.8392

ebernardi@lpc.com

nbortnick@lpc.com

**Lincoln**



# OAKMONT ENTERPRISE PARK

8300-8400 Helgerman Ct  
Gaithersburg, MD 20877

Leasing Information:  
301.304.8300

**Ethan Bernardi**  
301.304.8397  
ebernardi@lpc.com

**Nathan Bortnick**  
301.304.8392  
nbortnick@lpc.com

## Lincoln

1101 Wootton Pkwy  
Suite 410  
Rockville, MD 20854

[www.lpc.com](http://www.lpc.com)