



724
102

FOR SUBLEASE

Prime Downtown Streetfront Retail Space

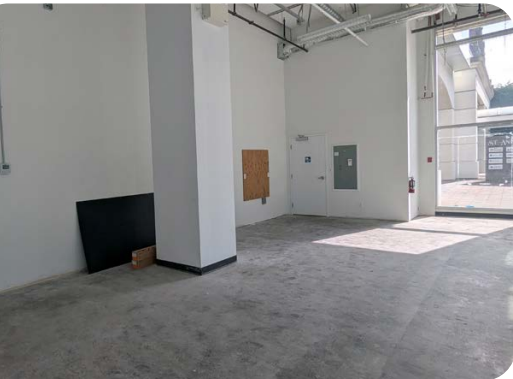
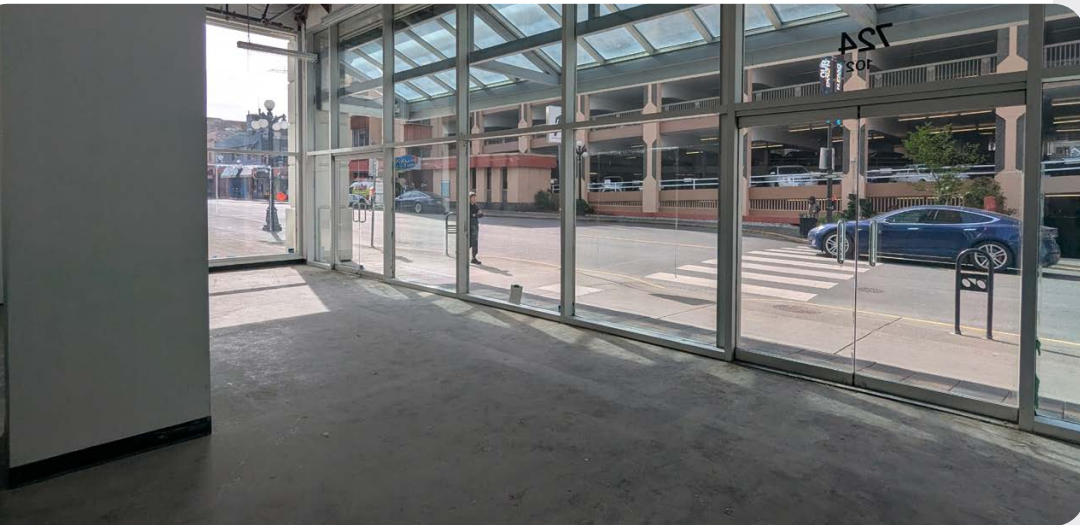
724 View Street | Victoria, BC

Anna Wray
Personal Real Estate Corporation
Vice President
+1 250 414 8444
anna.wray@colliers.com



The Location

The subject property is ideally located on View Street, just steps from both Blanshard and Douglas Street in the heart of downtown Victoria. The property has excellent visibility and an abundance of natural light.



This document has been prepared by Colliers for advertising and general information only. Colliers makes no guarantees, representations or warranties of any kind, expressed or implied, regarding the information including, but not limited to, warranties of content, accuracy and reliability. Any interested party should undertake their own inquiries as to the accuracy of the information. Colliers excludes unequivocally all inferred or implied terms, conditions and warranties arising out of this document and excludes all liability for loss and damages arising there from. This publication is the copyrighted property of Colliers and/or its licensor(s). Copyright © 2025. All rights reserved. This communication is not intended to cause or induce breach of an existing listing agreement. Colliers Macaulay Nicolls Inc., Brokerage

PROPERTY OVERVIEW

SALIENT FACTS

Size 676 SF

Basic Rent \$27.00 PSF

Additional Rent \$24.19 PSF (2025)

Availability Immediately

Electrical 150 amp power

Ceiling Height ±16.5 Ft

Lease Terms Sublease until December 30, 2027

Zoning CBD-2 - Permitted uses include (but are not limited to); brew pub, civic facility, drinking establishment, financial service, food & beverage service, office, retail liquor sale, studio, & utility

FEATURES



Fully serviced and ready to be transformed by a new occupant. Provided in shell condition with a finished 2-piece washroom.



Fantastic visibility & natural light