

WILDWOOD, FL RETAIL

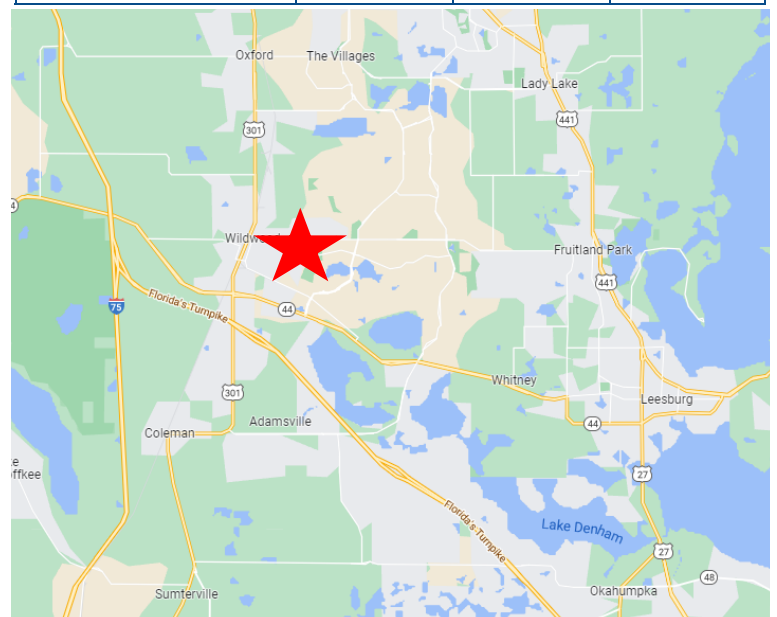
1308 Cleveland Ave
Wildwood, FL 34785



PROPERTY HIGHLIGHTS

- Up to 11,160 SF of retail available
- Drive-Thru Endcap Available
- Traffic: Cleveland Ave: 19,100 VPD
- Perfect for Retail & Medical
- The fastest-growing U.S. Metro Area between the 2010 Census and 2020 Census was "The Villages, FL which grew 39% from about 93,000 people to about 130,000 people."

Demographics	1-Mile	3-Mile	5-Mile
Population	4,874	45,071	98,944
Average HH Income	\$96,157	\$88,424	\$87,114



Drew Shofner

321-295-3998

Drew@blurockcommercial.com

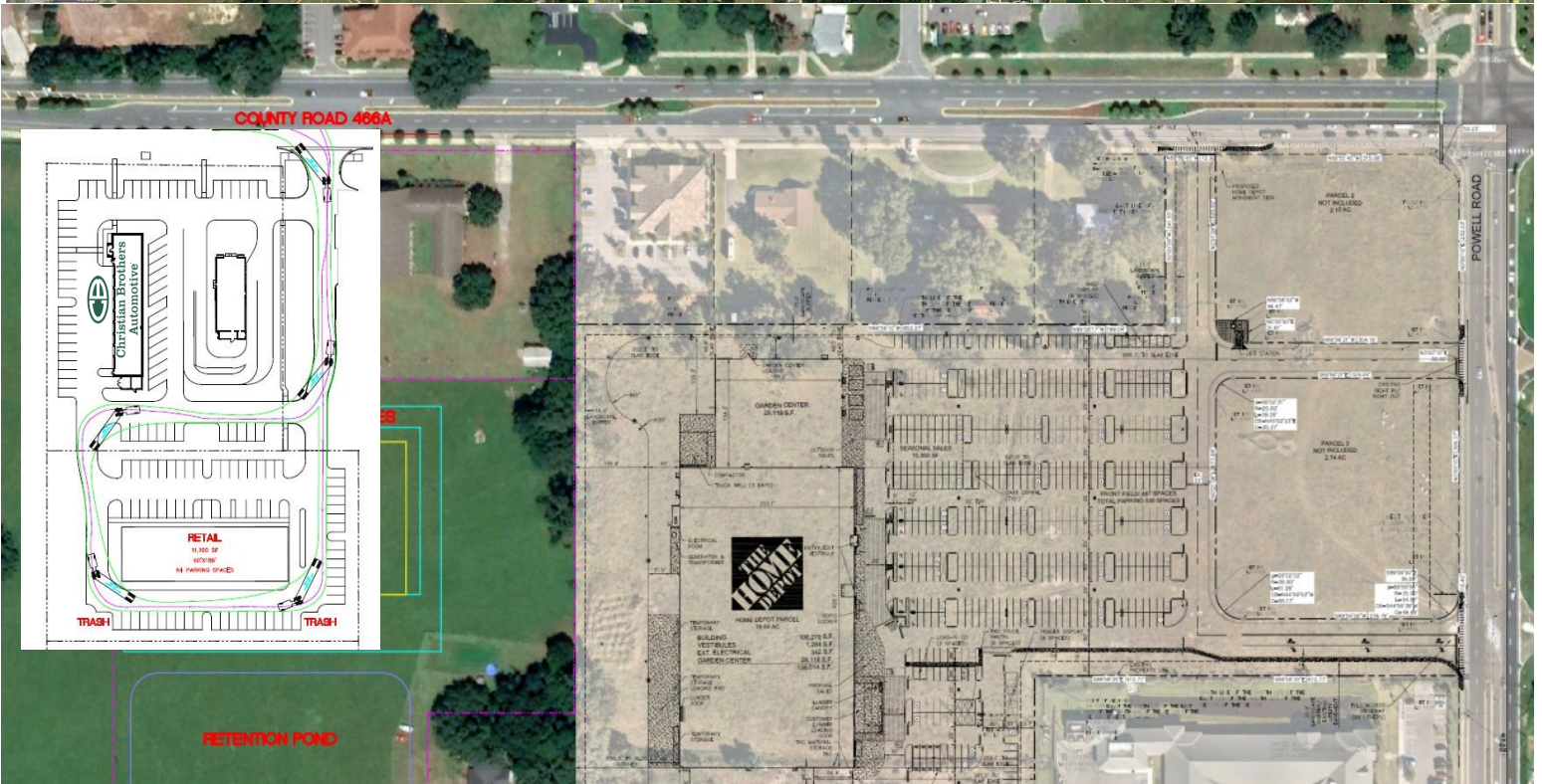
3408 S. Orange Ave.
Suite B

Orlando, FL 32806

www.blurockcommercial.com

WILDWOOD, FL RETAIL

1308 Cleveland Ave
Wildwood, FL 34785



Drew Shofner

321-295-3998

Drew@blurockcommercial.com

3408 S. Orange Ave.

Suite B

Orlando, FL 32806

www.blurockcommercial.com

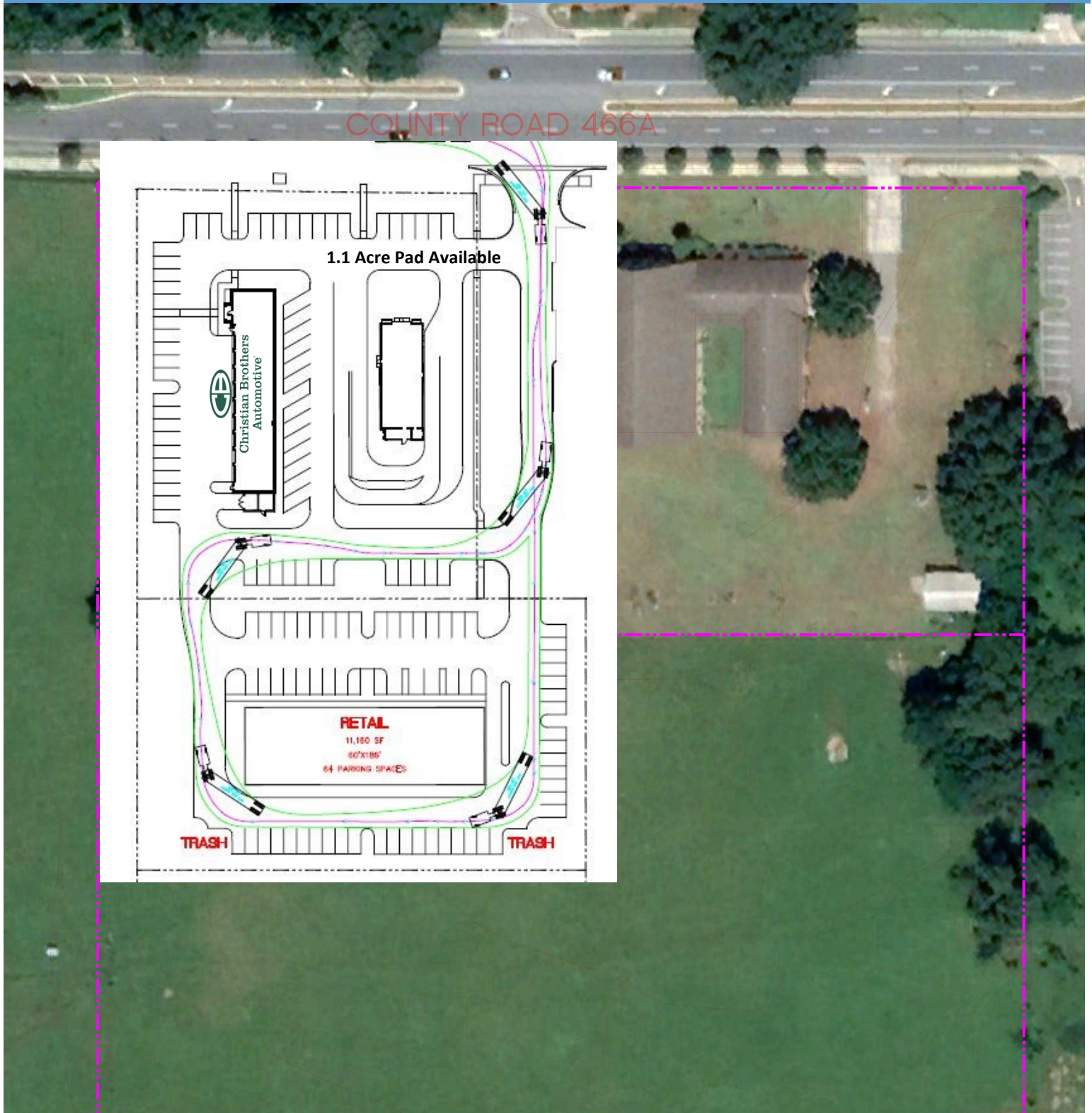


WILDWOOD, FL RETAIL

1308 Cleveland Ave
Wildwood, FL 34785



* Proposed Site Plan– We can modify based on tenant needs



COUNTY ROAD 466A

1.1 Acre Pad Available

Christian Brothers
Automotive

RETAIL
11,180 SF
60'x185'
64 PARKING SPACES

TRASH

TRASH



Drew Shofner

321-295-3998

Drew@blurockcommercial.com

3408 S. Orange Ave.
Suite B

Orlando, FL 32806

www.blurockcommercial.com