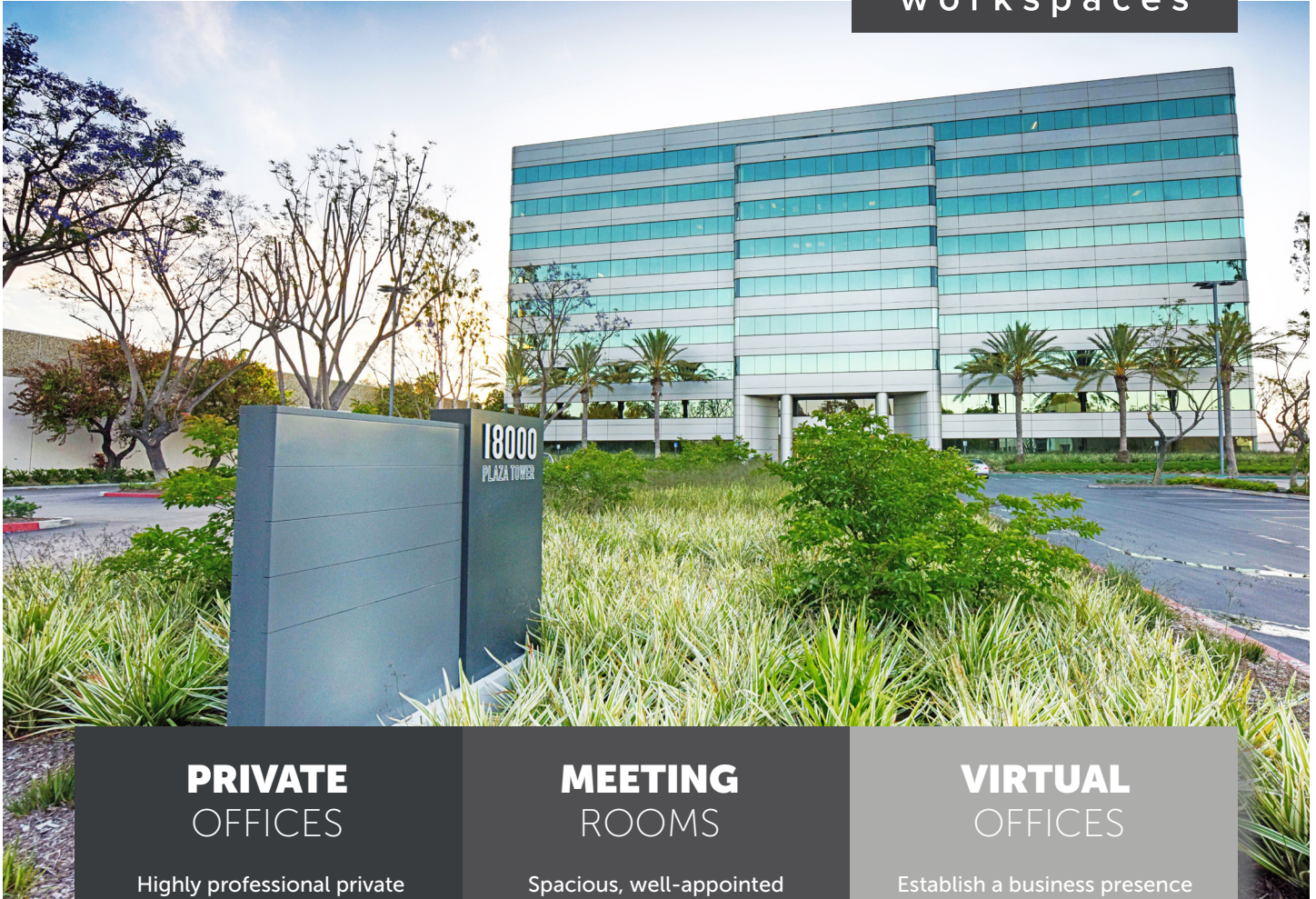


Plaza Tower

18000 Studebaker Road, Suite 700, Cerritos, CA 90703



PRIVATE OFFICES

Highly professional private offices for individuals and teams that are flexible and scaled for growth.

MEETING ROOMS

Spacious, well-appointed meeting rooms with on-site administrative support. Available for an hour, day or longer.

VIRTUAL OFFICES

Establish a business presence with mail handling, phone answering or meeting room time.

ABOUT THIS LOCATION

Plaza Tower is centrally located between Los Angeles and Orange County making it a desirable destination for businesses seeking private offices, meeting rooms or virtual offices within South Los Angeles County. Near the intersection of the 605 and 91 Freeways, it's a commuter's dream. It also features beautifully landscaped common areas.

CONTACT US

Let's touch base! Contact the on-site General Manager at 562-467-6900 or CERmanager@premierworkspaces.com to schedule a tour.



Plaza Tower

18000 Studebaker Road, Suite 700, Cerritos, CA 90703



PREMIER AMENITIES

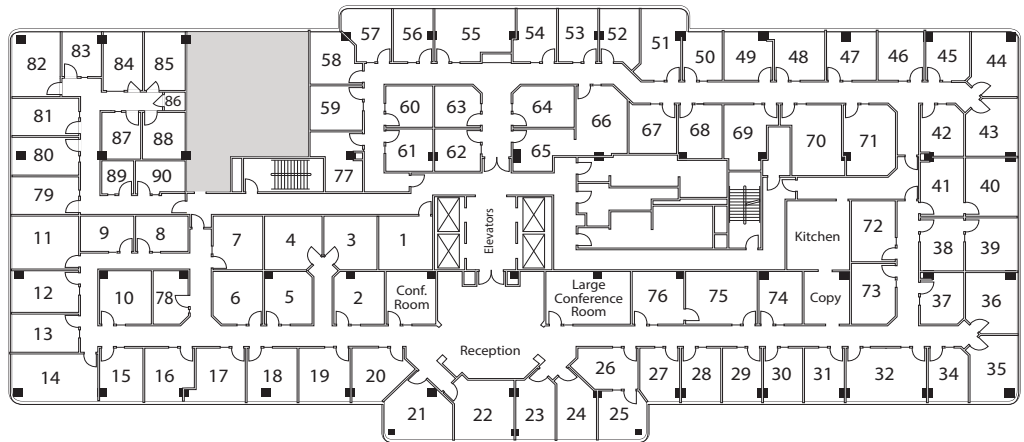
Our private suites can be easily customized to fit your desired aesthetic and brand.

- Private Offices
- Team Rooms
- High Speed Internet
- Telephone Answering
- Mail Collection
- Equipped Kitchen
- Day Offices
- Meeting Rooms
- Daily Janitorial
- Furnished or Unfurnished

PREMIER DIFFERENCE

We've been perfecting the professional workspace for over 20 years.

- Highly-Professional Atmosphere
- On-Site Manager & Support Staff
- Scalable Solutions for Individuals and Teams
- On-Site Billing
- 90+ Locations Nationwide



NEARBY AMENITIES

Cerritos is centrally located between Los Angeles and Orange County metro markets, making it a popular destination for growing businesses and commuters alike.

Nearby Amenities:

- 24 Hour Fitness
- Cerritos Auto Square
- Cerritos Center for the Performing Arts
- Cerritos College
- Cerritos Public Library
- Cerritos Shopping Center
- Fremont College
- Plaza 183

Nearby Transit:

- Freeways – 605 & 91 Freeways
- Bus – LA Metro

CONTACT US

Let's touch base! Contact the on-site General Manager at 562-467-6900 or CERmanager@premierworkspaces.com to schedule a tour.