

FOR LEASE

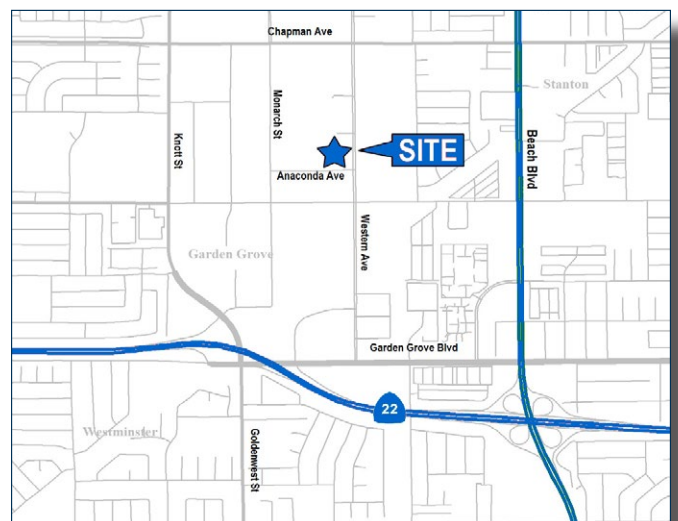
±6,000 SF INDUSTRIAL UNIT
Part of a Multi-Tenant Business Park

7485 ANACONDA AVE | GARDEN GROVE | CA



PROPERTY FEATURES

- ±685 Sf Office Area (Possible to Expand)
- 1 Extra Large Ground Level Loading Door (14'x14')
- ±18' Warehouse Clearance
- Fire Sprinklers
- 200 Amps of Power (verify)
- Easy Access to 22, 405, 605 and 91 Freeways
- Excellent Truck Access/Drive Around Building
- \$1.53/SF NNN + \$0.13/SF in additional nets.



PAUL CAPUTO, MBA

Senior Vice President | Partner
License #01196935
(714) 935-2332
pcaputo@voitco.com

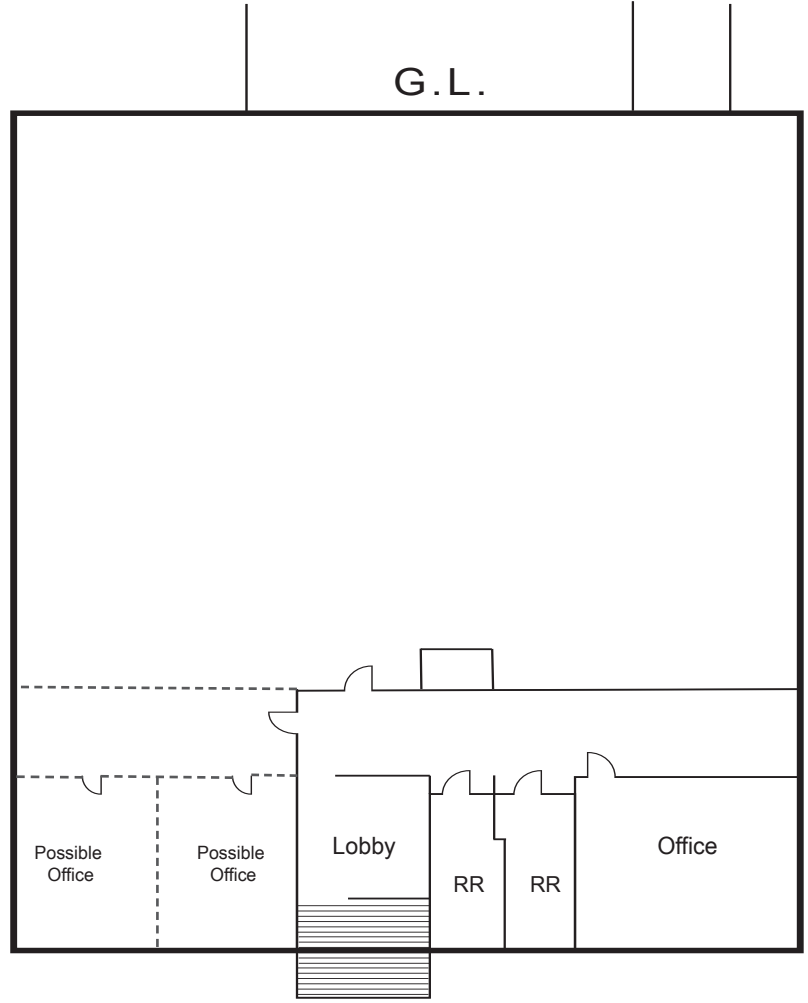
Voit
REAL ESTATE SERVICES

BC
BOUMA CAPUTO



Current Listings

FLOOR PLAN



EXCLUSIVELY OFFERED BY:



REAL ESTATE SERVICES



PAUL CAPUTO, MBA

Senior Vice President | Partner

License #01196935

(714) 935-2332

pcaputo@voitco.com



Current Listings