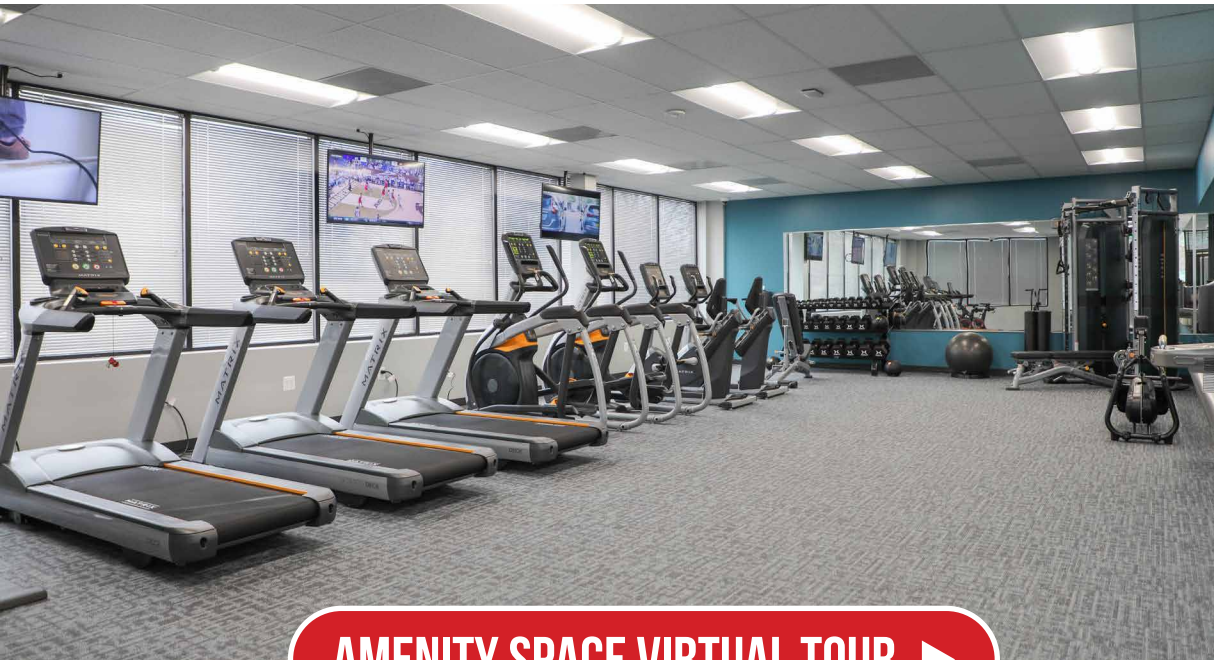


FOR LEASE

BALTIMORE COUNTY, MD

3108 LORD BALTIMORE DR

EXECUTIVE PARK WEST | 3100-3300 LORD BALTIMORE DRIVE | WINDSOR MILL, MD 21244



AMENITY SPACE VIRTUAL TOUR ▶



PROPERTY HIGHLIGHTS:

- ▶ RECENTLY ADDED! FITNESS CENTER AND CONFERENCE ROOM
- ▶ TOTAL OF 450,000 SQUARE FEET IN TWELVE BUILDINGS IN THIS 30-ACRE BUSINESS PARK
- ▶ WITHIN 3 MILES OF SOCIAL SECURITY ADMINISTRATION HEADQUARTERS AND CENTER FOR MEDICARE AND MEDICAID SERVICES
- ▶ WITHIN TWO (2) MILES OF BELTWAY EXIT 17 AT SECURITY BOULEVARD

DAVID S. BROWN
ENTERPRISES, L.T.D.

KEVIN KEANE | SVP, OFFICE LEASING
410.581.2519 | KEVIN@DAVIDSBROWN.COM

BRENT MANGUM | VP, OFFICE LEASING
410.581.2518 | BRENT@DAVIDSBROWN.COM

NOAH ADLER | LEASING ASSOCIATE
410.581.2510 | NADLER@DAVIDSBROWN.COM

FOR LEASE

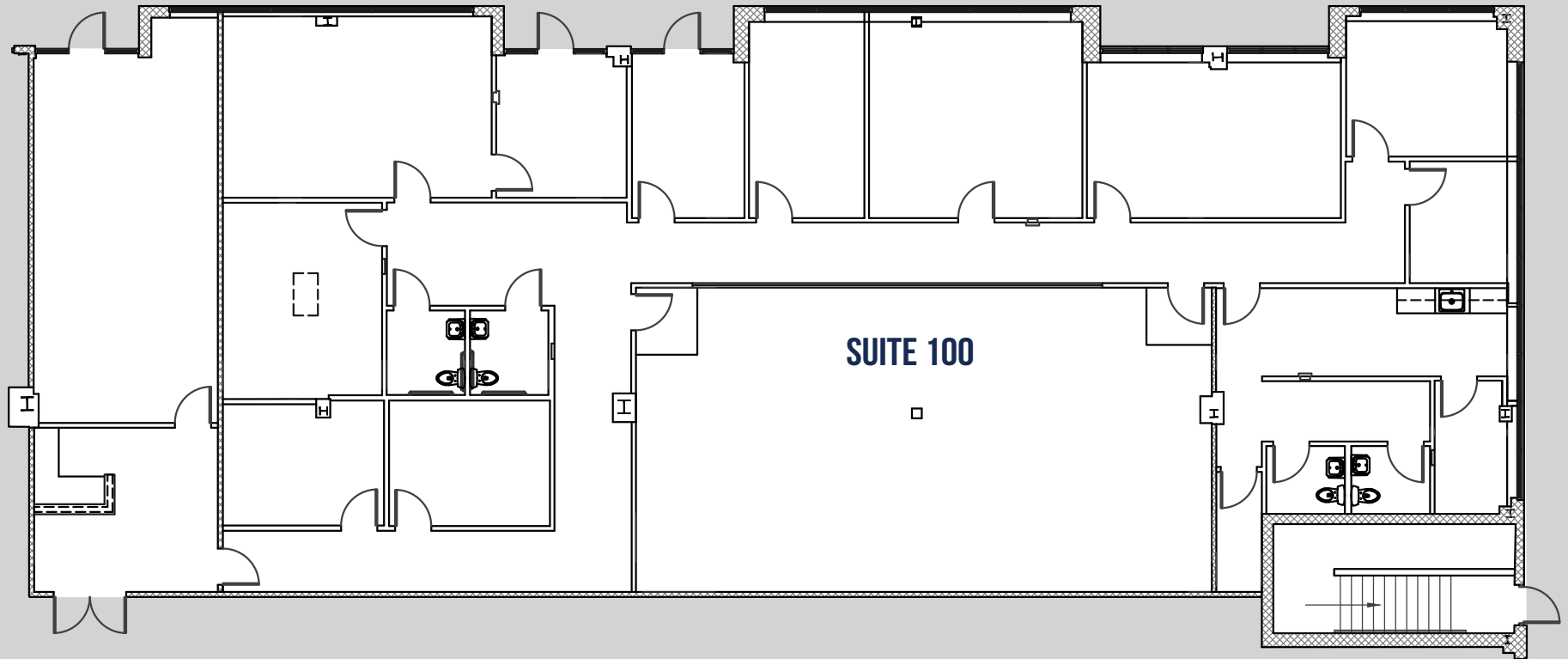
BALTIMORE COUNTY, MD

3108 LORD BALTIMORE DR

EXECUTIVE PARK WEST | 3100-3300 LORD BALTIMORE DRIVE | WINDSOR MILL, MD 21244

AVAILABLE

▶ SUITE 100 - 5,779 SF



DAVID S. BROWN
ENTERPRISES, LTD.

KEVIN KEANE | SVP, OFFICE LEASING

410.581.2519 | KEVIN@DAVIDSBROWN.COM

BRENT MANGUM | VP, OFFICE LEASING

410.581.2518 | BRENT@DAVIDSBROWN.COM

NOAH ADLER | LEASING ASSOCIATE

410.581.2510 | NADLER@DAVIDSBROWN.COM

FOR LEASE

BALTIMORE COUNTY, MD

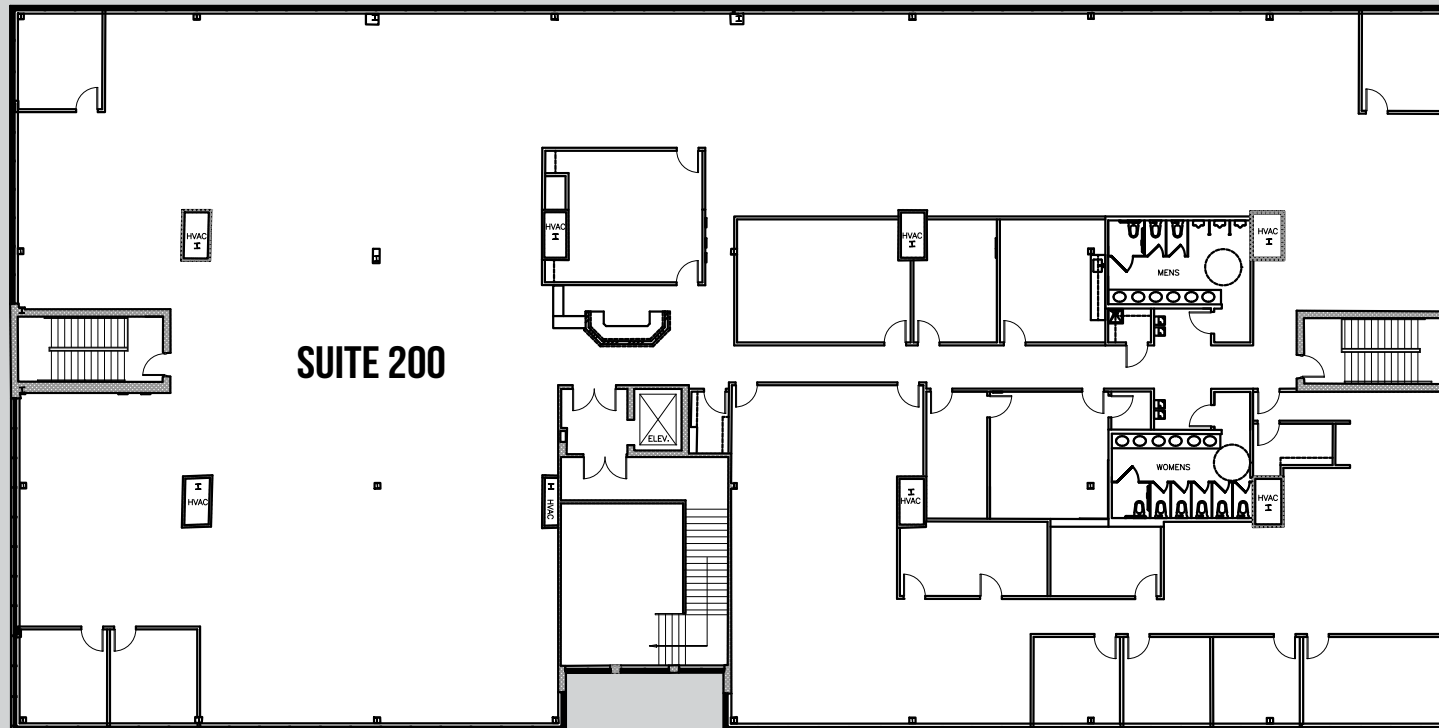
3108 LORD BALTIMORE DR

EXECUTIVE PARK WEST | 3100-3300 LORD BALTIMORE DRIVE | WINDSOR MILL, MD 21244

AVAILABLE

► SUITE 200 - 18,642 SF

SUITE 200 VIRTUAL TOUR ►



DAVID S. BROWN
ENTERPRISES, L.T.D.

KEVIN KEANE | SVP, OFFICE LEASING
410.581.2519 | KEVIN@DAVIDSBROWN.COM

BRENT MANGUM | VP, OFFICE LEASING
410.581.2518 | BRENT@DAVIDSBROWN.COM

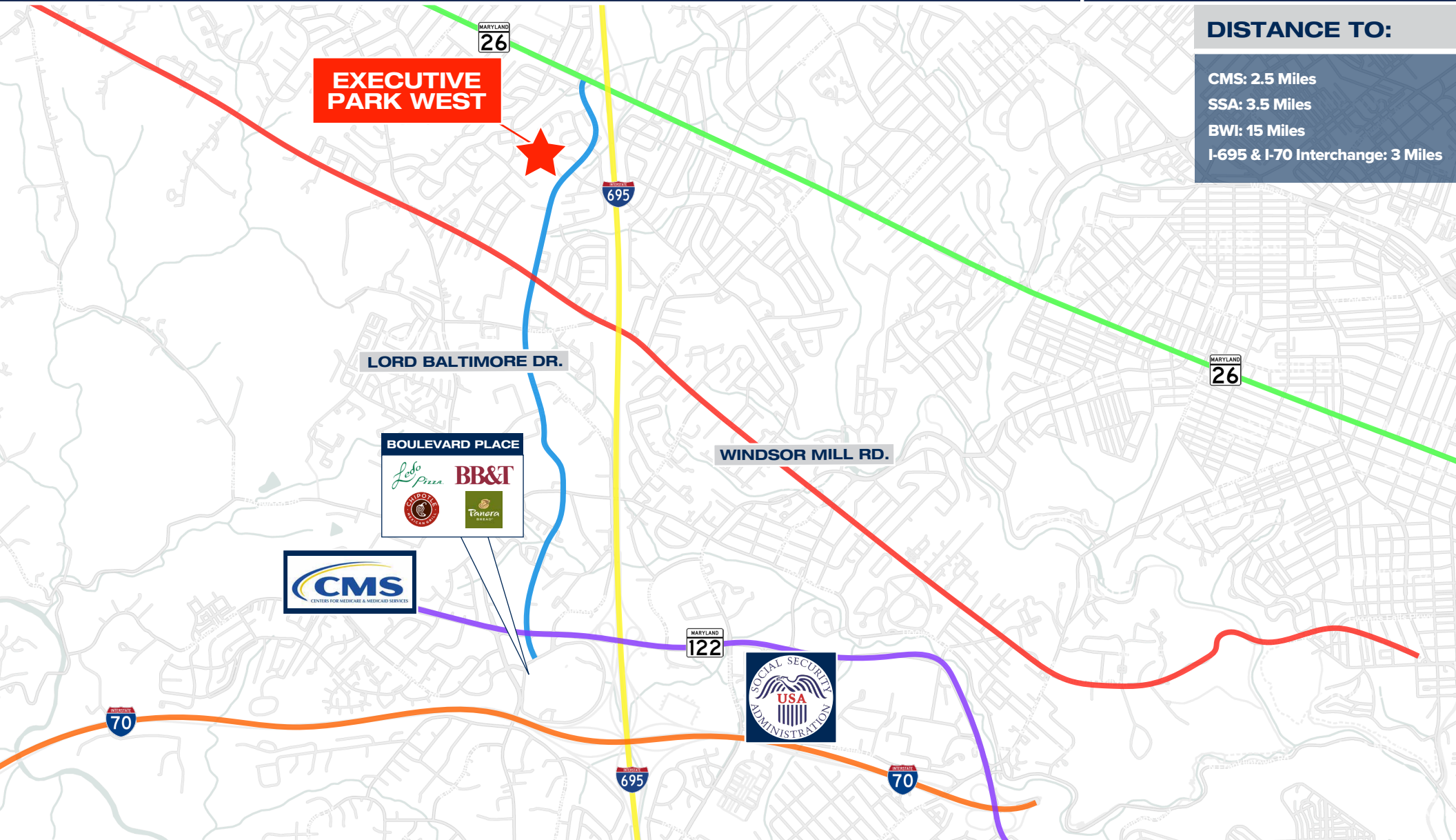
NOAH ADLER | LEASING ASSOCIATE
410.581.2510 | NADLER@DAVIDSBROWN.COM

DAVID S. BROWN ENTERPRISES | 100 PAINTERS MILL ROAD, OWINGS MILLS, MD 21117 | 410.581.2520 | WWW.DAVIDSBROWN.COM |

3108 LORD BALTIMORE DR

EXECUTIVE PARK WEST | 3100-3300 LORD BALTIMORE DRIVE | WINDSOR MILL, MD 21244

MAP



DISTANCE TO:

- CMS: 2.5 Miles
- SSA: 3.5 Miles
- BWI: 15 Miles
- I-695 & I-70 Interchange: 3 Miles