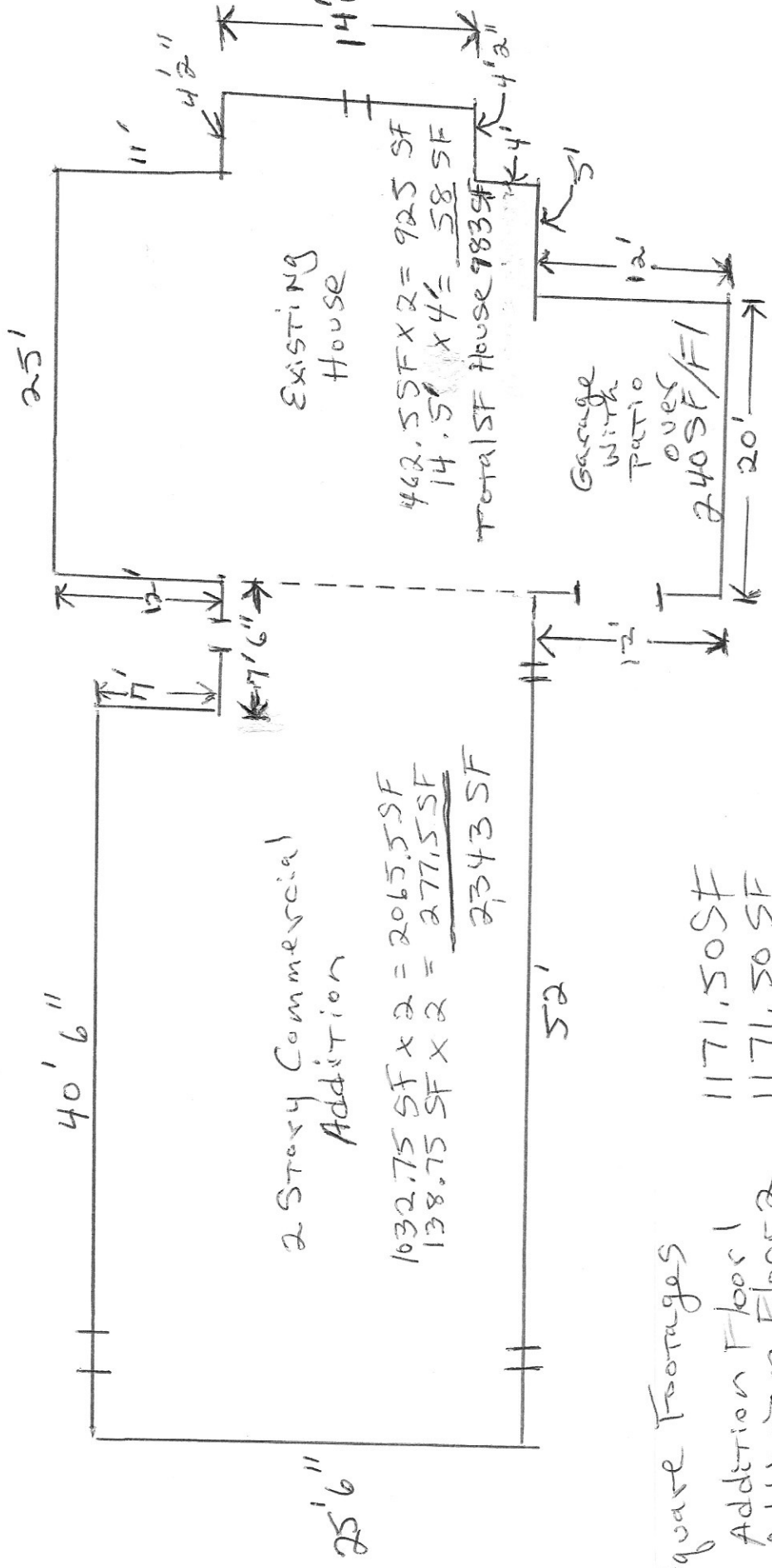


Route 10 Perry Highway



Existing House

442.5 SF x 2 = 925 SF  
 14.5' x 4' = 58 SF  
 Total SF House 983 SF

Garage with patio  
 240 SF/F1

2 Story Commercial Addition

1632.75 SF x 2 = 2065.5 SF  
 138.75 SF x 2 = 277.5 SF  
 2343 SF

Square Footages	1171.50 SF			
Addition Floor 1	1171.50 SF			
Addition Floor 2	983 SF			
House Total		240 SF		
Garage		240 SF		
Patio		<u>3806 SF</u>		
Total Sq Ftage			491 SF	
+ House Basement			<u>4297 SF</u>	

Guenevere Street