

 **CITIGROUP  
CENTER**  
201 S BISCAYNE



DELIVERED 2024

# STATE-OF-THE-ART SUITE 2620: 4,554 RSF

[CITIGROUPCENTER.COM](http://CITIGROUPCENTER.COM)



26TH FLOOR

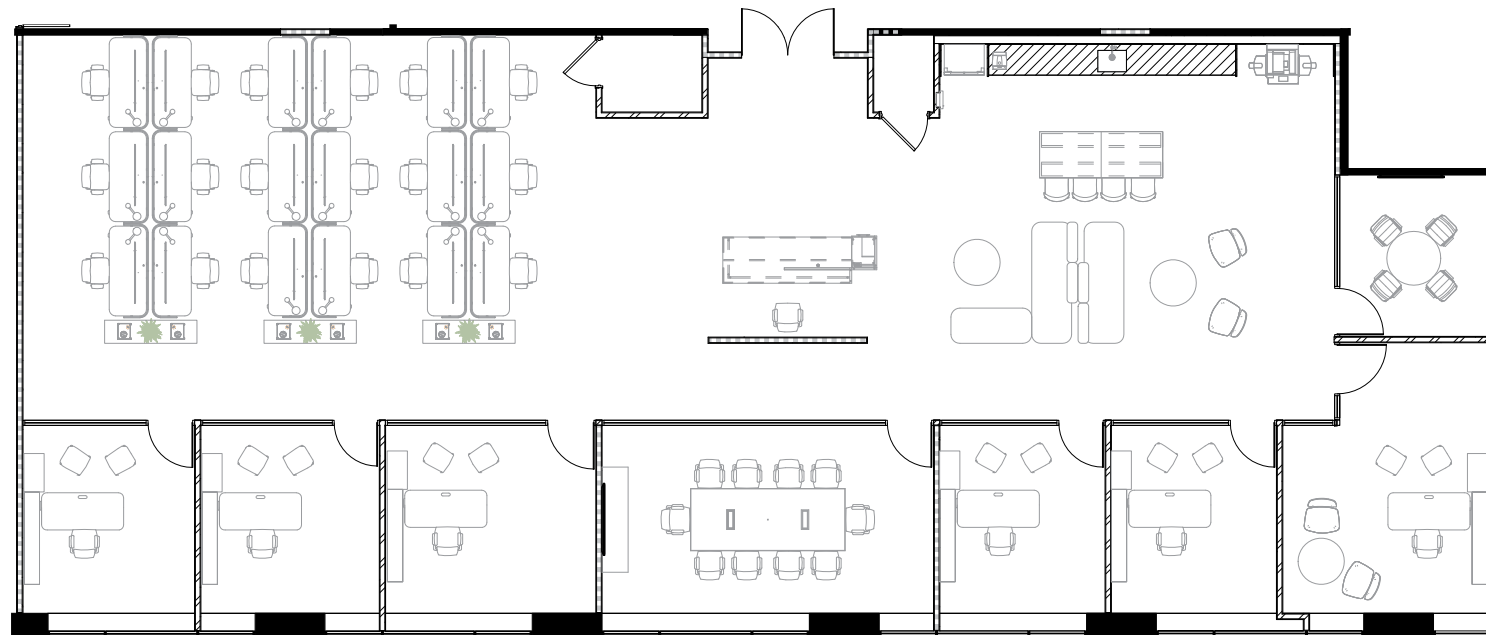
**SUITE 2620**  
**4,554 RSF**

VIEW THE SPACE

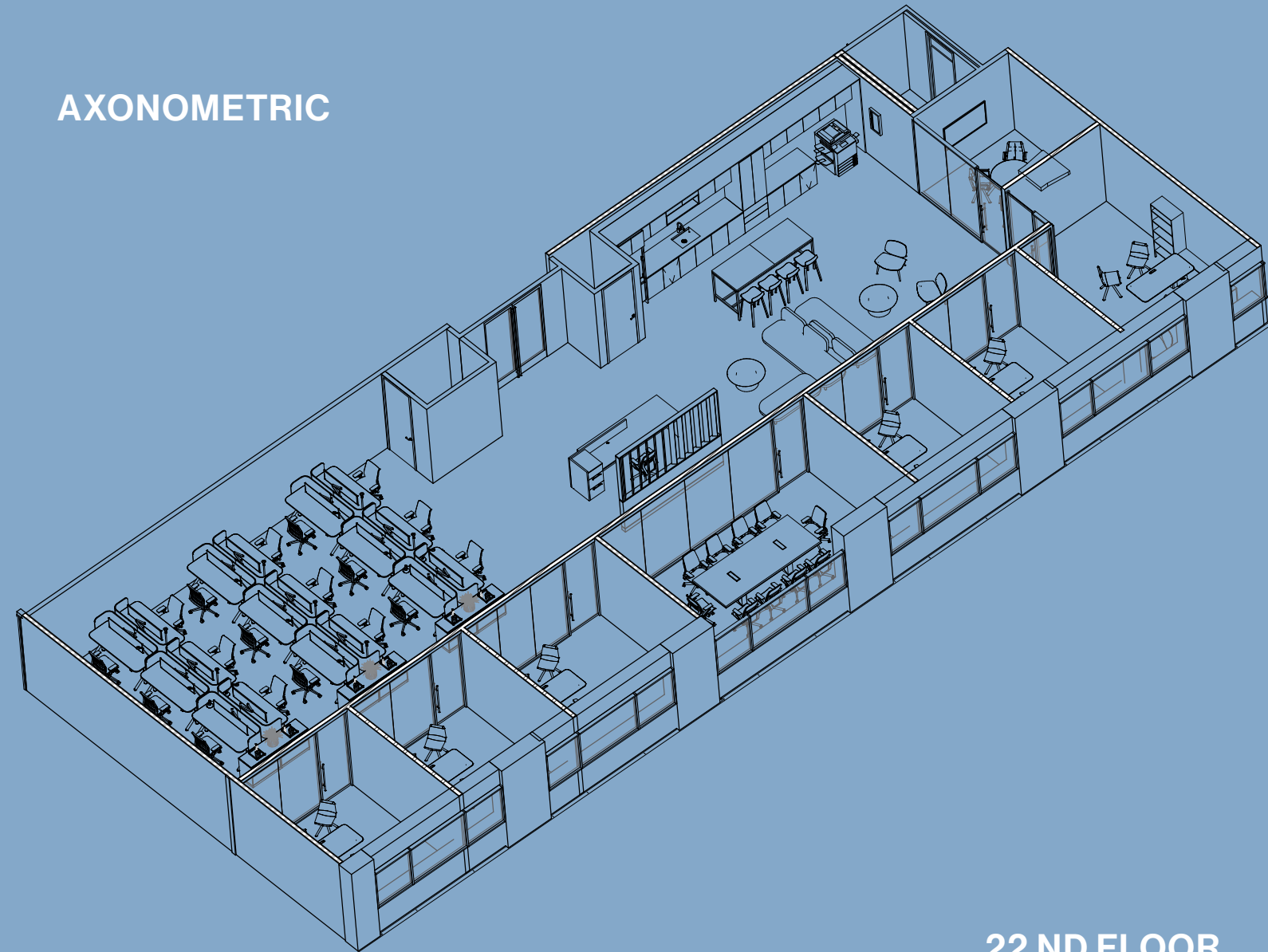


VIRTUAL TOUR

FLOOR PLAN



AXONOMETRIC



22 ND FLOOR





FINISHES

# MATERIAL PALETTE



**Acoustic Wallcovering**  
Natural



**Carpet**  
Travertine



**Porcelain Tile Flooring**  
Rebore White Matte



**Stone Counter & Backsplash**  
Eternal Staturaio



**Millwork**  
Neutral Oak



**Millwork**  
Opak Forest



Neutral tones with  
white oak accents

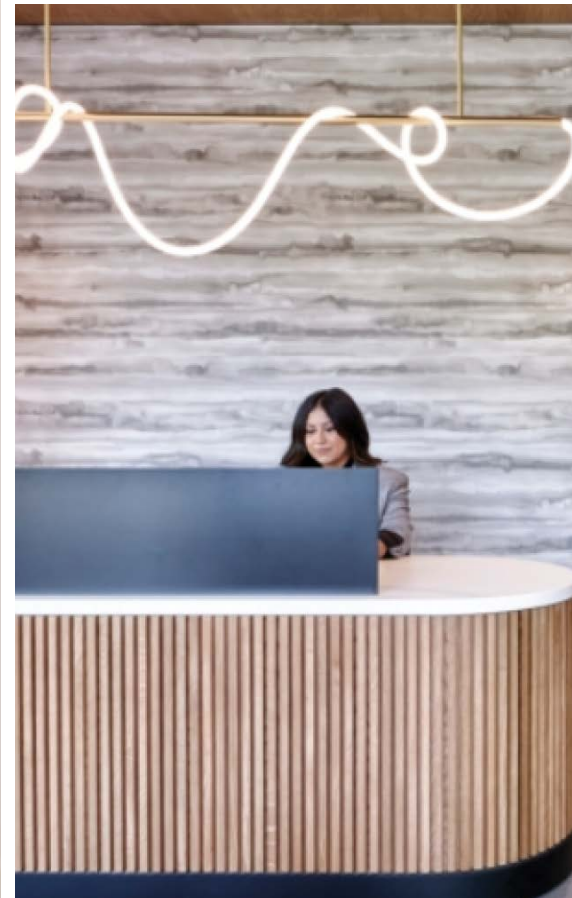


## INSPIRATION

*Drop ceiling in the open area, wood paneling wall & features, carpet & porcelain tile flooring, accent lighting, light tones*



Inspirational Images Only





**CITIGROUP  
CENTER**  
201 S BISCAYNE

# FOR LEASING INQUIRIES, PLEASE CONTACT

**STEVEN HURWITZ**

305.960.8441

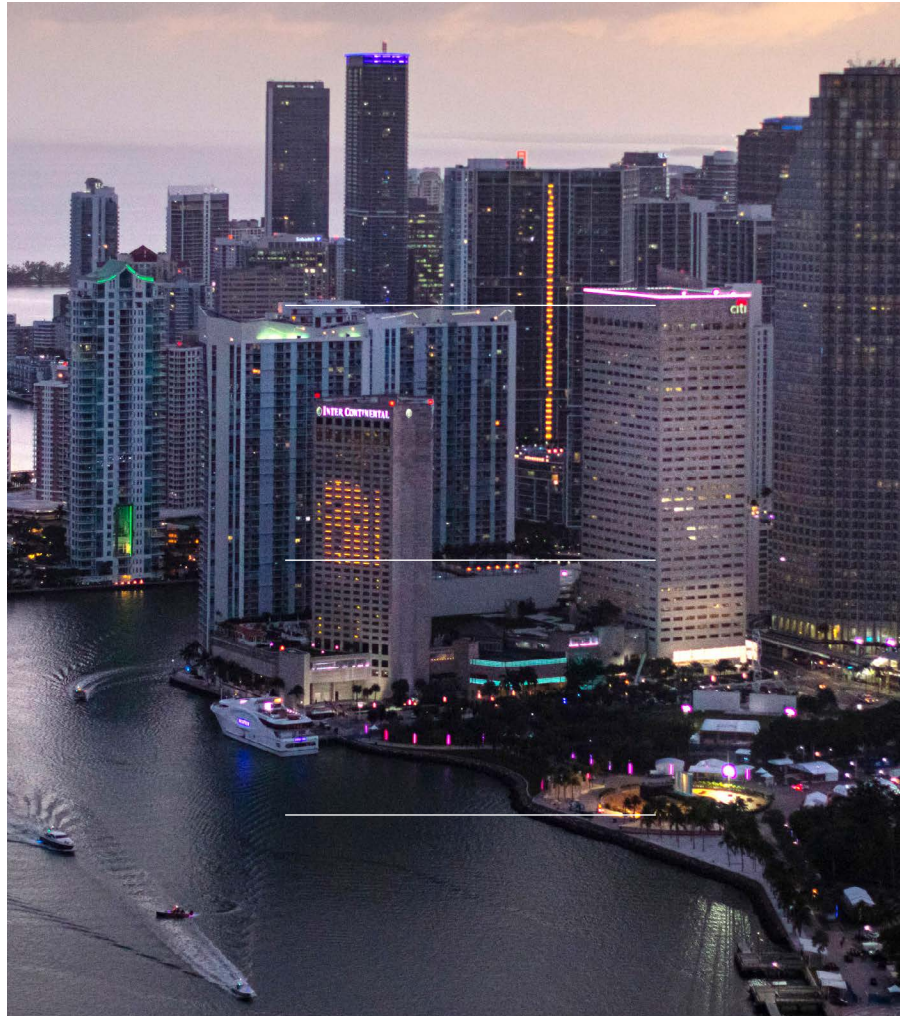
[steven.hurwitz@jll.com](mailto:steven.hurwitz@jll.com)

**DOUG OKUN**

305.960.8444

[doug.okun@jll.com](mailto:doug.okun@jll.com)

[CITIGROUPCENTER.COM](http://CITIGROUPCENTER.COM)



**MONARCH**  
ALTERNATIVE CAPITAL



**Tourmaline**



©2025. Jones Lang LaSalle Brokerage, Inc. All rights reserved. All information contained herein is from sources deemed reliable; however, no representation or warranty is made to the accuracy thereof.