

BAYSIDE REALTY PARTNERS PRESENTS

Pleasant Hill Medical Plaza

400 Taylor Boulevard — Pleasant Hill, California 94523

East Bay's Premiere Medical Office Building in Pleasant Hill



TRASK LEONARD
President and CEO
650.533.2591
tleonard@baysiderp.com
DRE#01152101



CAROLINE DOYLE
Senior Vice President
650.722.1495
cdoyle@baysiderp.com
DRE#01906397



Pleasant Hill Medical Plaza

Pleasant Hill, California 94523



LOCATION

- **Strategic location** for convenient access to Pleasant Hill, Walnut Creek, Concord and Clayton population
- **Easy freeway access** to I-680/780 and SR 242/4
- 3 story medical office building **favorable to practitioners**, multi-location practices and independent physicians
- **Proximity to two major hospital** campuses — John Muir Walnut Creek and Concord campuses



BUILDING

- **Highest quality** and dominant medical office building in Pleasant Hill
- Surface parking with **free parking** offering direct access to front/rear building entrances
- **245 parking spaces** (4+ / 1,000 SF) parking ratio
- **New Ownership: Lincoln Property Company**, an experienced medical office owner and operator



TENANCY

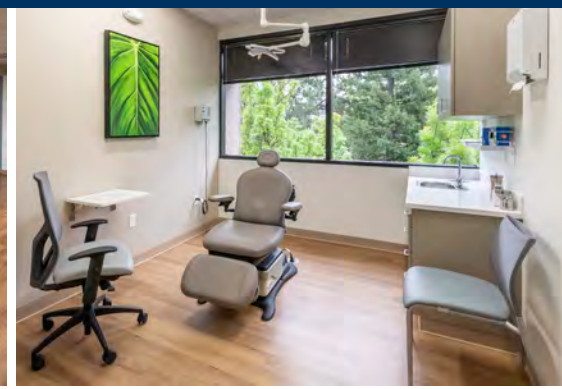
- **Health system tenants:**
 - John Muir Health
 - Packard Children's Health Alliance
- **Competitive** tenant improvement allowance
- **Existing uses include** ENT, GI, Dermatology, Oncology & Hematology, Pediatric Neurology



SPACES

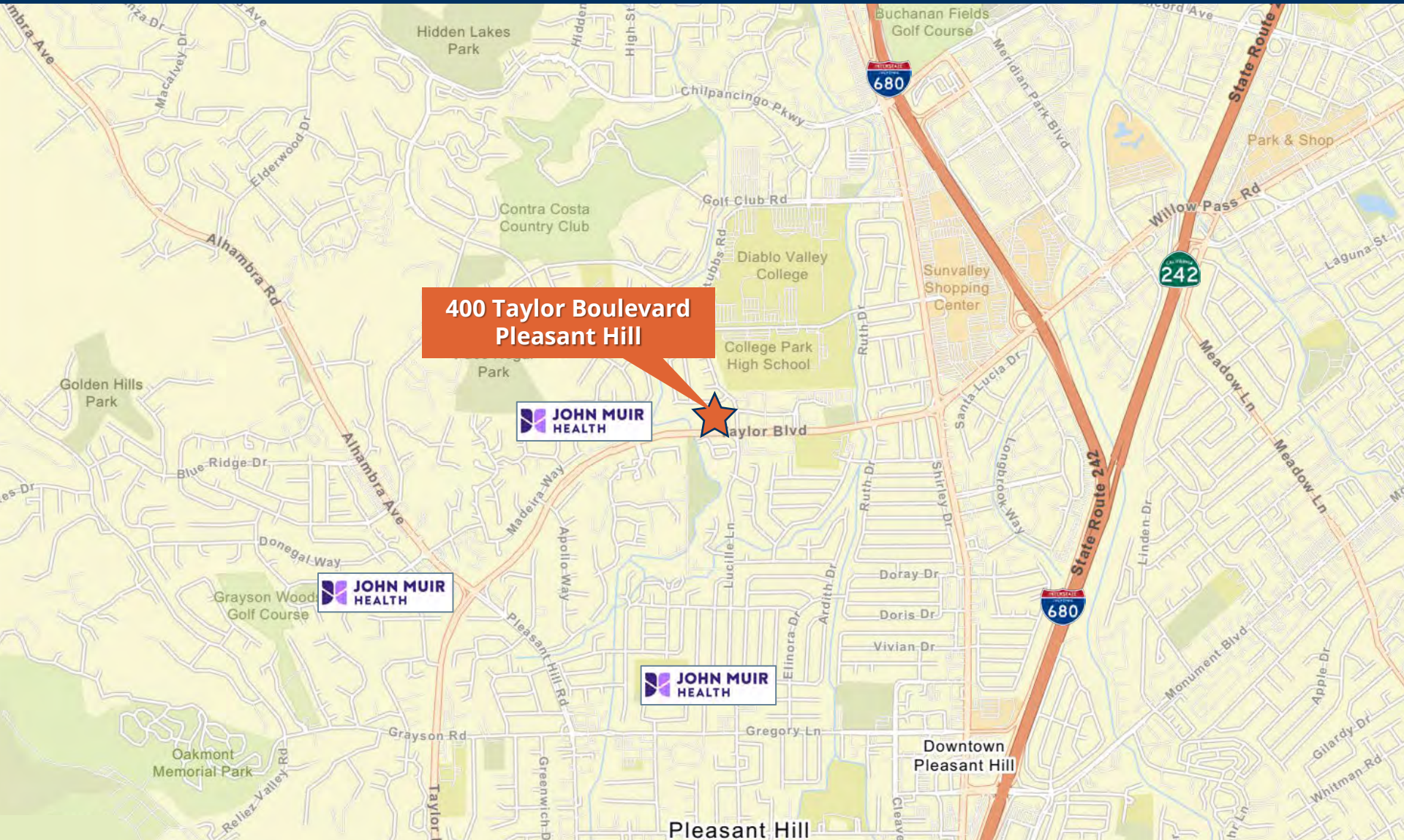
- **Largest available ground floor** (7–10K SF) medical space in Pleasant Hill and Walnut Creek
- **Opportunity** for Urgent Care Surgery Center, ASC
- +/- 20 K SF of **medical clinic/office** available with suites ranging from 950 SF to 13,500 SF

BAYSIDE REALTY PARTNERS PRESENTS
Pleasant Hill Medical Plaza
Pleasant Hill, California 94523



Pleasant Hill Medical Plaza

Pleasant Hill, California 94523

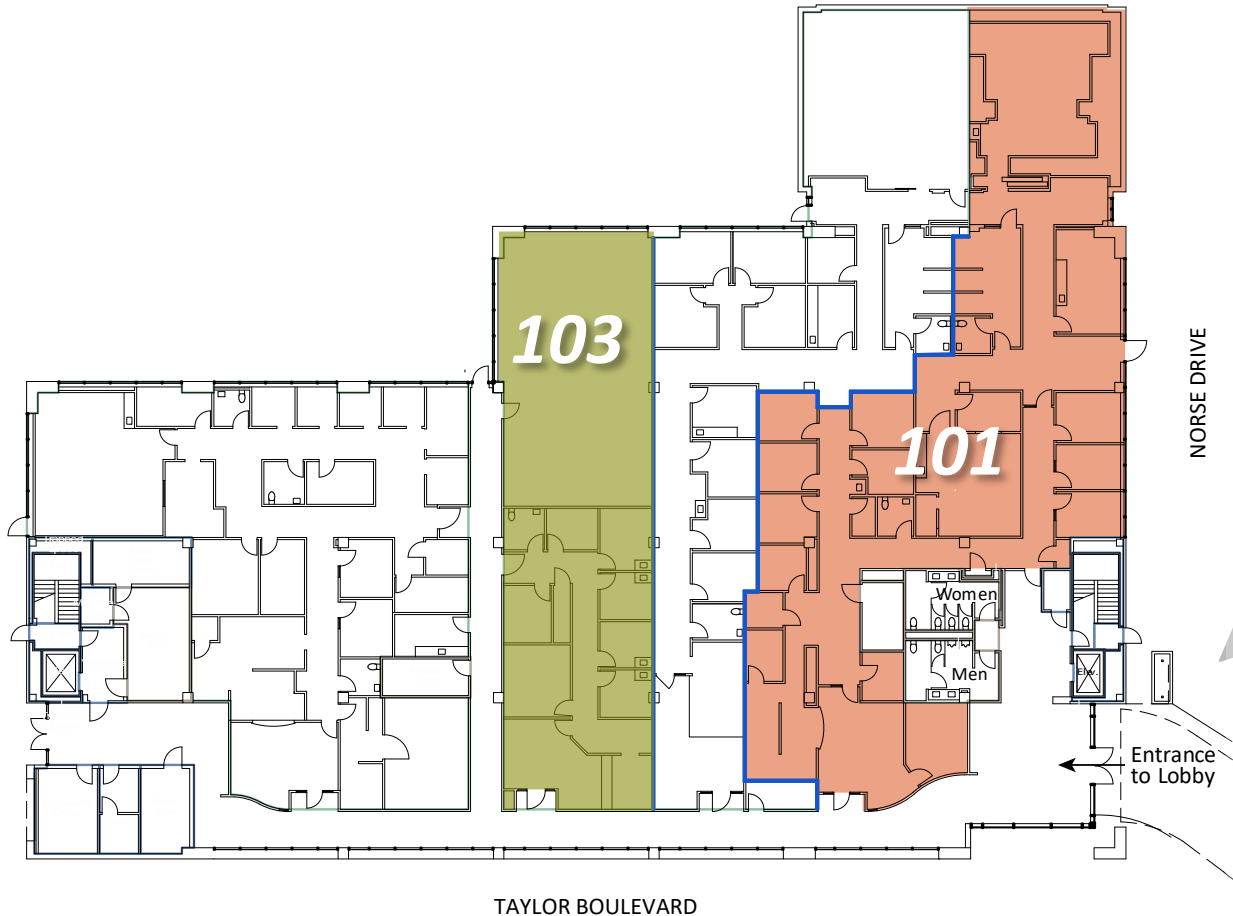


400 Taylor Boulevard
Pleasant Hill



Pleasant Hill Medical Plaza

Pleasant Hill, California 94523



Suite 101 7,576 RSF

Waiting room/reception, 10-12 exam rooms/offices, procedure rooms and imaging room/vault

Suite 103 2,225-4,344 RSF

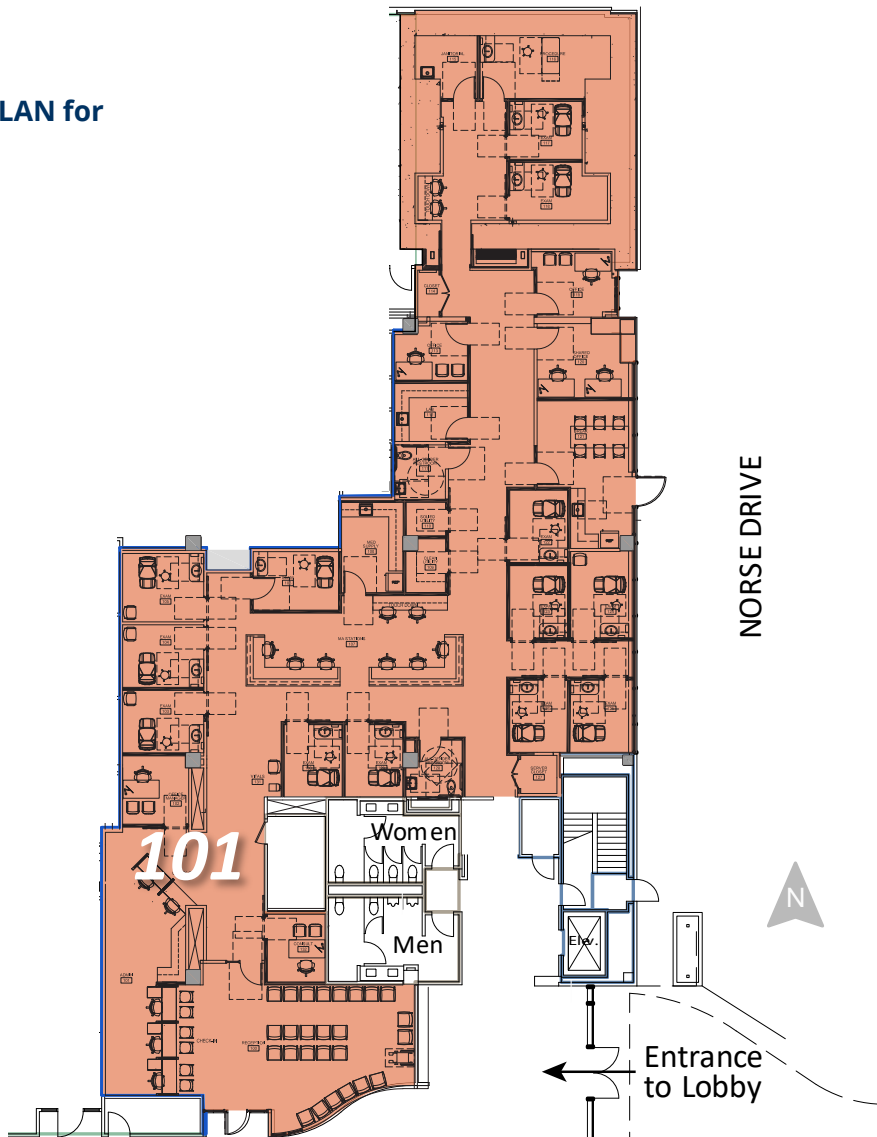
Waiting room/reception, 4 exam rooms, 1 office and 1 conference/consult room. Approx. 2,225 SF of clinic space with approx. 2,219 SF of cold shell space to make for a contiguous 4,344 SF.

(Direct lease opportunity available, subject to termination of existing lease with LED Sep 2027)

Pleasant Hill Medical Plaza

Pleasant Hill, California 94523

**FIRST FLOOR—
CONCEPTUAL PLAN for
SUITE 101**

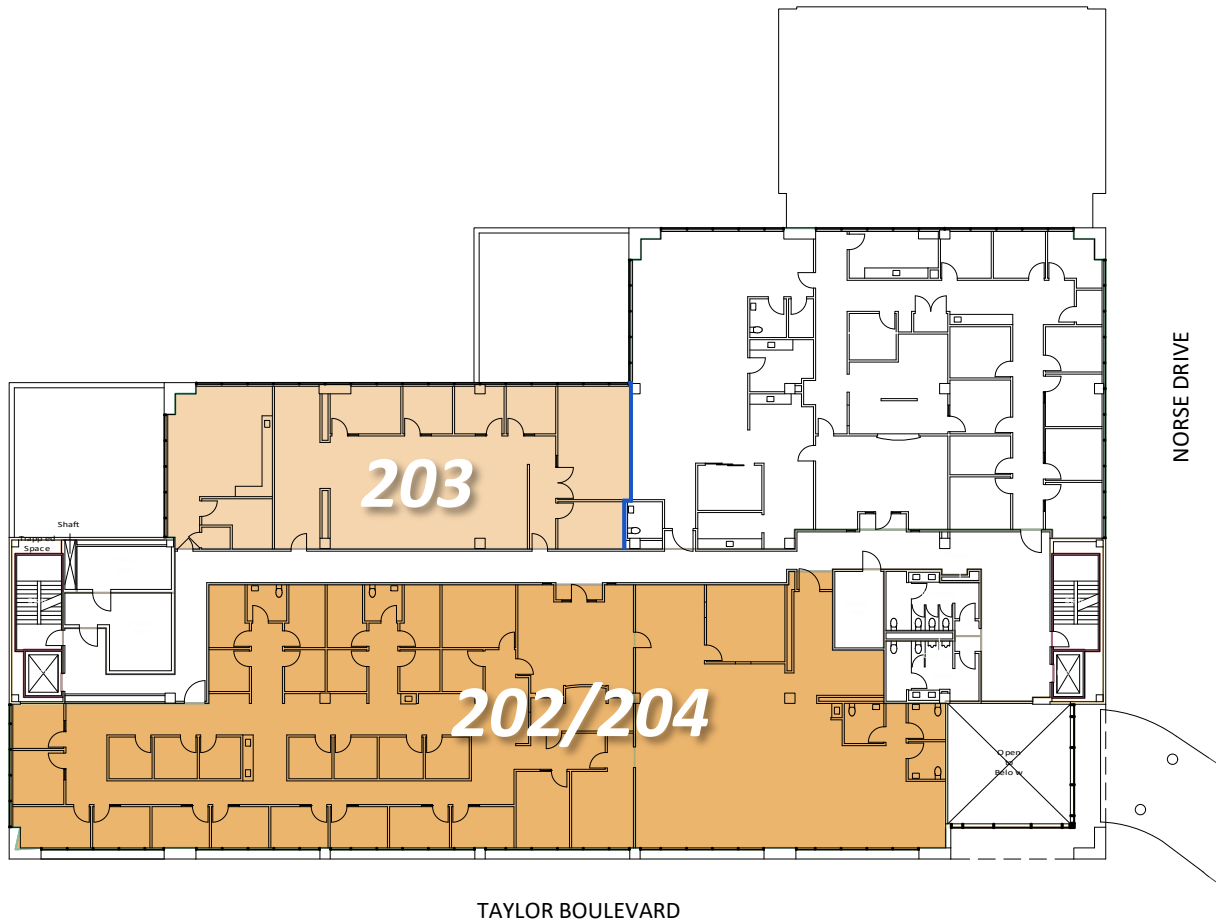


Suite 101 7,576 RSF

Waiting room/reception, 10-12 exam rooms/offices, procedure rooms and imaging room/vault

Pleasant Hill Medical Plaza

Pleasant Hill, California 94523

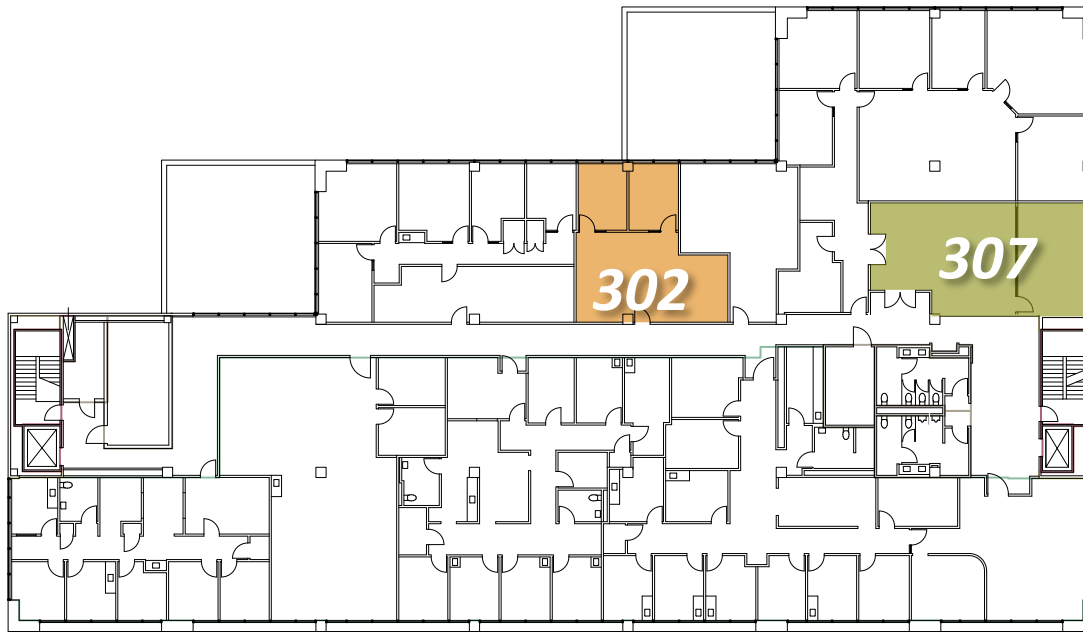


Suite 202/204 2,709–9,907 RSF
Waiting room/reception; 26–30 treatment rooms, 16 offices, 1 break room, 1 conference room, open layout treatment area with central admin/monitoring station, 5 restrooms.
(Direct lease opportunity available, subject to termination of existing lease with LED Dec 2031)

Suite 203 3,545 RSF
6 offices, one conference room, one large staff/break area.
(Direct lease opportunity available, subject to termination of existing lease with LED Dec 2031)

Pleasant Hill Medical Plaza

Pleasant Hill, California 94523



TAYLOR BOULEVARD

NORSE DRIVE

Suite 302 952 RSF

Waiting room/reception open area
with 2 exam rooms/offices

Suite 307 1,188 RSF

Existing conference room layout can
convert to waiting room/reception
and 2-3 exam rooms

Pleasant Hill Medical Plaza

Pleasant Hill, California 94523

THIRD FLOOR— CONCEPTUAL PLAN for SUITE 307



Suite 307 1,188 RSF
Waiting room/reception and 2-3
exam rooms, office, break room

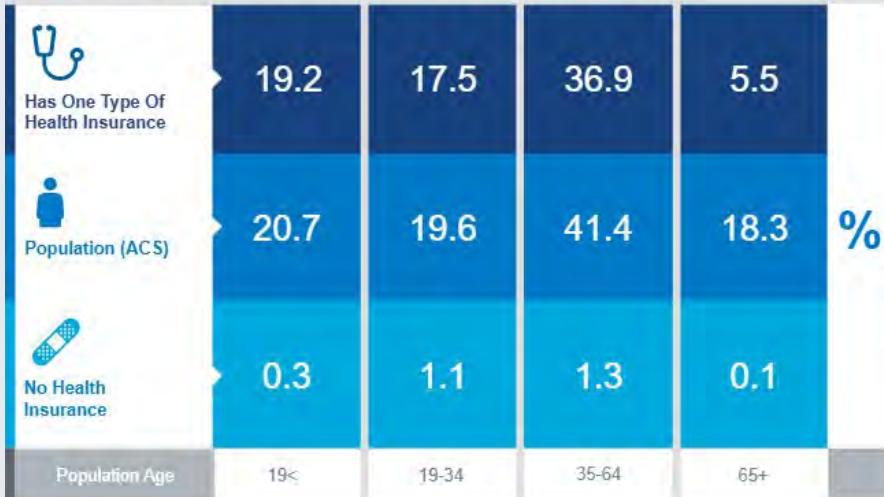
Pleasant Hill Medical Plaza

Pleasant Hill, California 94523

Health Care & Insurance

400 Taylor Blvd, Pleasant Hill, California, 94523
Ring band of 3 - 5 miles

This infographic provides a set of key demographic and health care indicators. [Learn more about this data](#)



Population

122,172
Civilian Noninstitutionalized Population (ACS)

esri THE SCIENCE OF WHERE
© 2025 Esri

SOURCE: This infographic contains data provided by ACS (2019-2023), Esri-U.S. BLS (2025), Esri-MRI-Simmons (2025).

Exercise (Percent of Adults)

50.8%
Exercise at home 2+ times per week

17.1%
Exercise at club 2+ times per week

Health Care Expenditure

\$6,915
Annual Health Insurance Expenditures

\$3,830
Medical Care

Medicare: Population 65+

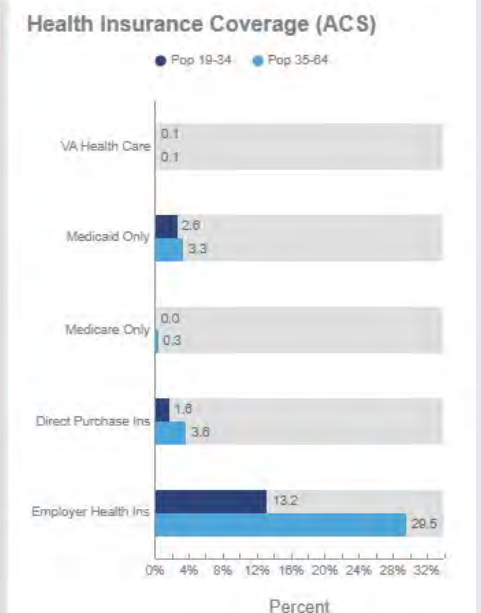
5,801
Medicare Only

4,221
Direct-Purch & Medicare

5,870
Employer & Medicare

1,583
Medicare & Medicaid

Health Care (Consumer Spending)	Annual Expenditure
Blue Cross/Blue Shield	\$1,790.7
Medicare Payments	\$1,463.0
Physician Services	\$397.8
Dental Services	\$900.1
Eyecare Services	\$136.2
Lab Tests/X-rays	\$119.7
Hospital Room & Hospital Service	\$353.9
Convalescent/Nursing Home Care	\$71.2



Meet Your Expert Team



TRASK LEONARD

President and CEO

650.533.2591

tleonard@baysiderp.com

DRE#01152101



CAROLINE DOYLE

Senior Vice President

650.722.1495

cdoyle@baysiderp.com

DRE#01906397

DOMINANT. EXPERT. INFLUENTIAL.

BAYSIDE REALTY PARTNERS

The preeminent provider of management, leasing, construction management and accounting services for healthcare properties.



MARKET LEADER

- Leasing & Property Management
- Investment Sales
- Tenant Representation
- Construction Management
- Property Repositioning



INFLUENTIAL NETWORK

- Institutional Investors
- Healthcare Systems and Healthcare Districts
- Physicians & Districts
- Private Investors



DOMINANT FOOTPRINT

- 2 million SF leased & managed
 - 50+ MOB portfolio
 - 10,000-240,000 SF
 - 500,000 SF portfolio
- San Francisco's largest MOBs
- 950+ leases executed
- 500+ medical and dental tenants

DOMINANT. EXPERT. INFLUENTIAL.