

MRG

For Lease

City Choice
Home Care Services
8-376-1700

OUR FUTURE
8-376-8484

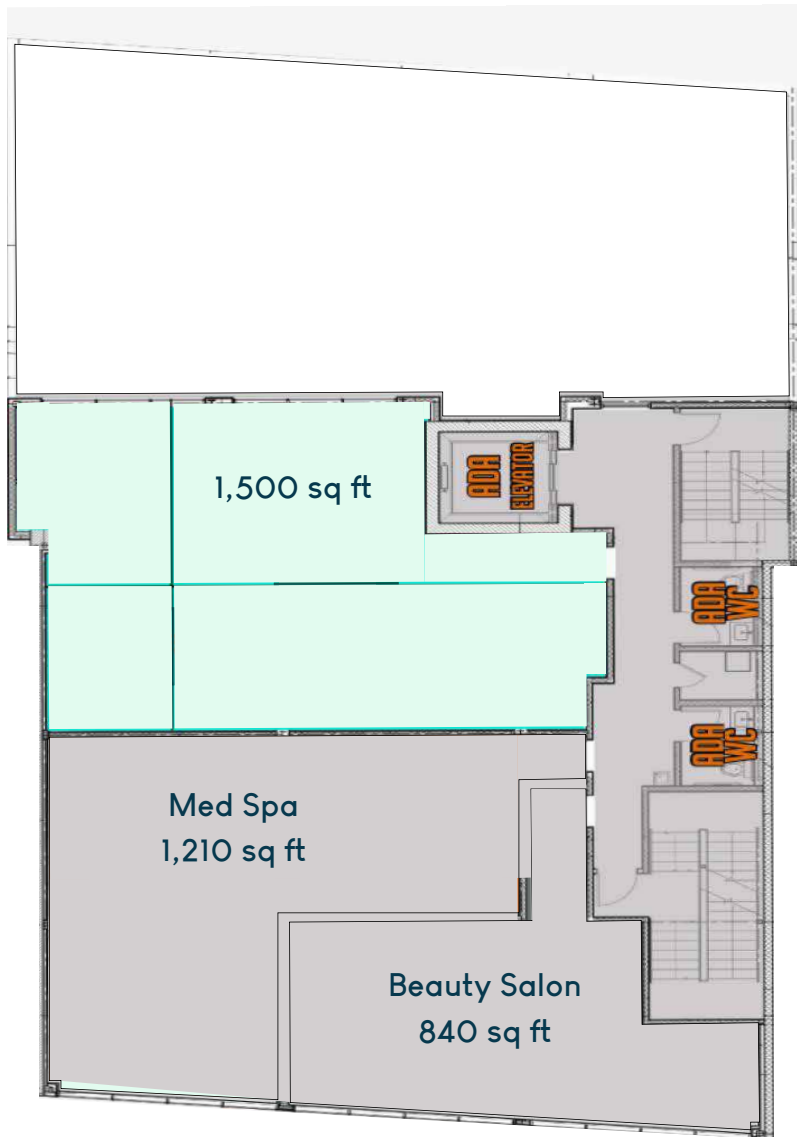
2727 Coney Island Ave

Office Space For Lease

1,500 sq ft | 2727 Coney Island Ave | Brooklyn, NY 11235



FLOOR PLAN



OVERVIEW

- **Address:** 2727 Coney Island Ave, Brooklyn, NY 11235
- **Cross Streets:** Between Ave Y and Ave X
- **Neighborhood:** Gravesend

SPACE DETAILS

- **Size:** 1,500 sq ft
- **Ceiling Height:** 12 ft
- **Frontage:** 25 ft

HIGHLIGHTS

- 1500 sq ft Available
- Elevator Building
- New Construction
- Prime Location
- Newly Built Office
- Floor to Ceiling Windows
- High-Traffic Area
- Steps Away from Public Transportation

TRANSPORTATION

- 🚗 1 min walk to B68
- 🚇 10 min walk to train B, Q
- 📍 33 min drive to LGA, 25 min drive to JFK, 38 min drive to EWR

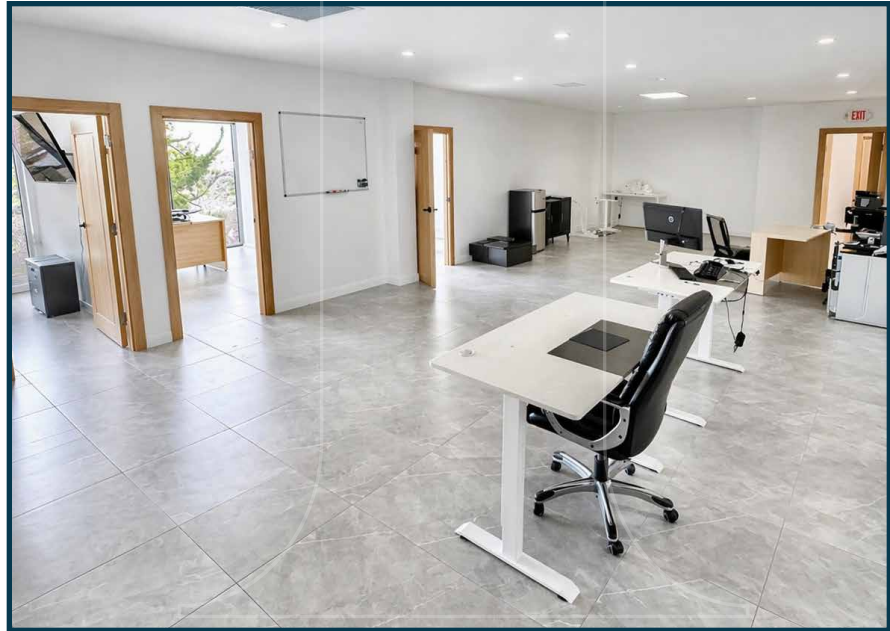
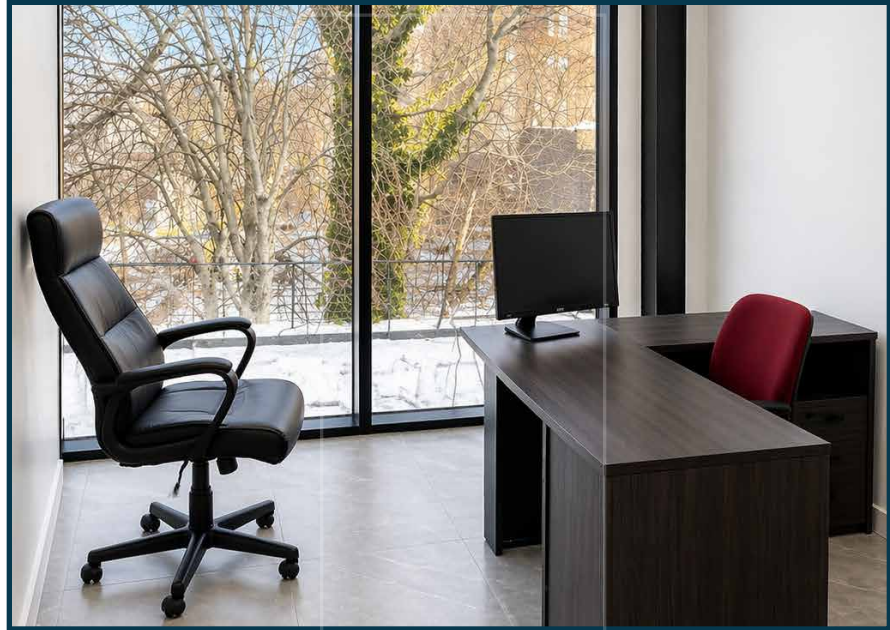
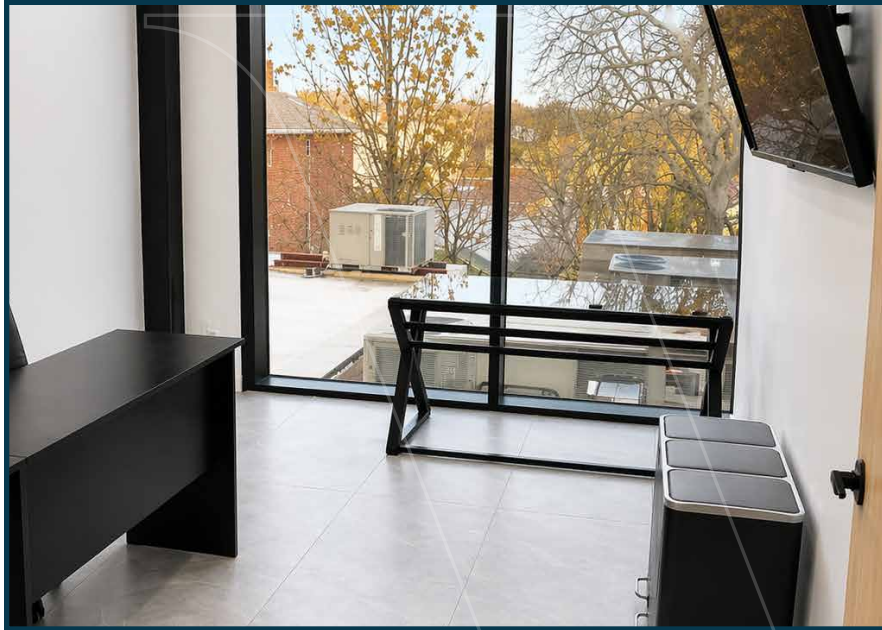
DEMOGRAPHICS

- **Population:** 129,689
- **Median Household Income:** \$60,829
- **Median Home Value:** \$780,048

NEIGHBORS

Russ Pizza, Ray's Hometown Bar, Five Leaves, Caffè Panna, Rule of Thirds, Atmosphere Brewery, Mr Taco, Nura, Cafe O'Te

INTERIOR PHOTOS



MRG

2727
Coney Island Ave
Brooklyn, NY 11235

FOR MORE INFORMATION
PLEASE CONTACT:

SOLOMON BETESH

212-314-4684 Ext. 111
Solb@mrgny.com

JONATHAN LIB

212-314-4684 Ext. 114
Jonathan@mrgny.com

EDDIE KEDA

212-314-4684 Ext. 104
Eddie@mrgny.com

